

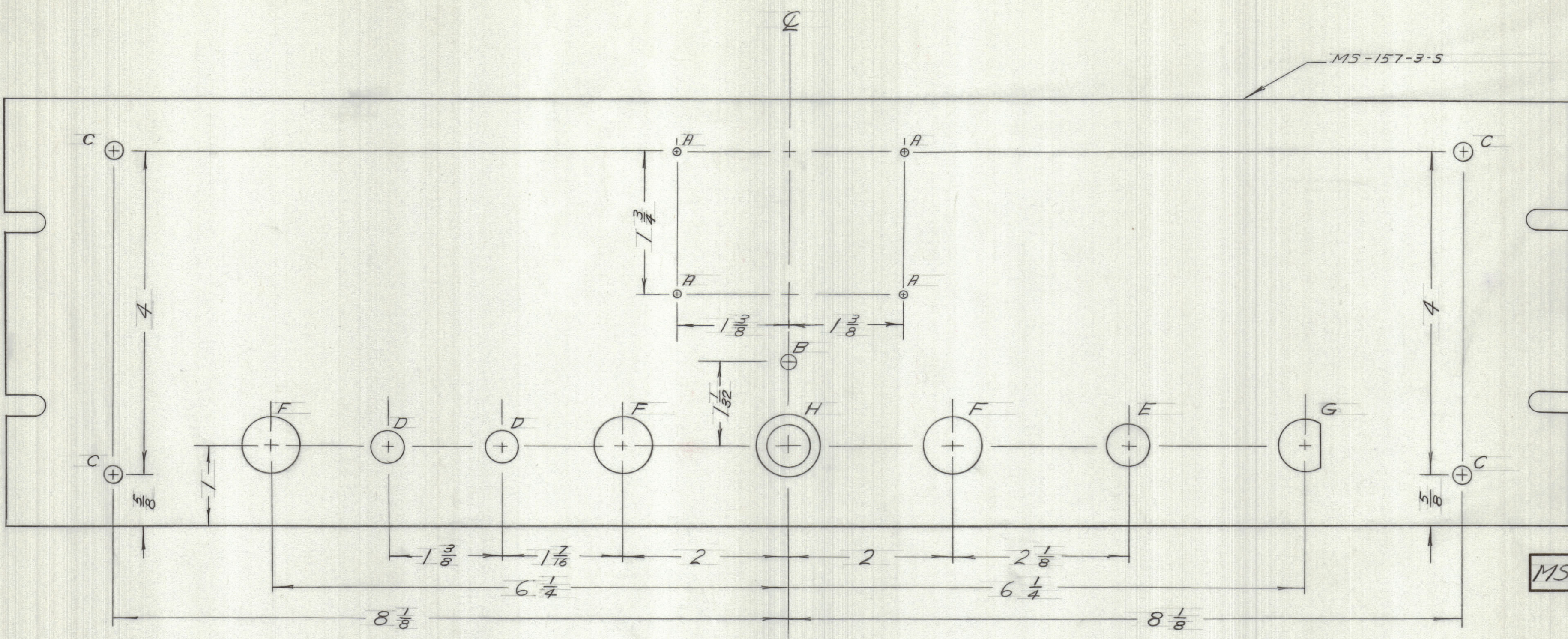
IF IT IS FOUND DESIRABLE TO CHANGE ANY TOLERANCE OR OTHER DETAIL SPECIFIED ON THIS DRAWING NOTIFY THE PURCHASER PROMPTLY.

DIMENSIONS IN INCHES UNLESS OTHERWISE SPECIFIED

MAXIMUM ALLOWABLE TOLERANCES HAVE BEEN DETERMINED AND DEVIATIONS WILL BE CAUSE FOR REJECTION. REMOVE ALL BURRS AND SHARP EDGES.

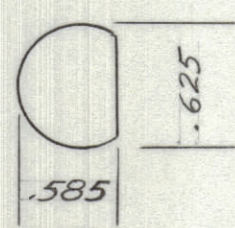
ISSUE	ITEM	CHANGED FROM	DATE	CN. NO.	DRAFTS	CHECKER	ENG. APP.

REQ.	ITEM	PART NO.	DESCRIPTION	SYMBOL

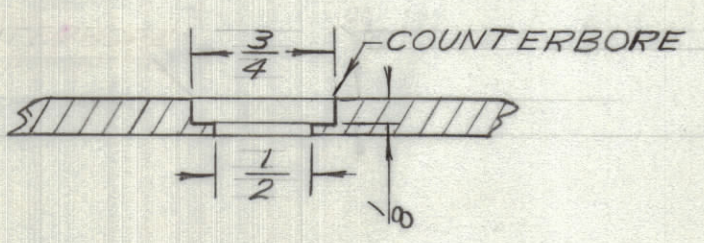


MS10557

HOLE "G"



HOLE "H"



HOLE	NO REQ.	SIZE
A	4	.078 DIA
B	1	.172 DIA
C	4	.203 DIA
D	2	.375 DIA
E	1	.500 DIA
F	3	.687 DIA
G	1	SEE DETAIL
H	1	SEE DETAIL

NOTES:

TO BE DEEP ENGRAVED BEFORE FINISHING

FINISH:

S-404: IRIDITE 14-2 AL-COAT
 S114: ZINC CHROMATE PRIMER } FRONT &
 S115: SMOOTH GREY ENAMEL } EDGES ONLY

REF: LD-10170

3/16 TH'K	TMC (Canada) LIMITED		
STOCK SIZE	OTTAWA	ONTARIO	
ALUM.	FRONT PANEL		
MATERIAL	WEIGHT PER PC.		
2024-T3			
TYPE & TEMPER	RD		
	DRAWN	ELEC. DES. APP.	MECH. DES. APP.
HEAT TREAT. SPEC.	CHECKED		FINAL APPROVAL
SEE NOTE			
FINISH & SPEC. NO.			MS10557

MID 3			8-1-64
MODEL	PROJECT NO.	ASS'Y. NO.	DATE

TOLERANCES		SCALE:
ALL OTHERS	DEC. DIM. ±	DRILL, PUNCH, COMMERCIAL STOCK
	FRAC. DIM. ±	SIZES AND MANUFACTURERS
	ANGULAR DIM. ±	TOLERANCES ARE NOT INCLUDED.