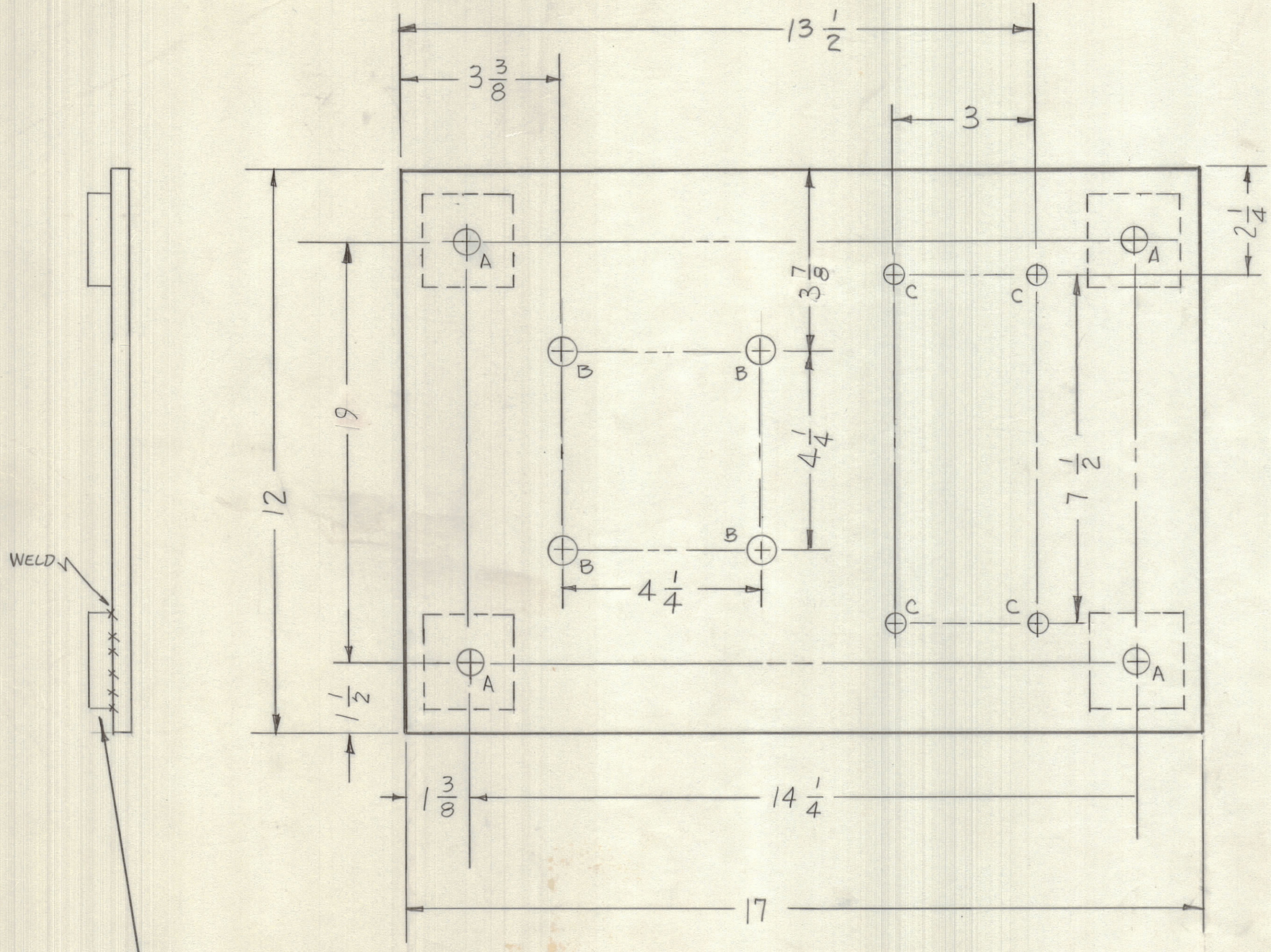
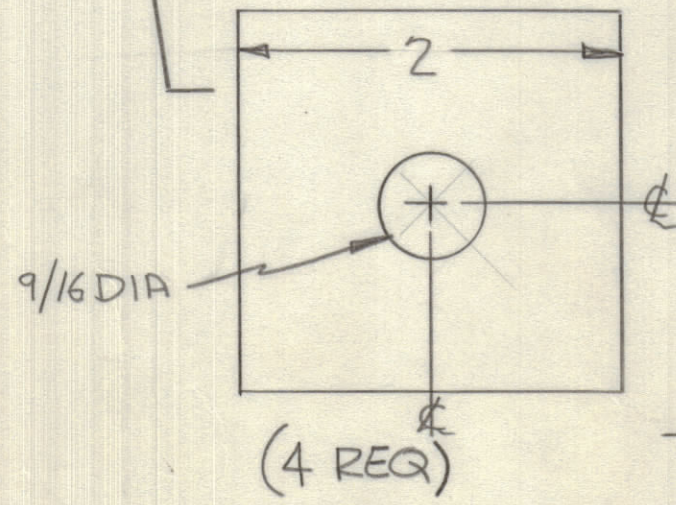


REVISIONS					
ZONE	LTR	DESCRIPTION	DATE	E.M.N.NO	APPD
B		REDRAWN, DRAWING LOST	11-16-79	2174	MAC



Hole	Description	Req
A	9/16 DIA	4
B	21/32 DIA	4
C	7/16 DIA	4



QTY / UNIT	MODEL USED ON	ASS'Y NO.
	VPA-11	
APPLICATION		
CODE		

NOTICE TO PERSONS RECEIVING THIS DRAWING
 THE TECHNICAL MATERIEL CORPORATION claims proprietary right in the material disclosed hereon. This drawing is issued in confidence for engineering information only and may not be reproduced or used to manufacture anything shown hereon without permission from THE TECHNICAL MATERIEL CORPORATION to the user. This drawing is loaned for mutual assistance and is subject to recall at any time.

UNLESS OTHERWISE SPECIFIED DIMENSIONS ARE IN INCHES AND INCLUDE CHEMICALLY APPLIED OR PLATED FINISHES

TOLERANCES ON

DECIMALS	FRACTIONS
.X ± .05	± 1/64
.XX ± .01	ANGLES
.XXX ± .005	± 0° -30'

MATERIAL
 3/8 COLD ROLL STEEL

FINISH
 S14 ZINC CROMIT
 S15 SM. GRAY

QTY. REQ.	ITEM	PART NO.	DESCRIPTION	SYMBOL
LIST OF MATERIAL				
FINAL APPROVAL: FB DATE: _____ MECH. DES. DATE: _____ ELECT. DES. DATE: _____ CHECKED DATE: _____ DRAWN: <i>[Signature]</i> DATE: _____				
THE TECHNICAL MATERIEL CORP. MAMARONECK, NEW YORK BASE MOUNTING				
SIZE	CODE IDENT. NO.	DWG NO.	ISSUE	
C	82679	MS10590	B	
SCALE			SHEET	OF

MS 10590 B B