

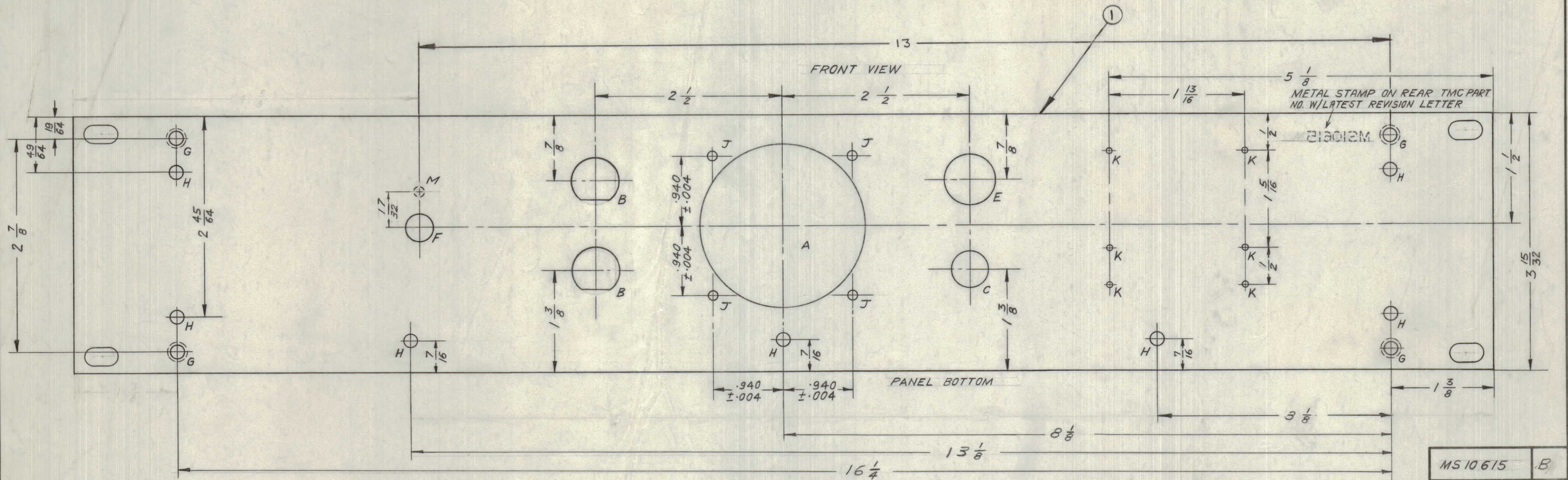
IF IT IS FOUND DESIRABLE TO CHANGE ANY TOLERANCE OR OTHER DETAIL SPECIFIED ON THIS DRAWING NOTIFY THE PURCHASER PROMPTLY.

DIMENSIONS IN INCHES UNLESS OTHERWISE SPECIFIED

MAXIMUM ALLOWABLE TOLERANCES HAVE BEEN DETERMINED AND DEVIATIONS WILL BE CAUSE FOR REJECTION. REMOVE ALL BURRS AND SHARP EDGES.

REQ.	ITEM	PART NO.	DESCRIPTION	SYMBOL
1	1	MS157-2H	PANEL, FRONT	

ISSUE	ITEM	CHANGED FROM	DATE	CN. NO.	DRAFTS	CHECKER	ENG. APP.
0		RELEASED FOR PROD.	17/1/66		RL		
A		"M" HOLE ADDED	17-3-66		RD		
B		M HOLE WAS 1/8	13-4-66		RD		



MS 10 615 B

HOLE	DESCRIPTION	REQ'D.
A HOLE	2.220 DIA	1
B HOLE	5/8 "D" HOLE	2
C HOLE	1/2 DIA	1
E HOLE	11/16 DIA	1
F HOLE	3/8 DIA	1
G HOLE	5/32 DIA COUNTERSINK IN REAR 82° .284	4
H HOLE	3/16 DIA	7
J HOLE	1/8 DIA	4
K HOLE	.076 DIA	6
M HOLE	9/64 DIA x 1/8 DEEP FROM REAR	1

MACHINING:

1. MILL ALL EDGES.
2. HOLES MUST BE DRILLED, UNLESS OTHERWISE SPECIFIED.
3. LATERAL BOW OF PANEL MUST BE KEPT TO .031 TOLERANCE.
4. PANEL MUST BE FREE OF ALL MACHINING MARKS, GOUGES AND SCRATCHES. IF NECESSARY, SAND FRONT OF PANEL WITH NO. 120 GRIT SANDPAPER.

REF: MS 157-2-H REF: LD 10189

GILBERT

STOCK SIZE		TMC (Canada) LIMITED OTTAWA ONTARIO	
ALUM.		FRONT PANEL	
MATERIAL		WEIGHT PER PC.	
TYPE & TEMPER		Drawn	MECH. DES. APP.
HEAT TREAT. SPEC.		Checked	FINAL APPROVAL
S404 YELLOW IRIDITE		MS 10 615 B	
FINISH & SPEC. NO.			

AMC 20	020/65	A 10 375	14-10-65
MODEL	PROJECT NO.	ASSY. NO.	DATE

USED ON

TOLERANCES

SCALE: 1:1

DEC. DIM. ±
FRAC. DIM. ± 1/64
ANGULAR DIM. ±

DRILL, PUNCH, COMMERCIAL STOCK
SIZES AND MANUFACTURERS
TOLERANCES ARE NOT INCLUDED.