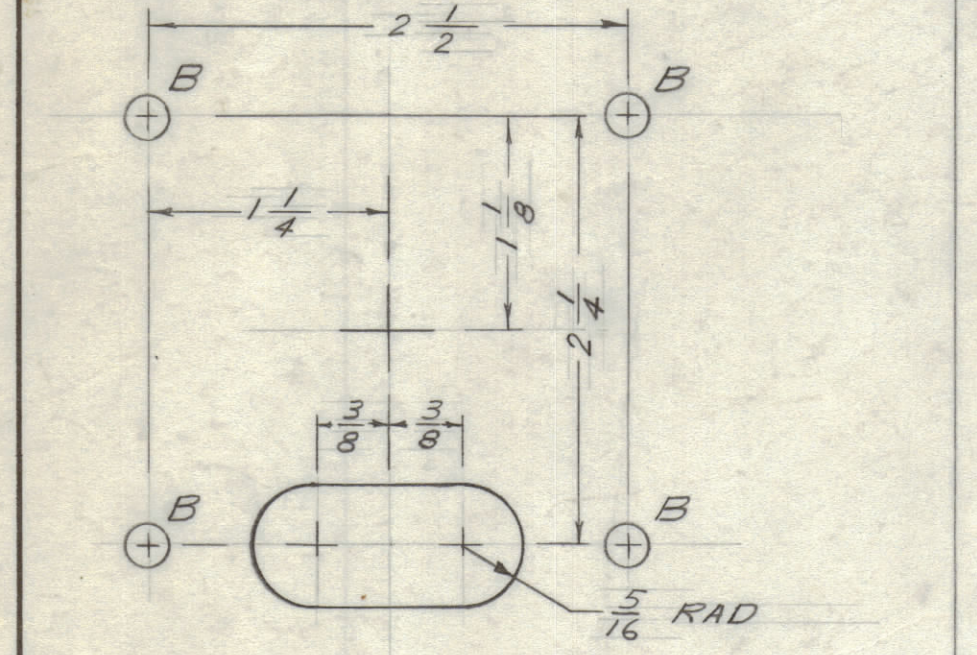


IF IT IS FOUND DESIRABLE TO CHANGE ANY TOLERANCE OR OTHER DETAIL SPECIFIED ON THIS DRAWING NOTIFY THE PURCHASER PROMPTLY.		DIMENSIONS IN INCHES UNLESS OTHERWISE SPECIFIED					
MAXIMUM ALLOWABLE TOLERANCES HAVE BEEN DETERMINED AND DEVIATIONS WILL BE CAUSE FOR REJECTION. REMOVE ALL BURRS AND SHARP EDGES.							
ISSUE	ITEM	CHANGED FROM	DATE	CN. NO.	DRAFTS	CHECKER	APP.
E		REL. FOR PROD.	26-1-66		GM		
F		SEE SHT. 2	28-1-66		RD		
G		X HOLE ADDED	21-2-66		RD		
C		SEE SHT 2	21-2-66		GM		
D		REVISED AS PER CEMH	24-1-66		RPL		

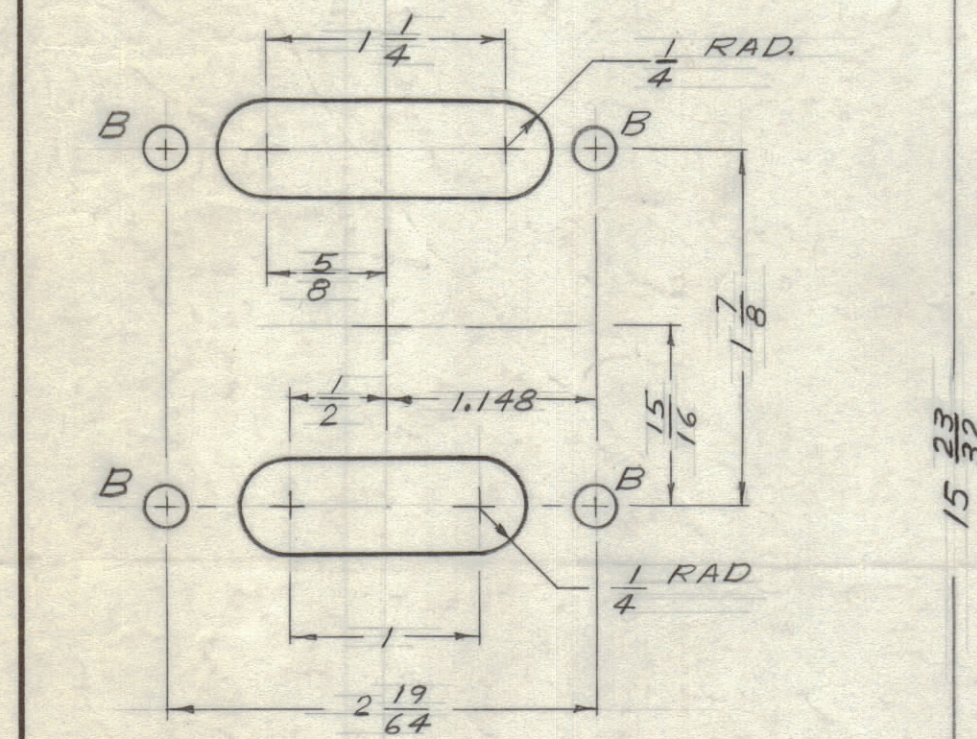
ISSUE	ITEM	CHANGE	DATE	CN. NO.	DRAFT	CHECK	APP.
E		REV. PER CEMH	16-7-64	1083	NAT.	AGC	180
G		REV. PER CEMH	12 FEB 73	1219	C.C.		SDW
H		REV. PER CEMH	10 JULY 73	1234	DM		

REQ.	ITEM	PART NO.	DESCRIPTION	SYMBOL
2	1	TE108-29	STANDOFF, RIVET TYPE	
2	2	TE108-19	STANDOFF, RIVET TYPE	
4	3	TE108-20	STANDOFF, RIVET TYPE	

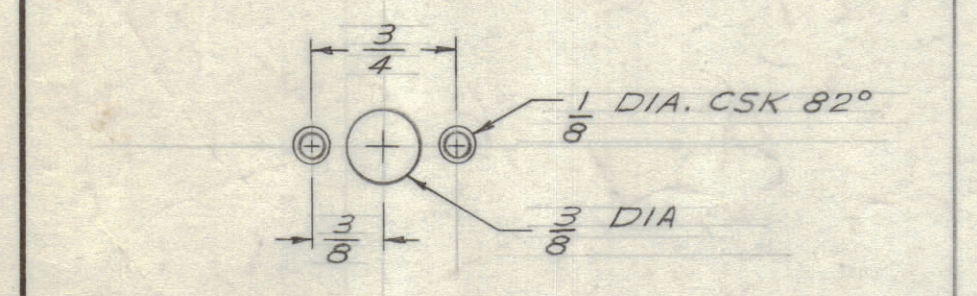
DETAIL "T" 2 REQ



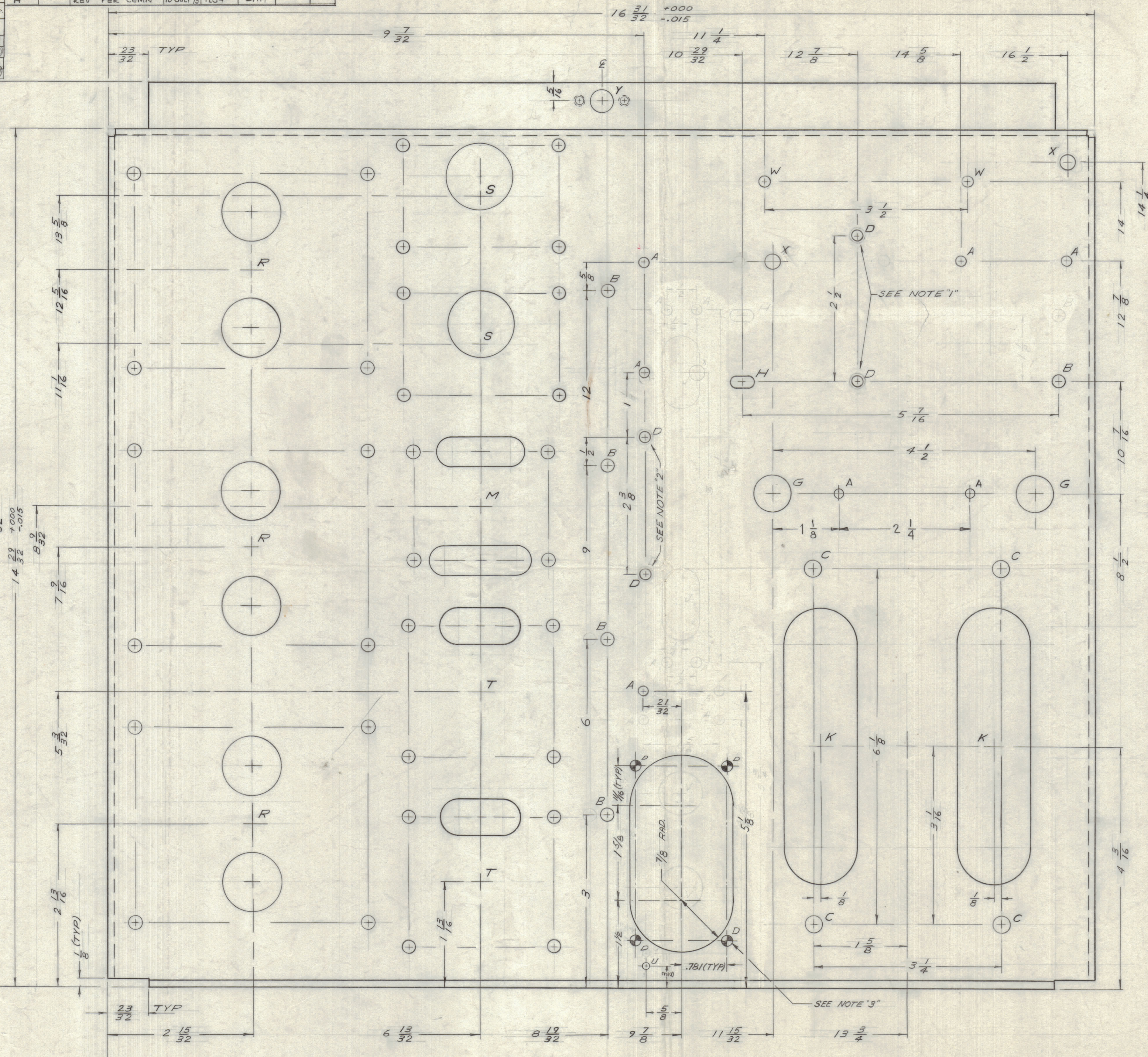
DETAIL "M" 1 REQ



DETAIL "Y" 1 REQ



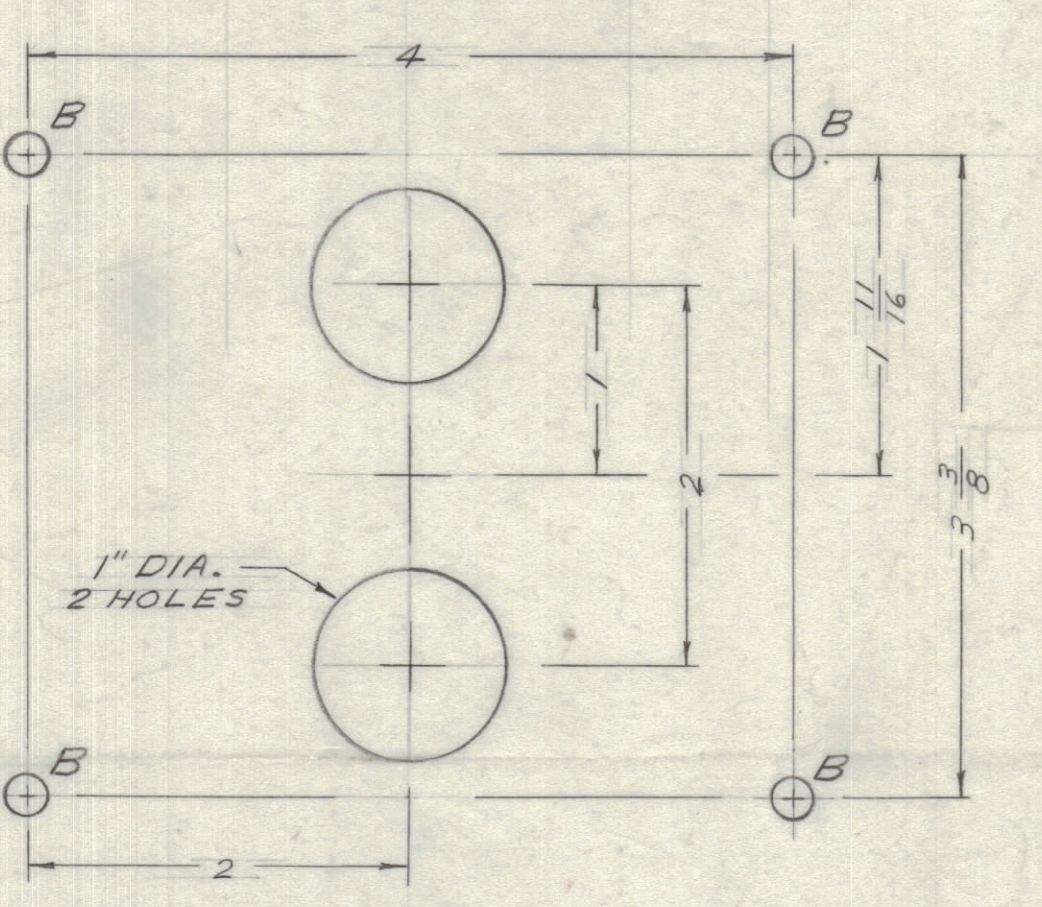
TOLERANCES		SCALE: 1:1
ALL DEC. DIM. ±	1/64	DRILL, PUNCH, COMMERCIAL STOCK SIZES AND MANUFACTURERS TOLERANCES ARE NOT INCLUDED.



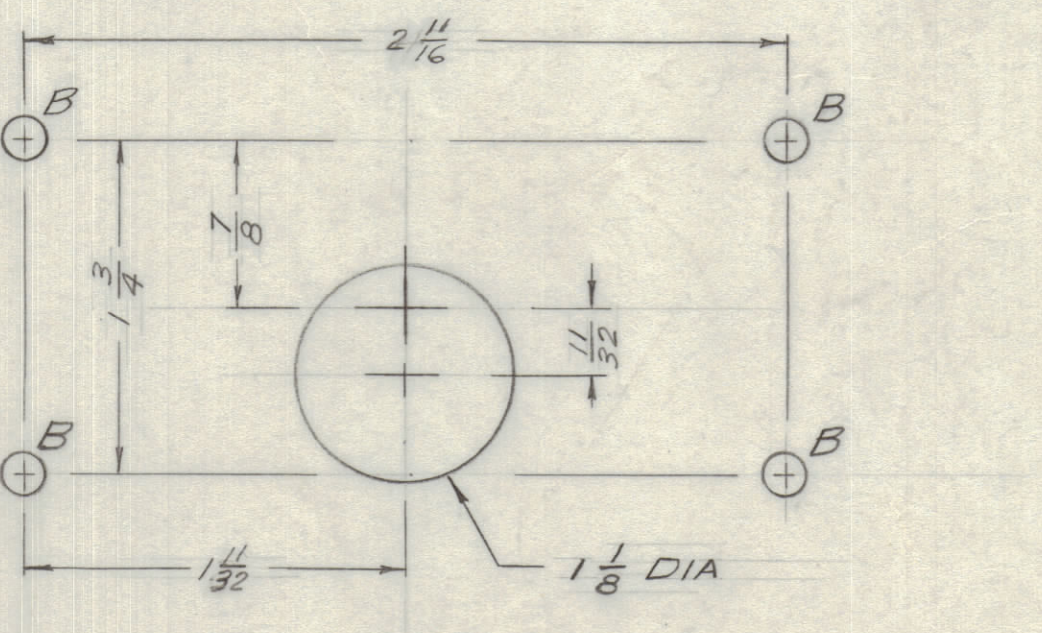
NOTES
 1- HOLES USED TO MOUNT ITEM "1"
 2- HOLES USED TO MOUNT ITEM "2"
 3- HOLES USED TO MOUNT ITEM "3"

HOLE	DESCRIPTION	REQ.
A	11/64 DIA.	16
B	7/32 DIA.	47
C	9/32 DIA.	4
D	.189 DIA.	8
E	15/32 DIA.	1
F	13/8 DIA.	1
G	5/8 DIA.	2
H	13/16 x 13/32 SLOT	12
K	1 1/4 x 3 1/2 SLOT	2
X	5/16 DIA.	2
U	1/8 DIA.	4
V	3/16 DIA.	2
X	17/64 DIA.	2

DETAIL "R" 3 REQ.



DETAIL "S" 2 REQ.



FOR OTHER VIEWS SEE SHT. 2

REF: LD 10200

.081 STOCK SIZE		TMC (Canada) LIMITED OTTAWA ONTARIO	
ALUM MATERIAL		CHASSIS, MAIN	
575-H34 TYPE & TEMPER		RD DRAWN	MECH DES. APP.
PSP 500 MODEL		028/66 PROJECT NO.	21 JAN 66 DATE
HEAT TREAT SPEC. S404 YELLOW IRIDITE FINISH & SPEC NO.		CHECKED: ELEC DES. APP. MECH DES. APP. EINAL APPROVAL	
		SHT. 1 of 2 M510662 H	

MS 10662