

IF IT IS FOUND DESIRABLE TO CHANGE ANY TOLERANCE OR OTHER DETAIL SPECIFIED ON THIS DRAWING NOTIFY THE PURCHASER PROMPTLY.

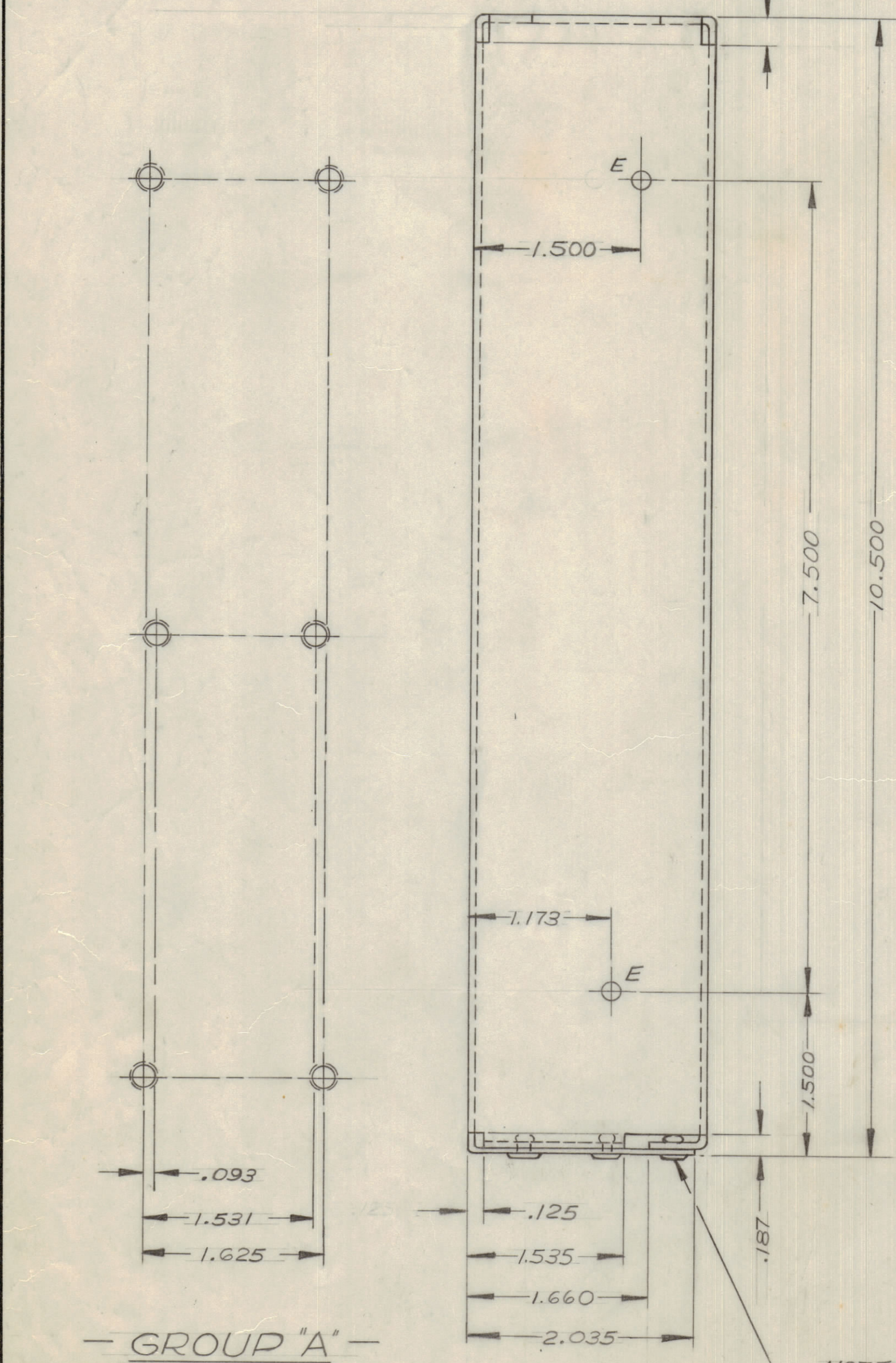
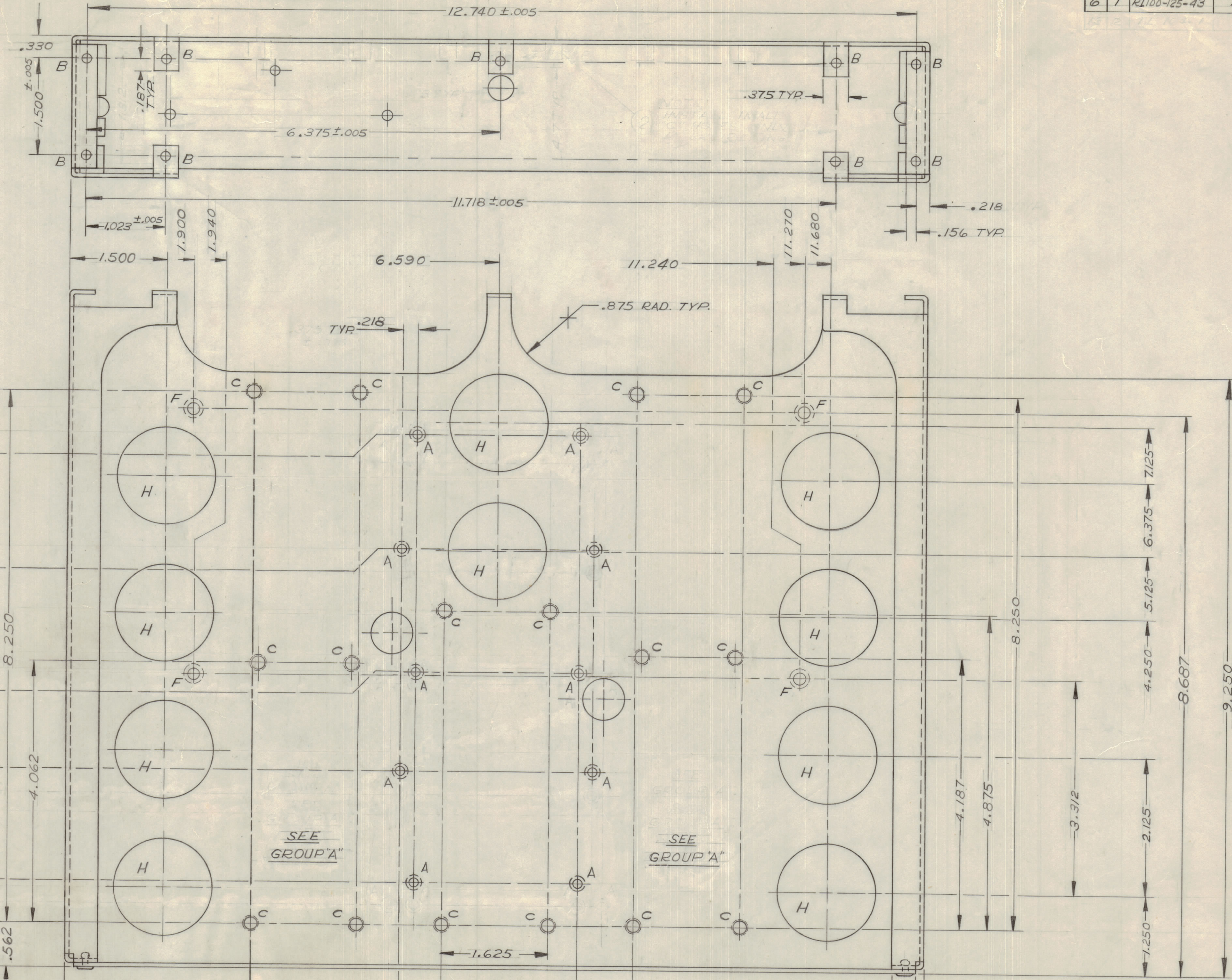
MAXIMUM ALLOWABLE TOLERANCES HAVE BEEN DETERMINED AND DEVIATIONS WILL BE CAUSE FOR REJECTION. REMOVE ALL BURRS AND SHARP EDGES.

ISSUE	ITEM	CHANGED FROM	DATE	CN. NO.	DRAFTS	CHECKER	ENG. APP.
Ø		REL TO PROD	MAY 6/63		AP		

MS 10953 Ø

REQ.	ITEM	PART NO.	DESCRIPTION	SYMBOL
6	1	RI100-125-43	RTVET, BLIND, EXPANSIVE	

AP



NOTE: INSTALL ONLY AFTER IRIDITING

HOLE	DESCRIPTION	REQ'D
A	.140 DIA. CSK .234 DIA. X 120°	10
B	.133 DIA.	15
C	.189 DIA. CSK .218 DIA. X 82°	16
D	.281 DIA.	2
E	.171 DIA.	4
F	.171 DIA. CSK .281 DIA. X 120°	4
G	.437 DIA.	1
H	1.375 DIA.	10
J	.158 DIA.	1

TOLERANCES UNLESS OTHERWISE SPECIFIED SCALE: 1:1

ALL DEC DIM ± .015	XX ± .06	DRILL, PUNCH, COMMERCIAL STOCK
FRACTIONAL DIM ± .015	XXX ± .01	SIZES AND MANUFACTURERS
ANGULAR DIM ± 0° 30'	XXX ± .005	TOLERANCES ARE NOT INCLUDED

AMC 32 074/69 FEB 24/69

REF. LD 10318

.064 THK. STOCK SIZE

ALUM. MATERIAL WEIGHT PER PC

TYPE & TEMPER

HEAT TREAT SPEC.

S404 - YEL. IRIDITE FINISH & SPEC. NO.

TMC (Canada) LIMITED OTTAWA ONTARIO

CHASSIS, CRADLE

AP DRAWN SIMPSON CHECKED

ELEC DES APP MECH DES APP

FINAL APPROVAL

MS 10953 Ø