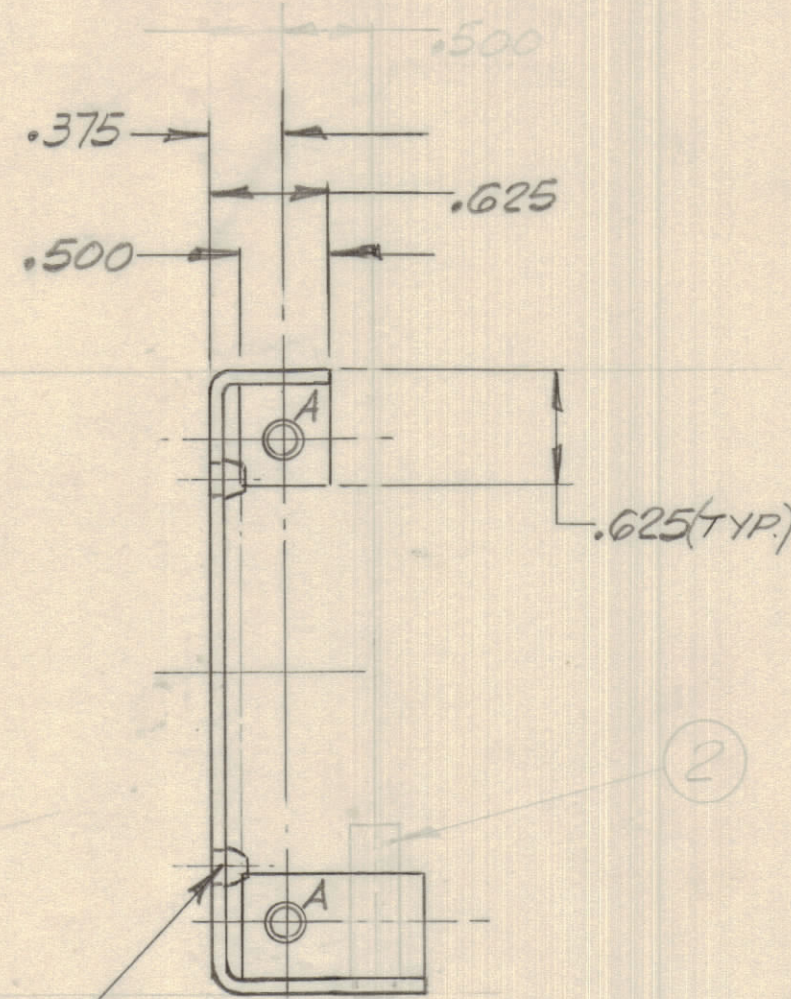
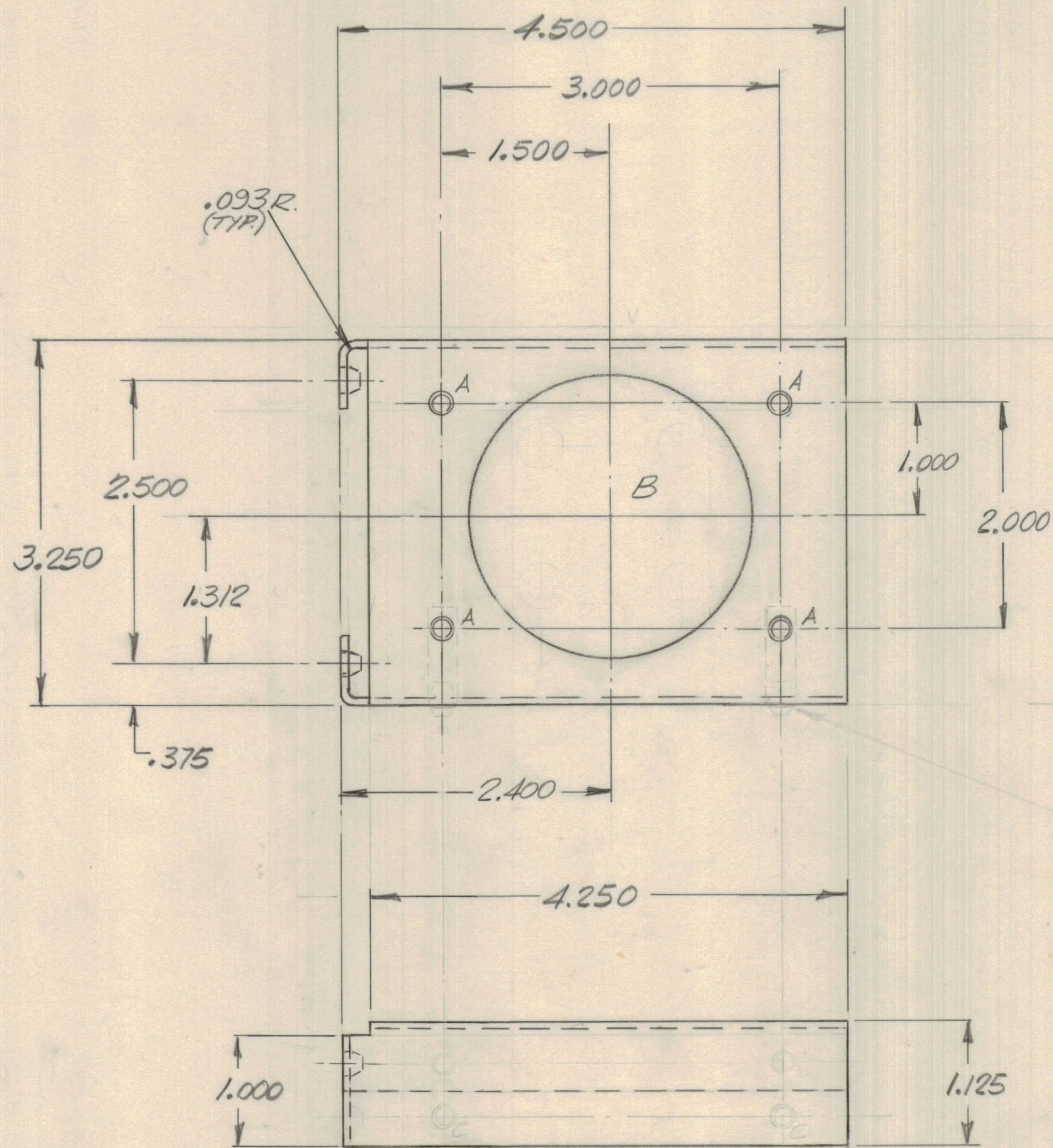


IF IT IS FOUND DESIRABLE TO CHANGE ANY TOLERANCE OR OTHER DETAIL SPECIFIED ON THIS DRAWING NOTIFY THE PURCHASER PROMPTLY.		DIMENSIONS IN INCHES UNLESS OTHERWISE SPECIFIED					
MAXIMUM ALLOWABLE TOLERANCES HAVE BEEN DETERMINED AND DEVIATIONS WILL BE CAUSE FOR REJECTION. REMOVE ALL BURRS AND SHARP EDGES.							
ISSUE	ITEM	CHANGED FROM	DATE	CN. NO.	DRAFTS	CHECKER	ENG. APP.
φ		REL TO PROD.	11 AUG 69		JM.		

REQ.	ITEM	PART NO.	DESCRIPTION	SYMBOL
6	1	NT1000Z-2	FASTENER. MINIATURE. LOCKING	A
2	2	TE164-13	NUT PLAIN. QUINCH.	C



MS11064 φ

HOLE	DESCRIPTION.	QTY
A	.213/.216 DIA	6
B	2.500 DIA	1
C	.189 DIA	2

NOTE: ITEMS ONE TO BE INSERTED AFTER IRIDITING.

TOLERANCES		SCALE: 1:1
ALL OTHERS	DEC. DIM. ± .015 FRAC. DIM. ± 1/64 ANGULAR DIM. ± 0° 30'	DRILL, PUNCH, COMMERCIAL STOCK SIZES AND MANUFACTURERS TOLERANCES ARE NOT INCLUDED.

LPA 1	088/69	11 AUG 69
MODEL	PROJECT NO.	DATE

.064	TMC (Canada) LIMITED	
STOCK SIZE	OTTAWA	ONTARIO
AL ALY	BRACKET. LEDEX. # P.C.B.	
MATERIAL	WEIGHT PER PC.	
575-H32		
TYPE & TEMPER	DRAWN: JWatt	MECH. DES. APP. SIMBO
HEAT TREAT. SPEC.	CHECKED	FINAL APPROVAL
IRIDITE S404		MS11064 φ
FINISH & SPEC. NO.		