

IF IT IS FOUND DESIRABLE TO CHANGE ANY TOLERANCE OR OTHER DETAIL SPECIFIED ON THIS DRAWING NOTIFY THE PURCHASER PROMPTLY.
 MAXIMUM ALLOWABLE TOLERANCES HAVE BEEN DETERMINED AND DEVIATIONS WILL BE CAUSE FOR REJECTION. REMOVE ALL BURRS AND SHARP EDGES

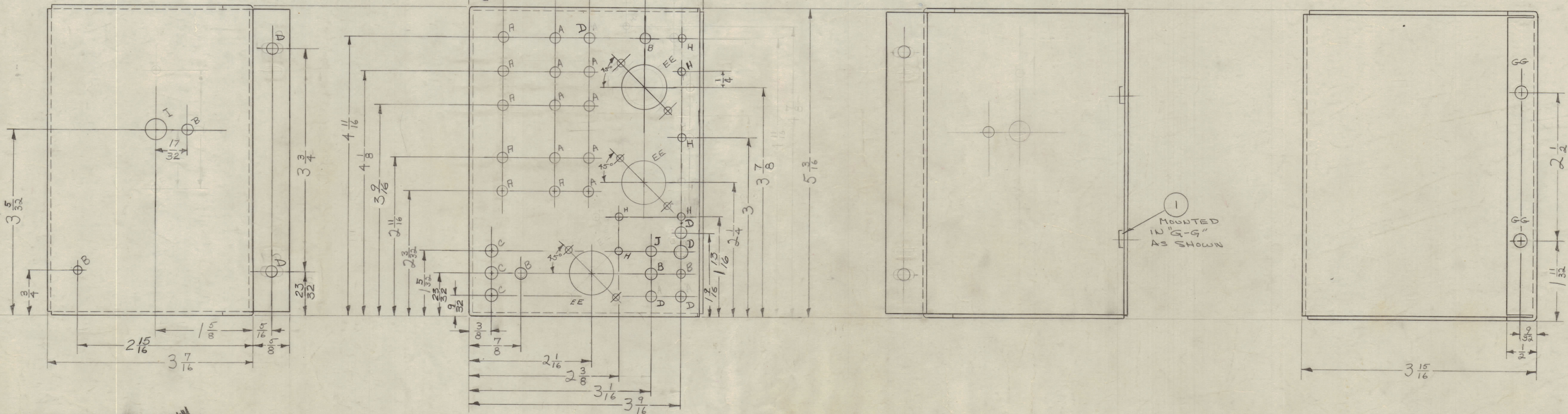
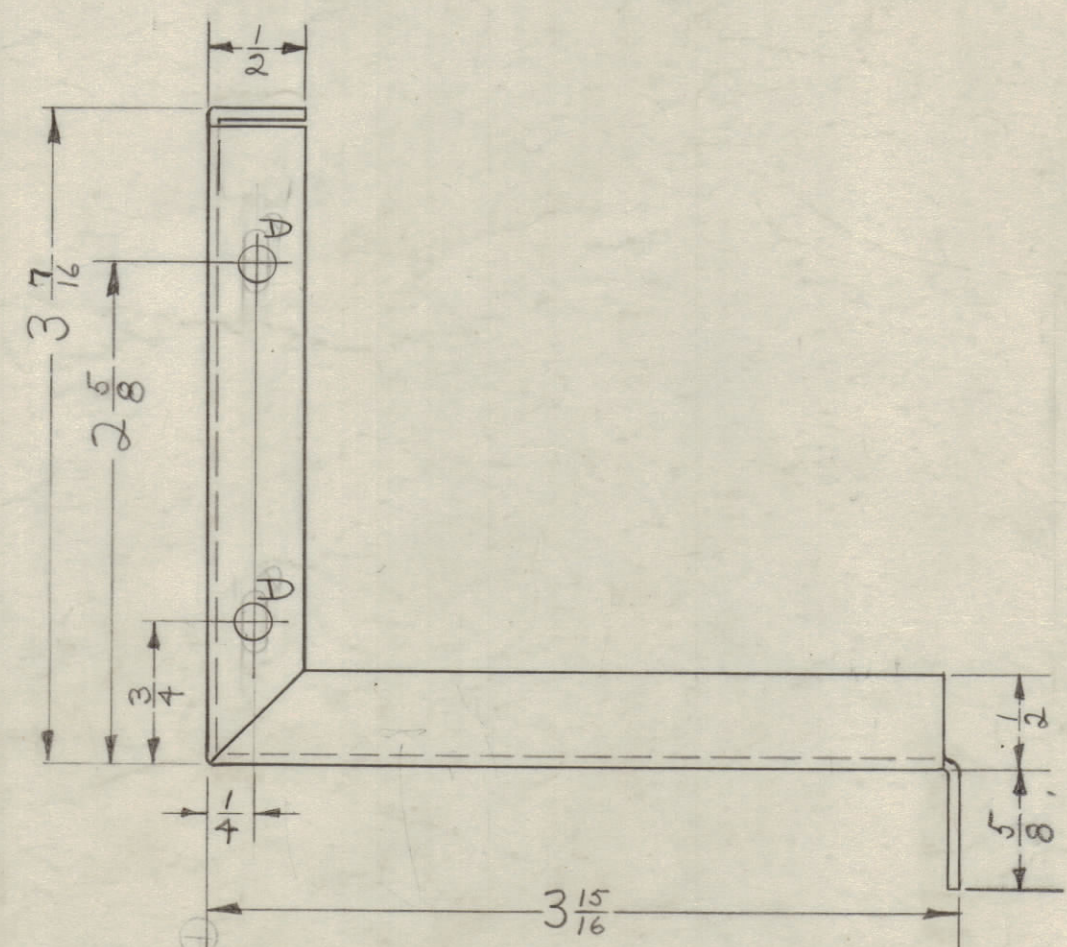
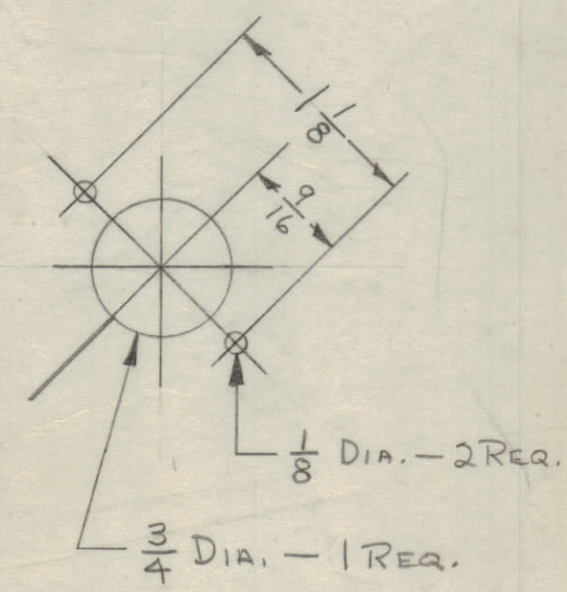
NOTICE TO PERSONS RECEIVING THIS DRAWING
 THE TECHNICAL MATERIEL CORPORATION claims property in this drawing and design. This drawing is issued in confidence and is to be used for information only and not to be reproduced or used to manufacture any part without the written permission of THE TECHNICAL MATERIEL CORPORATION. This drawing is loaned for mutual assistance and is subject to recall at any time.
 Property of:
 THE TECHNICAL MATERIEL CORPORATION
 MAMARONECK, NEW YORK

- A - $\frac{3}{16}$ DIA. - 14 REQ.
- B - $\frac{1}{8}$ DIA. - 6 REQ.
- C - $\frac{1}{4}$ DIA. - 3 REQ.
- D - $\frac{13}{64}$ DIA. - 9 REQ.
- EE - SEE DETAIL

GG - $\frac{191}{1000}$ D (FOR NT-129-632-4) 2 REQ.

- H - $\frac{1}{8}$ DIA. - 6 REQ.
- I - $\frac{3}{8}$ DIA. - 1 REQ.

EE-DETAIL - 3 REQ.



G	1	1/8" HOLE ADDED	3/16/58	AVC	
F	1	.166 D. WAS 5/32 D.	10/28/58	HRD	
E	1	3/8 DIM WAS 3/8, 1/4 WAS 3/8	1/30/58	AVC	
D	3	ONE "B" & "J" HOLE RELOCATED	9/28/58	AVC	
	2	ONE "H" HOLE DELETED			
	1	ONE "D" HOLE ADDED			
C	2	GG WAS 213X265 CISK	3/6/60	2934	RW
	1	J HOLE ADDED			
B	1	RELOCATED "H" HOLE	11/16/58	ABD	
	2	"H" HOLE ADDED			
A	1	"D" HOLES WERE 1/4 x 1/32	3/11/58	1	K

ISSUE ITEM CHANGED FROM DATE CN. NO. DRAFTS CHECKER ENG. APP.
 TOLERANCES SCALE: DO NOT SCALE.
 ALL DEC. DIM. ±
 OTHERS FRAC. DIM. ±
 ANGULAR DIM. ±
 DRILL, PUNCH, COMMERCIAL STOCK SIZES AND MANUFACTURERS TOLERANCES ARE NOT INCLUDED.

1	SBE-3	AO-102		12-2-59
1	SBE-2		A-1516	5-2-58
	SBE-1	380		7/17/57
REQ. PER UNIT	MODEL	PROJECT NO.	ASSY. NO.	DATE

REF: LD-366

2	1	NT-129-632-4 NUT, SWAGE, ROUND TYPE	
REQ. ITEM	PART NO.	DESCRIPTION	SYMBOL
	.064	THE TECHNICAL MATERIEL CORP. MAMARONECK, NEW YORK	
STOCK SIZE			
ALUMINUM	HT.	CHASSIS, XTAL OSC.	
MATERIAL	WEIGHT PER PC		
	5052-11-32		
TYPE & TEMPER			
	H		
HEAT TREAT SPEC.			
	E+L		
FINISH & SPEC. NO.			
		MS-1112 G	

MS-1112 G