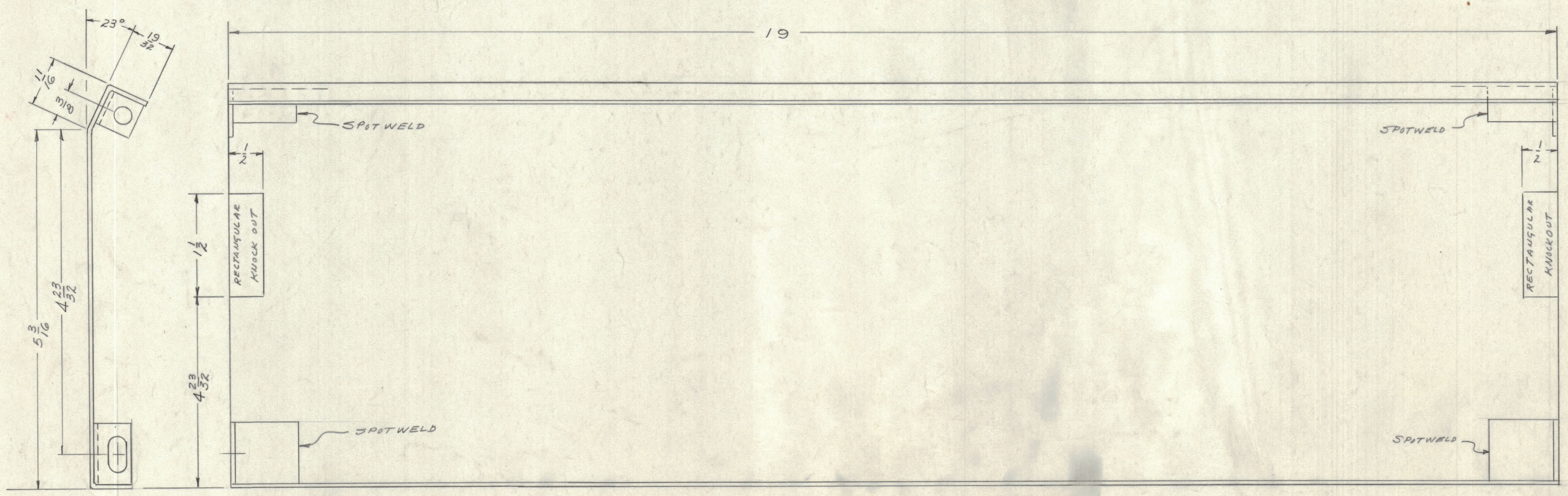
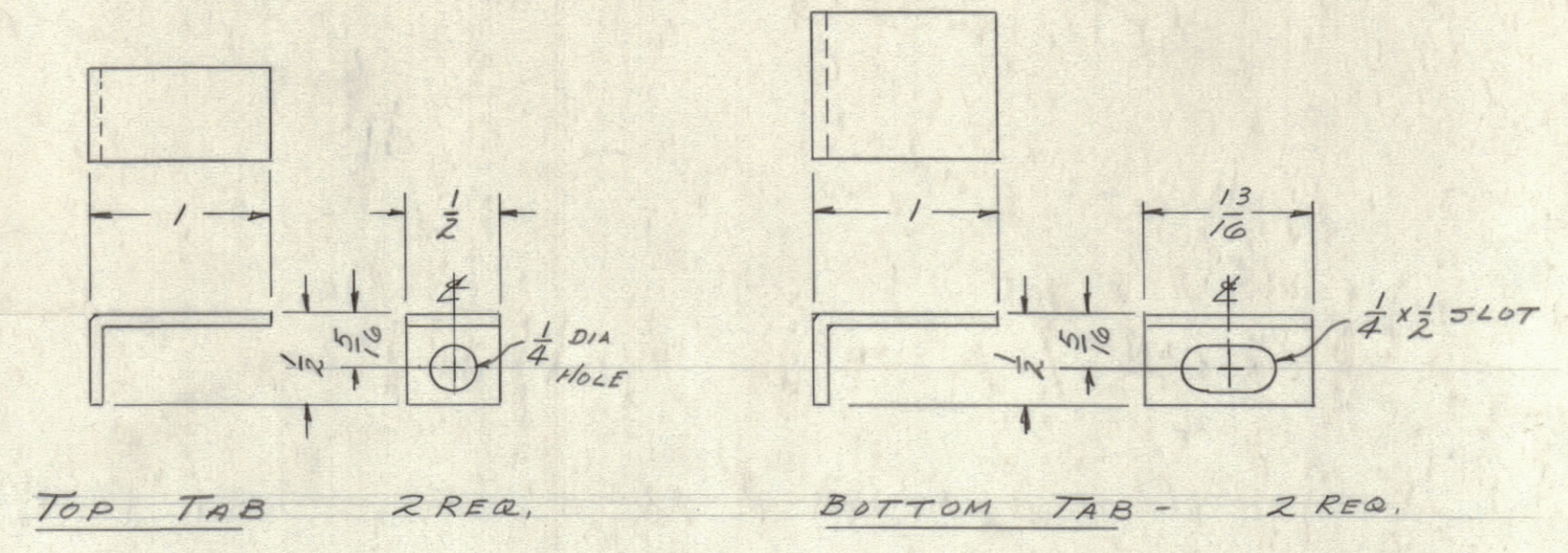


IF IT IS FOUND DESIRABLE TO CHANGE ANY TOLERANCE OR OTHER DETAIL SPECIFIED ON THIS DRAWING NOTIFY THE PURCHASER PROMPTLY.
 MAXIMUM ALLOWABLE TOLERANCES HAVE BEEN DETERMINED AND DEVIATIONS WILL BE CAUSE FOR REJECTION. REMOVE ALL BURRS AND SHARP EDGES



OBSOLETE
 REPLACED BY
 MS 1739 1/11/60

NOTICE TO PERSONS RECEIVING THIS DRAWING
 THE TECHNICAL MATERIEL CORPORATION claims property right in the material disclosed herein. This drawing is loaned in confidence, for engineering information only and may not be reproduced or used to manufacture anything shown herein without permission from THE TECHNICAL MATERIEL CORPORATION to the user. This drawing is loaned for mutual assistance and is subject to recall at any time.
 Property of:
 THE TECHNICAL MATERIEL CORPORATION
 MAMARONECK, NEW YORK

C	OBSOLETE	8/3/72	20863	GE	Q	CL	
B	S-404 YEL. IRIDITE WAS	1/4/59	1001	AB		EMN	
A	S-101 CAUSTIC DIP	2/1/62					
A	1 REDRAWN No. CHG.						
ISSUE	ITEM	CHANGED FROM	DATE	CN. NO.	DRAFTS	CHECKER	ENG. APP.
TOLERANCES		SCALE: 1:1					
ALL	DEC. DIM. ±	DRILL PUNCH COMMERCIAL STOCK					
OTHERS	FRAC. DIM. ±	SIZES AND MANUFACTURERS					
	ANGULAR DIM. ±	TOLERANCES ARE NOT INCLUDED.					

1	CONSOLE				
REQ PER UNIT	MODEL	PROJECT NO.	ASSY. NO.	DATE	USED ON

REQ. ITEM	PART NO.	DESCRIPTION	SYMBOL
16 GA.		THE TECHNICAL MATERIEL CORP.	
STEEL	CA	MAMARONECK, NEW YORK	
MATERIAL	WEIGHT PER FC.	CENTER, FRONT SUPPORT	
HILD			
TYPE & TEMPER			
CA			
HEAT TREAT. SPEC.			
S-404 YEL. IRIDITE			
S-101 ZINC CHROM. PRIM.			
S-115 TAC. SNEATH GRAY EN.			
FINISH & SPEC. NO.			
CHECKED		FINAL APPROVAL	
		MS-1147 C	

MS-1147 C