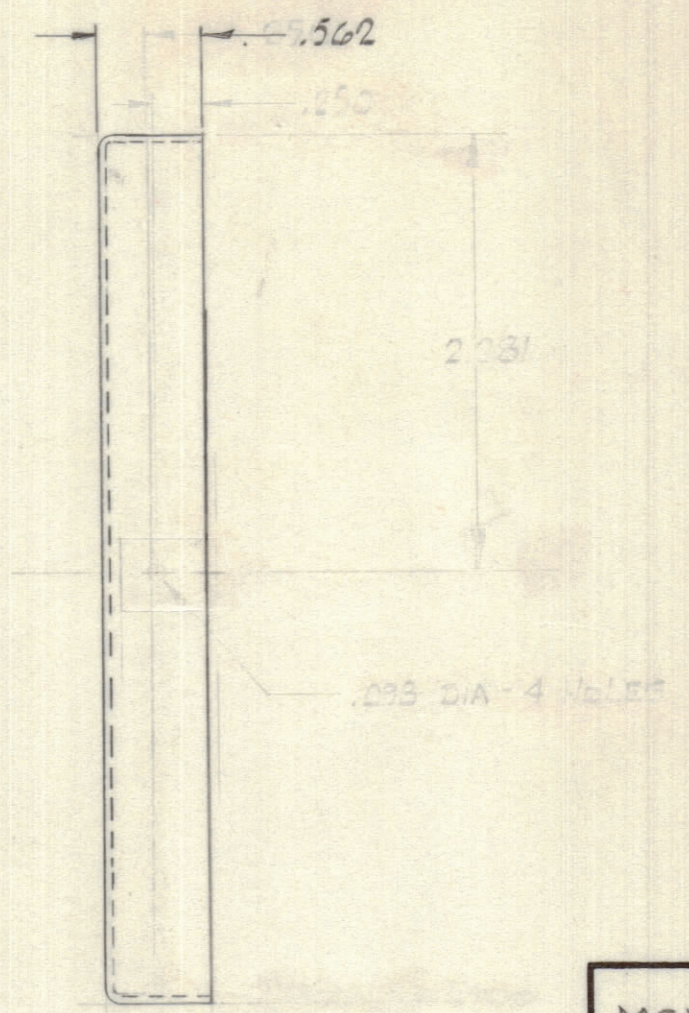
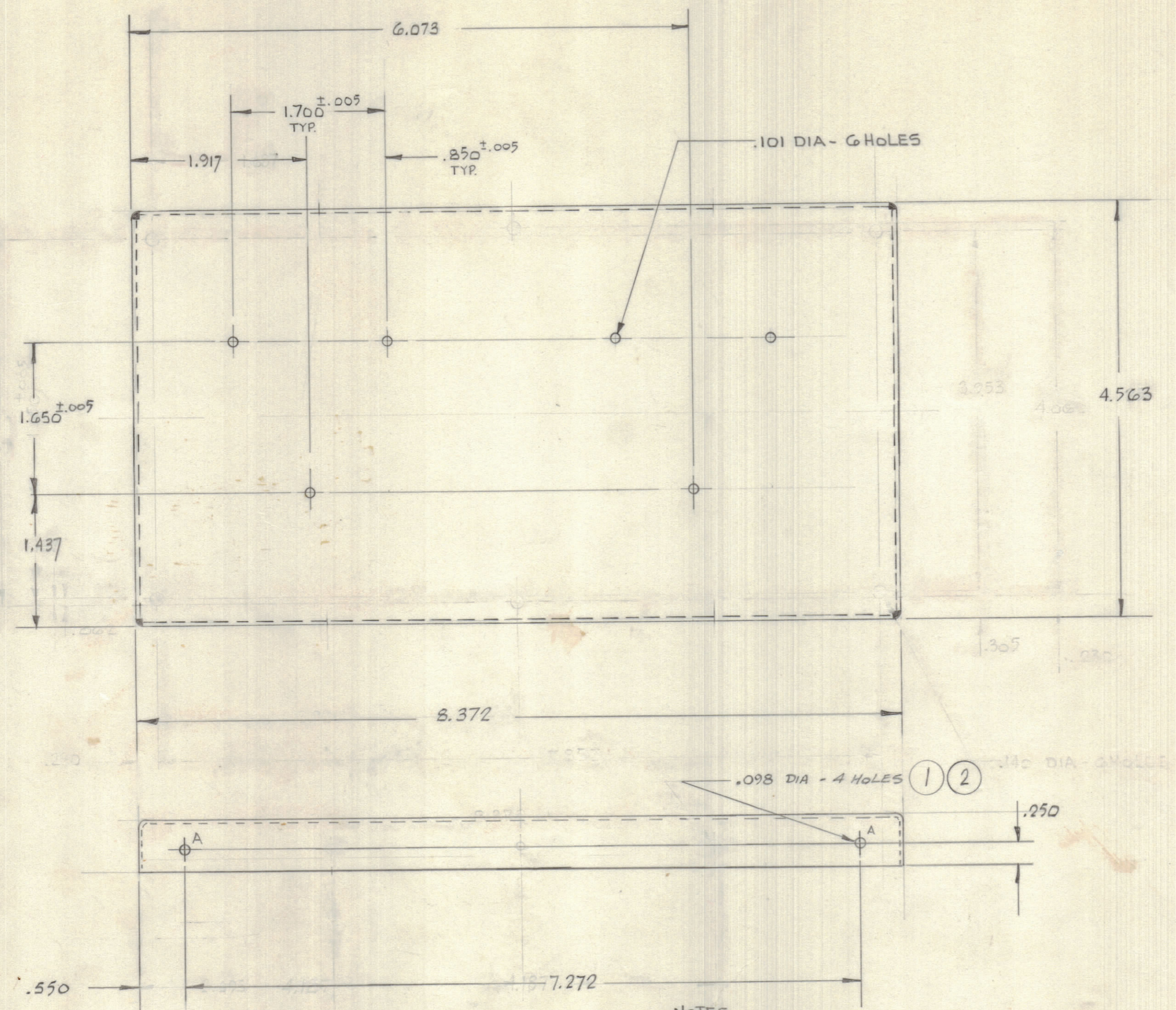


IF IT IS FOUND DESIRABLE TO CHANGE ANY TOLERANCE OR OTHER DETAIL SPECIFIED ON THIS DRAWING NOTIFY THE PURCHASER PROMPTLY.		DIMENSIONS IN INCHES UNLESS OTHERWISE SPECIFIED					
MAXIMUM ALLOWABLE TOLERANCES HAVE BEEN DETERMINED AND DEVIATIONS WILL BE CAUSE FOR REJECTION. REMOVE ALL BURRS AND SHARP EDGES.							
ISSUE	ITEM	CHANGED FROM	DATE	CH. NO.	DRAFTS	CHECKER	ENG. APP.
Φ		PROD RELEASE	JAN 6-71		GC7		
XI		A' HOLE LOCATED	JUNE 11-70				

REQ.	ITEM	PART NO.	DESCRIPTION	SYMBOL
4	1	FS1000G	FASTENER TOP	A
4	2	RI100-094-32	RIVET BLIND EXP.	



MS11204 Φ

- NOTES.
1. MATERIAL: TIN PLATED STEEL
  2. FINISH: HIGH GLOSS WHITE
  3. CORNERS TO BE BRAZED
  4. ALL BENDS .031 INT. RAD.

TOLERANCES		SCALE: 1/1
ALL OTHERS	DEC. DIM. ± .015 FRAC. DIM. ± 1/64 ANGULAR DIM. ± 0° 30'	.XX*.05 .XX*.01 .XXX*.005 DRILL, PUNCH, COMMERCIAL STOCK SIZES AND MANUFACTURERS TOLERANCES ARE NOT INCLUDED.

HF OVEN	086/70	29 APRIL 70
MODEL	PROJECT NO.	DATE

.030	TMC (Canada) LIMITED OTTAWA ONTARIO	
SEE NOTE	COVER	
MATERIAL	WEIGHT PER PC.	OVEN SHELL
TYPE & TEMPER	Proctor	MECH. DES. APP.
HEAT TREAT. SPEC.	DRAWN	ELEC. DES. APP.
FINISH & SPEC. NO.	CHECKED	FINAL APPROVAL
		MS11204 Φ