

MS 11260 C

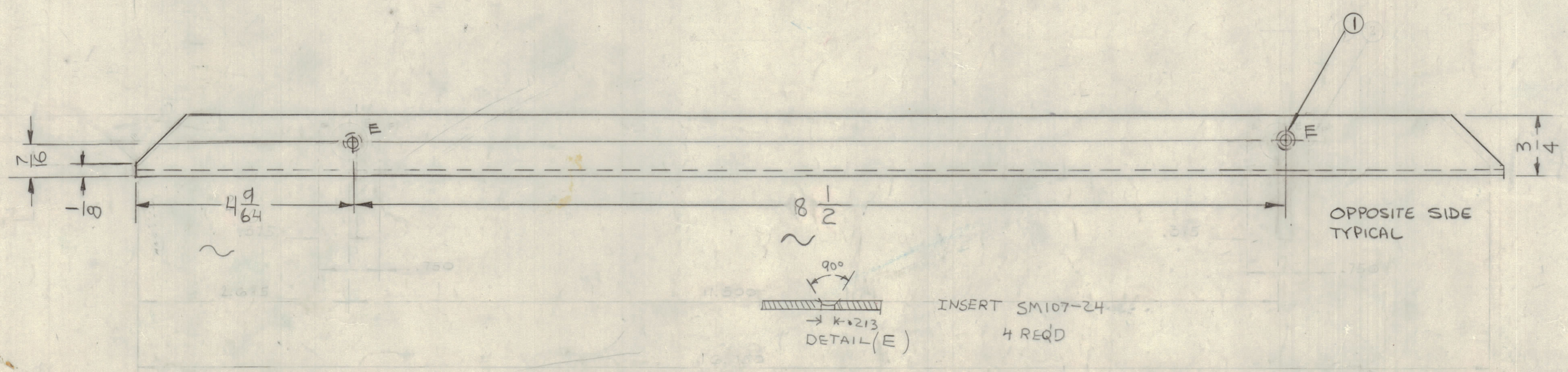
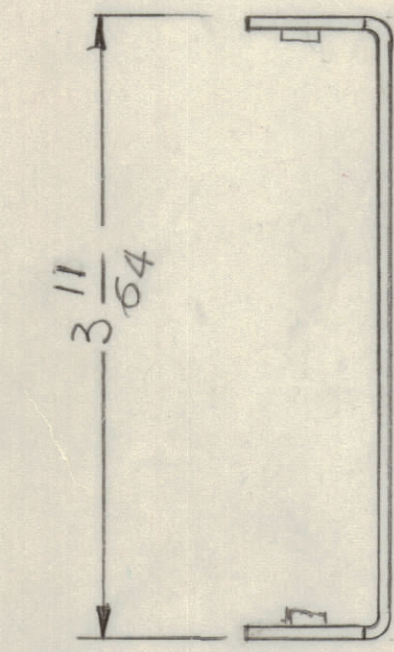
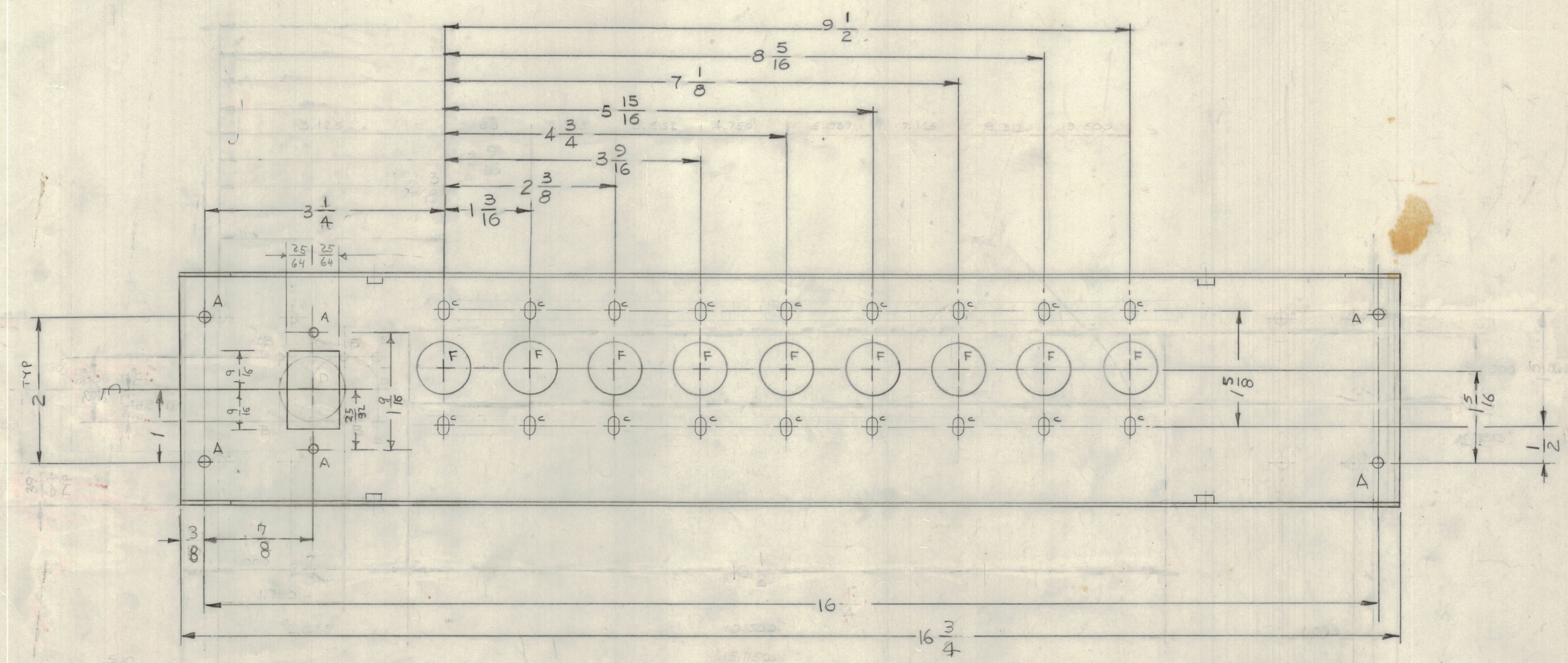
REQ	ITEM	PART NO.	DESCRIPTION	SYMBOL
1	11260		REAR PANEL	

IF IT IS FOUND DESIRABLE TO CHANGE ANY TOLERANCE OR OTHER DETAIL SPECIFIED ON THIS DRAWING NOTIFY THE PURCHASER PROMPTLY

MAXIMUM ALLOWABLE TOLERANCES HAVE BEEN DETERMINED AND DEVIATIONS WILL BE CAUSE FOR REJECTION. REMOVE ALL BURRS AND SHARP EDGES.

DIMENSIONS IN INCHES UNLESS OTHERWISE SPECIFIED

ISSUE	ITEM	CHANGED FROM	DATE	CN NO.	DRAFTS	CHECKER	ENG APP.
Ø		PRODUCTION RELEASE	3/11/50				
A		REVISED PER CEMN	31 JAN 71	833			
B		REVISED PER CEMN	21 JAN 75	1121			
C		REVISED & UPDATED	1-7-81	22015			
D		REVISED & UPDATED	4/14/95				



INSERT SM107-24
K-213
DETAIL (E)
4 REQD

HOLE	DESCRIPTION	REQD
A	7/32 DIA	2
C	9/64 X 9/32 SLOT	18
D	15/16 DIA	1
E	.SEE DETAIL (E)	4
F	3/4 DIA	9

TOLERANCES UNLESS OTHERWISE SPECIFIED	SCALE: FULL SIZE
ALL DEC. DIM. ± .015 OTHERS FRACTIONAL DIM. ± .01 ANGULAR DIM. ± 0° 30'	DRILL, PUNCH, COMMERCIAL STOCK SIZES AND MANUFACTURERS TOLERANCES ARE NOT INCLUDED

INT. BEND RAD .062

REF: LD 10416

V.M.C. 8	084	30 DEC 70
MODEL	PROJECT NO.	ASSY. NO.
DATE		

.064		TMC(Canada)LIMITED	
STOCK SIZE		OTTAWA ONTARIO	
AL. ALLOY:		REAR PANEL	
MATERIAL		G.C.T.	
575 H32		ELEC. DES. APP.	
TYPE & TEMPER		MECH. DES. APP.	
HEAT TREAT SPEC.		CHECKED	
IRIDITE S404		FINAL APPROVAL	
FINISH & SPEC. NO.		MS 11260 D	