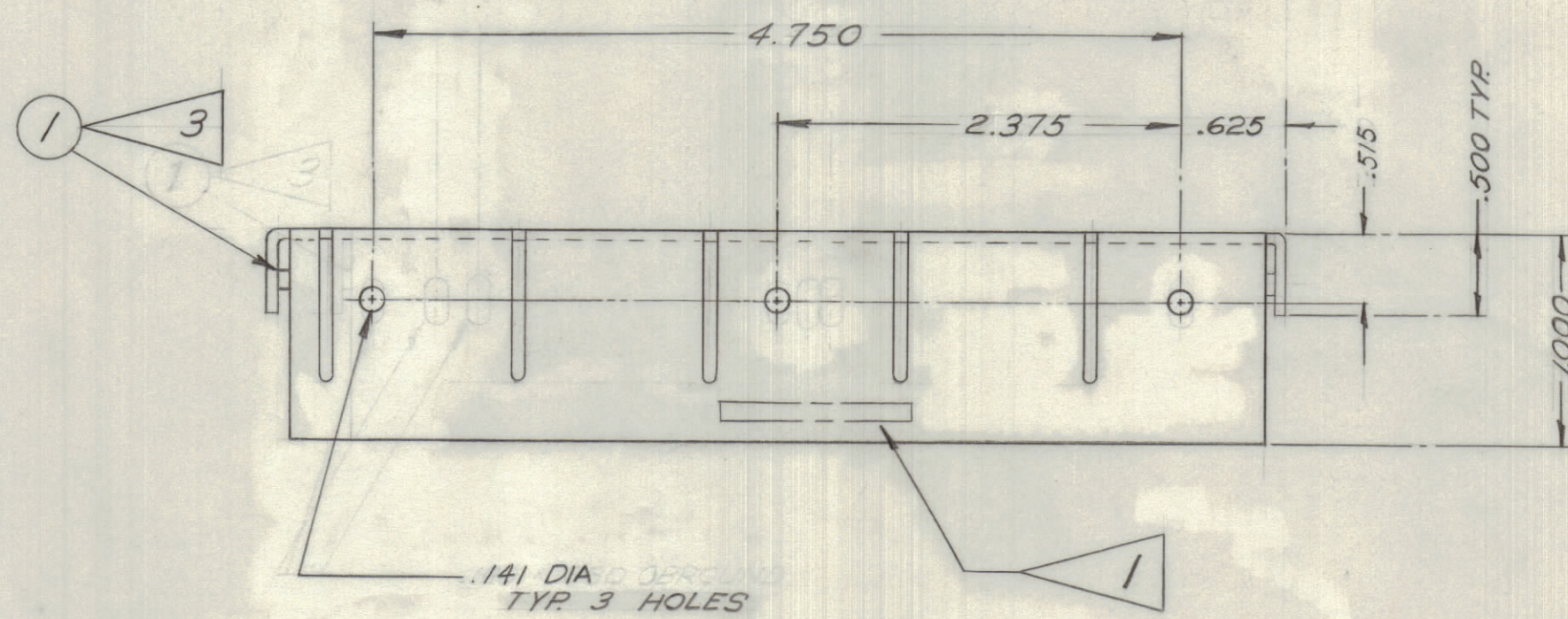
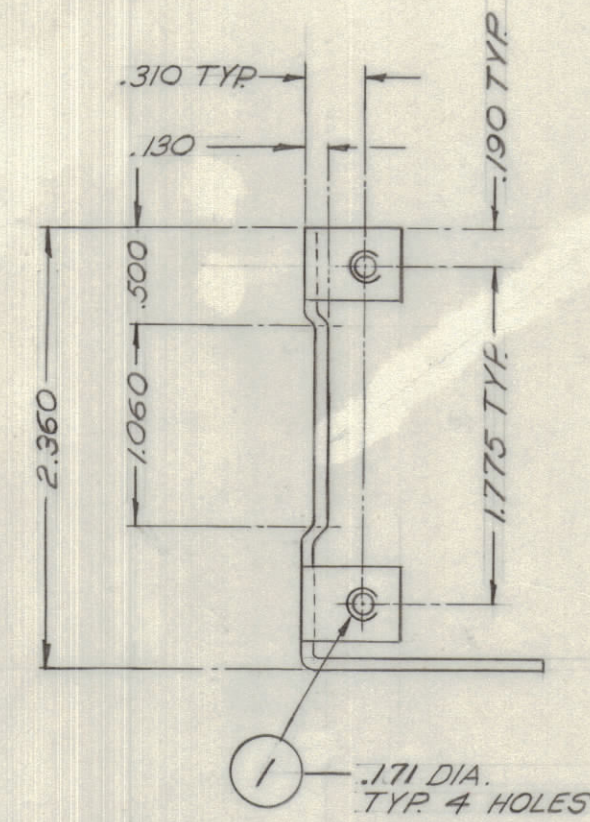
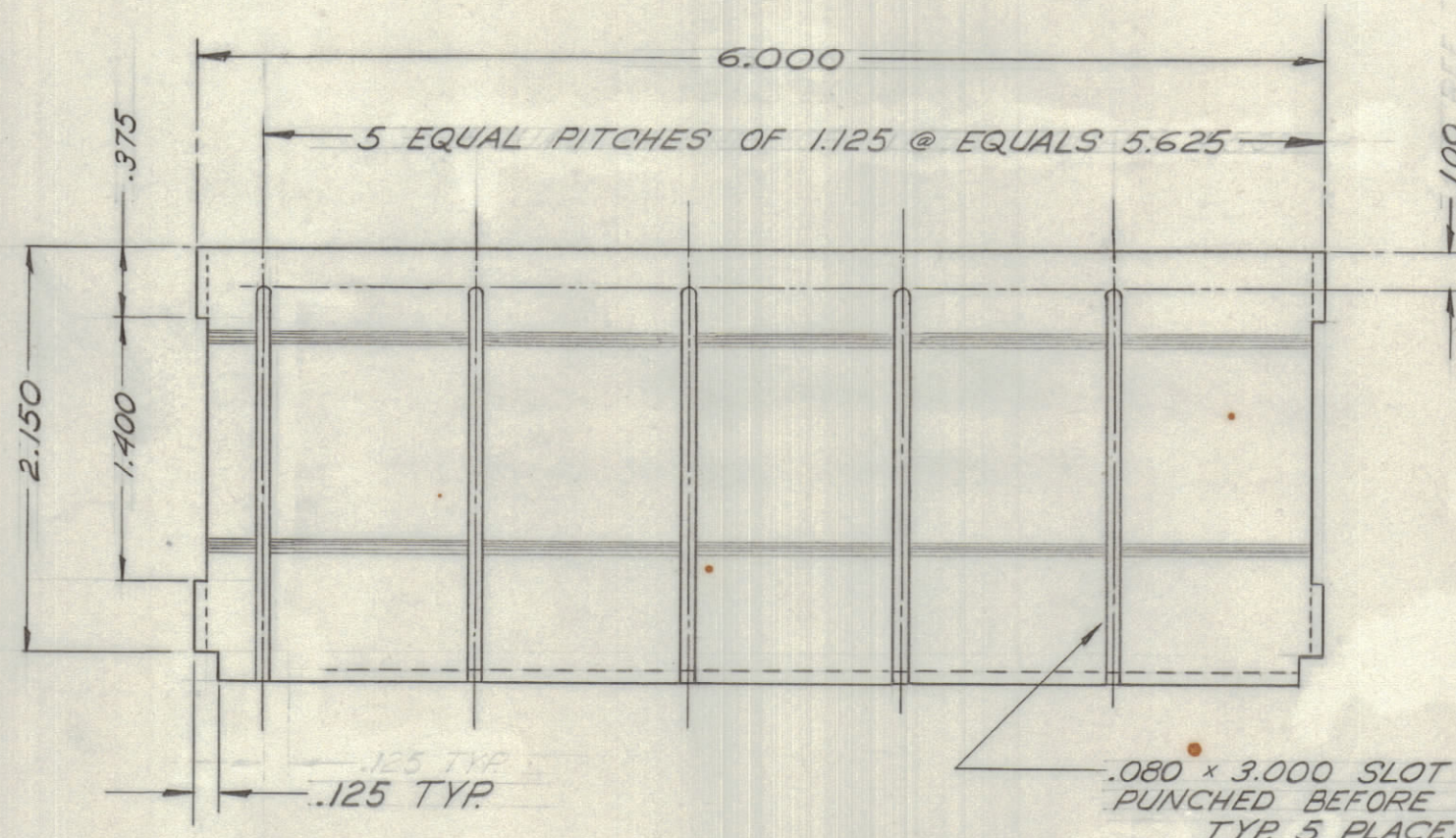


IF IT IS FOUND DESIRABLE TO CHANGE ANY TOLERANCE OR OTHER DETAIL SPECIFIED ON THIS DRAWING NOTIFY THE PURCHASER PROMPTLY.		DIMENSIONS IN INCHES UNLESS OTHERWISE SPECIFIED					
MAXIMUM ALLOWABLE TOLERANCES HAVE BEEN DETERMINED AND DEVIATIONS WILL BE CAUSE FOR REJECTION. REMOVE ALL BURRS AND SHARP EDGES.							
ISSUE	ITEM	CHANGED FROM	DATE	CN. NO.	DRAFTS	CHECKER	ENG. APP.
0		REL TO PROD	26 APR 73		C.C.	Hel	SDW

REQ.	ITEM	PART NO.	DESCRIPTION	SYMBOL
4	1	NT 10002-1	NUTS, SELF-LOCKING	



MS 11494 Ø

3. INSTALL AFTER FINISHING
2. MINIMUM INSIDE BEND RADIUS: .062"
1. METAL STAMP TMC PART NO. V8 HIGH GOTHIC IN APPROX POSITION SHOWN.

NOTES:

MS 11494-1: REAR CARD FILE BRACKET SHOWN  
 MS 11494-2: FRONT CARD FILE BRACKET OPPOSITE TO MS 11494-1

REF: LD 10477

TOLERANCES		SCALE: 1:1
ALL OTHERS	DEC. DIM. ± .05 FRAC. DIM. ± 1/64 ANGULAR DIM. ± 0° 30'	DRILL, PUNCH, COMMERCIAL STOCK SIZES AND MANUFACTURERS TOLERANCES ARE NOT INCLUDED.

RCSR, RCSR-IT	141/72	AX10097, AX10098	10 JAN 73
MODEL	PROJECT NO.	ASS'Y. NO.	DATE

.064 THK.		TMC (Canada) LIMITED OTTAWA ONTARIO	
AL ALY		BRACKET, CARD FILE	
57S H32		C. CHARLES	HCSCHAFER
HEAT TREAT. SPEC.		DRAWN	ELEC. DES. APP.
IRIDITE S-404		CHECKED	S. WITTEN
FINISH & SPEC. NO.		FINAL APPROVAL	
		MS 11494 Ø	