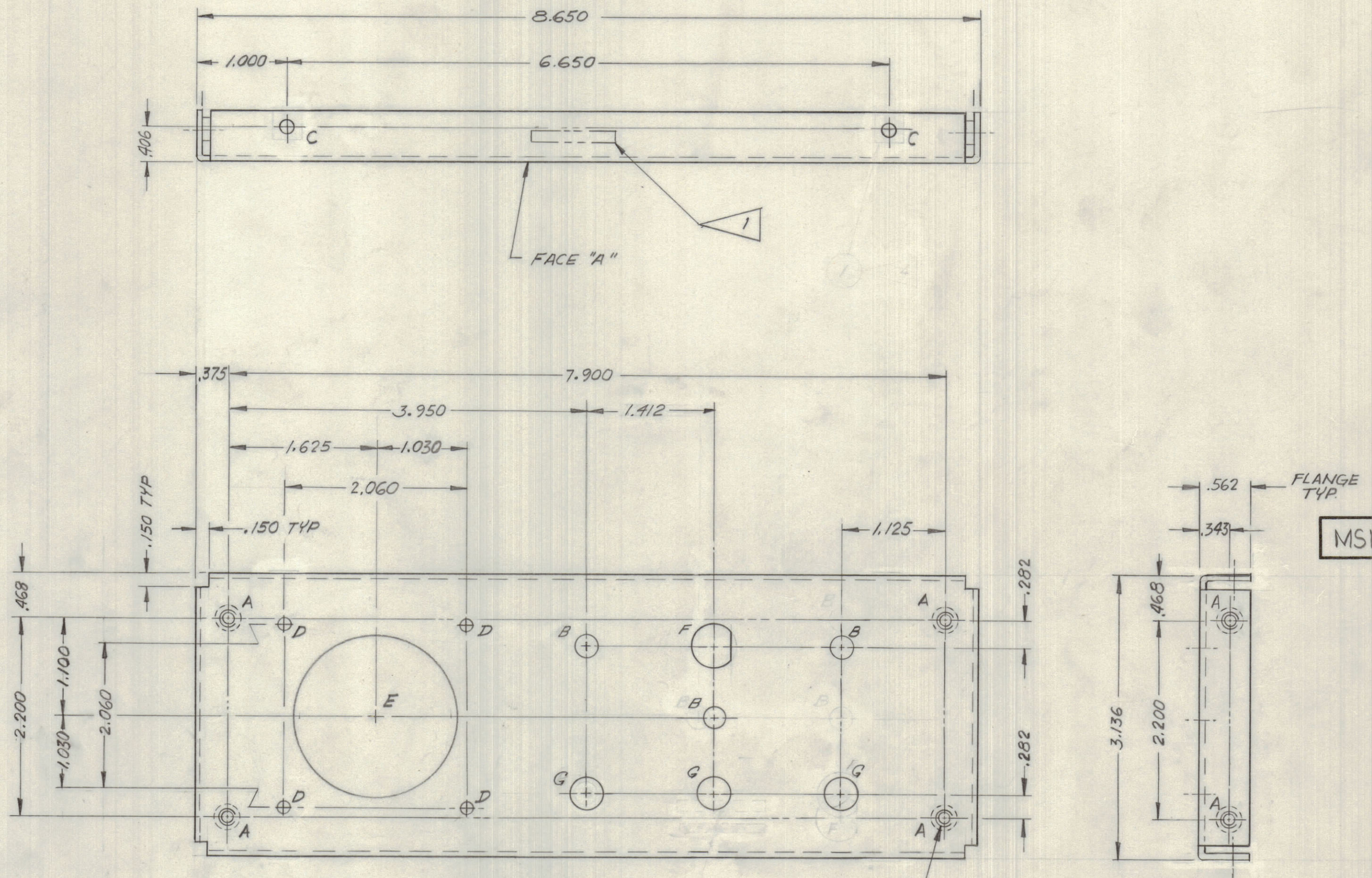


| IF IT IS FOUND DESIRABLE TO CHANGE ANY TOLERANCE OR OTHER DETAIL SPECIFIED ON THIS DRAWING NOTIFY THE PURCHASER PROMPTLY.       |      |              |           | DIMENSIONS IN INCHES UNLESS OTHERWISE SPECIFIED |        |         |           |
|---|------|--------------|-----------|---|--------|---------|-----------|
| MAXIMUM ALLOWABLE TOLERANCES HAVE BEEN DETERMINED AND DEVIATIONS WILL BE CAUSE FOR REJECTION. REMOVE ALL BURRS AND SHARP EDGES. |      |              |           |   |        |         |           |
| ISSUE   | ITEM | CHANGED FROM | DATE      | CN. NO.   | DRAFTS | CHECKER | ENG. APP. |
| Ø   |      | REL TO PROD  | 30 APR 73 |   | C.C.   | H.C.S.  | SDW       |

| REQ. | ITEM | PART NO.    | DESCRIPTION      | SYMBOL  |
|------|------|-------------|------------------|---------|
| 8    | 2    | NT129-632-4 | NUT, ROUND SWAGE | A HOLES |



| HOLE | DESCRIPTION  | QTY |
|------|--------------|-----|
| A    | .191/194 DIA | 8   |
| B    | .250 DIA     | 3   |
| C    | .171 DIA     | 4   |
| D    | .140 DIA     | 4   |
| E    | 1.812 DIA    | 1   |
| F    | .500 DIA "D" | 1   |
| G    | .375 DIA     | 3   |

4. INSTALL AFTER FINISHING.
3. MINIMUM INSIDE BEND RADIUS .064.
2. FINISH ALL OVER & PAINT FACE "A" & SIDES.  
S-404 IRIDITE 14-2 AL-COAT.  
S-114 ZINC CHROMATE PRIMER.
1. METAL STAMP TMC PART NO. 1/8 HIGH GOTHIC IN APPROX. POSITION SHOWN OPPOSITE SIDE.

NOTES: ~

|                    |                |                                       |  |
|--------------------|----------------|---------------------------------------|--|
| .064 THK.          |                | TMC (Canada) LIMITED                  |  |
| STOCK SIZE         |                | OTTAWA ONTARIO                        |  |
| AL ALLOY           |                | PANEL FRONT                           |  |
| MATERIAL           | WEIGHT PER PC. | R.V. MAMARIL H.C. SCHAFER             |  |
| 575 H32            |                | DRAWN ELEC. DES. APP. MECH. DES. APP. |  |
| TYPE & TEMPER      |                | S. WITTEN                             |  |
| HEAT TREAT. SPEC.  |                | CHECKED FINAL APPROVAL                |  |
| SEE NOTE 2         |                | MS11500 Ø                             |  |
| FINISH & SPEC. NO. |                |                                       |  |

| TOLERANCES |                       |           | SCALE: 1:1                     |
|------------|-----------------------|-----------|--------------------------------|
| ALL OTHERS | DEC. DIM. ± .05       | .XX*.01   | DRILL, PUNCH, COMMERCIAL STOCK |
|            | FRAC. DIM. ± 1/64     | .XXX*.005 | SIZES AND MANUFACTURERS        |
|            | ANGULAR DIM. ± 0° 30' |           | TOLERANCES ARE NOT INCLUDED.   |

|         |             |           |           |
|---------|-------------|-----------|-----------|
| RCSR-1T | 141/72      | A11090    | 11 JAN 73 |
| MODEL   | PROJECT NO. | ASSY. NO. | DATE      |