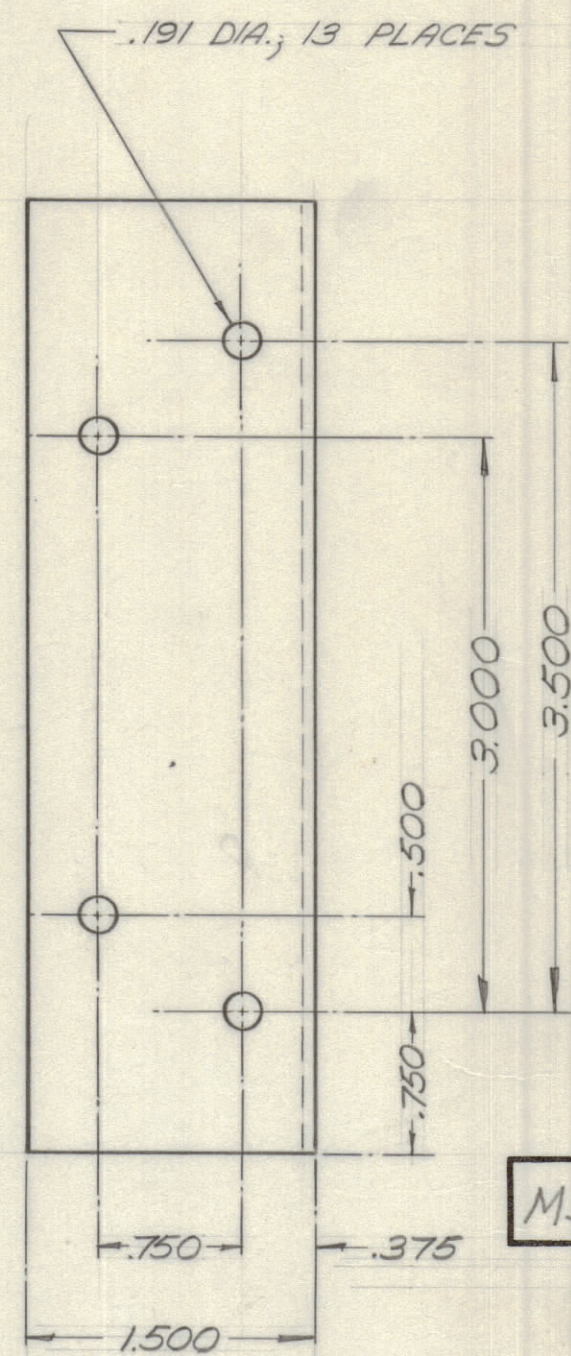
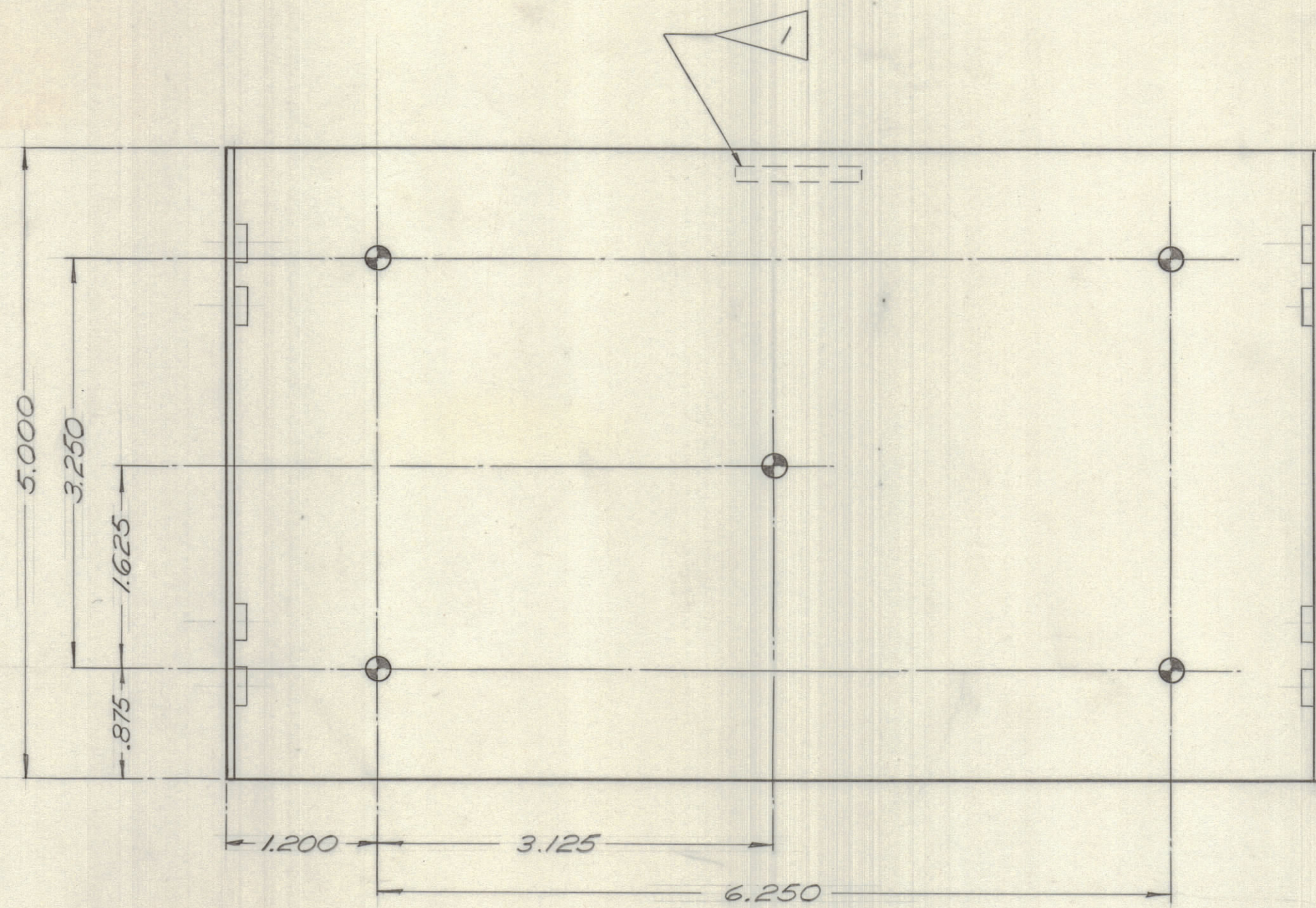
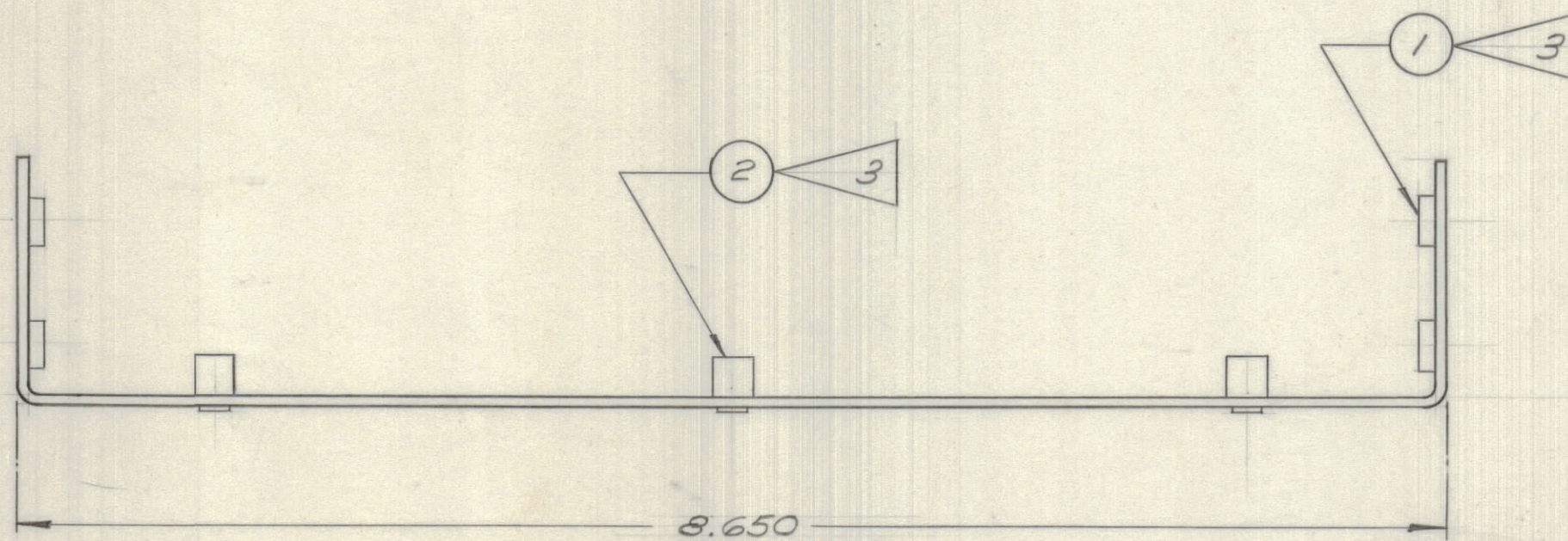


IF IT IS FOUND DESIRABLE TO CHANGE ANY TOLERANCE OR OTHER DETAIL SPECIFIED ON THIS DRAWING NOTIFY THE PURCHASER PROMPTLY.		DIMENSIONS IN INCHES UNLESS OTHERWISE SPECIFIED					
MAXIMUM ALLOWABLE TOLERANCES HAVE BEEN DETERMINED AND DEVIATIONS WILL BE CAUSE FOR REJECTION. REMOVE ALL BURRS AND SHARP EDGES.							
ISSUE	ITEM	CHANGED FROM	DATE	CN. NO.	DRAFTS	CHECKER	ENG. APP.
0		PROD RELEASE	19 July 73			C.L. HED	

REQ.	ITEM	PART NO.	DESCRIPTION	SYMBOL
8	1	NT129-632-4	NUT, PLAIN CLINCH	⊕
5	2	TE-108-1	STANDOFF, RIVET TYPE	⊕



MS-11543 ⌀



3. INSTALL AFTER FINISHING
2. MINIMUM INSIDE BEND RADIUS: .064"
1. METAL STAMP TMC PART NO. 1/8 HIGH GOTHIC, IN APPROXIMATE POSITION SHOWN

NOTES:

TOLERANCES		SCALE: 1:1
ALL	DEC. DIM. ± .XX	DRILL, PUNCH, COMMERCIAL STOCK
OTHERS	FRAC. DIM. ± 1/64	SIZES AND MANUFACTURERS
	ANGULAR DIM. ± 0° 30'	TOLERANCES ARE NOT INCLUDED.

ON-AIR IND. MOD.	145/73	AX10099	19 JULY 73
MODEL	PROJECT NO.	ASS'Y. NO.	DATE

.064 THK.		TMC (Canada) LIMITED	
STOCK SIZE		OTTAWA ONTARIO	
AL ALY		CHASSIS, MAIN	
MATERIAL	WEIGHT PER PC.		
575-H32		C. CHARLES	H.C. SCHAFFER
TYPE & TEMPER		DRAWN	ELEC. DES. APP.
			MECH. DES. APP.
HEAT TREAT. SPEC.		CHECKED	FINAL APPROVAL
IRIDITE S404			
FINISH & SPEC. NO.		MS-11543 ⌀	