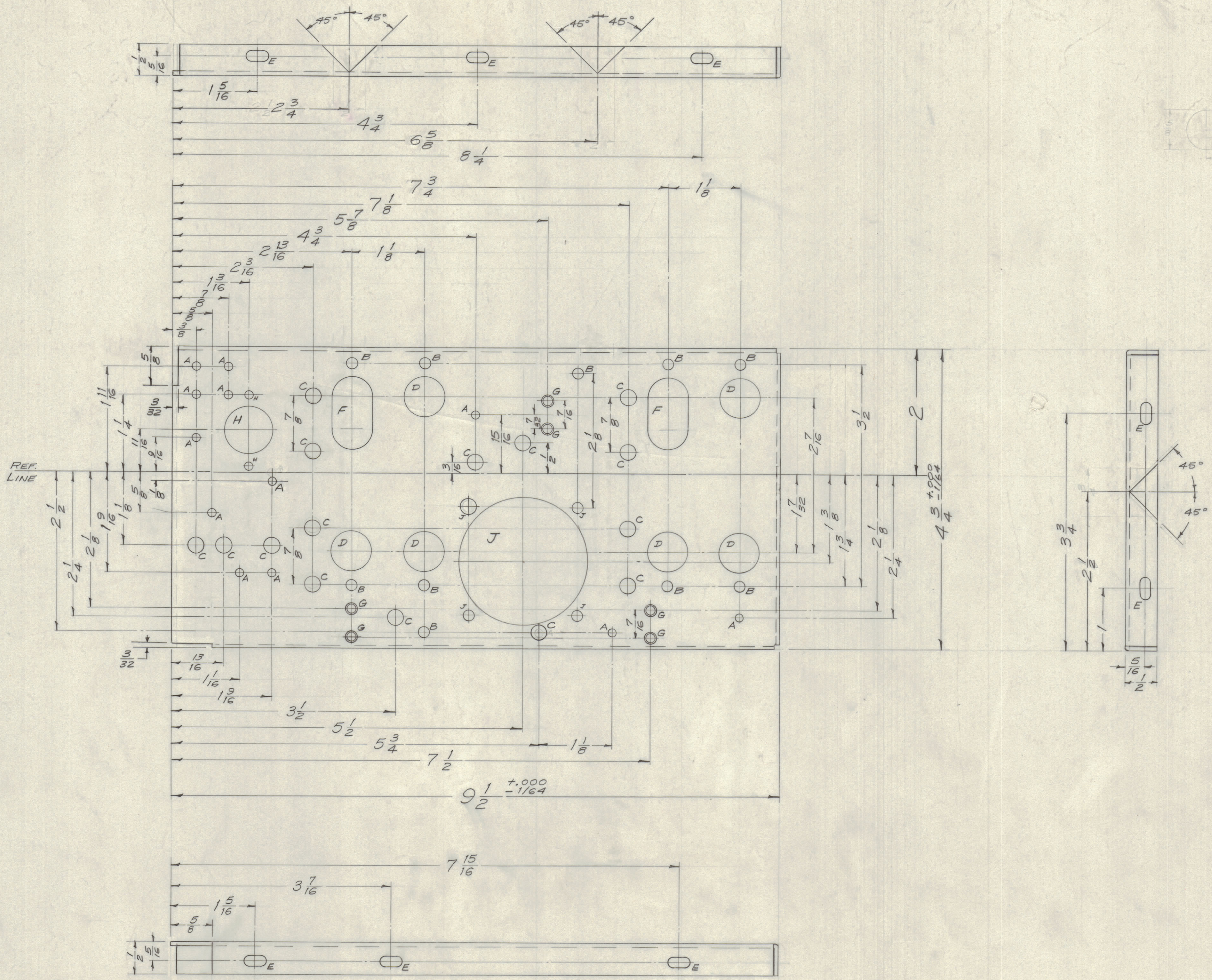


IF IT IS FOUND DESIRABLE TO CHANGE ANY TOLERANCE OR OTHER DETAIL SPECIFIED ON THIS DRAWING NOTIFY THE PURCHASER PROMPTLY.  
 MAXIMUM ALLOWABLE TOLERANCES HAVE BEEN DETERMINED AND DEVIATIONS WILL BE CAUSE FOR REJECTION. REMOVE ALL BURRS AND SHARP EDGES

**NOTICE TO PERSONS RECEIVING THIS DRAWING**

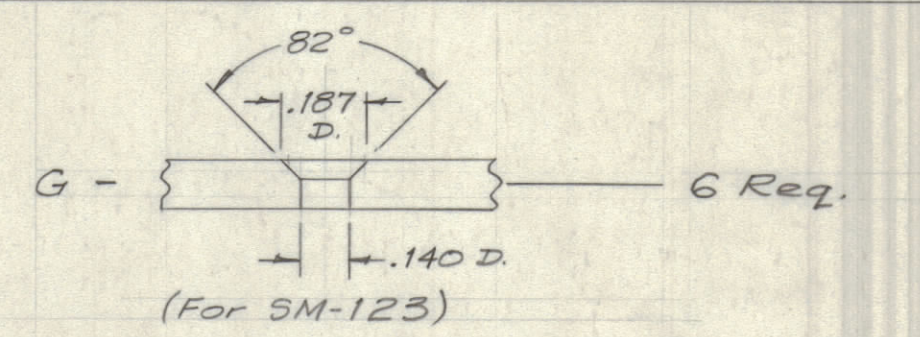
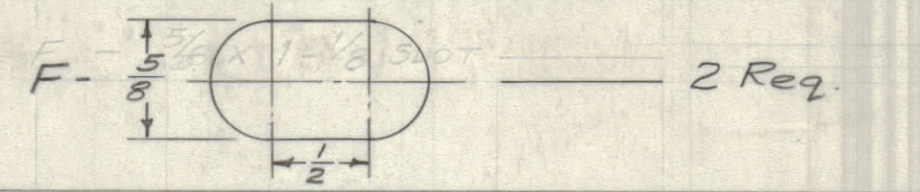
THE TECHNICAL MATERIEL CORPORATION claims proprietary right in the material disclosed hereon. This drawing is issued in confidence for engineering information only and may not be re-produced or used to manufacture anything shown hereon without permission from THE TECHNICAL MATERIEL CORPORATION to the user. This drawing is loaned for mutual assistance and is subject to recall at any time.

Property of:  
 THE TECHNICAL MATERIEL CORPORATION  
 MAMARONECK, NEW YORK

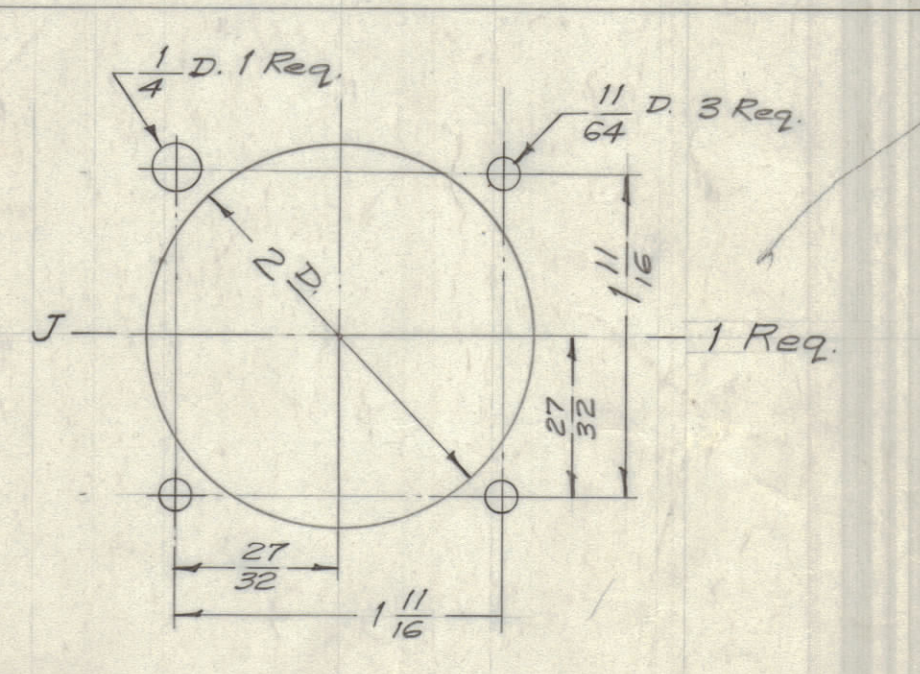
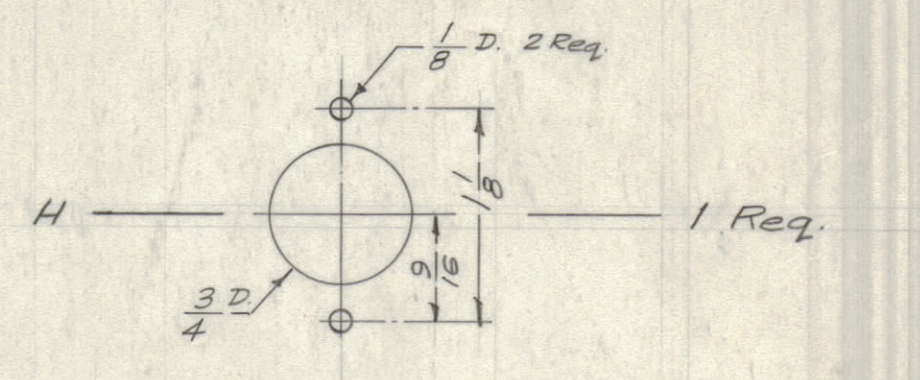
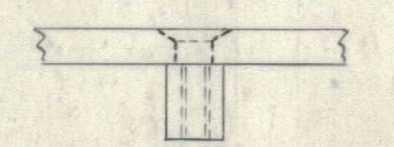


**HOLE LEGEND**

- A - 1/8 (.125) Diam. — 12 Req.
- B - 1/64 (.171) Diam. — 10 Req.
- C - 1/4 (.250) Diam. — 15 Req.
- D - 5/8 (.625) Diam. — 6 Req.
- E - 1/64 x 1/32 SLOT — 8 Req.



Note - Mount SM-123 in all "G" Holes as shown below.



MS-1234 D

D	1	S-404 YEL IRIDITE WAS	7/1/59	1001	16	EMN	
C	2	S-101 CAUSTIC DIP	7/1/58	404	16		
B	2	ALL V NOTCHES ON LIPS WERE SQUARE NOTCHES	5/21/59	2	16		
A	1	ONE "A" HOLE ADDED	5/21/59	1	16		
ISSUE	ITEM	CHANGED FROM	DATE	CN. NO.	DRAFTS	CHECKER	ENG. APP.
TOLERANCES		SCALE: FULL					
ALL	DEC. DIM. ±	DRILL, PUNCH, COMMERCIAL STOCK					
OTHERS	FRAC. DIM. ± 1/64	SIZES AND MANUFACTURERS					
	ANGULAR DIM. ±	TOLERANCES ARE NOT INCLUDED.					

Ref. LD-419 Lettering

REQ. ITEM	PART NO.	DESCRIPTION	SYMBOL
	.064 THK.	THE TECHNICAL MATERIEL CORP.	
		MAMARONECK, NEW YORK	
STOCK SIZE		CHASSIS, DRIVER	
MATERIAL		ALUMINUM	
WEIGHT PER PC.		5052-H32	
TYPE & TEMPER		1697/58	
HEAT TREAT. SPEC.		DRAWN	
FINISH & SPEC. NO.		ELEG. DES. APP. <b>REP</b>	
		MECH. DES. APP.	
		CHECKED	
		FINAL APPROVAL	
		MS-1234 D	

1	RFA-1	PAL-350	5-7-58
REQ PER UNIT	MODEL	PROJECT NO.	DATE
		ASSY. NO.	
		USED ON	