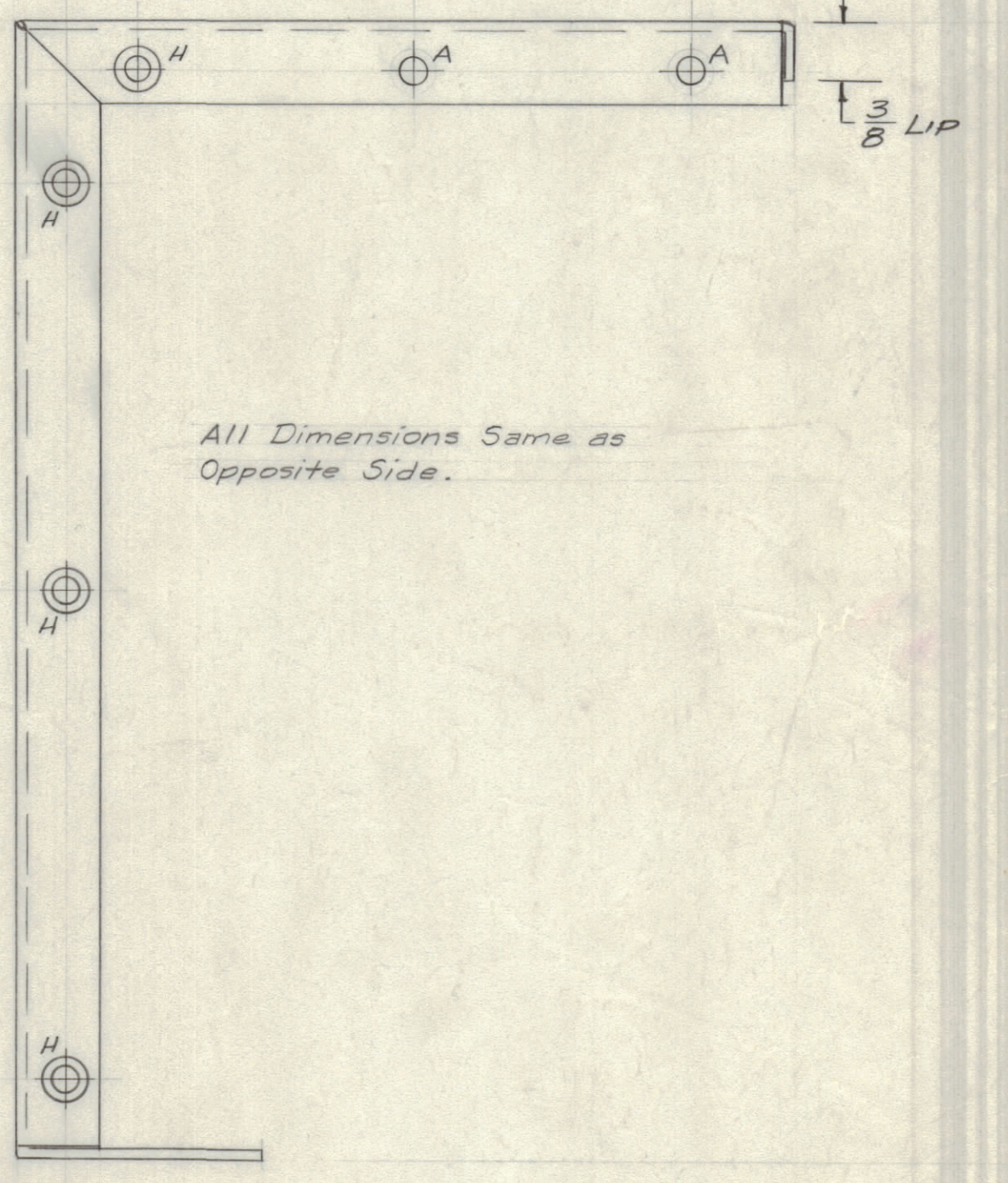
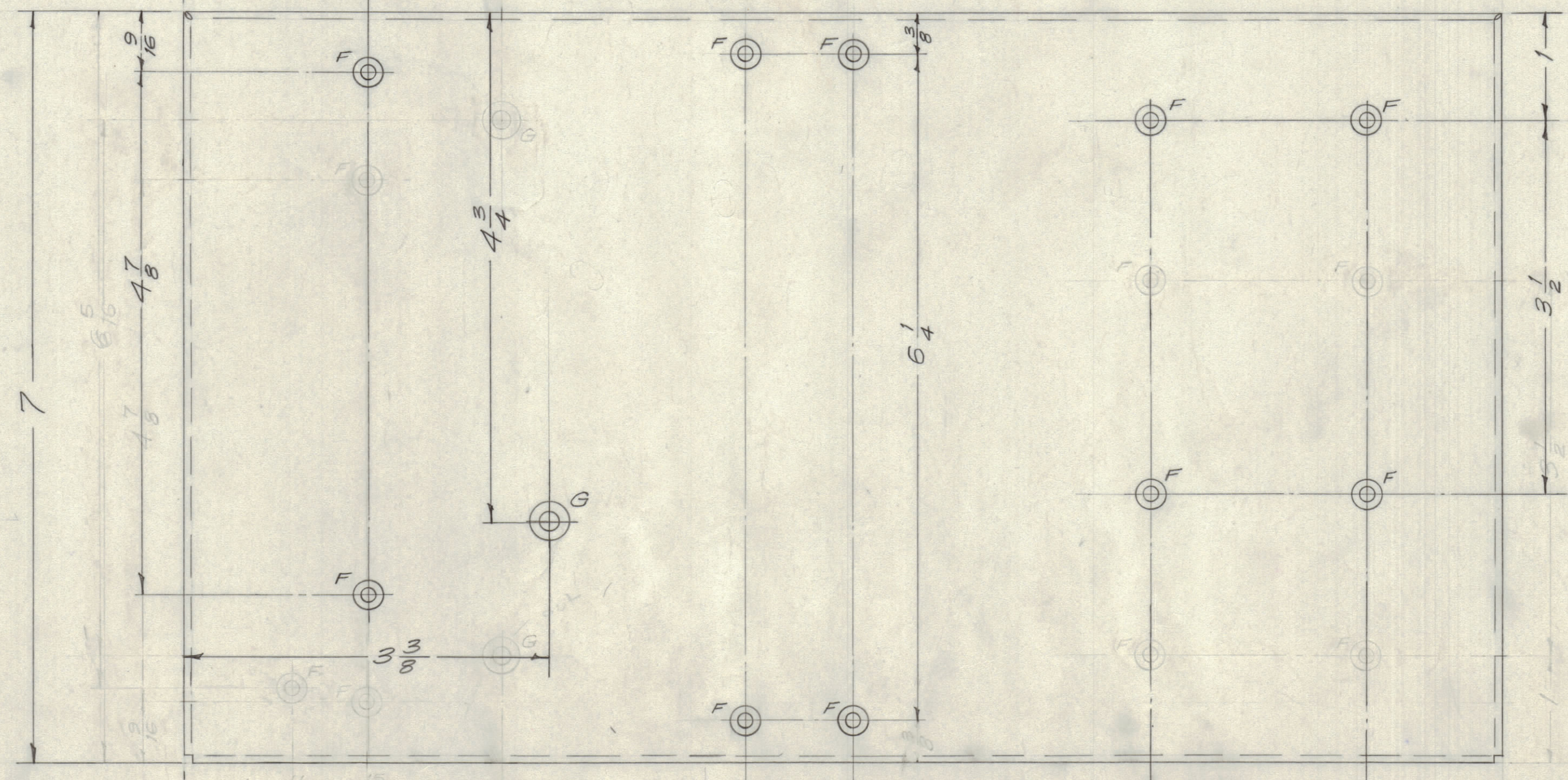
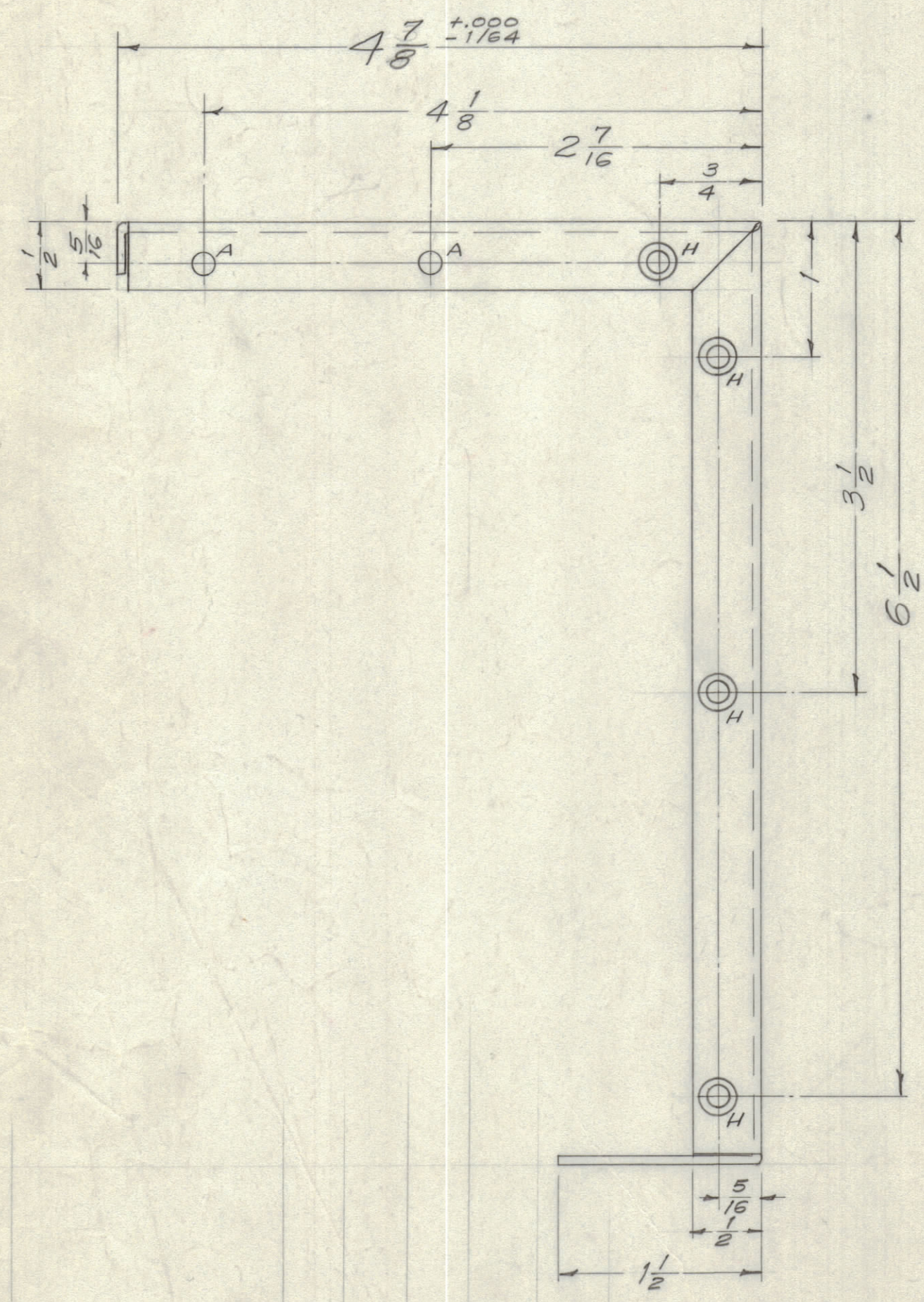
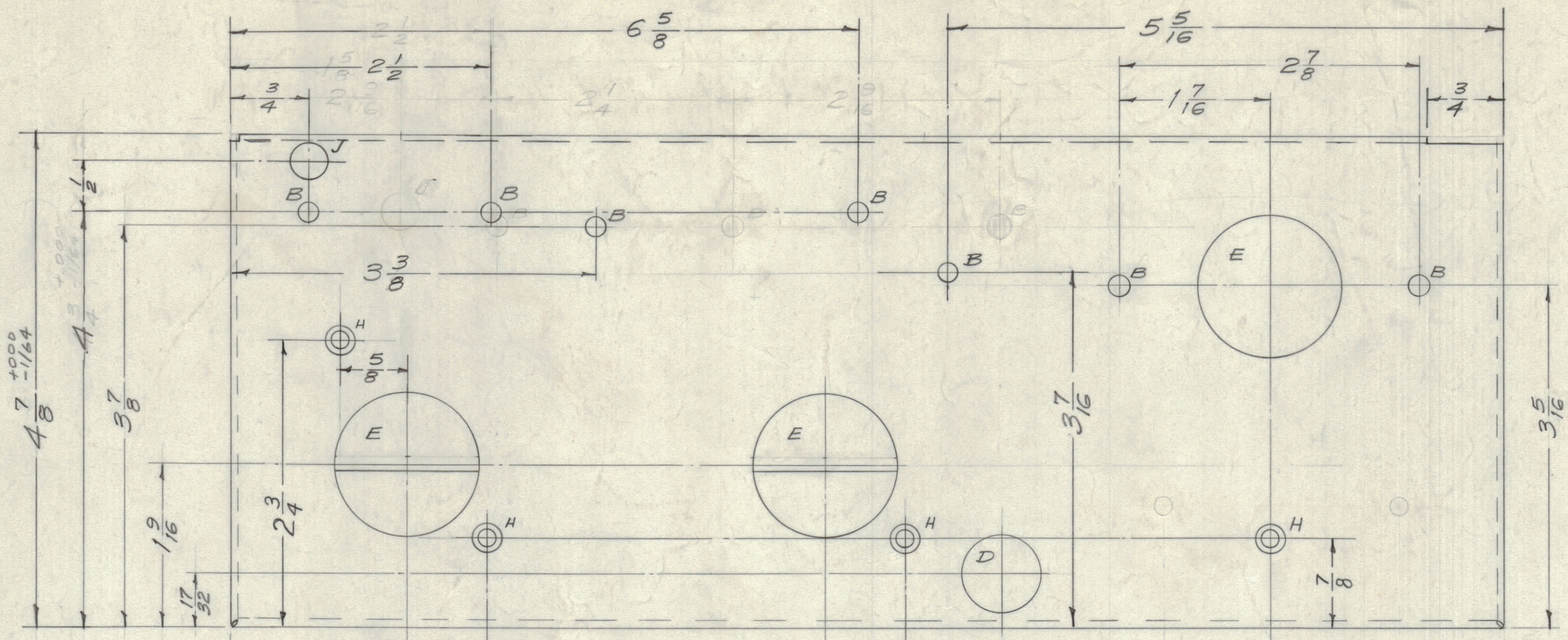


IF IT IS FOUND DESIRABLE TO CHANGE ANY TOLERANCE OR OTHER DETAIL SPECIFIED ON THIS DRAWING NOTIFY THE PURCHASER PROMPTLY.  
 MAXIMUM ALLOWABLE TOLERANCES HAVE BEEN DETERMINED AND DEVIATIONS WILL BE CAUSE FOR REJECTION. REMOVE ALL BURRS AND SHARP EDGES

**NOTICE TO PERSONS RECEIVING THIS DRAWING**

THE TECHNICAL MATERIEL CORPORATION claims proprietary right in the material disclosed herein. This drawing is issued in confidence for engineering information only and may not be reproduced or used to manufacture anything shown hereon without permission from THE TECHNICAL MATERIEL CORPORATION to the user. This drawing is loaned for mutual assistance and is subject to recall at any time.

Property of:  
 THE TECHNICAL MATERIEL CORPORATION  
 MAMARONECK, NEW YORK



**HOLE LEGEND**

A	1 1/64 (.171) Diam.	6 Req.
B	1 3/64 (.203) Diam.	7 Req.
<del>C</del>	<del>1 5/64 (.234) Diam.</del>	<del>DELETED</del>
D	3/4 (.750) Diam.	2 Req.
E	1 - 3/8 (1.375) Diam.	3 Req.
F	(#6 FHS) 82° chamfer, .284 diameter, #27 Dr. (.144)	10 Req.
<del>G</del>	<del>(#10 FHS) 82° chamfer, .590 diameter, #9 (.196)</del>	<del>71 REQUIRED</del>
H	(For SM-III-D-206) 82° chamfer, .281 diameter, #218	14 Req.
J	3/8 (.375) D	1 Req.

Note:  
 Mount SM-III-D-206 in "H" Holes as shown below. Flare must be below surface of plate.

All Dimensions Same as Opposite Side.

ISSUE	ITEM	CHANGED FROM	DATE	CN. NO.	DRAFTS	CHECKER	ENG. APP.
H	1	3-404 YEL IRIDITE WAS S-101 CAUSTIC DIP	12/1/59	1001	16		EMN
G	2	1/8" Hole Added	8/21/58	413	16		
F	1	1/8" Hole moved - was 3-1/2 from Left Side	7/1/58	404	16		
F	2	3/8 Lip Added to top of chassis					
F	3	Old height was 4 - 3/4 Now 1 5/8 - 7/8					
E	1	ONE "B" Hole Added (.031)	1/1/58	5	16		
E	2	FOUR "H" Holes Added (for same class) (.125)					
D	1	ONE "B" Hole Added (.031)	9/2/58	4	16		
C	1	ONE "F" Hole Dele. (.031)	8/27/53	3	16		
B	1	"J" Hole Moved (.031)	8/1/58	2	16		
A	3	One "B" Hole Added (.031)	5/12/58	1	16	REB	
A	2	Two "B" Holes Moved					
A	1	"J" Hole Added					

ISSUE	ITEM	CHANGED FROM	DATE	CN. NO.	DRAFTS	CHECKER	ENG. APP.
ALL OTHERS		DEC. DIM. ± 1/64 FRAC. DIM. ± 1/64 ANGULAR DIM. ±					
		DRILL, PUNCH, COMMERCIAL STOCK SIZES AND MANUFACTURERS TOLERANCES ARE NOT INCLUDED.					

Ref-8LD-420 (Lettering)

REQ. ITEM	PART NO.	DESCRIPTION	SYMBOL
	.064 THK	THE TECHNICAL MATERIEL CORP. MAMARONECK, NEW YORK	
	STOCK SIZE		
	Aluminum	CHASSIS, PI NETWORK	
	MATERIAL	WEIGHT PER PC.	
	5052-H32		
	TYPE & TEMPER	165-B-58	REB
		DRAWN	ELEC. DES. APP. MECH. DES. APP.
		HQ	
	HEAT TREAT. SPEC.	CHECKED	FINAL APPROVAL
	S-404 YEL. IRIDITE		
	FINISH & SPEC. NO.		MS-1235 H

REQ. PER UNIT	MODEL	PROJECT NO.	ARRY. NO.	DATE
1	RFA-1	PAL-350		5-8-58