

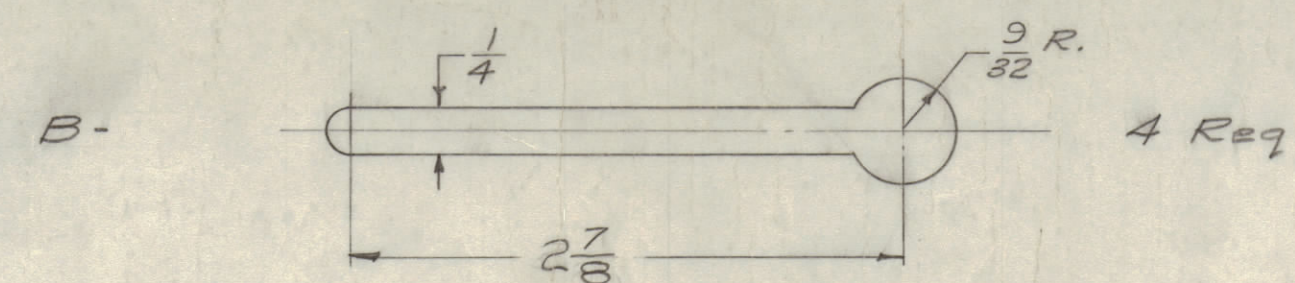
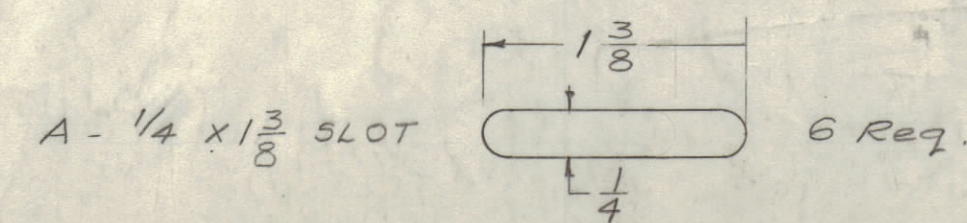
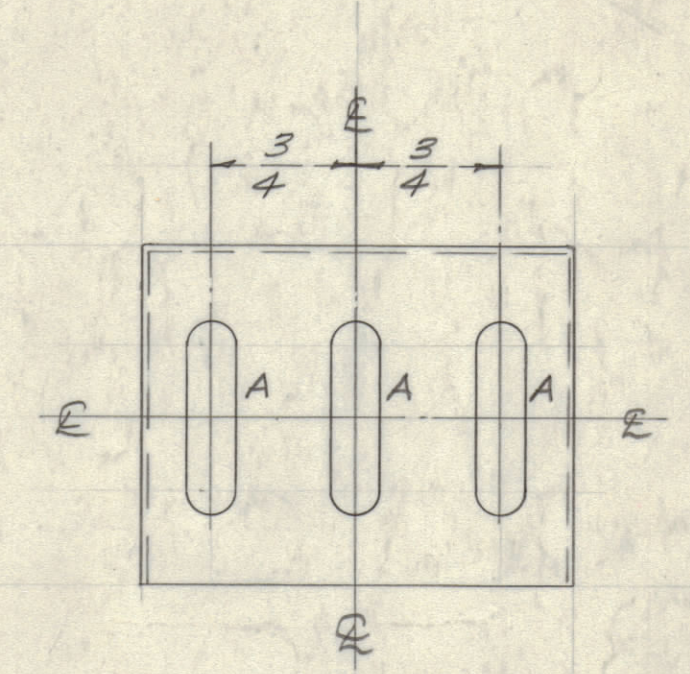
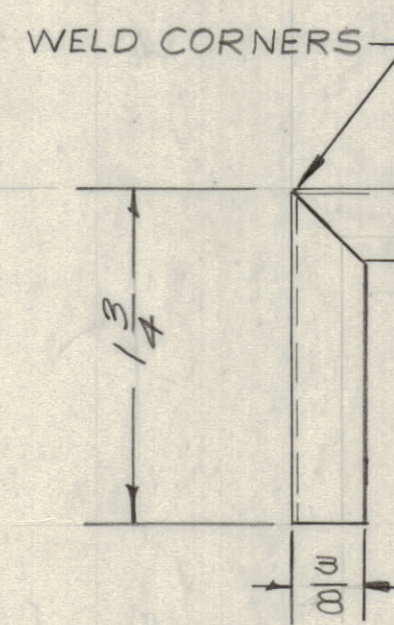
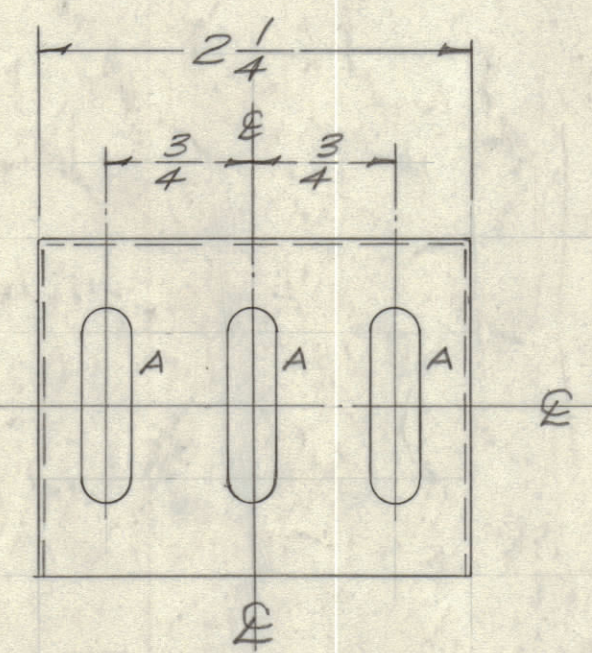
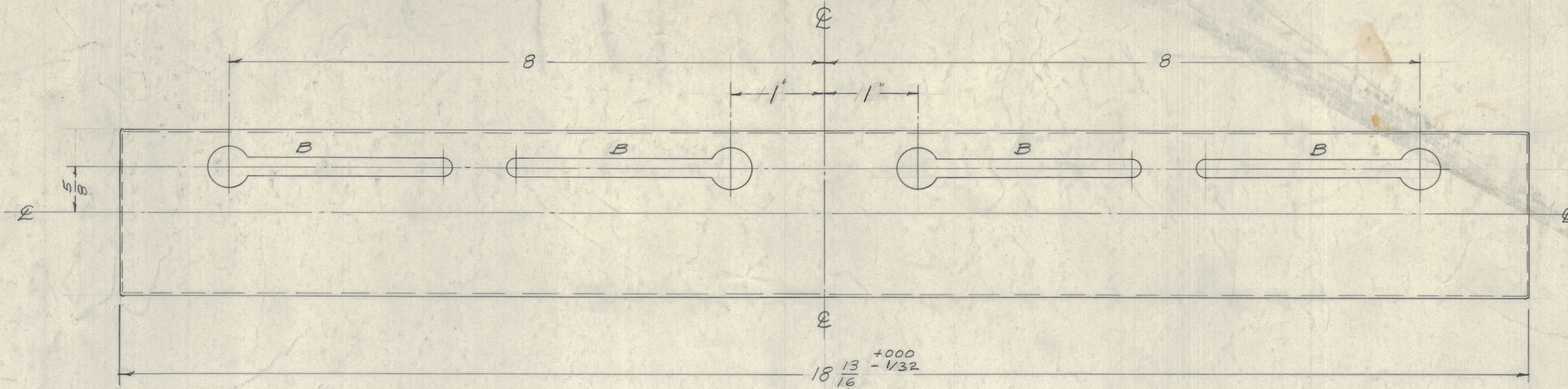
IF IT IS FOUND DESIRABLE TO CHANGE ANY TOLERANCE OR OTHER DETAIL SPECIFIED ON THIS DRAWING NOTIFY THE PURCHASER PROMPTLY.  
 MAXIMUM ALLOWABLE TOLERANCES HAVE BEEN DETERMINED AND DEVIATIONS WILL BE CAUSE FOR REJECTION. REMOVE ALL BURRS AND SHARP EDGES

NOTICE TO PERSONS RECEIVING THIS DRAWING

THE TECHNICAL MATERIEL CORPORATION claims proprietary right in the material disclosed hereon. This drawing is issued in confidence for engineering information only and may not be reproduced or used to manufacture anything shown hereon without permission from THE TECHNICAL MATERIEL CORPORATION to the user. This drawing is loaned for mutual assistance and is subject to recall at any time.

Property of:

THE TECHNICAL MATERIEL CORPORATION  
 MAMARONECK, NEW YORK



FINISH: S371 STEEL DEGREASE  
 S105 CADMIUM PLATE PRIMER  
 S114 ZINC CHROMATE PRIMER  
 S115 SMOOTH GREY ENAMEL

D	1	FINISH NOTE RELOCATED ADDED.	95.23	9803	MR	
C	1	"A" WAS 1/4 X 1 SLOT	10/5/60	3120	GD	
B	2	WELDED CORNERS ADDED	8.8.60	2718	AL	9916
	1	DIM 2 7/8 WAS 3/8				
	1	LIP DIM 3/8 WAS 1/4				
A	4	1" DIM OF E WAS 1 1/4	8	2679	CW	
	3	"B" HOLE WAS 2 7/8				
	2	SLOT SIZE WAS 1/8 GA.				
	1	18 13/16 DIM. WAS 18 15/16 DIM.				
ISSUE ITEM		CHANGED FROM	DATE	CN. NO.	DRAFTS	CHECKER
		TOLERANCES				
		SCALE: FULL				
ALL OTHERS	DEC. DIM. ± 1/64	DRILL, PUNCH, COMMERCIAL STOCK SIZES AND MANUFACTURERS TOLERANCES ARE NOT INCLUDED.				
	ANGULAR DIM. ±					

1	TOC	PROJECT NO.	ASSY. NO.	DATE	8-4-58
REQ PER UNIT	MODEL	PROJECT NO.	ASSY. NO.	DATE	8-4-58
USED ON					

REQ. ITEM	PART NO.	DESCRIPTION	SYMBOL
1	136A.1093 THK	THE TECHNICAL MATERIEL CORP. MAMARONECK, NEW YORK	
STOCK SIZE			
Steel	ff	SUPPORT, EQUIPMENT	
MATERIAL			
Cold Rolled			
TYPE & TEMPER		68-4-58	
ff		DRAWN	ELEC. DES. APP. MECH. DES. APP.
HEAT TREAT. SPEC.		CHECKED	FINAL APPROVAL
SEE NOTE		WAS 8-1095 Sketch	
FINISH & SPEC. NO.			MS-1307 D

MS-1307 D