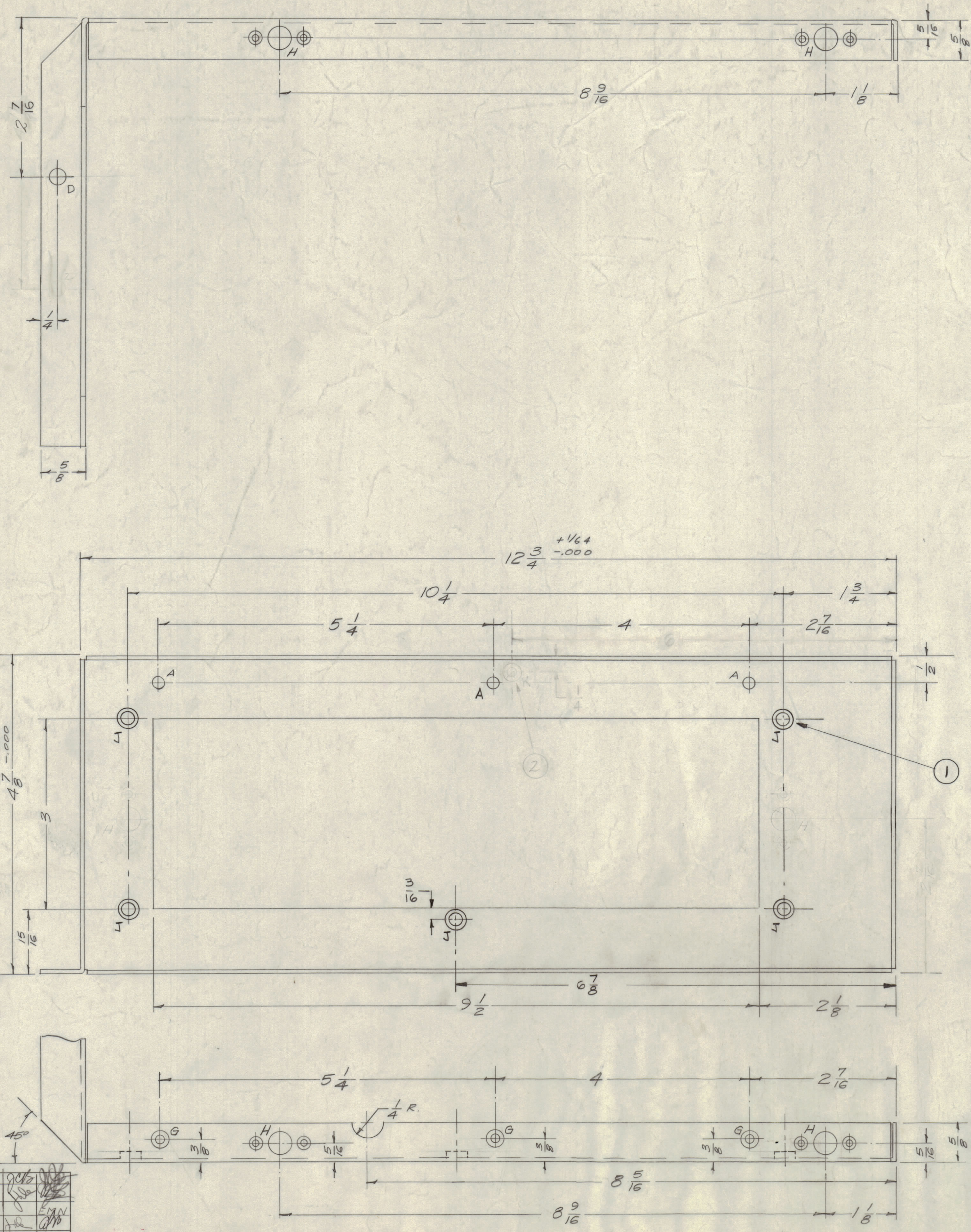
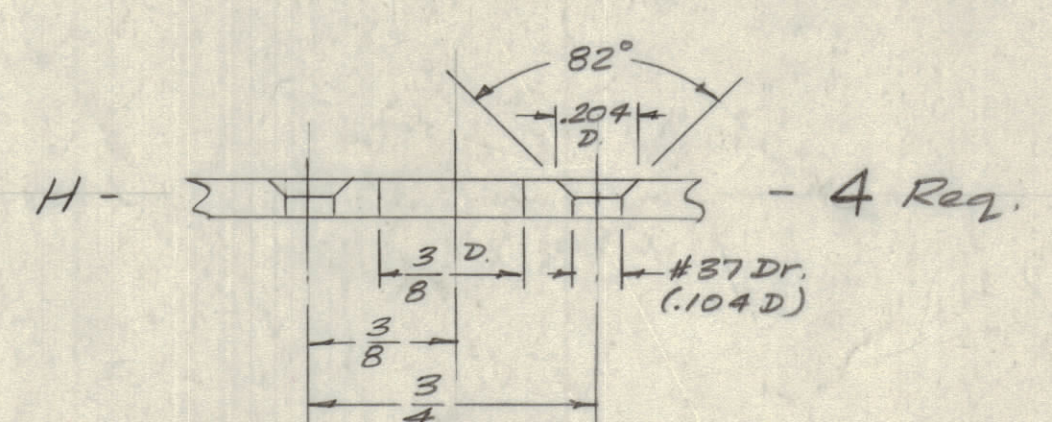
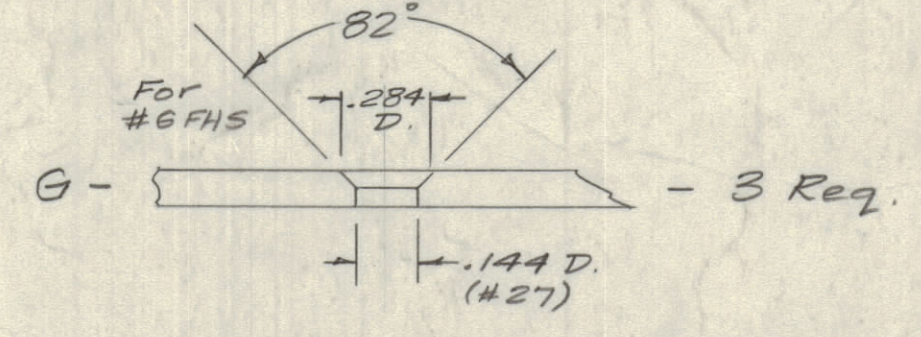
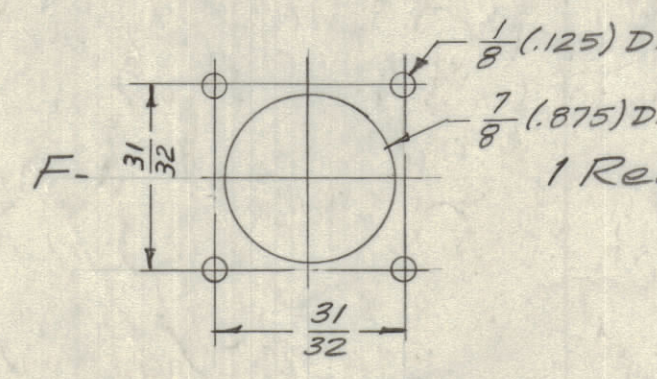
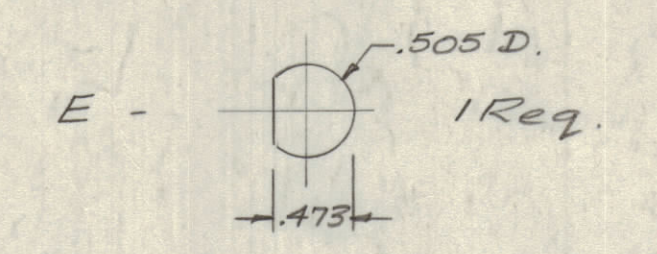


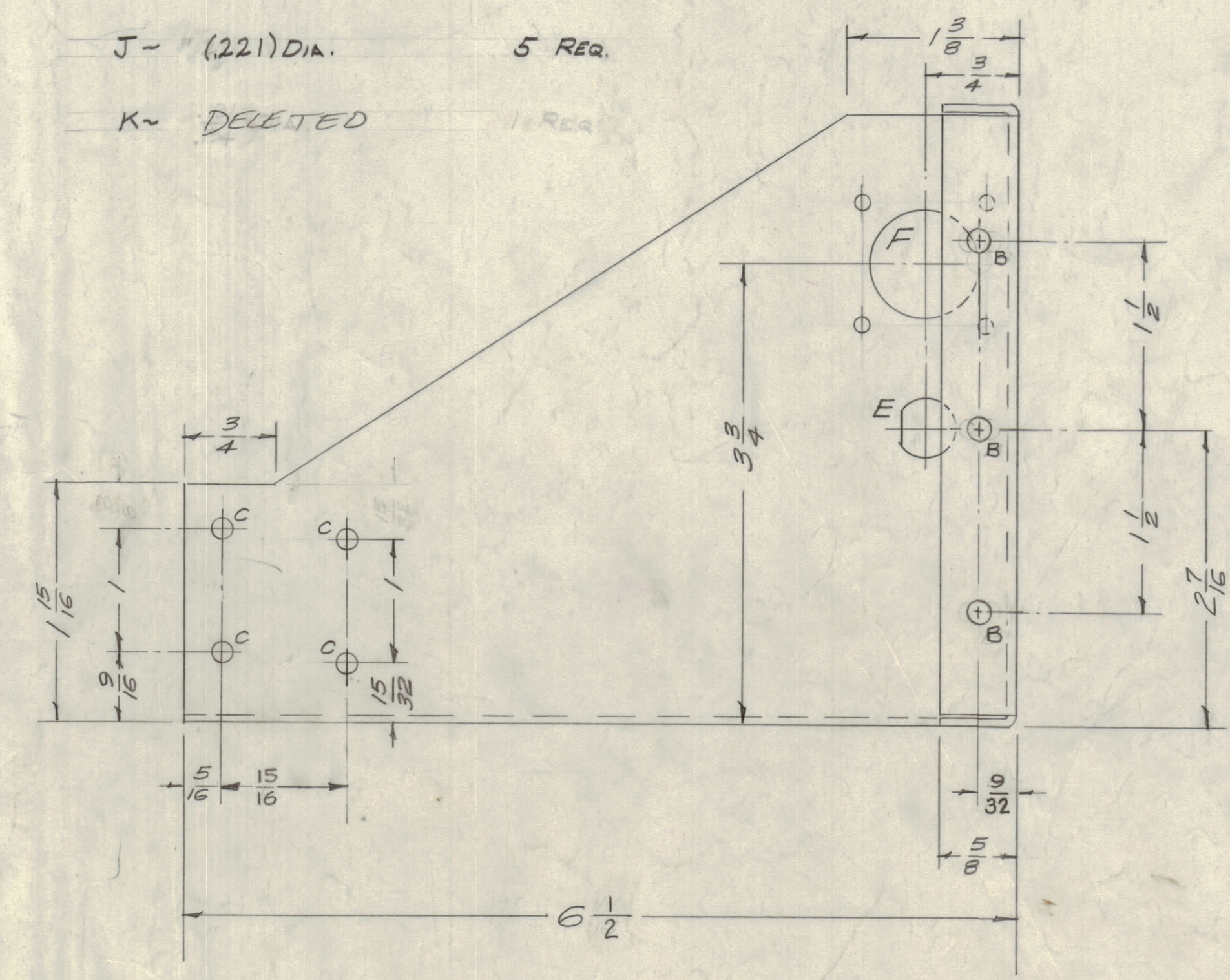
IF IT IS FOUND DESIRABLE TO CHANGE ANY TOLERANCE OR OTHER DETAIL SPECIFIED ON THIS DRAWING NOTIFY THE PURCHASER PROMPTLY.  
 MAXIMUM ALLOWABLE TOLERANCES HAVE BEEN DETERMINED AND DEVIATIONS WILL BE CAUSE FOR REJECTION. REMOVE ALL BURRS AND SHARP EDGES



- A - 13/64 (.203) D. 3 Req.
- B - 13/64 DIA. 3 Req.
- C - 11/64 (.171) D. 4 Req.
- D - 1/4 (.250) D. 1 Req.



- J - (.221) DIA. 5 Req.
- K - DELETED 1 Req.



NOTICE TO PERSONS RECEIVING THIS DRAWING

THE TECHNICAL MATERIEL CORPORATION claims proprietary right in the material disclosed herein. This drawing is issued in confidence for engineering information only and may not be reproduced or used to manufacture anything shown hereon without permission from THE TECHNICAL MATERIEL CORPORATION to the user. This drawing is loaned for mutual assistance and is subject to recall at any time.

Property of:  
 THE TECHNICAL MATERIEL CORPORATION  
 MAMARONECK, NEW YORK

D	3	Holes were 1/4 x 1/4 Slots	11-60	3877	RU		
C	1	MOUNTING HOLES FOR SLIDES ADDED	11-60	2549	MA		
B	1	5/32 DIA. HOLES WAS	11-59	1001	AB		
A	1	2 1/2 DIA. WAS	11-58	504	AB		
	1	MSR-A THIS DRAWING 10003 NEW DWG. AS PER CH 40439	11-58	153	16		

E	2	K HOLE DELETED ITEM (A) DELETED	11-60	337	DM		
---	---	---------------------------------	-------	-----	----	--	--

1	MSR-8			1-11-60
1	MSR-3A			1-11-60
1	MSR-5			1-11-60
1	MSR-4			9-2-58

5	1	NT-129-832-4	NUT, SWAGE	
REG. ITEM		PART NO.	DESCRIPTION	SYMBOL
		.064 THK.	THE TECHNICAL MATERIEL CORP.	
		ALUMINUM	MAMARONECK, NEW YORK	
		MATERIAL	WEIGHT PER PC.	
		5052-H32		
		TYPE & TEMPER	1592/58	PERK
		DRAWN	ELEC. DES. APP.	MECH. DES. APP.
		CHECKED		FINAL APPROVAL
		HEAT TREAT. SPEC.		
		FINISH & SPEC. NO.	S-404 YEL. 10111E	
				MS-1328

MS-1328