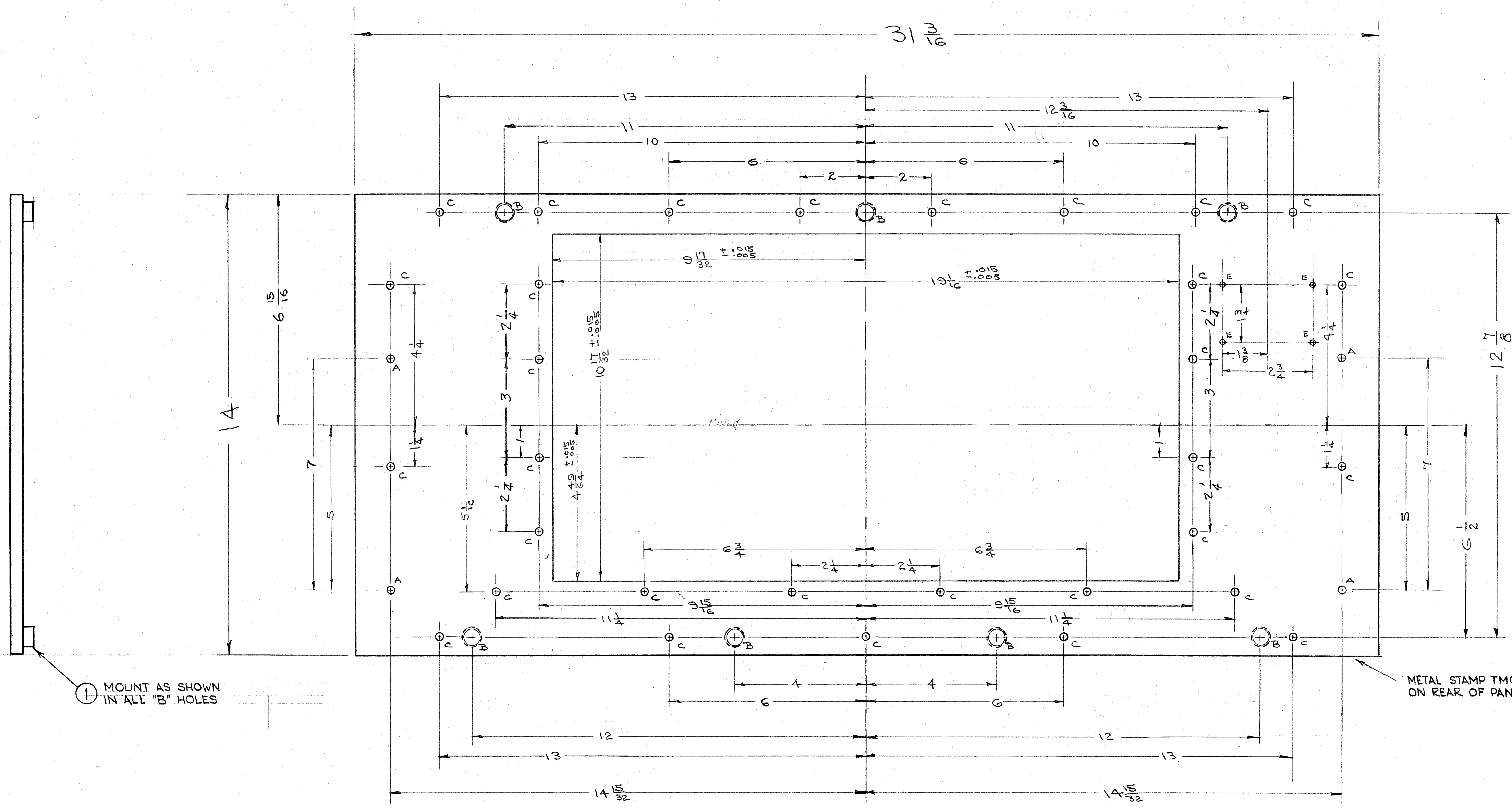


IF IT IS FOUND DESIRABLE TO CHANGE ANY TOLERANCE OR OTHER DETAIL SPECIFIED ON THIS DRAWING NOTIFY THE PURCHASER PROMPTLY.  
 MAXIMUM ALLOWABLE TOLERANCES HAVE BEEN DETERMINED AND DEVIATIONS WILL BE CAUSE FOR REJECTION. REMOVE ALL BURRS AND SHARP EDGES

NOTICE TO PERSONS RECEIVING THIS DRAWING

THE TECHNICAL MATERIEL CORPORATION claims proprietary right in the material disclosed hereon. This drawing is issued in confidence for engineering information only and may not be reproduced or used to manufacture anything shown hereon without permission from THE TECHNICAL MATERIEL CORPORATION to the user. This drawing is loaned for mutual assistance and is subject to recall at any time.

Property of:  
 THE TECHNICAL MATERIEL CORPORATION  
 MAMARONECK, NEW YORK

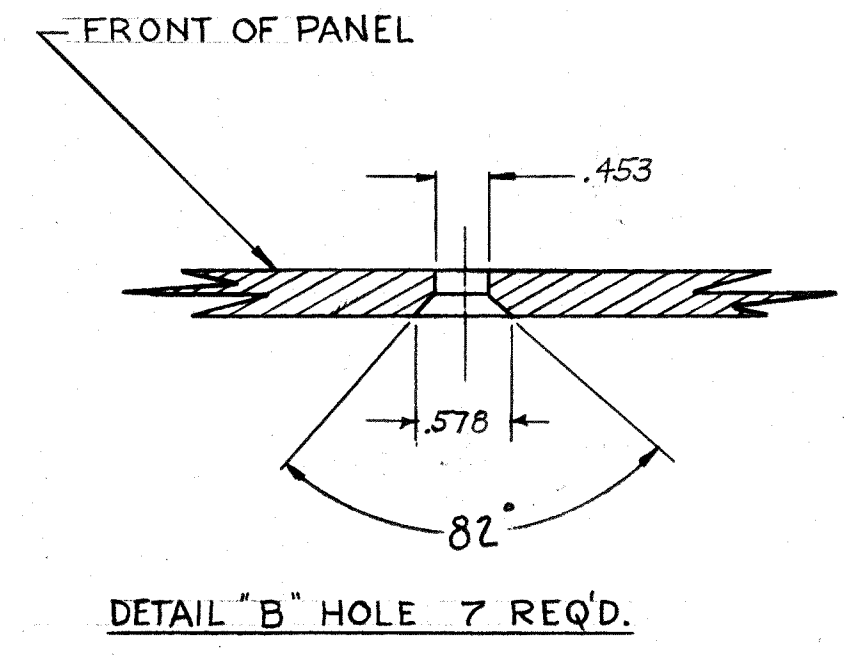


HOLE LEGEND

A - 13/64 D	4 REQ.
B - SEE DETAIL	7 REQ.
C - 15/64 D	31 REQ.
E - #47 DRILL	4 REQ.

- NOTE
- LATERAL BOW OF PANEL MUST BE KEPT TO .031 TOL.
  - HOLES MUST BE DRILLED.
  - MILL ALL EDGES.
  - PANEL MUST BE FREE OF ALL MACHINING MARKS, GOUGES, AND SCRATCHES. IF NECESSARY, SAND FRONT OF PANEL, WITH #120 GRIT SANDPAPER.

FINISH: FRONT & EDGES ONLY  
 S-404 YELLOW IRIDITE  
 S-114 ZINC CHROMATE PRIMER  
 S-115 SMOOTH GRAY ENAMEL.



7	1	NT-124							
REQ. ITEM	PART NO.	DESCRIPTION	SYMBOL						
316		ALUMINUM	MACHINING FRONT PANEL						
2020-T3		TYPE & TEMPER	DRAWN		ELEC. DES. APP.		MECH. DES. APP.		
			CHECKED		FINAL APPROVAL				
							MS-1335 C		

1	RTS-2			4-28-59
1	RTX-2	E-1041		5-12-58
REQ. PER UNIT	MODEL	PROJECT NO.	ASSY. NO.	DATE
				USED ON

REF: PM-504, PM-505, MS-1338

7	1	NT-124							
REQ. ITEM	PART NO.	DESCRIPTION	SYMBOL						
316		ALUMINUM	MACHINING FRONT PANEL						
2020-T3		TYPE & TEMPER	DRAWN		ELEC. DES. APP.		MECH. DES. APP.		
			CHECKED		FINAL APPROVAL				
							MS-1335 C		