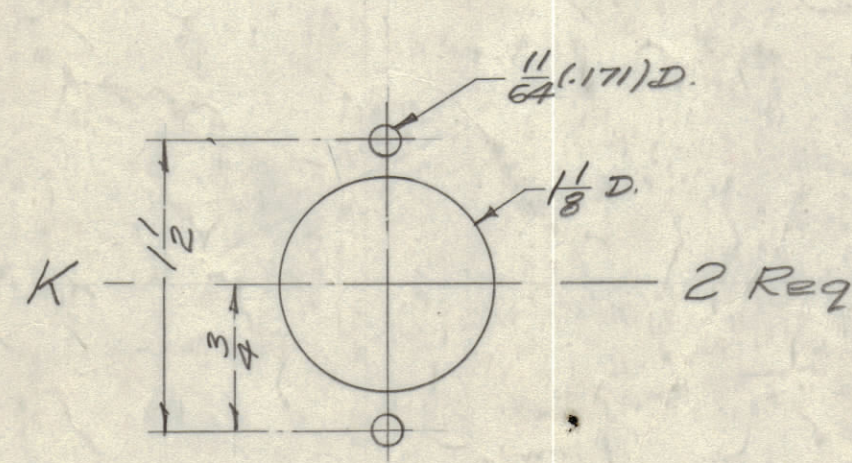
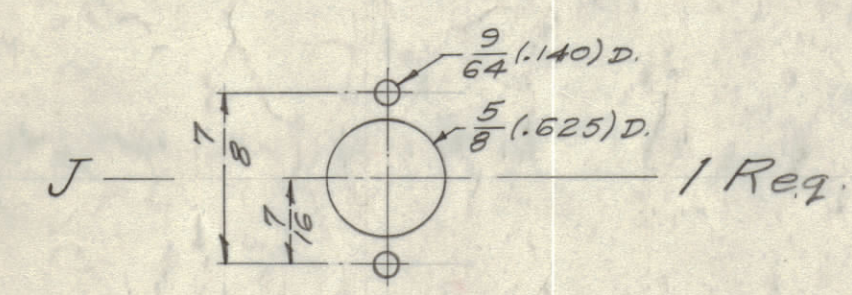
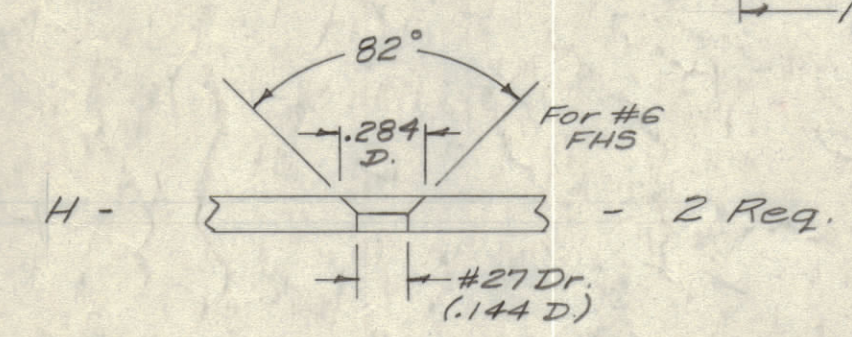
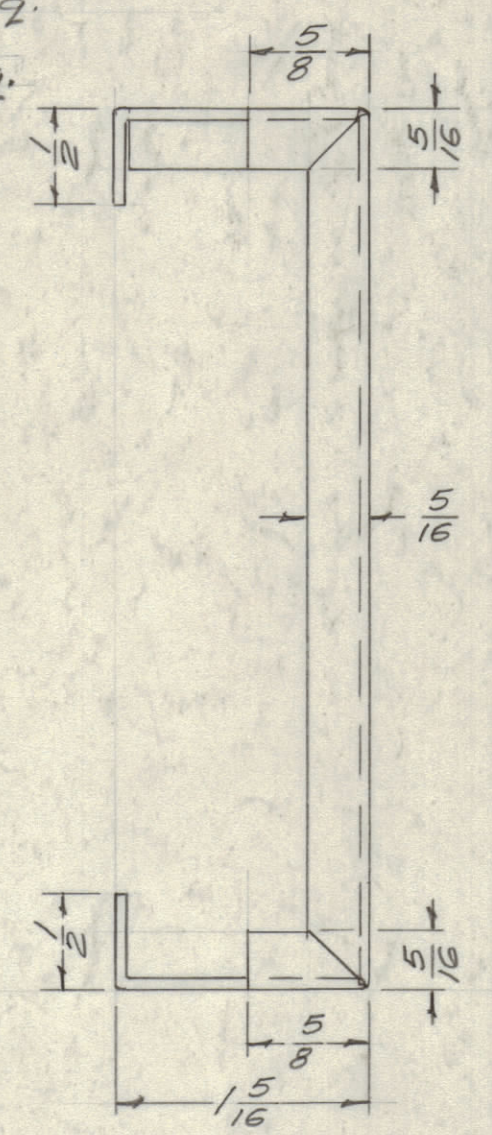


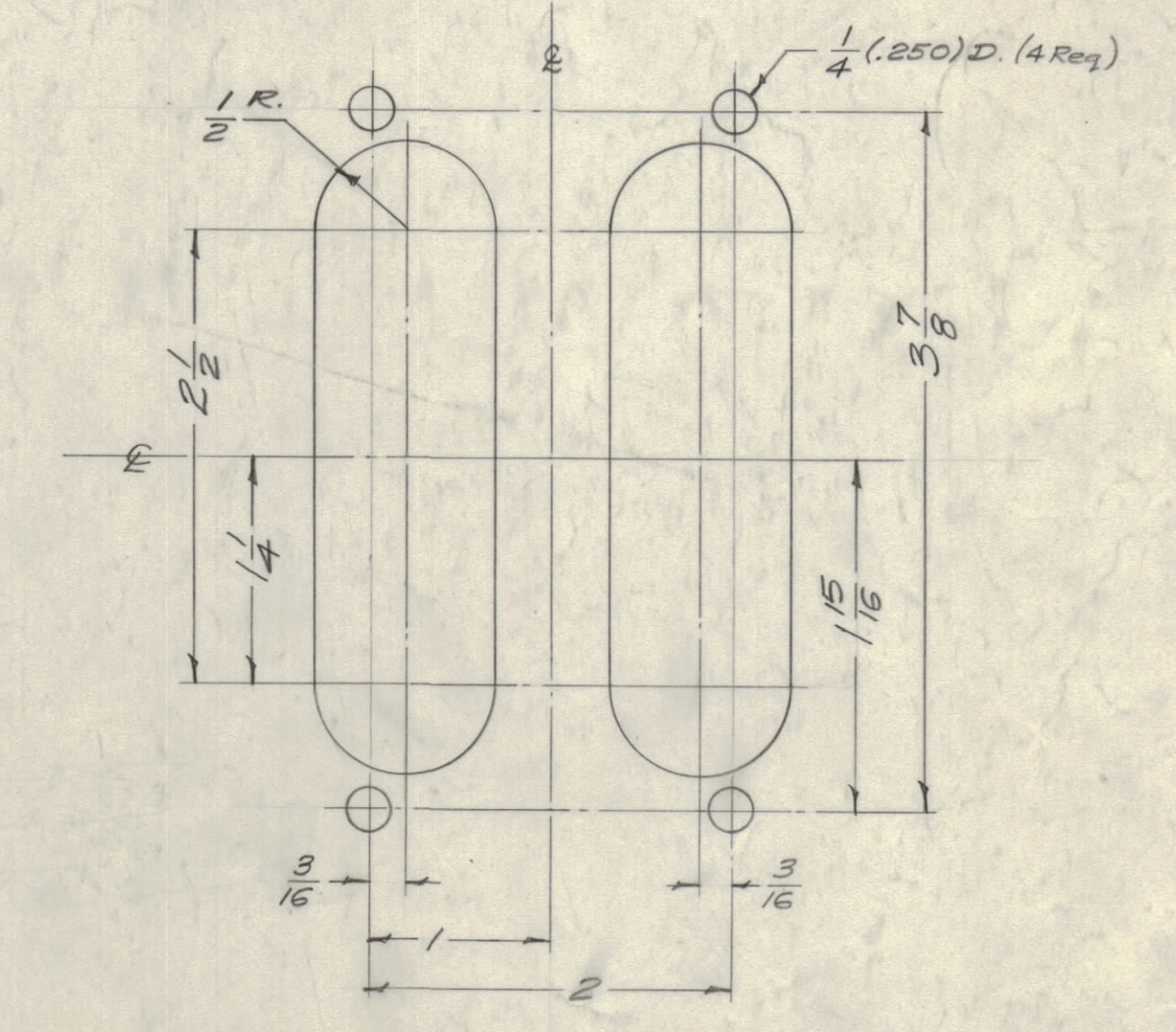
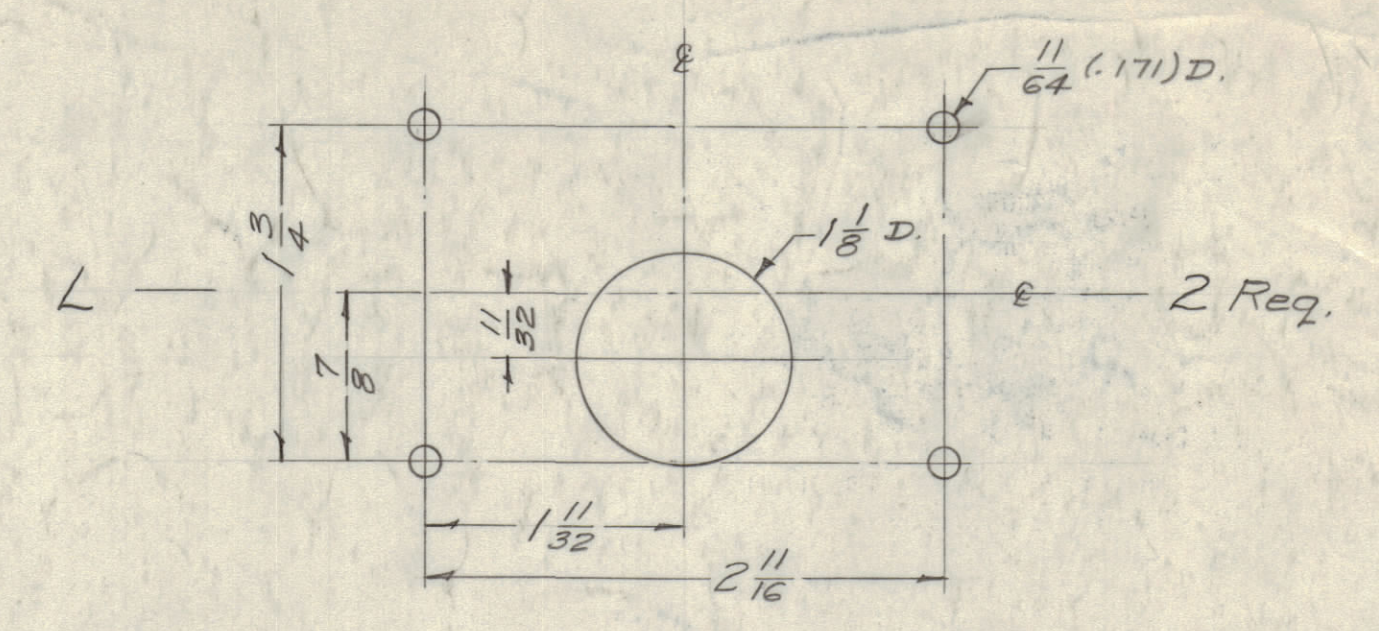
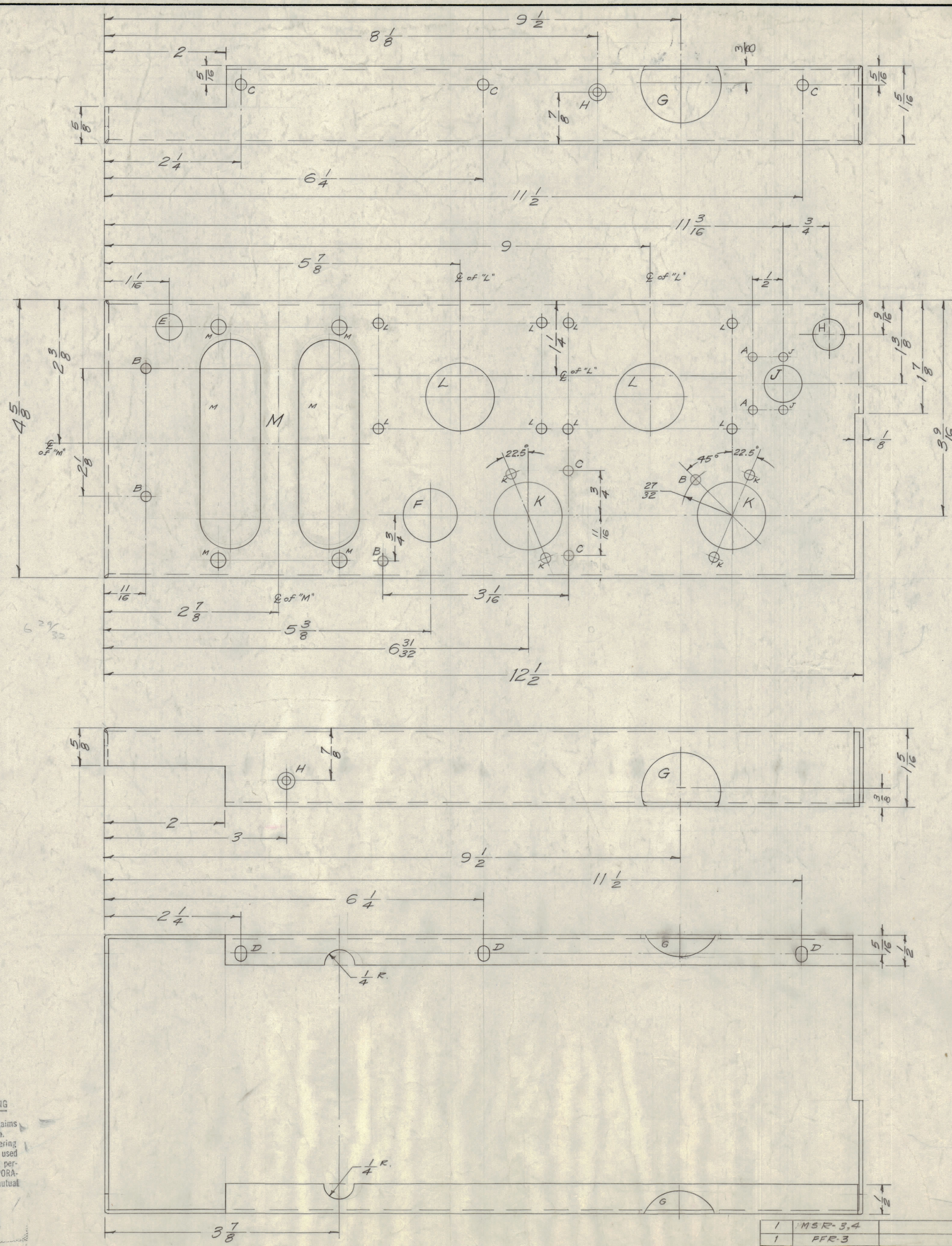
IF IT IS FOUND DESIRABLE TO CHANGE ANY TOLERANCE OR OTHER DETAIL SPECIFIED ON THIS DRAWING NOTIFY THE PURCHASER PROMPTLY.  
 MAXIMUM ALLOWABLE TOLERANCES HAVE BEEN DETERMINED AND DEVIATIONS WILL BE CAUSE FOR REJECTION. REMOVE ALL BURRS AND SHARP EDGES

- A -  $\frac{3}{64}$  (.140) D 2 Req.
- B -  $\frac{11}{64}$  (.171) D 4 Req.
- C -  $\frac{3}{16}$  (.187) D 5 Req.
- D -  $\frac{3}{16} \times \frac{1}{4}$  SLOT 3 Req.
- E -  $\frac{7}{16}$  (.437) D 1 Req.
- F -  $\frac{7}{8}$  (.875) D 1 Req.
- G -  $1 - \frac{5}{16}$  (1.312) D 2 Req.
- H -  $\frac{1}{2}$  (.500) D 1 Req.



**NOTICE TO PERSONS RECEIVING THIS DRAWING**  
 THE TECHNICAL MATERIEL CORPORATION claims proprietary right in the material disclosed herein. This drawing is issued in confidence for engineering information only and may not be reproduced or used to manufacture anything shown herein without permission from THE TECHNICAL MATERIEL CORPORATION to the user. This drawing is loaned for mutual assistance and is subject to recall at any time.  
 Property of:  
 THE TECHNICAL MATERIEL CORPORATION  
 MAMARONECK, NEW YORK

B	2	HOLE CHAMFERED HOLE MARK 2 REG. H. ADD: PICT. H. HOLE CHANGED TO "H" HOLE (1 PL.)	2-5-65	13397	92	90	90
A	1	3/8 WAS 1/4 (REF. G. HOLE)	1/21/58	496	WJC	JR	10
1	1	NEW DIMS. FOR MSR-3, 4 & FER-3 MS-176 IS FOR MSR-1 & FER-2	9/15/58	443	16	HE	10
ISSUE ITEM		CHANGED FROM	DATE	CN. NO.	DRAFTS	CHECKER	ENG. APP.
TOLERANCES		SCALE: FULL					
ALL DEC. DIM. ±		DRILL, PUNCH, COMMERCIAL STOCK					
OTHERS FRAC. DIM. ± 1/64		SIZES AND MANUFACTURERS					
		TOLERANCES ARE NOT INCLUDED.					



1	MSR-3,4			2-19-57
1	FER-3	A-1592		10-4-56
REQ PER UNIT	MODEL	PROJECT NO.	ARRY. NO.	DATE
USED ON				

REF: 4LD-449 LETTERING	MSR-4		
REF: 4LD-394 LETTERING	MSR-5		
REF: 4LD-460 LETTERING	FFR-3		
REQ. ITEM	PART NO.	DESCRIPTION	SYMBOL
.064 THK.		THE TECHNICAL MATERIEL CORP.	
STOCK SIZE		MAMARONECK, NEW YORK	
ALUMINUM	11	CHASSIS, POWER SUPPLY	
MATERIAL	WEIGHT PER PC.		
5052-H32			
TYPE & TEMPER	16 9/8/58	DR	
11		RE-DRAWN	ELCC. DES. APP. MECH. DES. APP.
HEAT TREAT. SPEC.	CHECKED		FINAL APPROVAL
SLOT COUSINIC DIP			
SLOT LSC940			
FINISH & SPEC. NO.			MS-1346 B

MS-1346 B