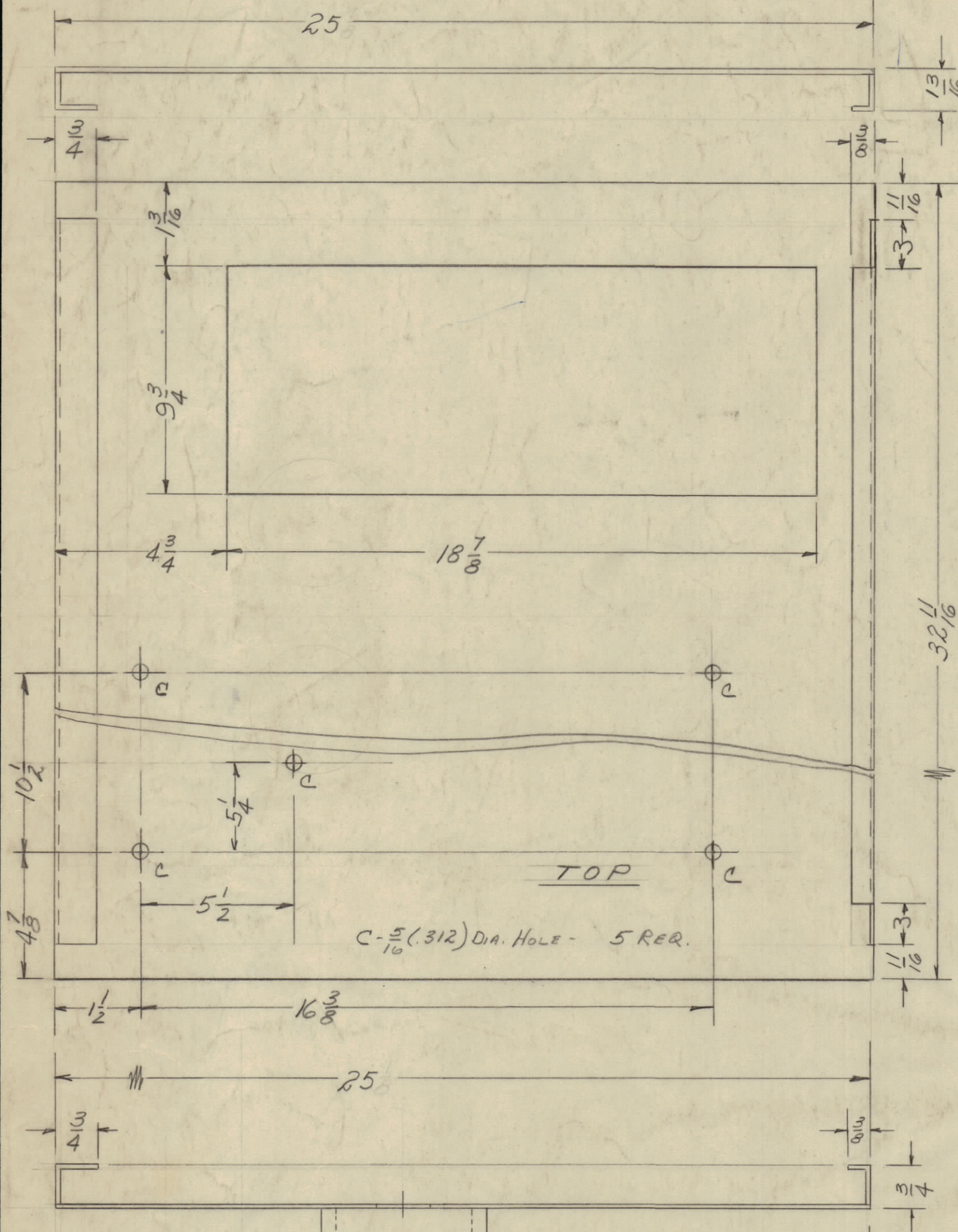
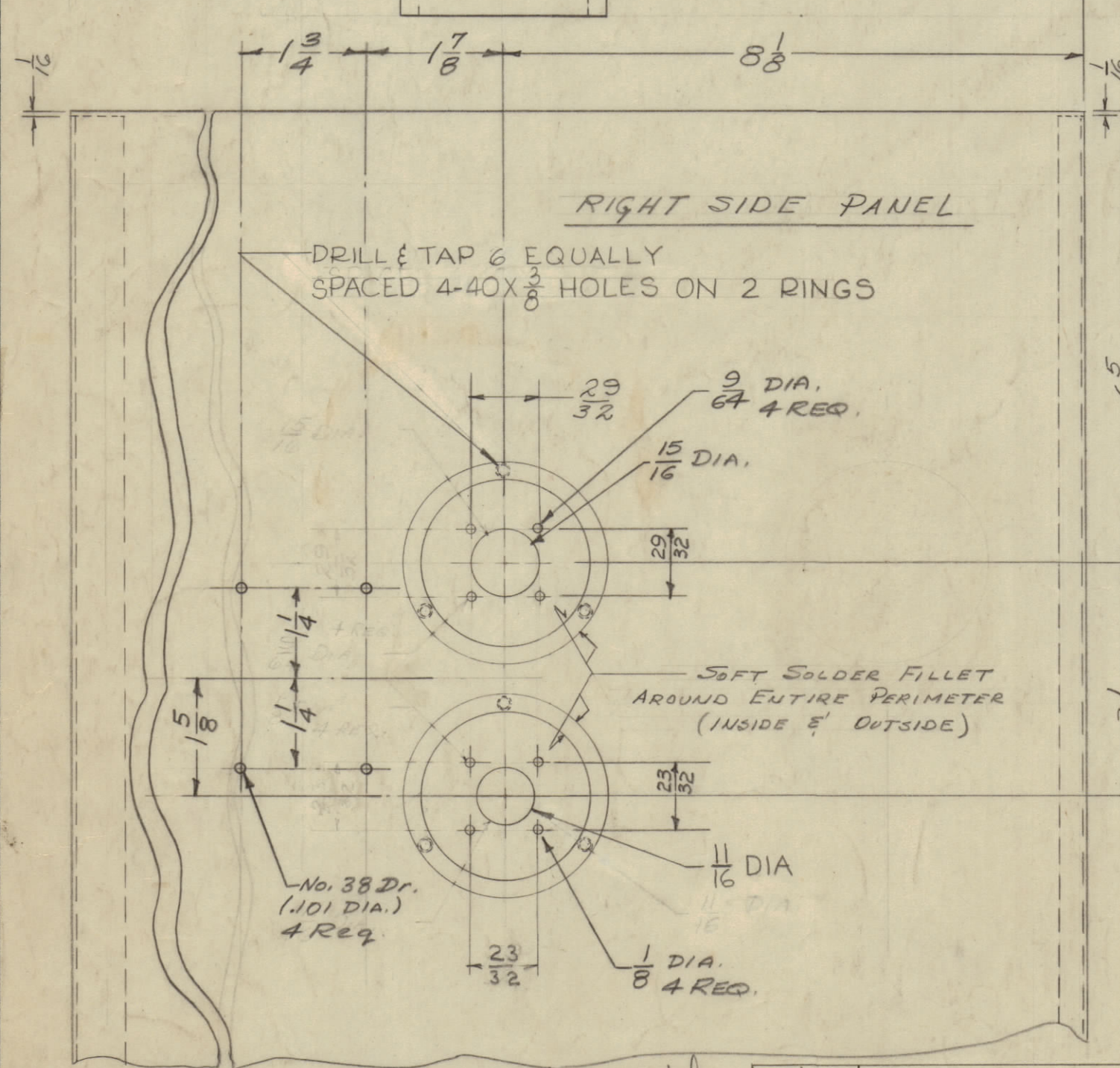
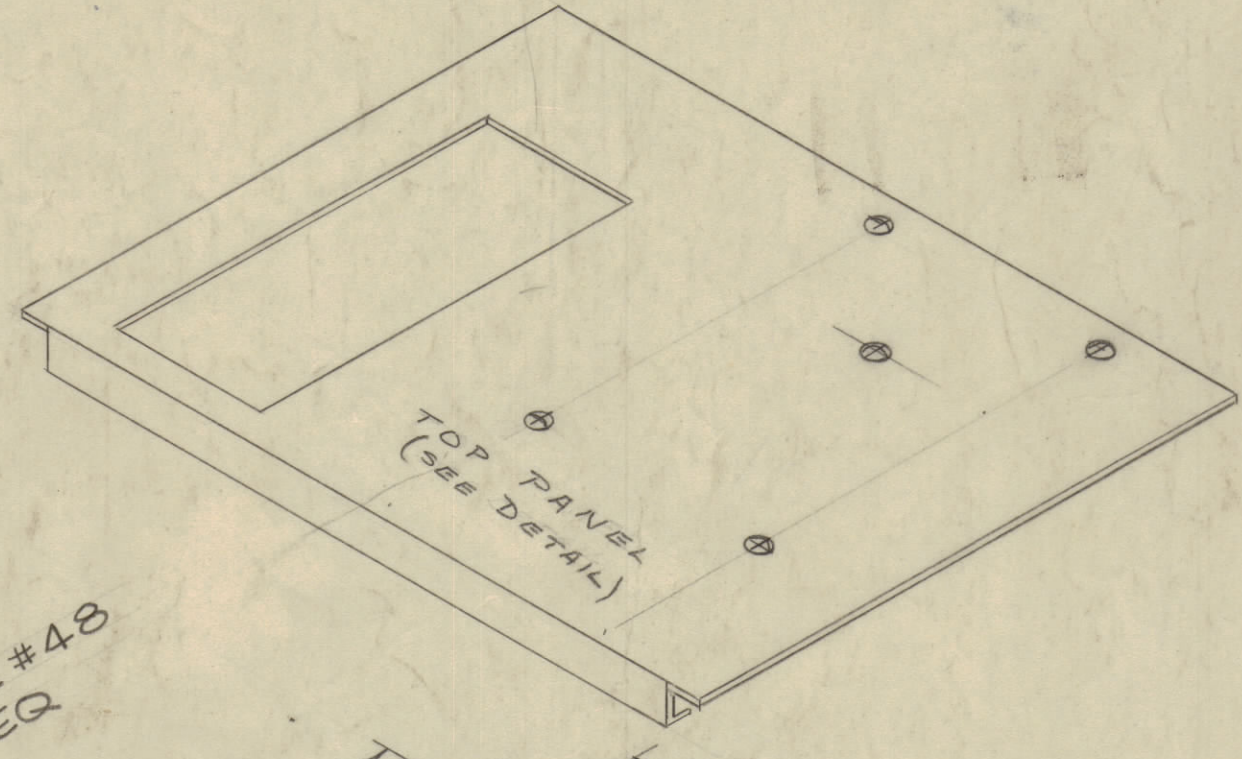
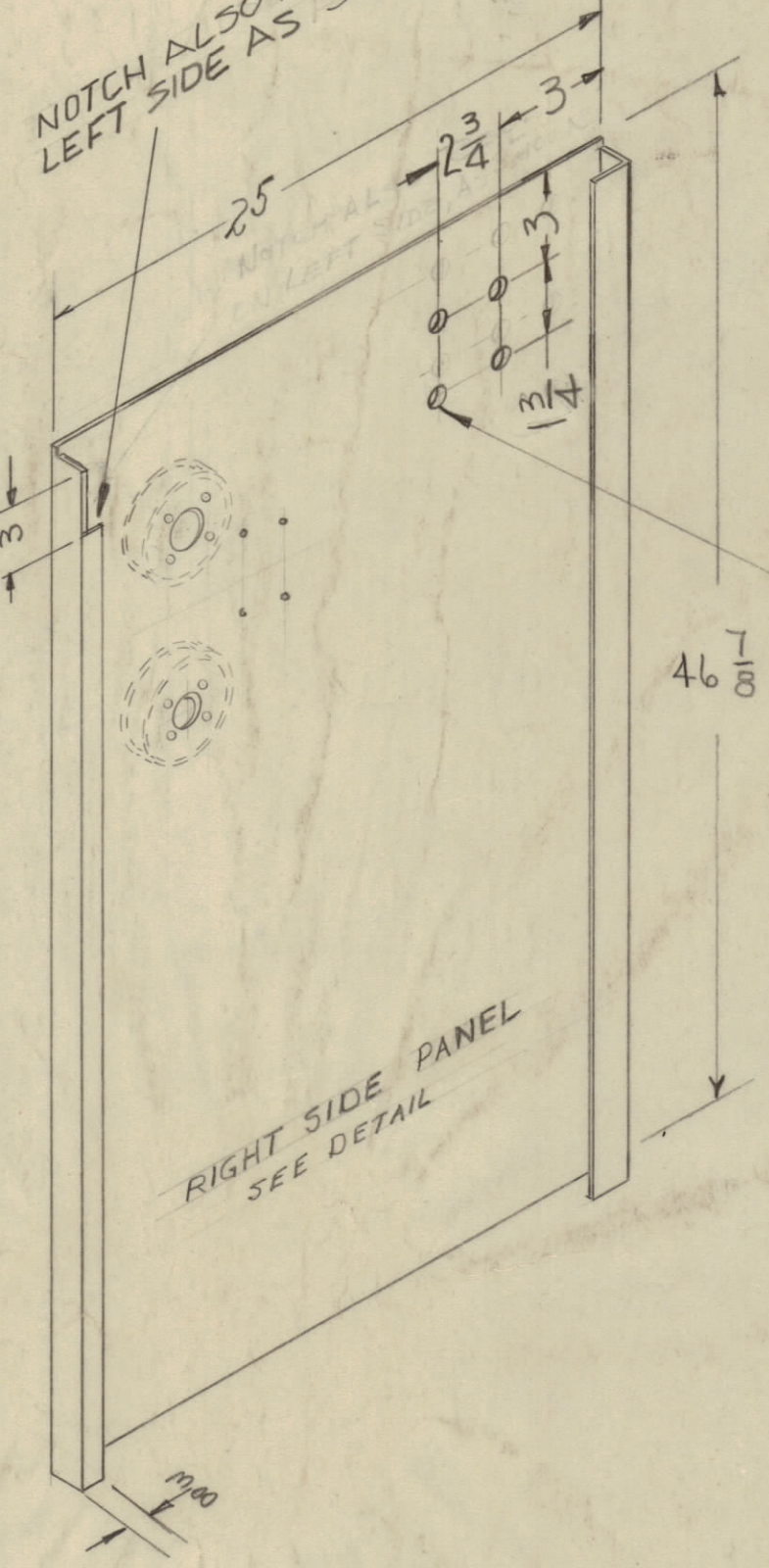


IF IT IS FOUND DESIRABLE TO CHANGE ANY TOLERANCE OR OTHER DETAIL SPECIFIED ON THIS DRAWING NOTIFY THE PURCHASER PROMPTLY.

MAXIMUM ALLOWABLE TOLERANCES HAVE BEEN DETERMINED AND DEVIATIONS WILL BE CAUSE FOR REJECTION. REMOVE ALL BURRS AND SHARP EDGES.

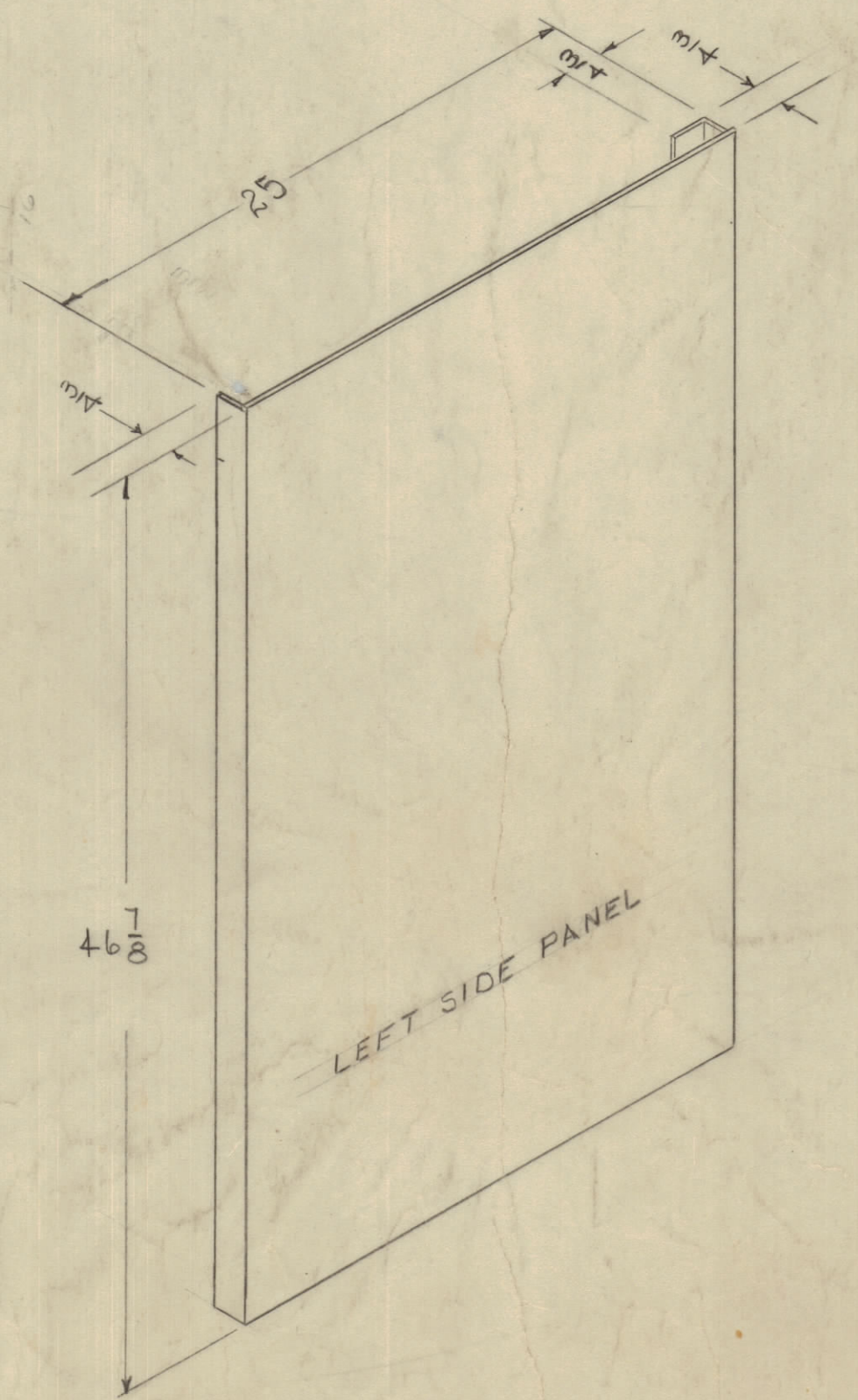
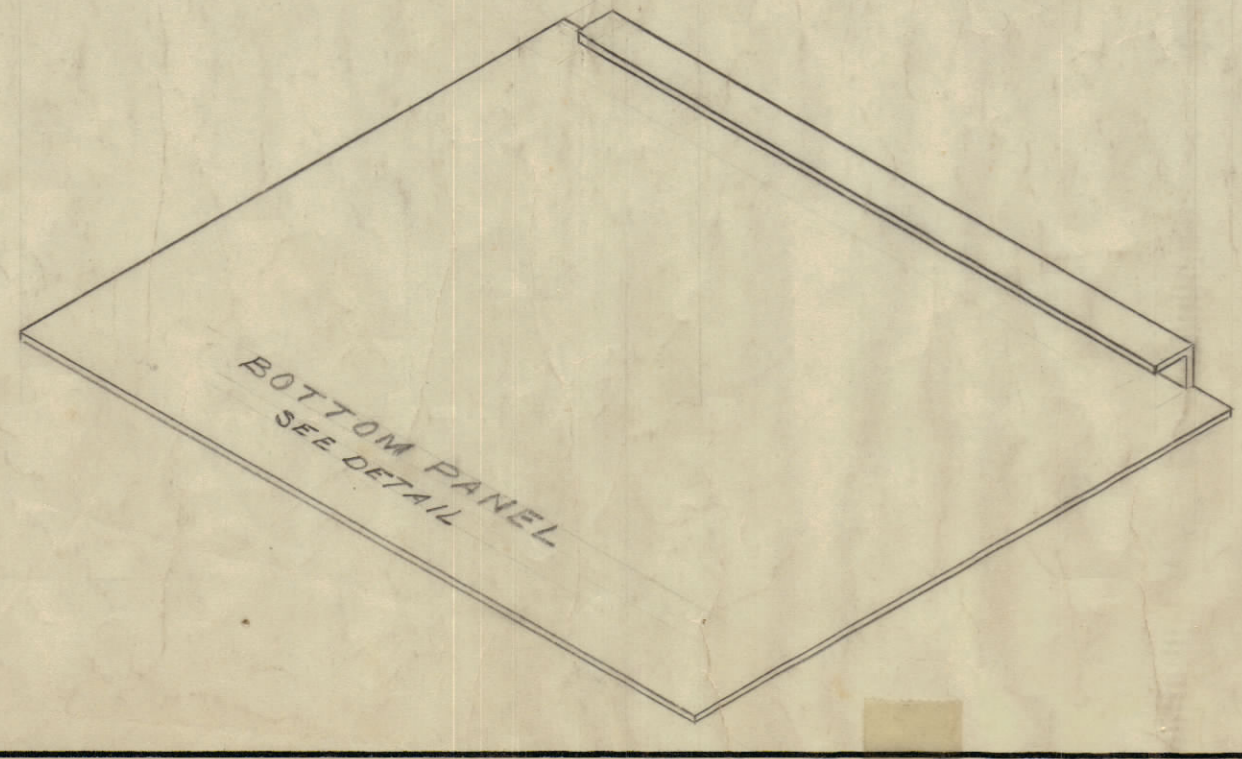
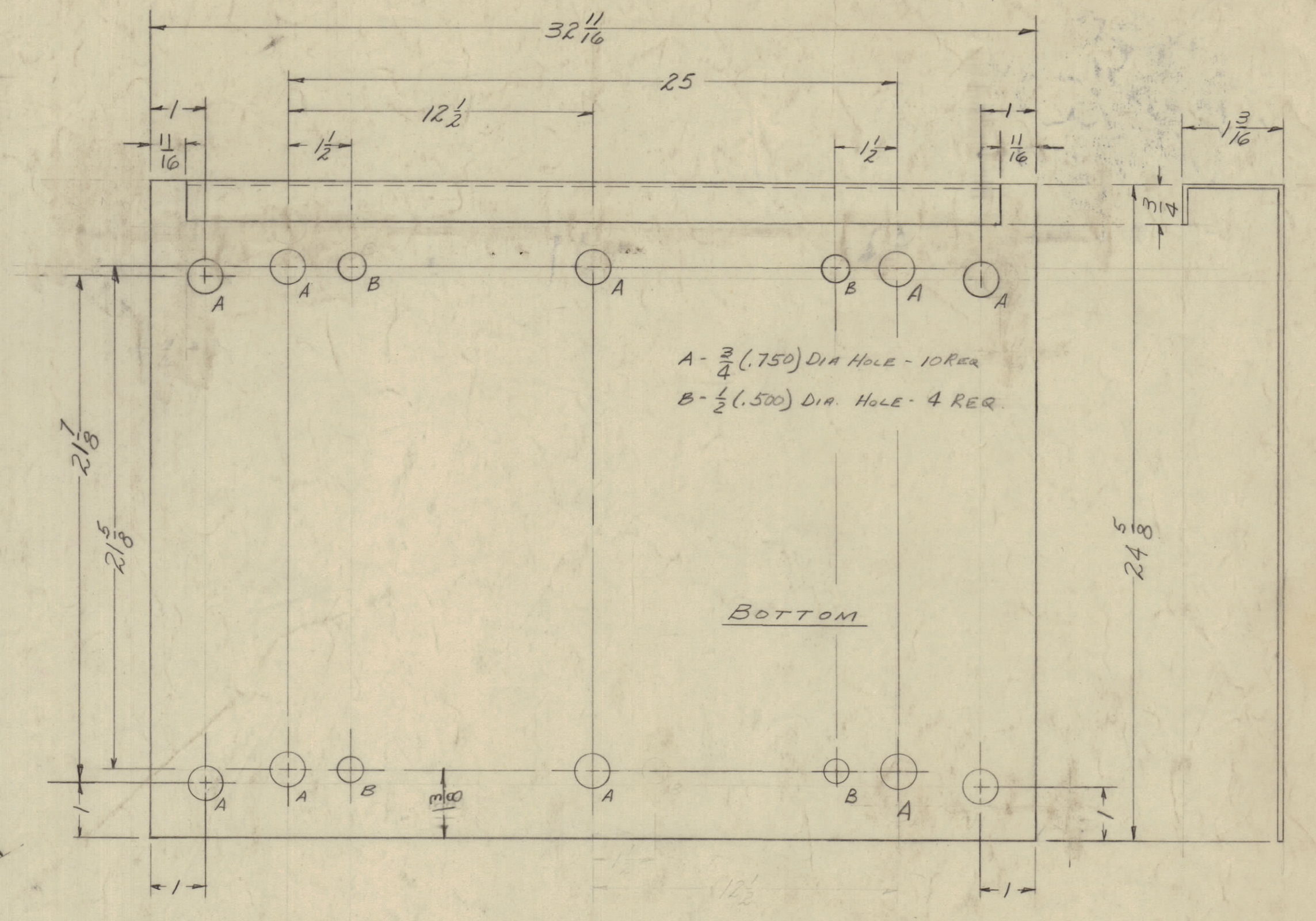
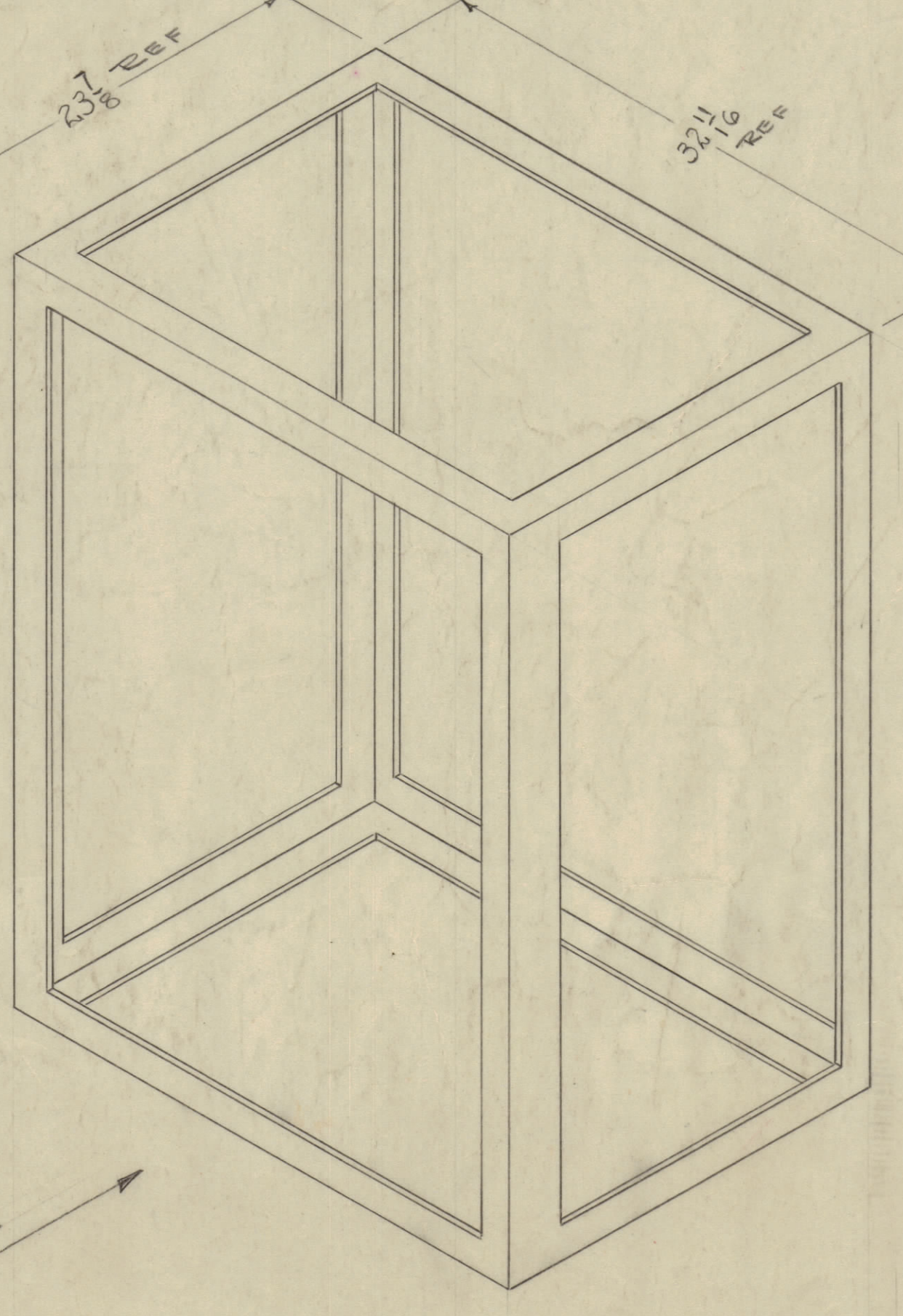


NOTCH ALSO REQ'D ON LEFT SIDE AS SHOWN



DRILL 6 HOLES THROUGH SKIN .125 DIA ON 2.687 DIA TO MATCH RINGS. USE BINDING HEAD SCREWS 1/4 LONG.

REAR OF FRAME



GENERAL NOTES:
 1- FRAME - 13G ALUM. OR STAINL. STEEL
 2- COMPARTMENT - 13G ALUM. OR STAINL. STEEL
 3- SHIELD - 1/8" (MAX.) GALV. PAPER OR 1/8" (MAX.) GALV. PAPER
 4- INTERNAL TO BE FREE OF ALL SURFACE IMPURITIES
 5- FINISH TO BE SMOOTH
 6- SURFACE TO BE CLEAN
 7- SQUARE OF LAG BOLT TO BE WITHIN .05"

NOTICE TO PERSONS RECEIVING THIS DRAWING
 THE TECHNICAL MATERIEL CORPORATION claims proprietary right in the material disclosed hereon. This drawing is issued in confidence for engineering information only and may not be reproduced or used to manufacture anything shown hereon without permission from THE TECHNICAL MATERIEL CORPORATION to the user. This drawing is loaned for mutual assistance and is subject to recall at any time.
 Property of:
 THE TECHNICAL MATERIEL CORPORATION
 MAMARONECK, NEW YORK

C	1	SWITCH Added	11/15/58	J	[Signature]
B	1	BOTTOM PLATE DIM. Clarified	11/15/58	J	[Signature]
A	1	ADDED 5° HOLES	10/15/58	J	[Signature]
ISSUE	ITEM	CHANGED FROM	DATE	DN. NO. DRAFTS	CHECKER
TOLERANCES		SCALE: 1/8"			
ALL DEC. DIM. ± OTHERS FRACTIONAL DIM. ± ANGULAR DIM. ±	DRILL, PUNCH, COMMERCIAL STOCK SIZES AND MANUFACTURERS TOLERANCES ARE NOT INCLUDED.				

K	1	SEE SHT. 7	6/27/58	J	[Signature]
J	+	6 4-40 X 3/8 HOLES TAPPED ON RINGS	3-9-56	J	[Signature]
H	1	SEE SHEET 11 OF 12	2-15-53	J	[Signature]
G	1	Right Side Panel # 48 Dr. Holes Added	11-16-51	J	[Signature]
F	+	Revision Letter Clarified	1/21/51	J	[Signature]
D	1	Four No 38 Drill Holes Added to Right Side Panel	12/18/49	J	[Signature]
ISS. ITEM	REVISION	DATE	DN. NO.	DRAFT	CHEK'R.

1	CAB-7	PROJECT NO.	ASS'Y. NO.	10-10-58
REQ PER UNIT	MODEL	PROJECT NO.	ASS'Y. NO.	DATE
		USED ON		

REQ. ITEM	PART NO.	DESCRIPTION	SYMBOL
SEE 5-396		THE TECHNICAL MATERIEL CORP. MAMARONECK, NEW YORK	
STOCK SIZE		CABINET	
MATERIAL	WEIGHT PER PC.		
TYPE & TEMPER	10-10-58 AW	[Signature]	[Signature]
HEAT TREAT. SPEC.	CHECKED	FINAL APPROVAL	
SEE 5-396		SHEET 1 OF 12 MS-1360 K	
FINISH & SPEC. NO.	MAMARONECK, NEW YORK		