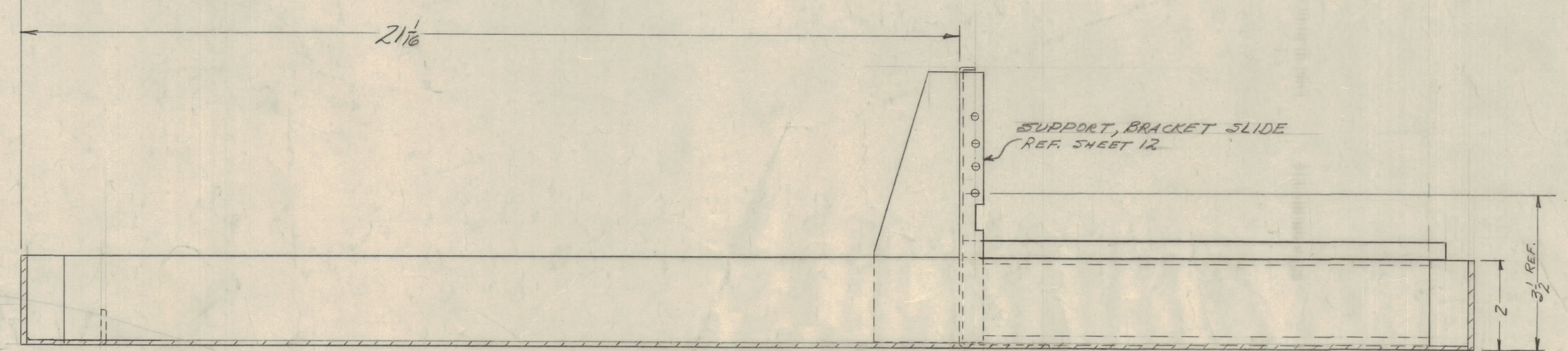
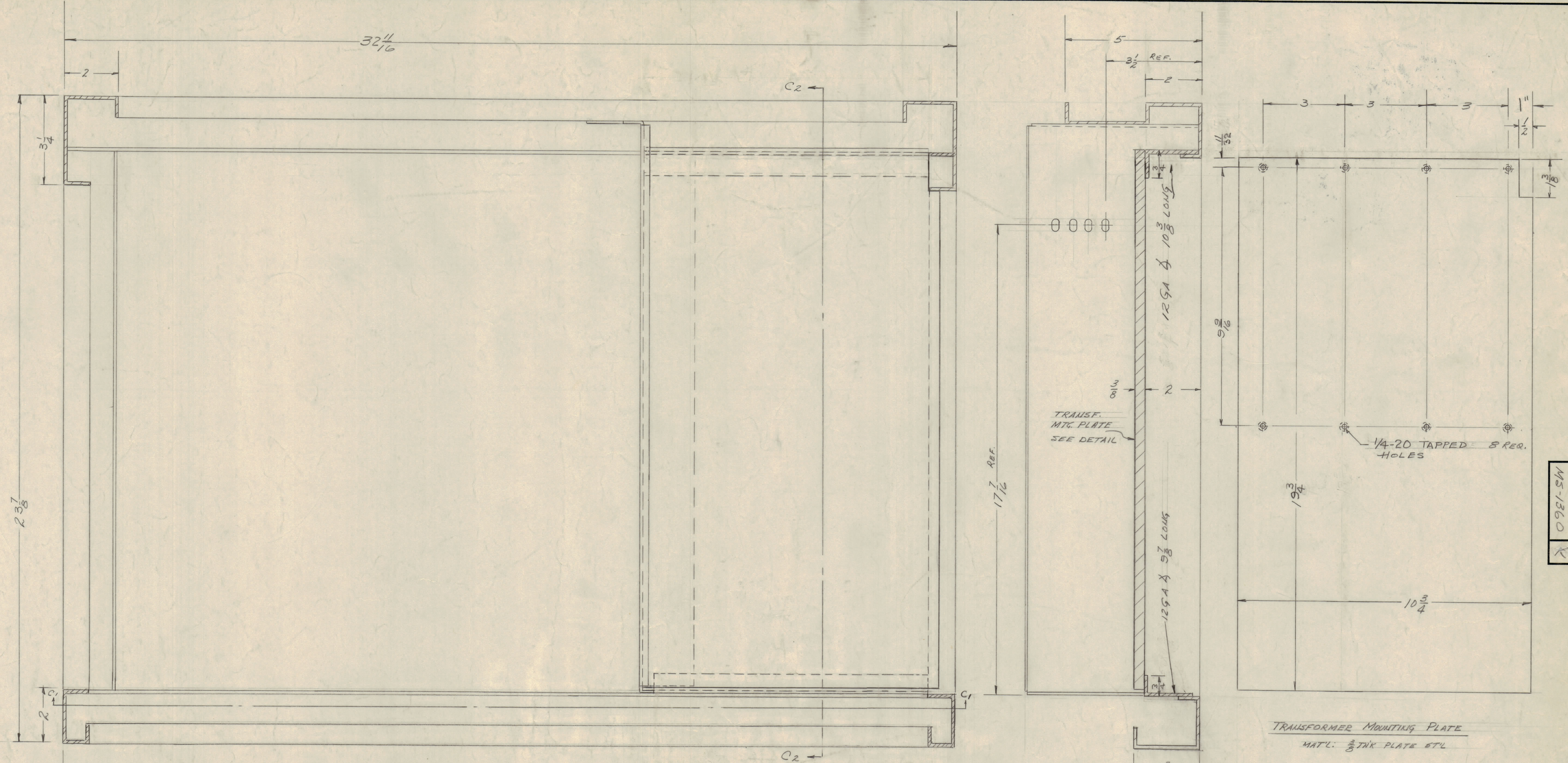


IF IT IS FOUND DESIRABLE TO CHANGE ANY TOLERANCE OR OTHER DETAIL SPECIFIED ON THIS DRAWING NOTIFY THE PURCHASER PROMPTLY.
 MAXIMUM ALLOWABLE TOLERANCES HAVE BEEN DETERMINED AND DEVIATIONS WILL BE CAUSE FOR REJECTION. REMOVE ALL BURRS AND SHARP EDGES.

NOTICE TO PERSONS RECEIVING THIS DRAWING

THE TECHNICAL MATERIEL CORPORATION claims proprietary right in the material disclosed herein. This drawing is issued in confidence for engineering information only and may not be reproduced or used to manufacture anything shown hereon without permission from THE TECHNICAL MATERIEL CORPORATION to the user. This drawing is loaned for mutual assistance and is subject to recall at any time.

Property of:
 THE TECHNICAL MATERIEL CORPORATION
 MAMARONECK, NEW YORK



ISSUE	ITEM	CHANGED FROM	DATE	CN. NO.	DRAFTS	CHECKER	ENG. APP.
K	SEE SHT. 7		6/27/58	2070	CE		
J	SEE SHEET 1 OF 12		3-9-66	15893	WHD		
H	ON TRANS. MTG. PLATE DIM 1" WAS 7/8		2-15-63	8242			
G	SEE SHEET 12 & 1		11-16-64	5807			
F	Revision Letter Clarified		7/16/61	4019			
D	2 1/2 WAS 2 1/8						
C	1/4-20 TAPPED HOLES WERE 3/16 (8 REQS)		12/1/58		CIG		
B	2 3/4 X 2 3/8 WAS 2 3/8 X 1 3/4		11/18/58				
A	1 TRANS. MTG. PLATE DIM 18 1/8 WAS 15 3/4 C/D PER INST. 0143		7/4/58				

TRANSFORMER MOUNTING PLATE
 MAT'L: 3/8" THK PLATE STL

REQ. ITEM	PART NO.	DESCRIPTION	SYMBOL
1	CAB-7	THE TECHNICAL MATERIEL CORP. MAMARONECK, NEW YORK	
SEE 5-396		CABINET	
STOCK SIZE		SECTION C-C	
MATERIAL		10-18-58	
WEIGHT PER PC.		DRAWN	
TYPE & TEMPER		ELEC. DES. APP.	
HEAT TREAT. SPEC.		MECH. DES. APP.	
FINISH & SPEC. NO.		CHECKED	
		FINAL APPROVAL	

REQ. PER UNIT	MODEL	PROJECT NO.	ASSY. NO.	DATE
1	CAB-7			10-13-58