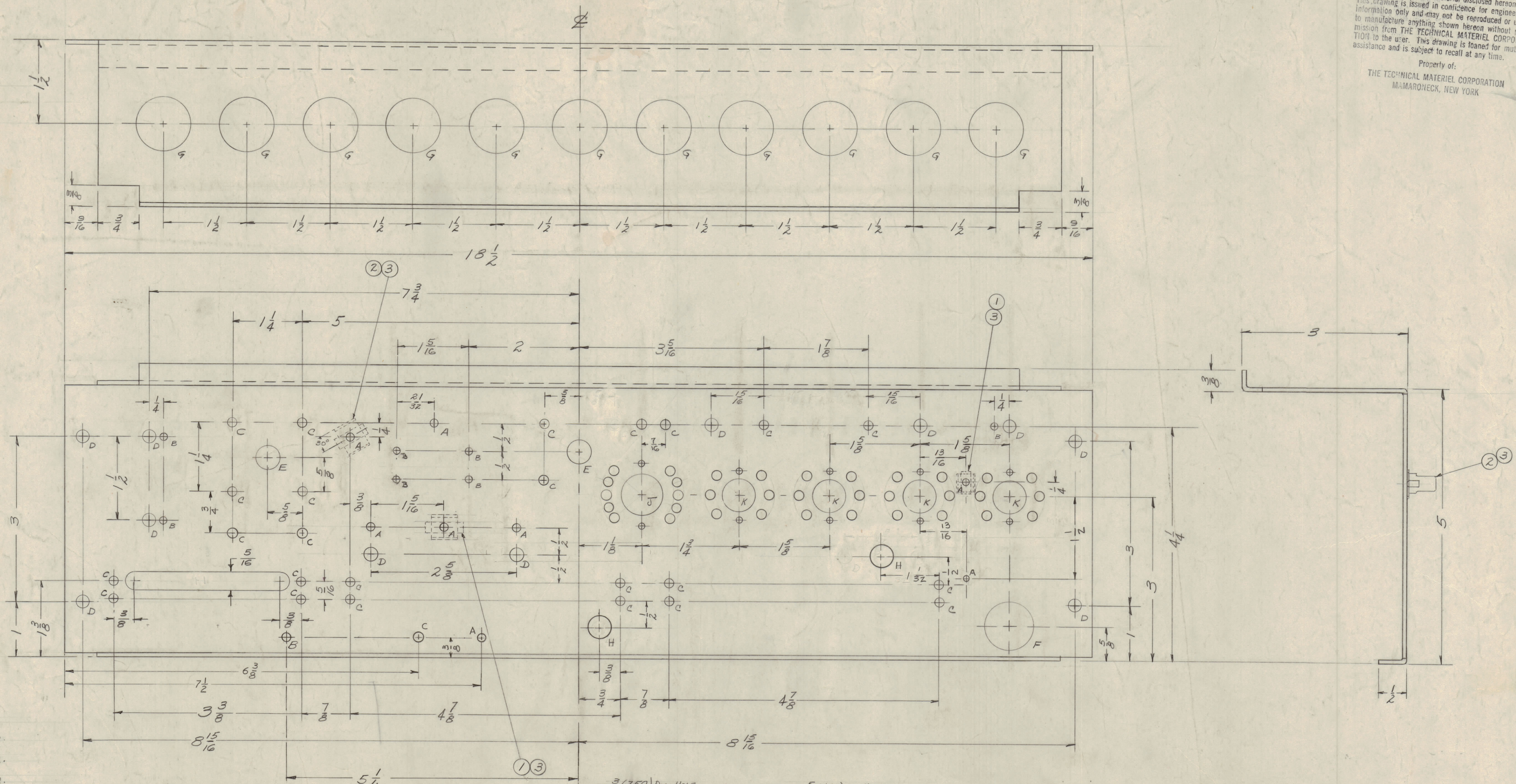
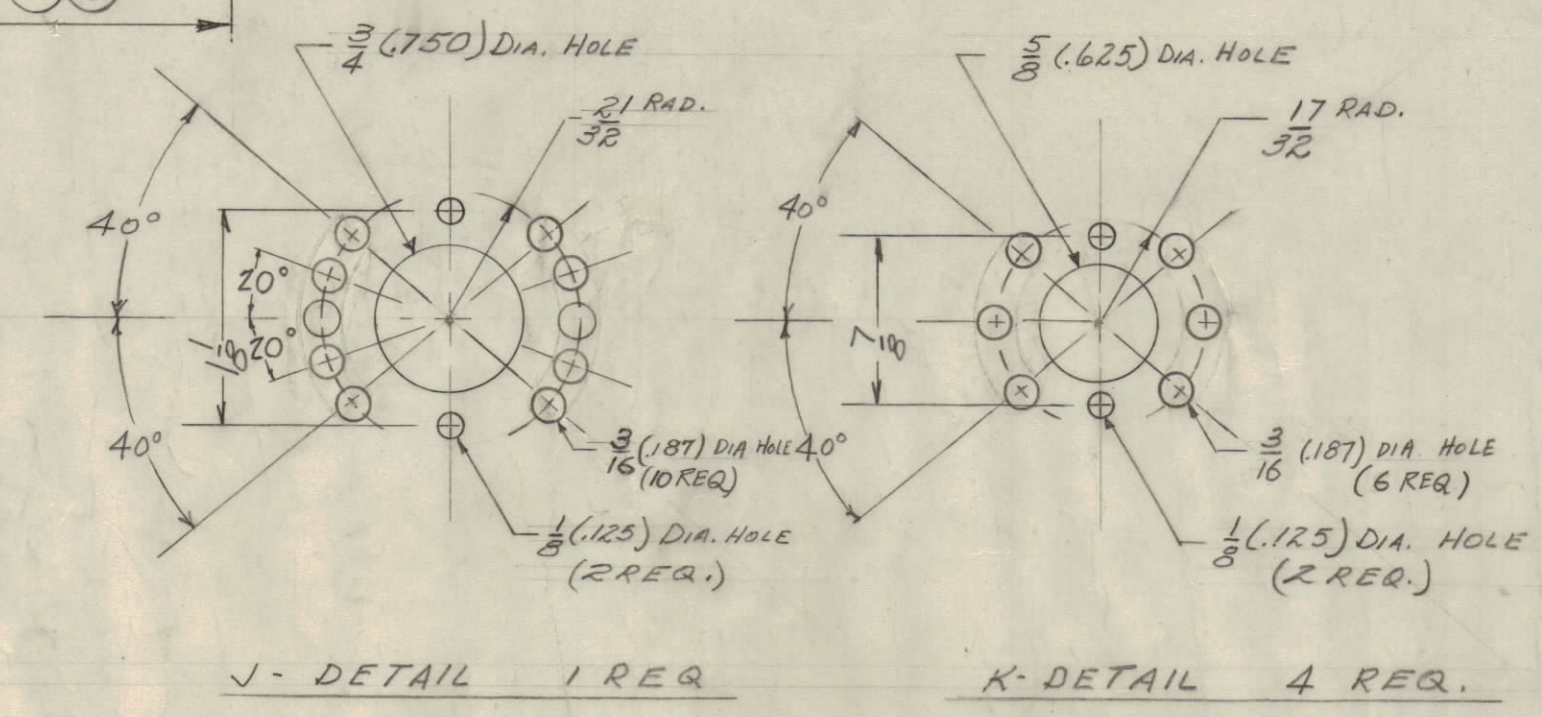


IF IT IS FOUND DESIRABLE TO CHANGE ANY TOLERANCE OR OTHER DETAIL SPECIFIED ON THIS DRAWING NOTIFY THE PURCHASER PROMPTLY.  
 MAXIMUM ALLOWABLE TOLERANCES HAVE BEEN DETERMINED AND DEVIATIONS WILL BE CAUSE FOR REJECTION. REMOVE ALL BURRS AND SHARP EDGES

**NOTICE TO PERSONS RECEIVING THIS DRAWING**  
 THE TECHNICAL MATERIEL CORPORATION claims Proprietary Right in the material disclosed hereon. This drawing is issued in confidence for engineering information only and may not be reproduced or used to manufacture anything shown hereon without permission from THE TECHNICAL MATERIEL CORPORATION to the user. This drawing is loaned for mutual assistance and is subject to recall at any time.  
 Property of:  
 THE TECHNICAL MATERIEL CORPORATION  
 MAMARONECK, NEW YORK



- HOLE LEGEND**
- A -  $\frac{1}{8}$  (.125) DIA. HOLE 9 REQ.
  - B -  $\frac{3}{32}$  (.156) DIA. HOLE 8 REQ.
  - C -  $\frac{1}{16}$  (.171) DIA. HOLE 23 REQ.
  - D -  $\frac{1}{4}$  (.250) DIA. HOLE 11 REQ.
  - E -  $\frac{5}{16}$  (.625) DIA. HOLE 2 REQ.
  - F -  $\frac{7}{8}$  (.875) DIA. HOLE 1 REQ.
  - G - 1" (1.000) DIA. HOLE 11 REQ.
  - H -  $\frac{3}{8}$  (.375) DIA. HOLE 2 REQ.



ISSUE	ITEM	CHANGED FROM	DATE	CN. NO.	DRAFTS	CHECKER	ENG. APP.
F	1	ADD ONE 'B' HOLE	6-28-59	20764	CE	JK	JK
E	2	ONE 'A' HOLE ADDED	8-3-61	5376	G.D.L.	JK	JK
D	1	THREE 'C' HOLES ADDED					
D	1	S-404 YEL. IRIDITE WAS S-101 CAUSING DIE	11/1/59	1001	MB		EMN
C	2	TWO 'C' HOLES WERE TAPED	12/1/58	541	HQ		
C	1	ONE 'C' HOLE RELOCATED					
B	2	J & K DETAILS REVISED	11/1/58	513	JB		
B	1	TWO 'H' HOLES ADDED	11/1/58				
A	1	ADDED LIST OF MAT'L					
A	2	3 HOLES WERE (1)	11/1/59	506	MC		
A	3	2 HOLES WERE (2)					

MS-1362  
 1

Ref-LD-463

REQ. ITEM	PART NO.	DESCRIPTION	SYMBOL
3	3	EY-100-1	RIVET, TUBULAR
1	2	FC-100-7	CLIP, SMALL
2	1	FC-100-6	CLIP, LARGE

.081 THICK  
 STOCK SIZE  
 ALUMINUM C70  
 MATERIAL WEIGHT PER FC.  
 5052 H-32  
 TYPE & TEMPER  
 C70  
 HEAT TREAT SPEC.  
 S-404 YEL. IRIDITE  
 FINISH & SPEC. NO.

THE TECHNICAL MATERIEL CORP.  
 MAMARONECK, NEW YORK  
 CHASSIS REGULATOR  
 RTP-2  
 10-17-59  
 DRAWN  
 ELEC. DES. APP.  
 MECH. DES. APP.  
 CHECKED  
 FINAL APPROVAL  
 MS-1362 F

REQ. PER UNIT	MODEL	PROJECT NO.	ASSY. NO.	DATE
1	RTP-2			10-17-59

USED ON