

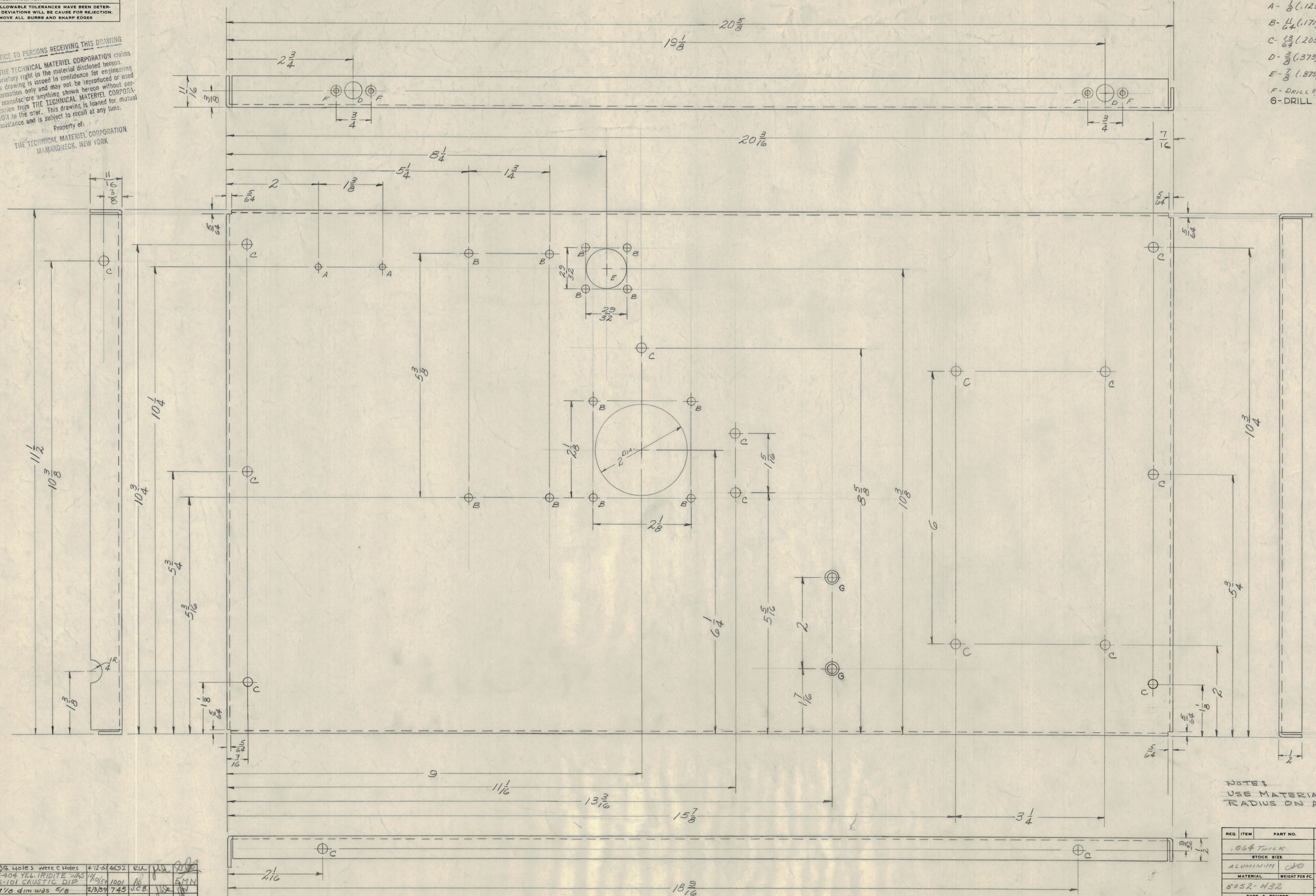
IF IT IS FOUND DESIRABLE TO CHANGE ANY TOLERANCE OR OTHER DETAIL, SPECIFIED ON THIS DRAWING NOTIFY THE PURCHASER PROMPTLY.
 MAXIMUM ALLOWABLE TOLERANCES HAVE BEEN DETERMINED AND DEVIATIONS WILL BE CAUSE FOR REJECTION. REMOVE ALL BURRS AND SHARP EDGES

NOTICE TO PERSONS RECEIVING THIS DRAWING

THE TECHNICAL MATERIEL CORPORATION claims proprietary right in the material disclosed herein. This drawing is issued in confidence for engineering information only and may not be reproduced or used to manufacture anything shown herein without permission from THE TECHNICAL MATERIEL CORPORATION to the user. This drawing is loaned for mutual assistance and is subject to recall at any time.

Property of:
 THE TECHNICAL MATERIEL CORPORATION
 MAMARONECK, NEW YORK

- HOLE LEGEND
- A - $\frac{1}{8}$ (.125) DIA. 2 REQ.
 - B - $\frac{1}{4}$ (.171) DIA. 12 REQ.
 - C - $\frac{13}{64}$ (.203) DIA. 16 REQ.
 - D - $\frac{3}{8}$ (.375) DIA. 2 REQ.
 - E - $\frac{7}{8}$ (.875) DIA.
- F - DRILL & C'SINK FOR 3-48F.H.S. 4-REQ
 G - DRILL & C'SINK FOR 8-32F.H.S. 2 REQ.



NOTES:
 USE MATERIAL THICKNESS FOR MAX. RADIUS ON ALL BENDS.

C	1	2 G. HOLES were C Holes	4-12-51	4652	RU	JLL	JLL
B	1	S-404 YEL. IRIDITE WAS 1/8	11-05-51	1001	AB	JLL	EMN
A	1	S-101 CAUSTIC DIP	2/3/59	743	U.C.B.	JLL	JLL
ISSUE	ITEM	CHANGED FROM	DATE	CN. NO.	DRAFTS	CHECKER	ENG. APP.
TOLERANCES		SCALE: FULL SIZE					
ALL	DEC. DIM. \pm	DRILL PUNCH, COMMERCIAL STOCK					
OTHERS	FRAC. DIM. \pm 1/64	SIZES AND MANUFACTURERS					
	ANGULAR DIM. \pm	TOLERANCES ARE NOT INCLUDED.					

1	RTF-2	POW/AMP	11-3-58
REQ PER UNIT	MODEL	PROJECT NO.	DATE
		ASSY. NO.	
USED ON			

REQ. ITEM	PART NO.	DESCRIPTION	SYMBOL
.064 THICK		THE TECHNICAL MATERIEL CORP.	
STOCK SIZE		MAMARONECK, NEW YORK	
ALUMINUM	30	RIGHT SIDE PLATE	
MATERIAL	WEIGHT PER PC.		
5052-H32			POW/AMP
TYPE & TEMPER	11-3-58		
CPO		DRAWN	ELEC. DES. APP. MECH. DES. APP.
HEAT TREAT. SPEC.		CHECKED	FINAL APPROVAL
S-404 YEL. IRIDITE			
FINISH & SPEC. NO.			MS-1403 C

MS 1403 C