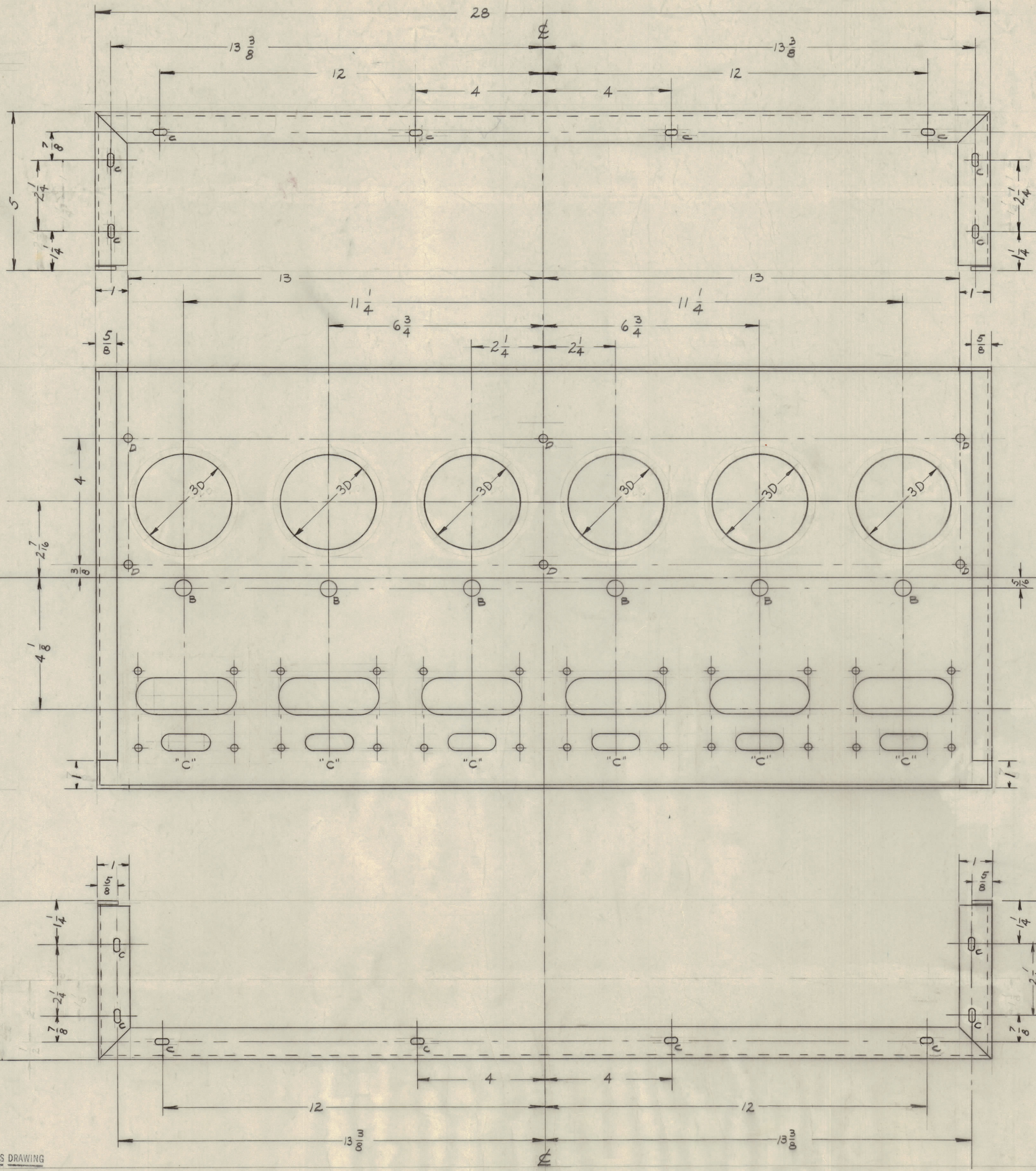
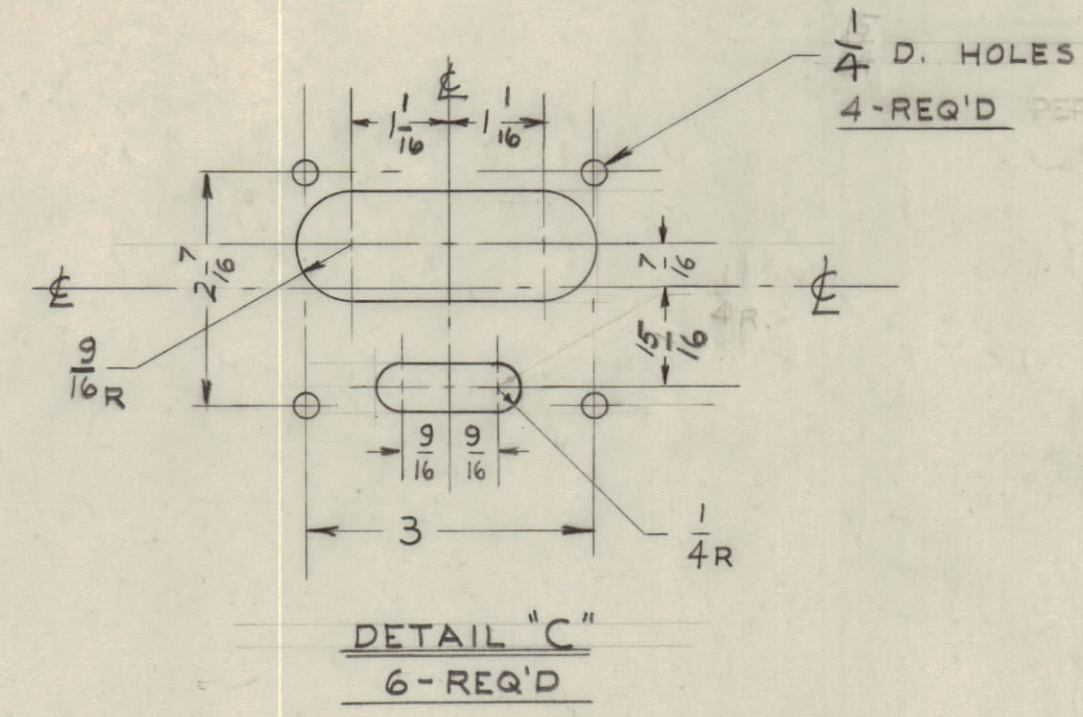
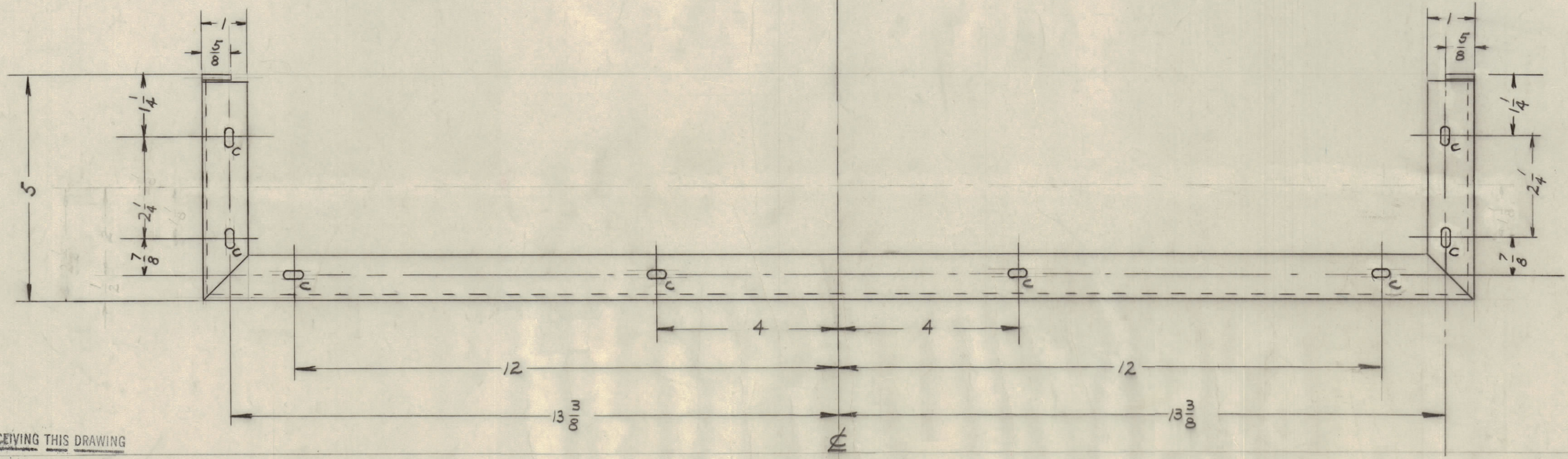
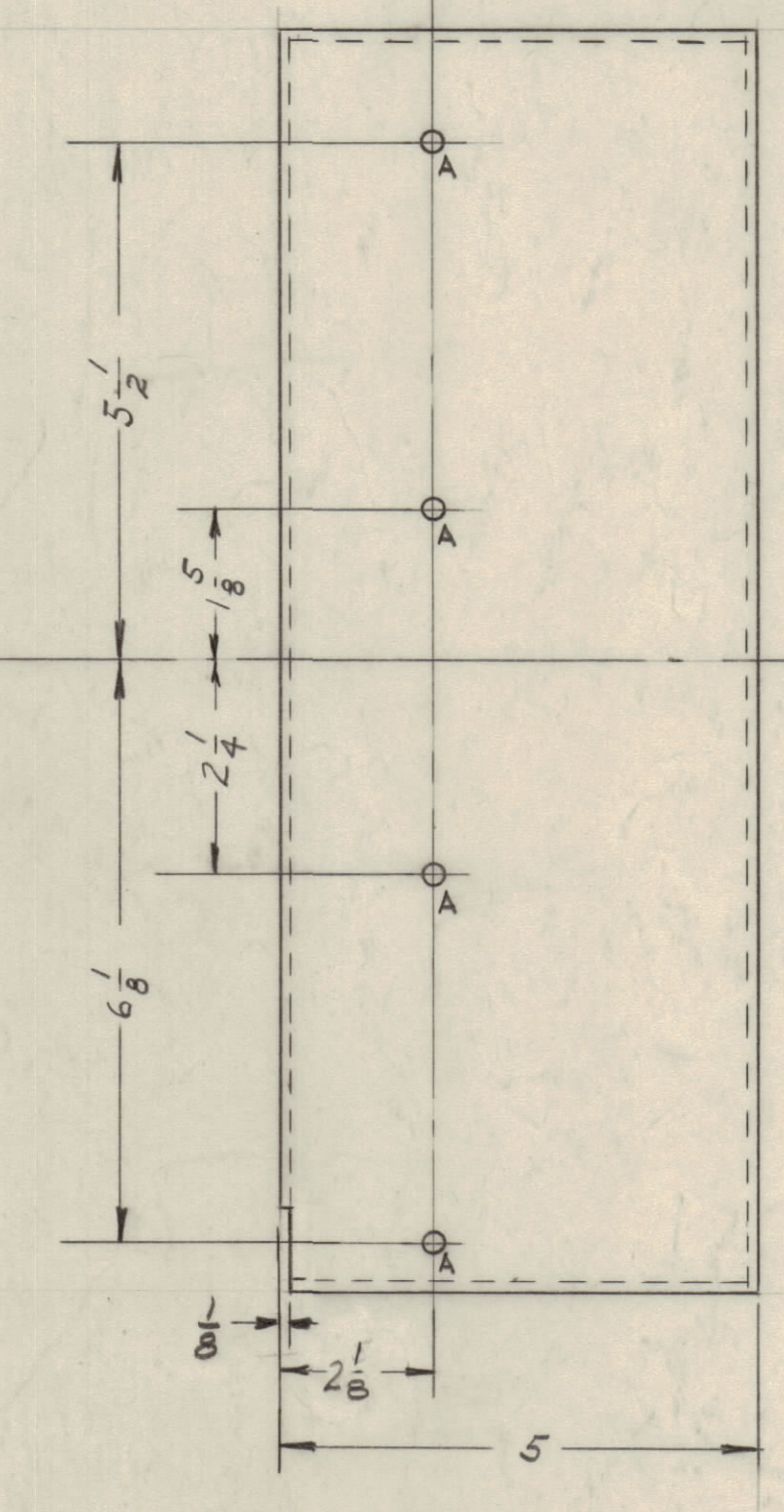
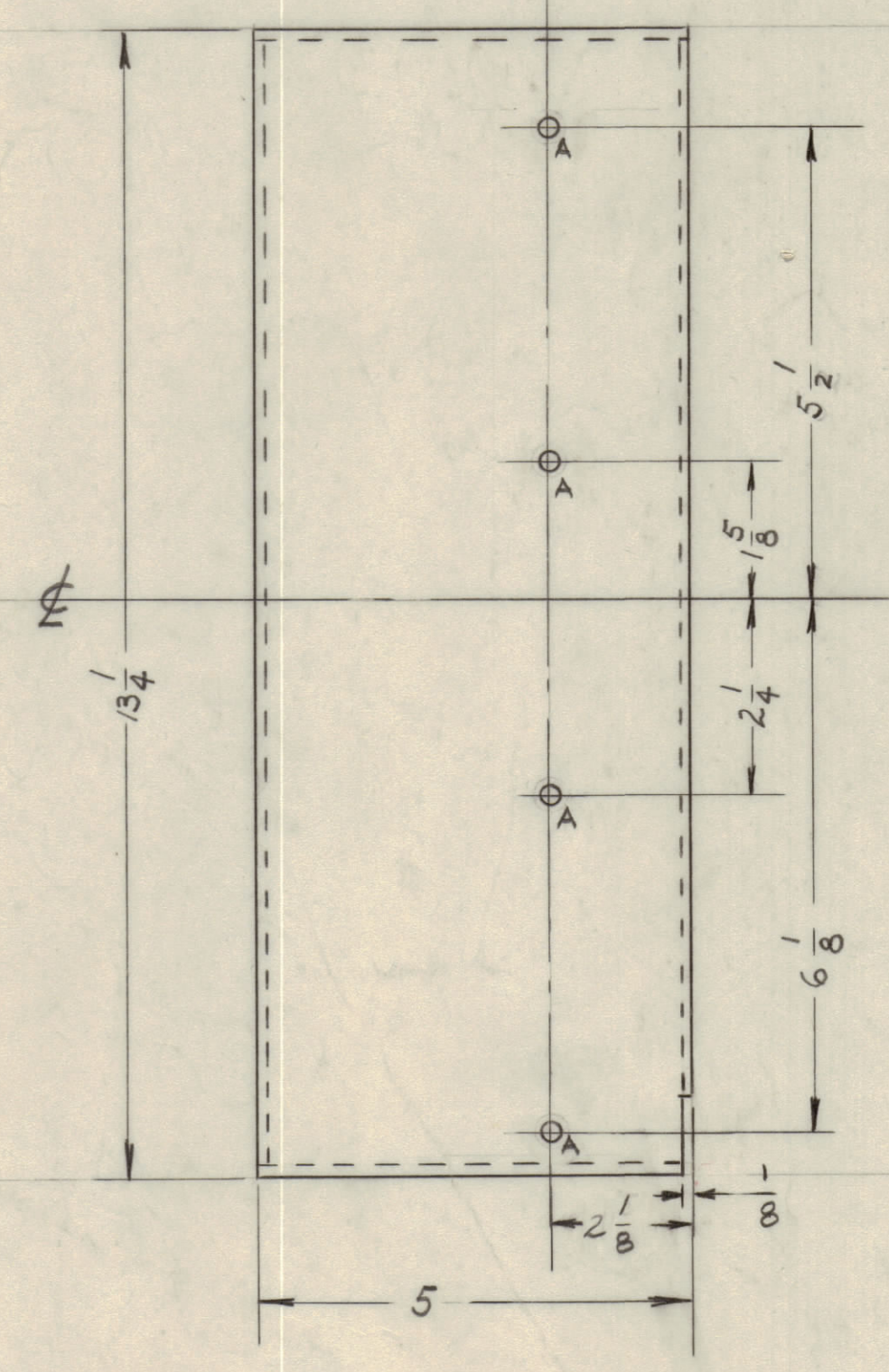


IF IT IS FOUND DESIRABLE TO CHANGE ANY TOLERANCE OR OTHER DETAIL SPECIFIED ON THIS DRAWING NOTIFY THE PURCHASER PROMPTLY.
 MAXIMUM ALLOWABLE TOLERANCES HAVE BEEN DETERMINED AND DEVIATIONS WILL BE CAUSE FOR REJECTION. REMOVE ALL BURRS AND SHARP EDGES



HOLES	REQ'D.
A - 13/64 (.203) D.	8
B - 3/4 (.75) D.	6
C - 13/64 x 13/32 SLOTS	16
D - 9/32 (.281) DIA	6



NOTE: INSIDE RADIUS BENDS 1/16

NOTICE TO PERSONS RECEIVING THIS DRAWING

THE TECHNICAL MATERIEL CORPORATION claims proprietary right in the material disclosed herein. This drawing is issued in confidence for engineering information only and may not be reproduced or used to manufacture anything shown hereon without permission from THE TECHNICAL MATERIEL CORPORATION to the user. This drawing is loaned for mutual assistance and is subject to recall at any time.

Property of:
 THE TECHNICAL MATERIEL CORPORATION
 MAMARONECK, NEW YORK

ISSUE ITEM	CHANGED FROM	DATE	CN. NO.	DRAFTS	CHECKER	ENG. APP.
1	3-DIA HOLES WERE 3/16"	12/29	710	JCB		

TOLERANCES: DEC. DIM. ± 1/64
 PRAC. DIM. ±
 ANGULAR DIM. ±

SCALE: DRILL PUNCH, COMMERCIAL STOCK
 SIZES AND MANUFACTURERS
 TOLERANCES ARE NOT INCLUDED.

REQ. PER UNIT	MODEL	PROJECT NO.	ASSY. NO.	DATE
1	GPT-10K-...	AX-103		11-14-58

USED ON

REQ. ITEM	PART NO.	DESCRIPTION	SYMBOL
1/8 THICK		THE TECHNICAL MATERIEL CORP. MAMARONECK, NEW YORK	
ALUMINUM		CHASSIS, MAIN	
5052-H32		H.V. Deck	
HEAT TREAT. SPEC.		TREIDITE S404	
		FINISH & SPEC. NO.	

DRWN: *[Signature]*
 ELEC. DES. APP. *[Signature]*
 MECH. DES. APP. *[Signature]*
 CHECKED: *[Signature]*
 FINAL APPROVAL: *[Signature]*

MS-1412 A

MS-1412 A