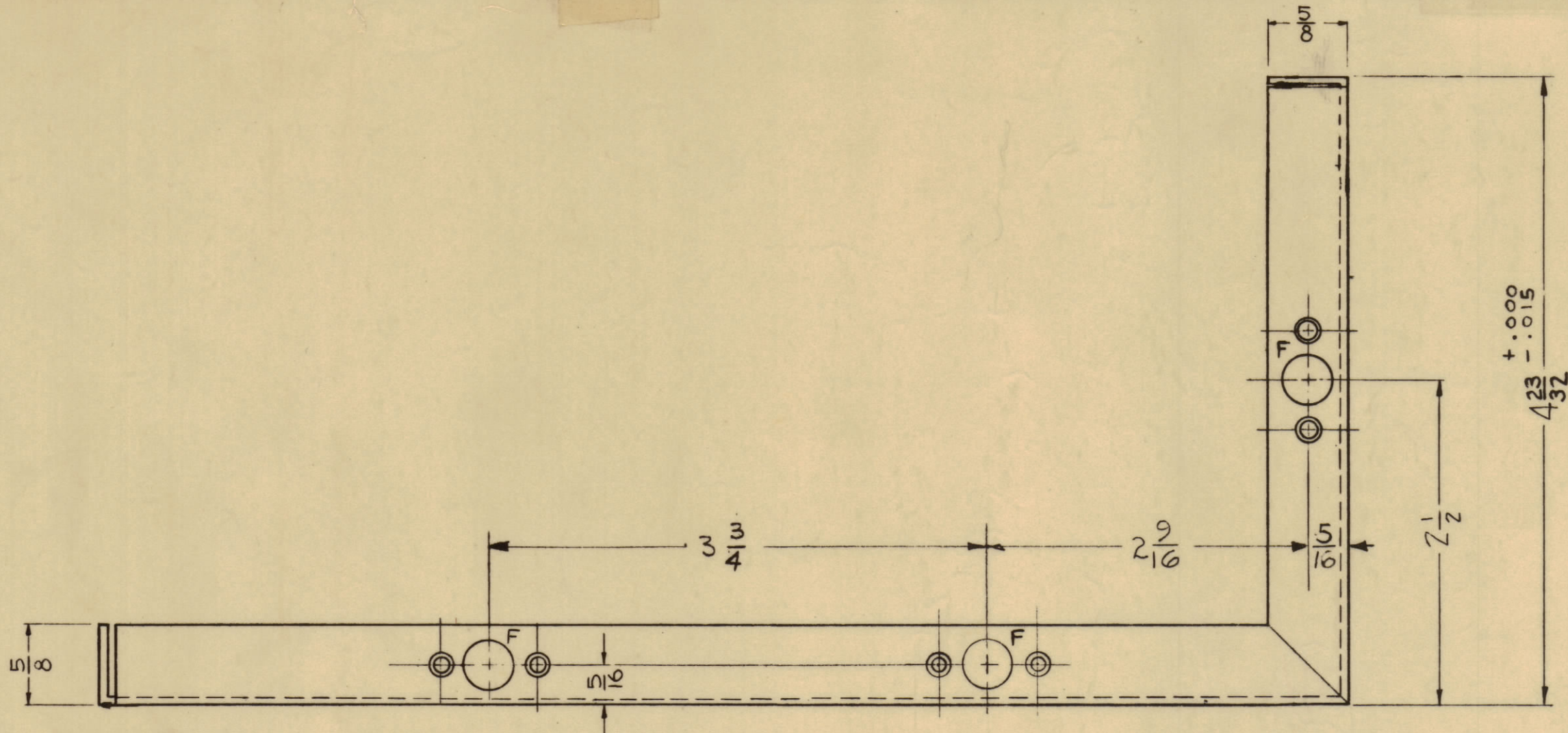
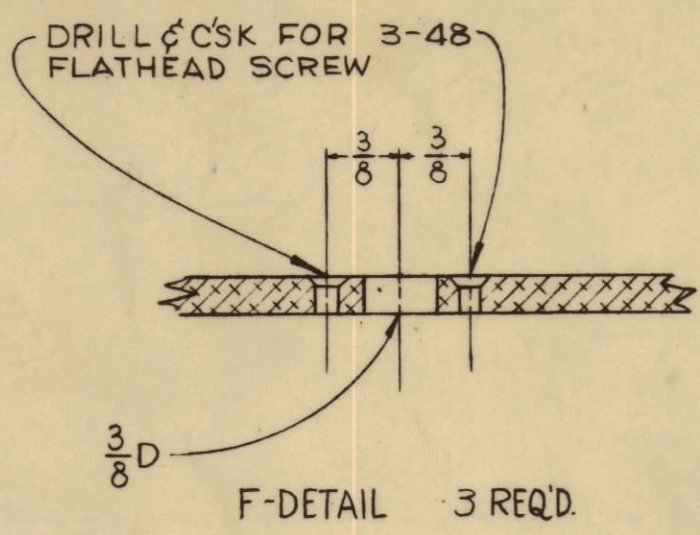


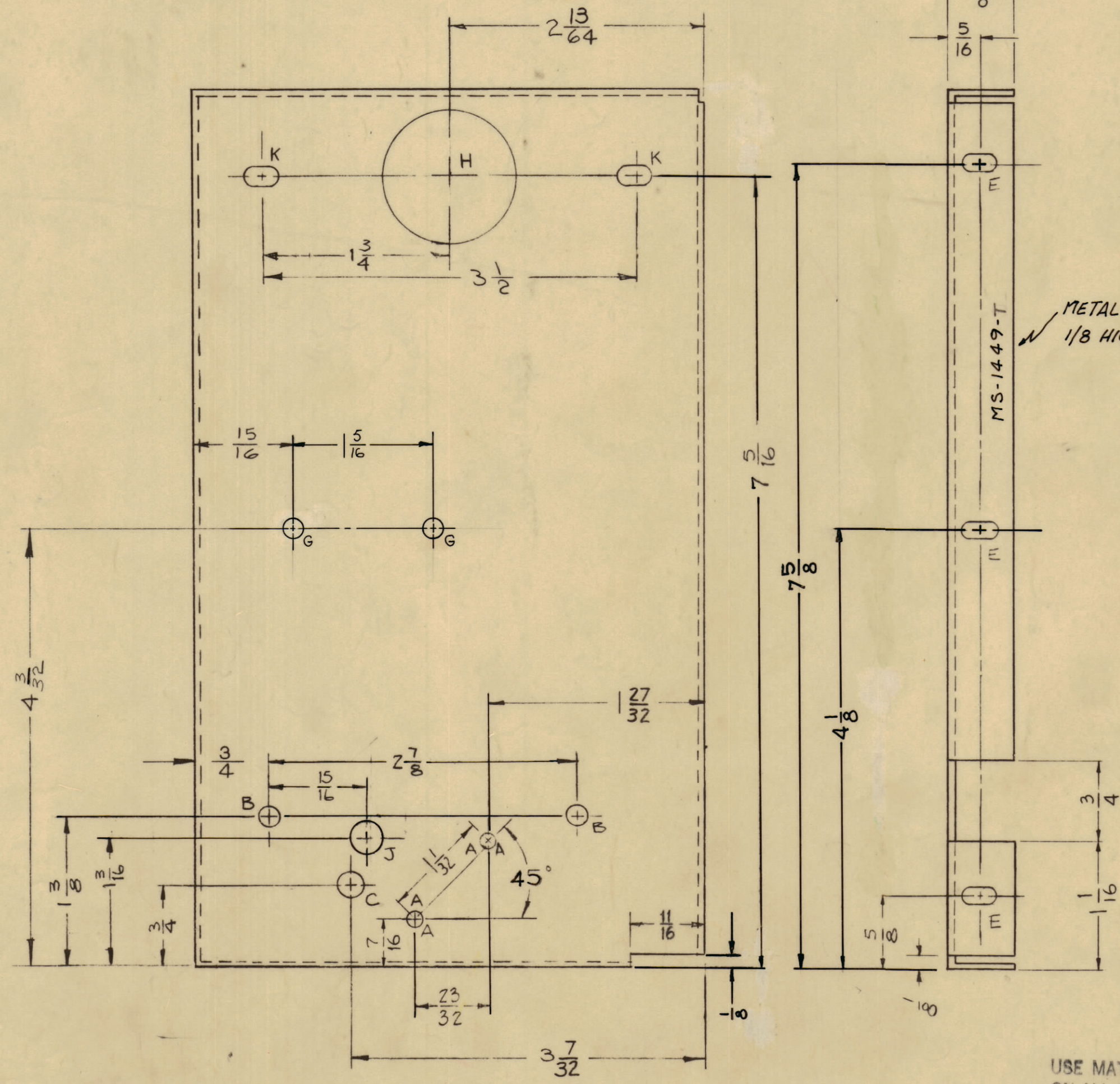
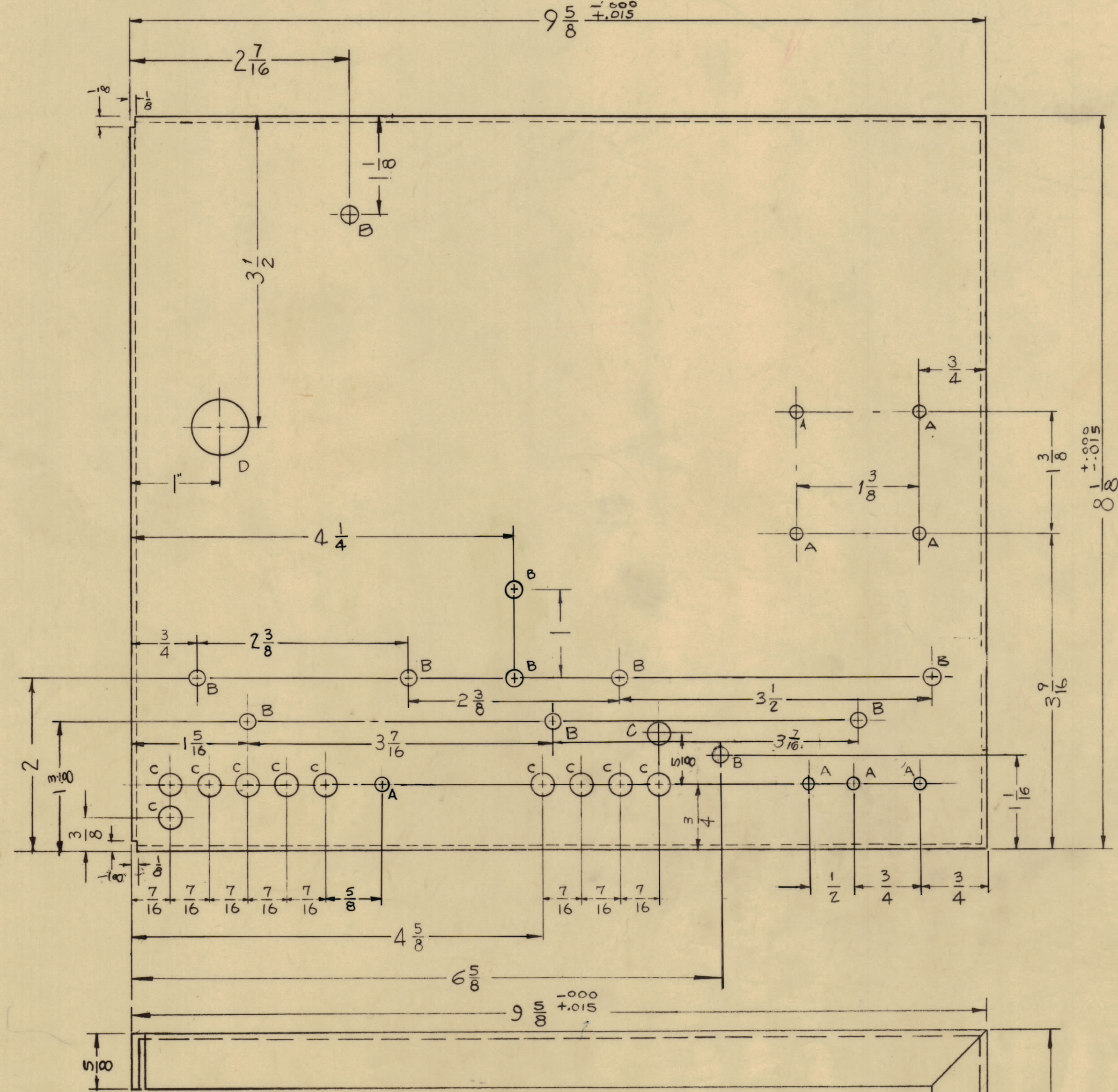
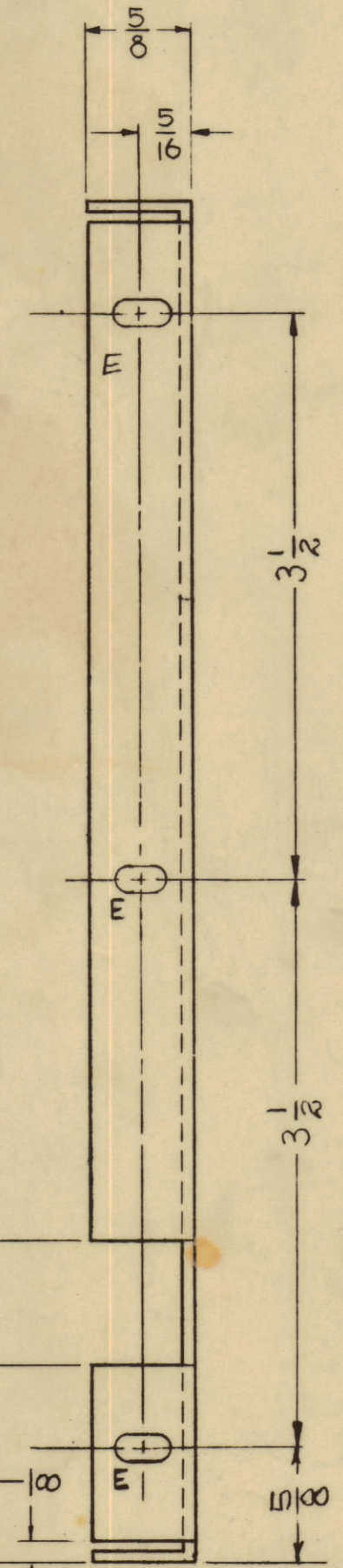
IF IT IS FOUND DESIRABLE TO CHANGE ANY TOLERANCE OR OTHER DETAIL SPECIFIED ON THIS DRAWING NOTIFY THE PURCHASER PROMPTLY.  
 MAXIMUM ALLOWABLE TOLERANCES HAVE BEEN DETERMINED AND DEVIATIONS WILL BE CAUSE FOR REJECTION. REMOVE ALL BURRS AND SHARP EDGES.



HOLE LEGEND

- |                        |                 |
|------------------------|-----------------|
| A ~ 9/64 (.140) DIA.   | 10 HOLES REQ'D. |
| B ~ 13/64 (.203) DIA.  | 13 " "          |
| C ~ 1/4 (.250) DIA.    | 13 " "          |
| D ~ 5/8 (.625) DIA.    | 1 " "           |
| E ~ 11/64 X 11/32 SLOT | 6 " "           |
| H ~ 1/4 (.250) DIA.    | 1 REQ.          |
| G ~ 1/4 (.171) DIA.    | 2 REQ.          |
| J ~ 5/16 (.312) DIA.   | 1 " "           |
| K ~ 13/64 X 13/32 SLOT | 2 REQ.          |

NOTICE TO PERSONS RECEIVING THIS DRAWING  
 THE TECHNICAL MATERIEL CORPORATION claims proprietary right in the material disclosed herein. This drawing is issued in confidence for engineering information only and may not be reproduced or used in manufacture without the written permission of THE TECHNICAL MATERIEL CORPORATION to the user. This drawing is loaned for mutual assistance and is subject to recall at any time.  
 Property of:  
 THE TECHNICAL MATERIEL CORPORATION  
 MAMARONECK, NEW YORK



METAL STAMP TMC PART NO. 1/8 HIGH, GOTHIC.

MS-1449 T

USE MATERIAL THICKNESS FOR MAX. RADIUS ON ALL BENDS UNLESS OTHERWISE SPECIFIED

REV	DESCRIPTION	DATE	BY	CHKD	APP'D
K	4 Direction of E Slots Changed	12-21-60	RU	RU	[Signature]
J	2 1/8 DIA HOLES WERE B HOLES (3-48) SIZES	5-17-60	RU	RU	[Signature]
H	2 1/8 DIA HOLES WERE B HOLES (3-48) SIZES	12-1-59	RU	RU	[Signature]
G	2 1/8 DIA HOLES WERE B HOLES (3-48) SIZES	9-24-59	RU	RU	[Signature]
F	1 1/16 HOLE DIM CHANGED 1 1/4 WAS 3/4	9-24-59	RU	RU	[Signature]
E	1 1/16 HOLE DIM CHANGED 1 1/4 WAS 3/4	9-24-59	RU	RU	[Signature]
D	1 1/16 HOLE DIM CHANGED 1 1/4 WAS 3/4	5-14-59	RU	RU	[Signature]
C	1 1/16 HOLE DIM CHANGED 1 1/4 WAS 3/4	4-18-59	RU	RU	[Signature]
B	1 1/16 HOLE DIM CHANGED 1 1/4 WAS 3/4	3-16-59	RU	RU	[Signature]
A	1 1/16 HOLE DIM CHANGED 1 1/4 WAS 3/4	2-5-59	RU	RU	[Signature]

REV	DESCRIPTION	DATE	BY	CHKD	APP'D
T	1 1/8 HOLE ADDED	3-12-63	RU	RU	[Signature]
S	1 1/8 DIM. ADDED TO D HOLE	10-26-61	RU	RU	[Signature]
R	1 1/8 HOLE DELETED BECOMES (G) HOLE, (G) HOLE ADDED	3-13-62	RU	RU	[Signature]
Q	1 1/8 DIM DELETED, 7/5/8 DIM ADDED	2-28-62	RU	RU	[Signature]
P	1 1/8 DIM WAS 3/16, 4 1/8 DIM WAS 3 1/2	11-8-61	RU	RU	[Signature]
N	DIM. 4 1/4 WAS 4 1/8	11-8-61	RU	RU	[Signature]
M	(1) HOLE ADDED (CENTER)	5-3-61	RU	RU	[Signature]
L	DIM. 2 3/16 WAS 3 5/16 (RIGHT SIDE VIEW)	2-7-61	RU	RU	[Signature]
K	DIM. 2 3/16 WAS 4 1/16 (TOP, BOTTOM L & R)	2-7-61	RU	RU	[Signature]
J	DIM. 5/16 ADDED (TOP LIP)	2-7-61	RU	RU	[Signature]
I	DIM. 2 3/16 WAS 2 1/4, 1 1/2 WAS 1 1/4 (TOP VIEW)	2-7-61	RU	RU	[Signature]

REQ PER UNIT	MODEL	PROJECT NO.	ASSY. NO.	DATE
1	RFB-1	PAL-1K		12-21-60
1	RFB-1	GPT-10K		6-23-59
1	RFB-1	GPT-10K		11-21-58

REQ. ITEM	PART NO.	DESCRIPTION	SYMBOL
1	064	THE TECHNICAL MATERIEL CORP. MAMARONECK, NEW YORK	
1	ALUMINUM	SHIELD, R.F.	
1	5052-H32		
1	TYPE & TEMPER		
1	HEAT TREAT. SPEC.		
1	FINISH & SPEC. NO.		

D4  
D1  
D2  
D3  
5

D2 D3 D1 D4 D5