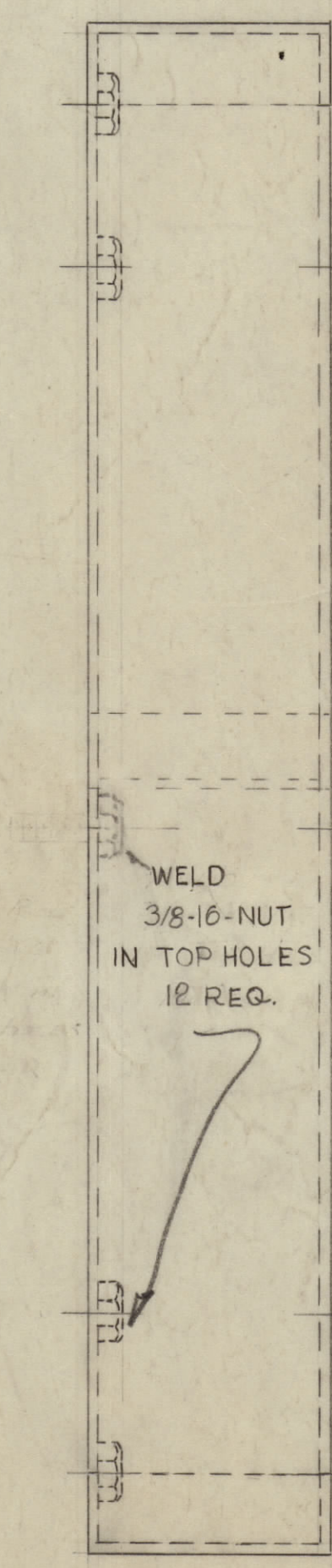
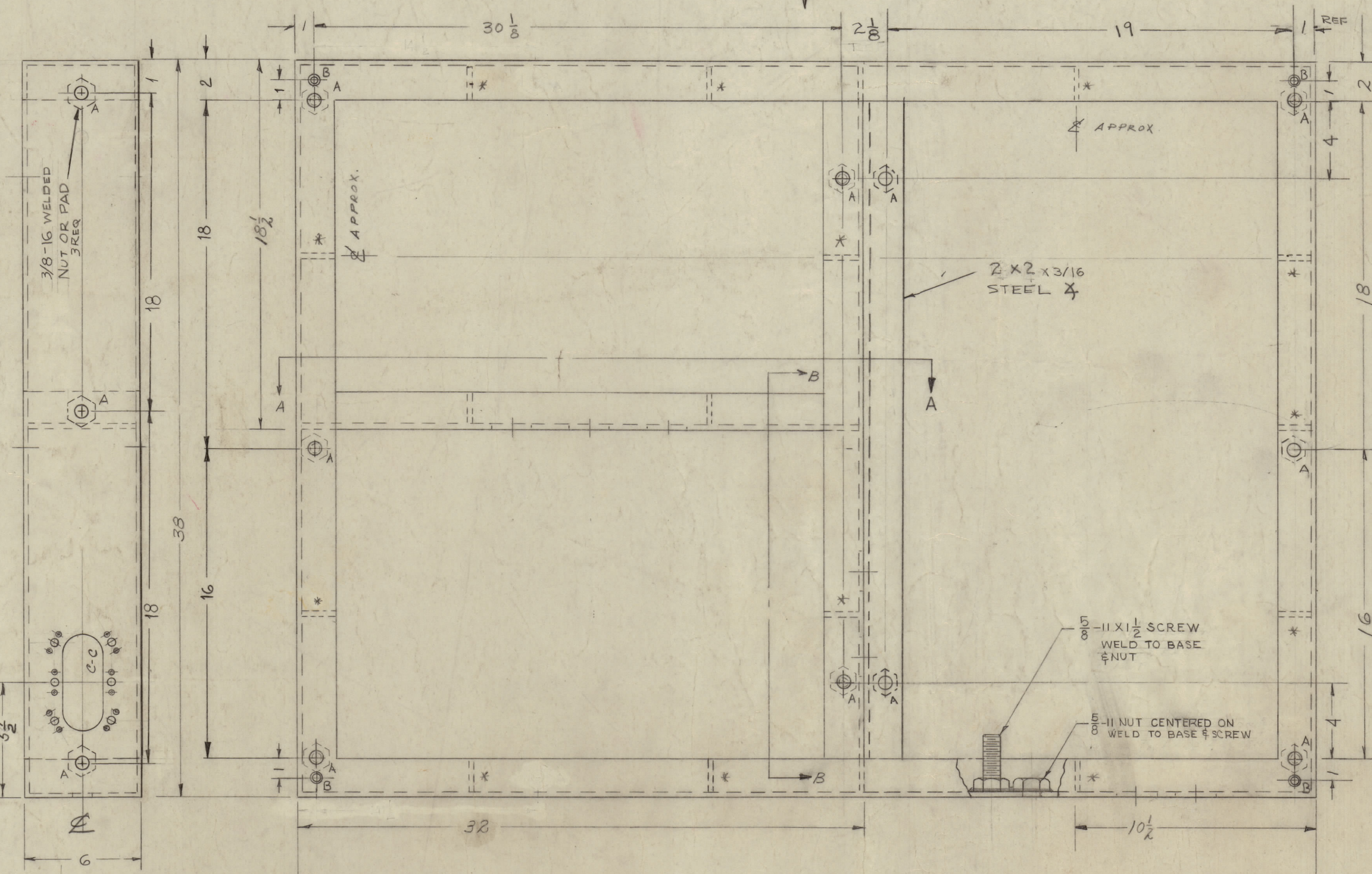
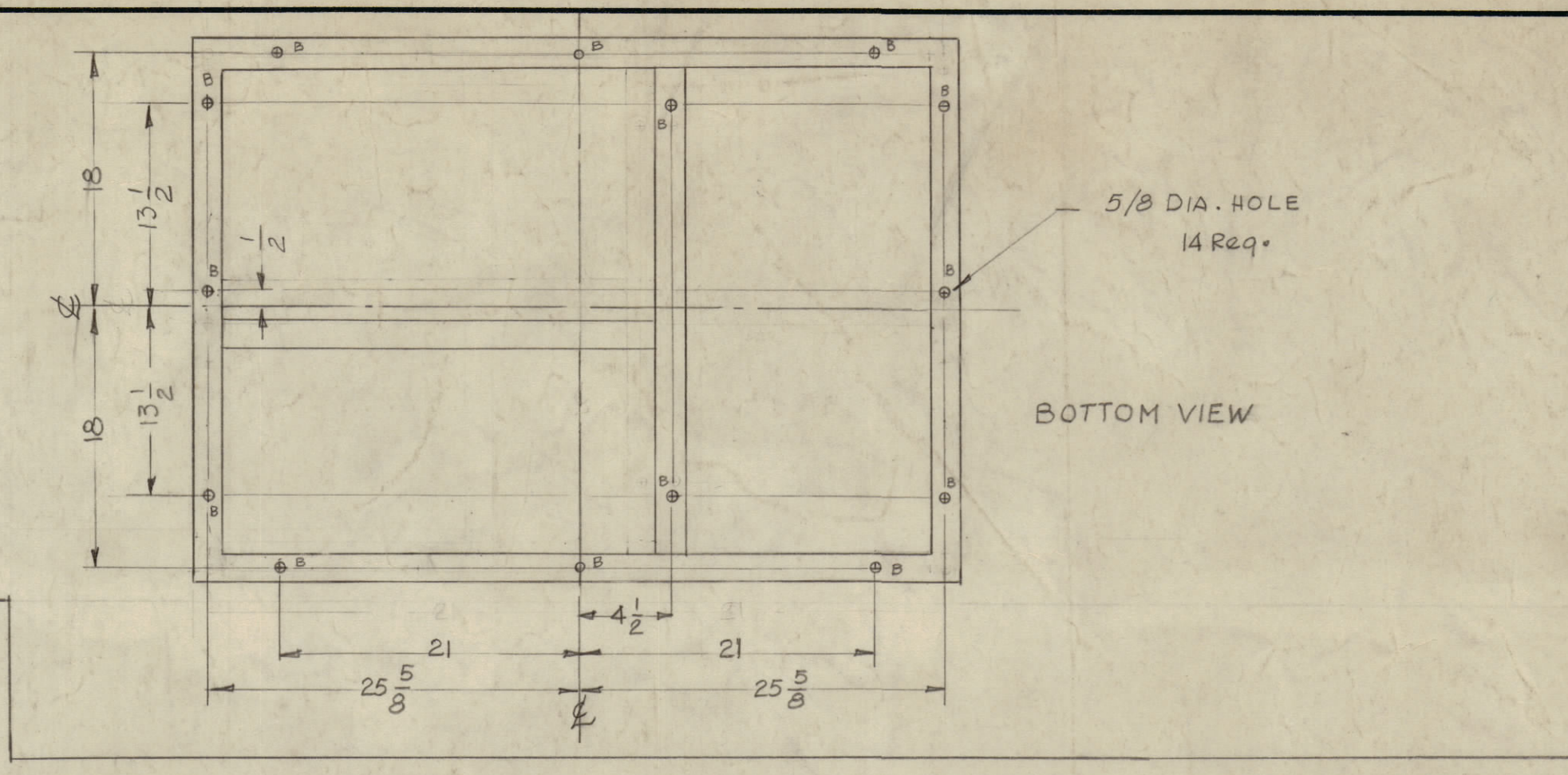
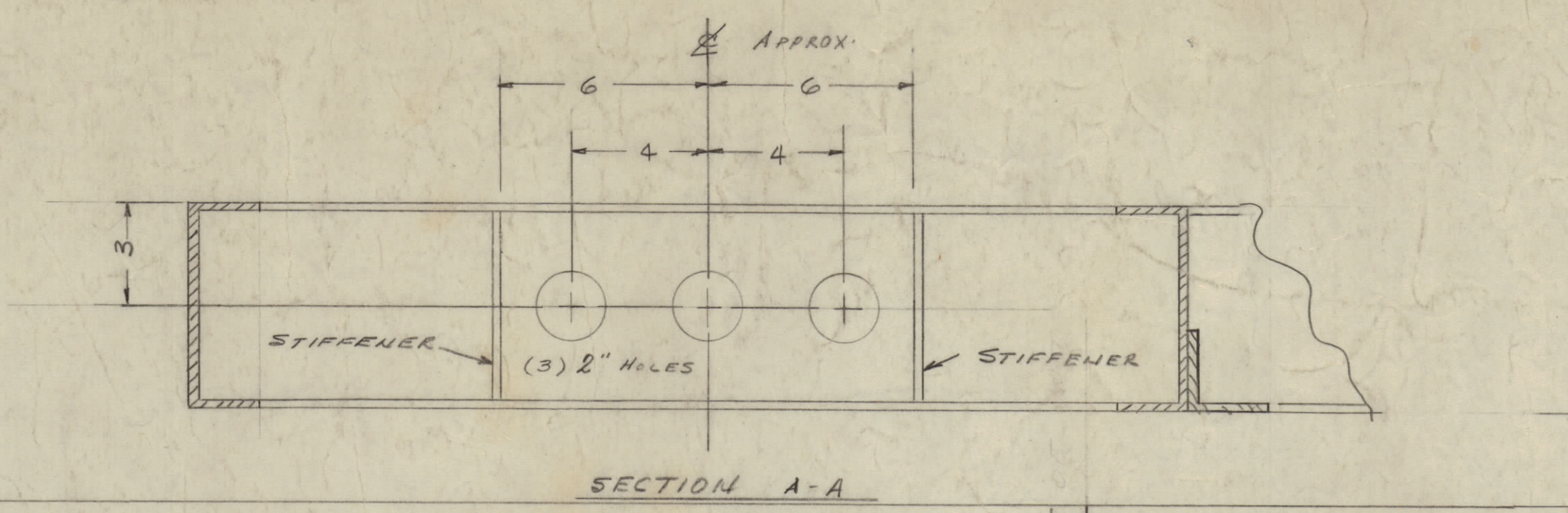
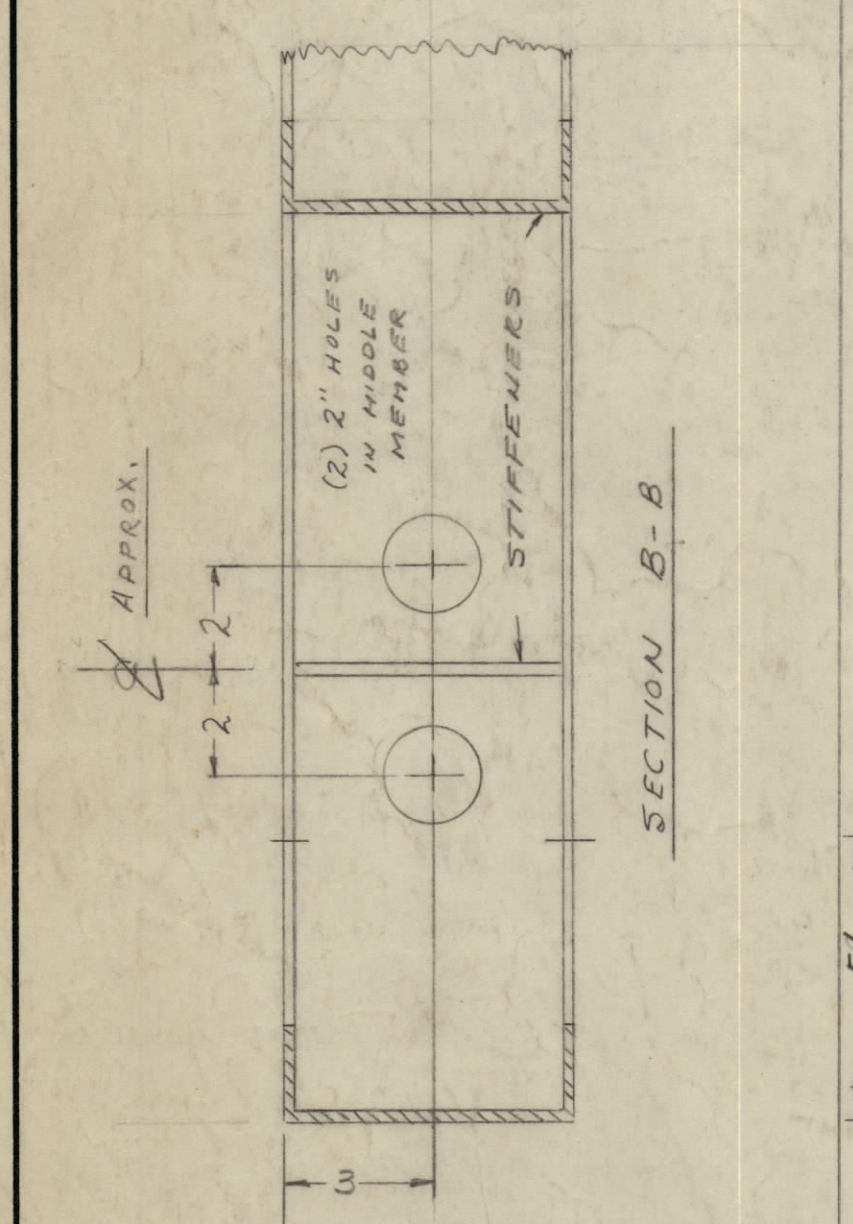
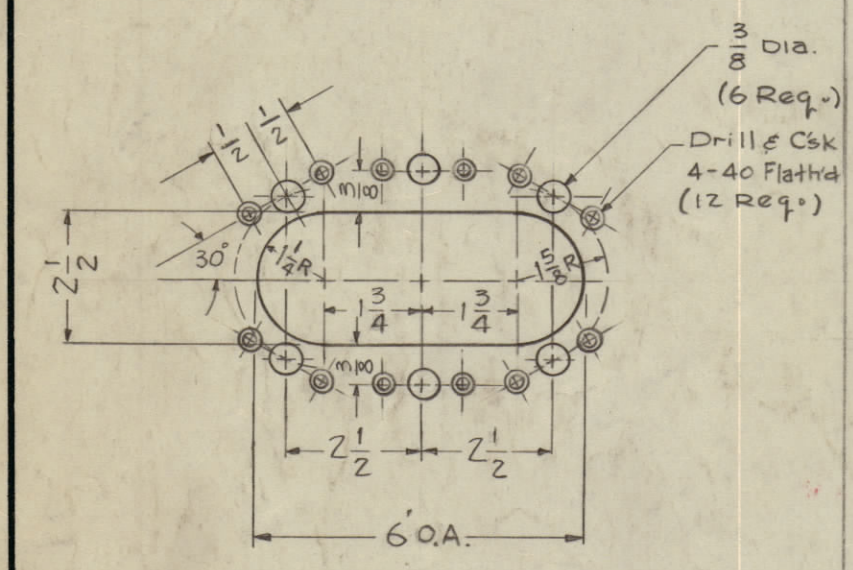
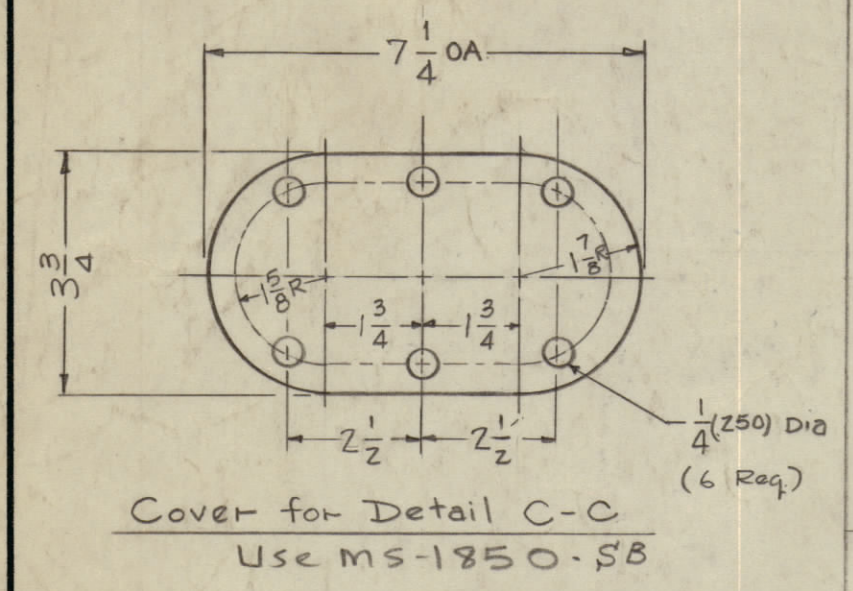


IF IT IS FOUND DESIRABLE TO CHANGE ANY TOLERANCE OR OTHER DETAIL SPECIFIED ON THIS DRAWING NOTIFY THE PURCHASER PROMPTLY.  
 MAXIMUM ALLOWABLE TOLERANCES HAVE BEEN DETERMINED AND DEVIATIONS WILL BE CAUSE FOR REJECTION. REMOVE ALL BURRS AND SHARP EDGES



- \* (10) A ON TOP
- (8) A ON BOTTOM
- (3) A ON RT. SIDE
- \* A 7/16 (.438) DIA — 19 REQ.
- B DR & TAP FOR 8-32 4 REQ.

M	2	SEE EMN # 10946	3/24/50	10946	A.M.		
L	1	2 A HOLES DELETED	4-28-50	6652	T.F.		
K	1	ON TOP VIEW 2 A HOLES ADDED	1-22-52	6258	G.D.L.		
J	1	BOTTOM VIEW ADDED 2 B HOLES REQUIRED					
H	1	7/8" HOLES ADDED	1/15/50	3196			
G	1	3 WELDED NUTS ADDED	9/6/50	2376			
F	1	PAINT SPEC MODIFIED	5/9/50	2254			
E	1	B WAS DRILL TAP 10-32					
D	2	EXTRA 3/8" X 2 WELDED NUTS ADDED					
C	1	TWO WELDED NUTS & TWO A HOLES ADDED					
B	1	ADDED (1) C-C DETAIL	4-6-50	2207			
A	1	FOUR B HOLES ADDED	11/15/50	243			
A	1	ADDED 1 1/2" X 2 CAPPED FINISH CHART	9/6/50	1226			
A	1	IN FINISH 3197 WAS 5220	4/10/50	4	J.R.B.		
A	1	COVER FOR DETAIL C-C ADDED					
A	1	DETAIL C-C ADDED					
A	1	ADDED 3/8" HOLE & 3/8" DIA. NUT					

DO NOT PRIME OR PAINT THIS SURFACE

FOR MS-1458-1 PRIME & PAINT THIS SURFACE

FOR MS-1458-2 DO NOT PRIME OR PAINT THIS SURFACE

DO NOT PRIME OR PAINT THIS SURFACE

FINISH NOTE:  
 DEGREASE & PREPARE SURFACES

EXCEPT { S114 ZINC CHROMATE PRIMER WHERE S520 TMC BLUE GRAY TEXTURED VINYL PAINT OR PAINT & PRIME TO CUSTOMERS SPEC. ON DWG.

TMC PART NO.	SURFACES TO BE FINISHED
MS-1458-1	ALL SURFACES EXCEPT TOP & BOTTOM AS NOTED ON DWG.
MS-1458-2	ALL SURFACES EXCEPT TOP, BOTTOM & RIGHT SIDE AS NOTED ON DWG.

\* DENOTES POSITION OF STIFFENERS ON BASE

NOTICE TO PERSONS RECEIVING THIS DRAWING

THE TECHNICAL MATERIEL CORPORATION claims proprietary right in the material disclosed hereon. This drawing is issued in confidence for engineering information only and may not be reproduced or used to manufacture anything shown hereon without permission from THE TECHNICAL MATERIEL CORPORATION to the user. This drawing is loaned for mutual assistance and is subject to recall at any time.

Property of:  
 THE TECHNICAL MATERIEL CORPORATION  
 MAMARONECK, NEW YORK

REQ. ITEM	PART NO.	DESCRIPTION	SYMBOL
	3/16 THICK	THE TECHNICAL MATERIEL CORP.	
	STOCK SIZE	MAMARONECK, NEW YORK	
	STEEL (FORMED)	BASE, MOUNTING	
	MATERIAL	WEIGHT PER PC.	
	TYPE & TEMPER	DRAWN	ELEC. DES. APP. MECH. DES. APP.
	HEAT TREAT. SPEC.	CHECKED	FINAL APPROVAL
	SEE FINISH NOTE		
	FINISH & SPEC. NO.		

REQ PER UNIT	MODEL	PROJECT NO.	ASSY. NO.	DATE
1		GPT-10K1		11-26-58
		USED ON		