

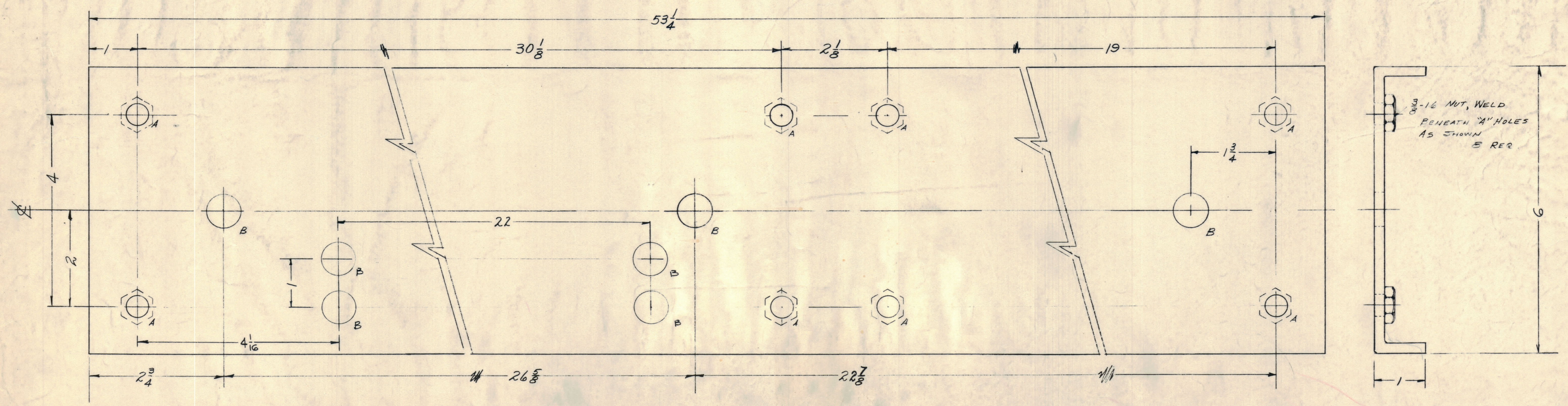
IF IT IS FOUND DESIRABLE TO CHANGE ANY TOLERANCE OR OTHER DETAIL SPECIFIED ON THIS DRAWING NOTIFY THE PURCHASER PROMPTLY.  
 MAXIMUM ALLOWABLE TOLERANCES HAVE BEEN DETERMINED AND DEVIATIONS WILL BE CAUSE FOR REJECTION.  
 REMOVE ALL BURRS AND SHARP EDGES

**NOTICE TO PERSONS RECEIVING THIS DRAWING**

THE TECHNICAL MATERIEL CORPORATION claims proprietary right in the material disclosed hereon. This drawing is issued in confidence for engineering information only and may not be reproduced or used to manufacture anything shown hereon without permission from THE TECHNICAL MATERIEL CORPORATION to the user. This drawing is loaned for mutual assistance and is subject to recall at any time.

Property of:  
 THE TECHNICAL MATERIEL CORPORATION  
 MAMARONECK, NEW YORK

HOLE'S  
 A -  $\frac{7}{16}$  (.438) DIA. - 8 REQ  
 B -  $\frac{1}{16}$  (.688) DIA. 7 REQ



FINISH NOTE:  
 DEGREASE & PREPARE SURFACE  
 FOR FOLLOWING:

PRIME OR DIP	FINISH
5/14 ZINC CHROMATE	S220 TMC P&A F BLUE GRAY SMOOTH ENAMEL
OR PRIME & PAINT PER CUSTOMER SPECIFICATION	

ISSUE	ITEM	CHANGED FROM	DATE	CN. NO.	DRAFTS	CHECKER	ENG. APP.
E	1	DELETED - 1/2 - 2 WAS UMBER FINISH ADD PER CUST. SPECS	5/29/60	23	DR		
D	1	ADDED FINISH CHART	11/6/58	1243			
C	1	3/16 NUT WAS (2) 1/16 SCREW IN INSIDE 'A' HOLES	4-2-58				
B	1	22 7/8 WAS 21 1/8					
A	1	21 1/8 WAS 22 7/8					

SCALE: Full SIZE

TOLERANCES:  
 ALL DEC. DIM. ±  
 OTHERS FRACTIONAL DIM. ± 1/64  
 ANGULAR DIM. ±

DRILL, PUNCH, COMMERCIAL STOCK SIZES AND MANUFACTURERS TOLERANCES ARE NOT INCLUDED.

3	GPT-10,000	685-354	11-26-58
REQ PER UNIT	MODEL	PROJECT NO.	DATE
		ABBY. NO.	

REQ. ITEM	PART NO.	DESCRIPTION	SYMBOL
		3/16 THICK	
		STOCK SIZE	
		STEEL FORMED	
		MATERIAL	
		TYPE & TEMPER	
		HEAT TREAT. SPEC.	
		SEE FINISH NOTE	
		FINISH & SPEC. NO.	

THE TECHNICAL MATERIEL CORP.  
 MAMARONECK, NEW YORK

SHOCK MOUNTING CHANNEL

11-20-58

CHECKED: [Signature] FINAL APPROVAL: [Signature]

MS-1459 E

MS-1459