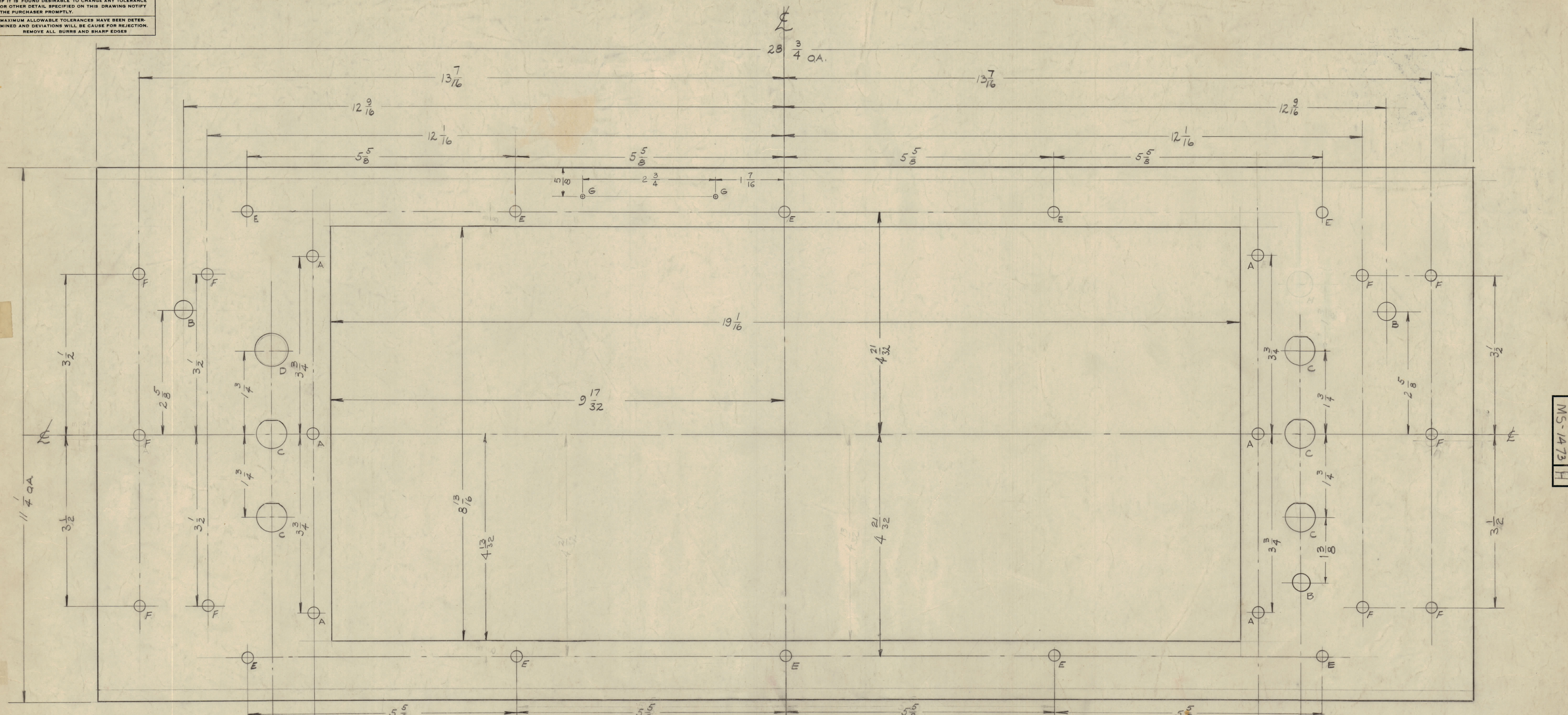


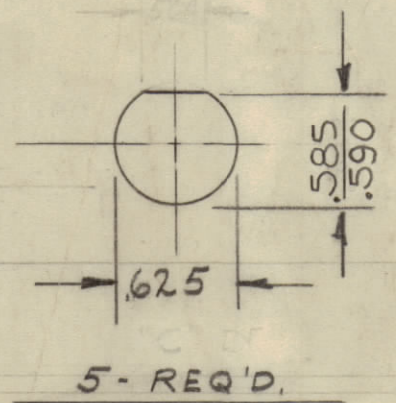
IF IT IS FOUND DESIRABLE TO CHANGE ANY TOLERANCE OR OTHER DETAIL SPECIFIED ON THIS DRAWING NOTIFY THE PURCHASER PROMPTLY.
 MAXIMUM ALLOWABLE TOLERANCES HAVE BEEN DETERMINED AND DEVIATIONS WILL BE CAUSE FOR REJECTION.
 REMOVE ALL BURRS AND SHARP EDGES



NOTES:
 S-404 YELLOW IRIDITE
 S114 ZINC CHROMATE PRIMER
 S115 TMC SMOOTH GREY ENAMEL
 OR PRIME & PAINT TO CUST. SPEC.
 FRONT & EDGES ONLY

- MACHINING
- LATERAL BOW OF PANEL MUST BE KEPT TO .031 TOLERANCE.
 - MILL ALL EDGES
 - HOLES MUST BE DRILLED
 - PANEL MUST BE FREE OF ALL MACHINING MARKS, GOUGES, AND SCRATCHES. IF NECESSARY, SAND FRONT OF PANEL WITH NO. 120 GRIT SAND PAPER.

HOLES	REQ'D.
A - 1/4 DIA. (.250) D.	6
B - 3/8 (.375) D.	3
C - SEE DETAIL	5
D - 1/16 (.0625) D.	1
E - 3/16 DIA. (.1875) DIA.	10
F - 7/32 DIA.	10
G - .078 DIA.	2
H - 1/2 DIA.	1



NOTICE TO PERSONS RECEIVING THIS DRAWING
 THE TECHNICAL MATERIEL CORPORATION claims proprietary right in the material disclosed herein. This drawing is issued in confidence for engineering information only and may not be reproduced or used to manufacture anything shown hereon without permission from THE TECHNICAL MATERIEL CORPORATION to the user. This drawing is loaned for mutual assistance and is subject to recall at any time.

Property of:
 THE TECHNICAL MATERIEL CORPORATION
 MAMARONECK, NEW YORK

ISSUE	ITEM	CHANGED FROM	DATE	BY	CHECKER	ENG. APP.
D	1	S-404 YEL. IRIDITE WAS S-101 CAUSTIC DIP	10/1/59	1001	AB	EMN
C	1	6A Holes Added	9/10/59	1446	J.C.B.	EMN
B	1	6E Holes Deleted	5/27/59	1068	J.C.B.	EMN
A	1	10 B Holes Added	7/5/59	774	J.C.B.	EMN

IN REF. NOTE	LETTERING	REAR/DELE	2 SHEETS	YADD.	225-65	13587	24	24	24
G	1	(2) G HOLES ADDED	5-9-62	6693	G.D.L.	EMN	EMN	EMN	EMN
F	2	(A) HOLE WAS 13/16 DIA.							
E	1	(B) HOLE WAS 1/4 DIA.							
D	1	(C) HOLES WERE 1/8 HOLES							
C	1	Detail (C) 5/16 Dia. .564	531-61	4988	RD	EMN	EMN	EMN	EMN

REQ PER UNIT	MODEL	PROJECT NO.	ASSY. NO.	DATE
1	TSTG-10K	AP-126		11-18-58
1	GPT-10K	AX-104		

REQ. ITEM	PART NO.	DESCRIPTION	SYMBOL
	3/16 THICK	THE TECHNICAL MATERIEL CORP. MAMARONECK, NEW YORK	
	ALUMINUM	PANEL, FRONT	
	2024-T3	DRIVER DRAWER, IPA	
	TYPE & TEMPER	DRIVEN	
	HEAT TREAT. SPEC.	DRIVEN	
	SEE FINISH NOTE	DRIVEN	
	FINISH & SPEC. NO.	DRIVEN	

MS-1473 H