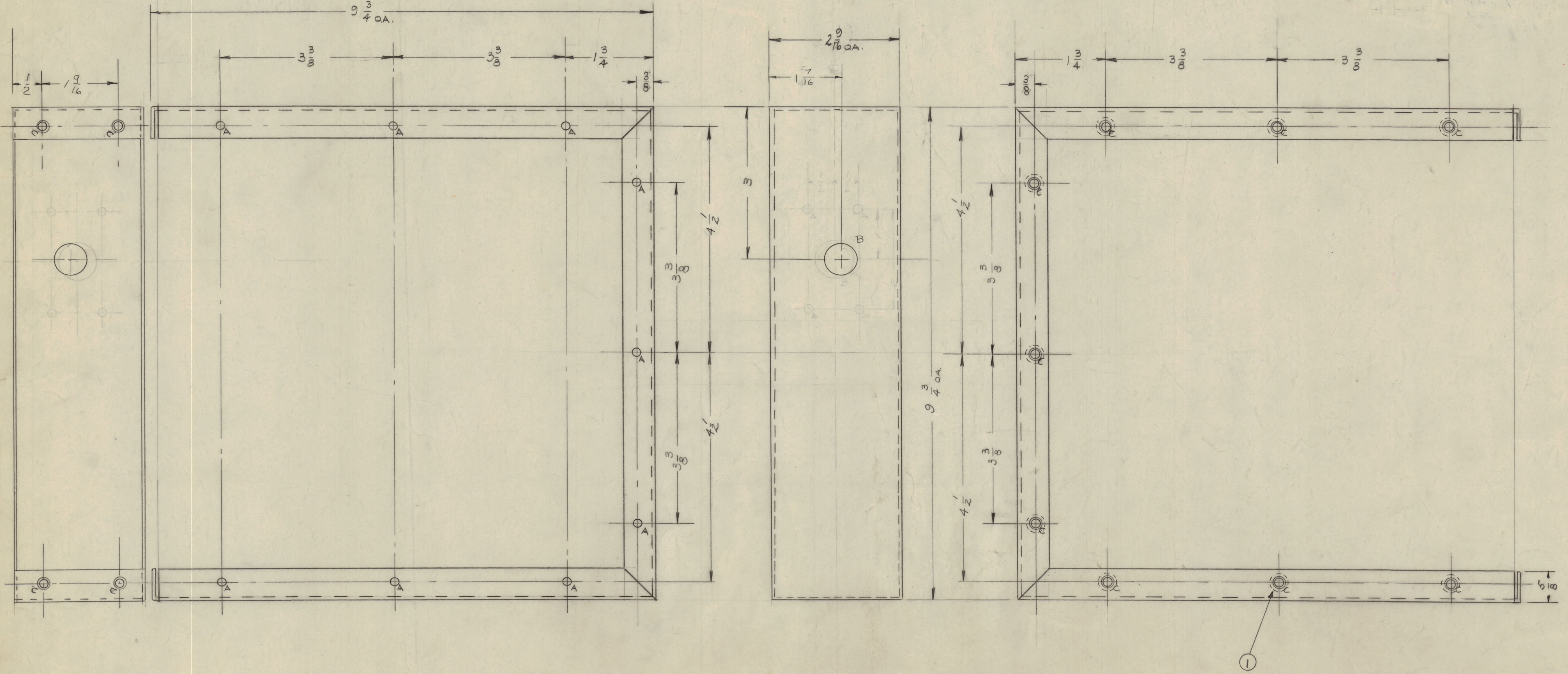


IF IT IS FOUND DESIRABLE TO CHANGE ANY TOLERANCE OR OTHER DETAIL SPECIFIED ON THIS DRAWING NOTIFY THE PURCHASER PROMPTLY.  
 MAXIMUM ALLOWABLE TOLERANCES HAVE BEEN DETERMINED AND DEVIATIONS WILL BE CAUSE FOR REJECTION. REMOVE ALL BURRS AND SHARP EDGES

A - 1/16" (.171) DIA. 9 REQ  
 B - 7/8" DIA. 7 REQ.  
 C - .224 - .221 DIA (TO MOUNT NT-129-832-4) 13 REQ



MS-1506 C

ISSUE	ITEM	CHANGED FROM	DATE	CN. NO.	DRAFTS	CHECKER	ENG. APP.
	1	1/8" HOLE WAS 5/8 DIA	7-10-61	5201	GDL		
	2	1/8" HOLE WAS 3/4 D.	7	2	cy		
	3	1/8" HOLE RELOCATED	22				
	4	1/8" HOLE DELETED	60				
	5	1/8" HOLE DELETED	12-2				
	6	1/8" HOLE DELETED	89				
	7	1/8" HOLE DELETED					
	8	1/8" HOLE DELETED					
	9	1/8" HOLE DELETED					
	10	1/8" HOLE DELETED					
	11	1/8" HOLE DELETED					
	12	1/8" HOLE DELETED					
	13	1/8" HOLE DELETED					

NOTICE TO PERSONS RECEIVING THIS DRAWING  
 THE TECHNICAL MATERIEL CORPORATION claims proprietary right in the material disclosed hereon. This drawing is issued in confidence for engineering information only and may not be reproduced or used to manufacture anything shown hereon without permission from THE TECHNICAL MATERIEL CORPORATION to the user. This drawing is loaned for mutual assistance and is subject to recall at any time.  
 Property of:  
 THE TECHNICAL MATERIEL CORPORATION  
 MAMARONECK, NEW YORK

REQ. ITEM	PART NO.	DESCRIPTION	SYMBOL
13	1	NT-129-832-4 WOT, FOUND, SWAGE TYPE	
		.081	
		ALUMINUM	
		5052-H32	
		WRAP AROUND, BAND SWITCH	
		121DITE	

MODEL	PROJECT NO.	ASS'Y. NO.	DATE
6PT10K0	#X-137		12-22-58

HEAT TREAT. SPEC.	CHECKED	FINAL APPROVAL
		MS-1506 C