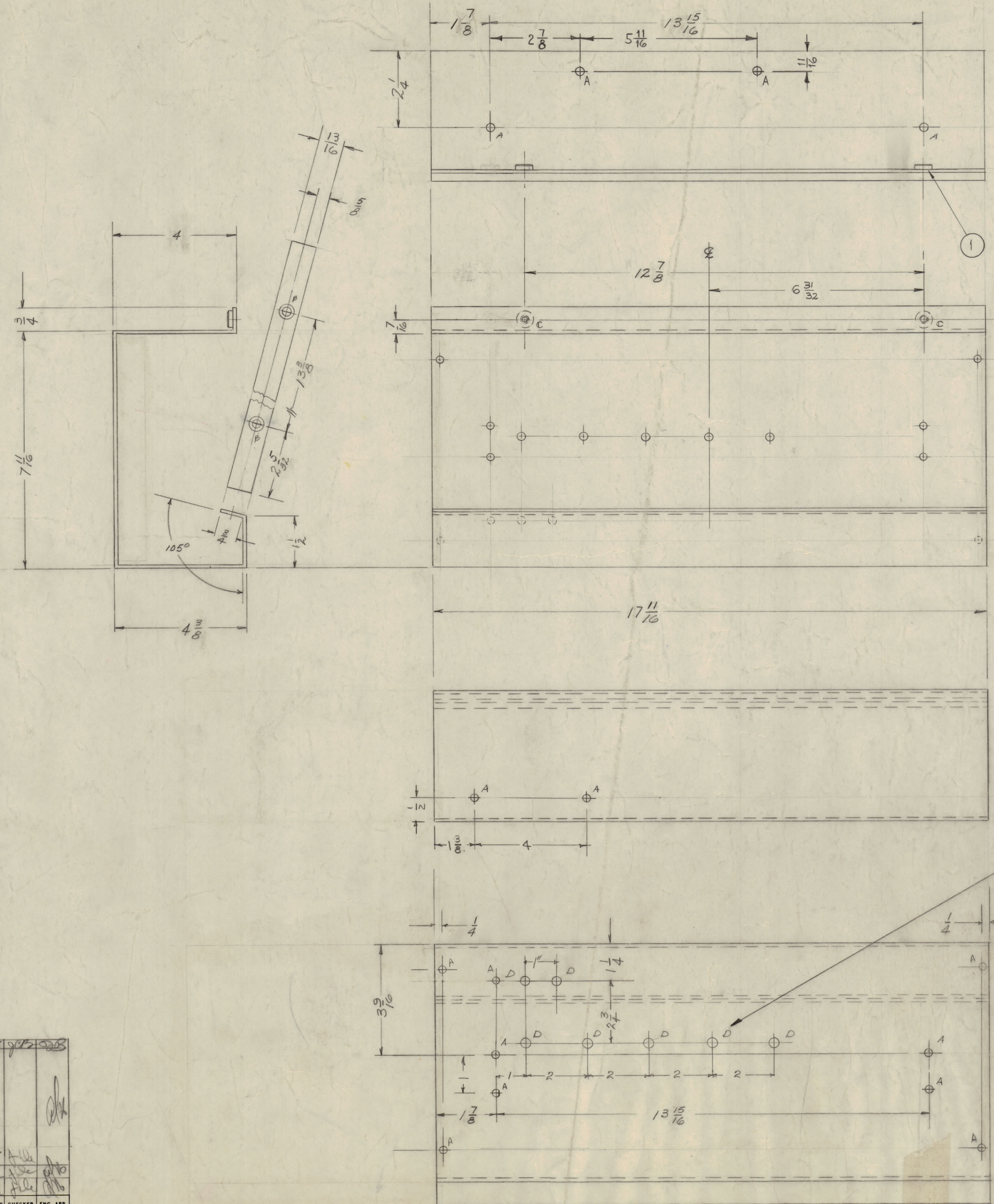


IF IT IS FOUND DESIRABLE TO CHANGE ANY TOLERANCE OR OTHER DETAIL SPECIFIED ON THIS DRAWING NOTIFY THE PURCHASER PROMPTLY.
 MAXIMUM ALLOWABLE TOLERANCES HAVE BEEN DETERMINED AND DEVIATIONS WILL BE CAUSE FOR REJECTION.
 REMOVE ALL BURRS AND SHARP EDGES

NOTICE TO PERSONS RECEIVING THIS DRAWING

THE TECHNICAL MATERIEL CORPORATION claims proprietary right in the material disclosed hereon. This drawing is issued in confidence for engineering information only and may not be reproduced or used to manufacture anything shown hereon without permission from THE TECHNICAL MATERIEL CORPORATION to the user. This drawing is loaned for mutual assistance and is subject to recall at any time.

Property of:
 THE TECHNICAL MATERIEL CORPORATION
 MAMARONECK, NEW YORK



- A - 13/64 (.203) DIA. HOLE 15 REQ.
- B - C'SINK FOR 4-32 F.H.S. 2 REQ.
- C - .221-.224 DIA. HOLE 2 REQ.
- D - 1/4 (.250) DIA. HOLE 7 REQ.

NOTE:
 ALL "D" HOLES DO NOT PAINT 1/2 DIA.
 INSIDE AND OUTSIDE HOLES

D	1	(2) "A" HOLES ADDED	32301	4445	MAK	JTB	2/25
		1 3/8 WAS 1 1/16					
		1 3/8 WAS 1 7/16					
		2 5/32 WAS 2 3/32					
		1 7/8 WAS 1 15/16					
		17 11/16 WAS 17 13/16					
		CHANGED DIM. ADDED NOTE - PAINT SPEC DELETED "C" HOLES	8-21	59			
C	1	ADDED 6 "D"	1286		MAK	JTB	2/25
B	1	DIM. CHG. 2 1/4 WAS 1 13/16					
A	1	4 3/8 WAS 4 1/2, 5 9/16 WAS 5 1/2					
ISSUE	ITEM	CHANGED FROM	DATE	CN. NO.	DRAFTS	CHECKER	ENG. APP.
TOLERANCES		SCALE: 1/8" = 1"					
ALL OTHERS	DEC. DIM. ± 1/16	DRILL, PUNCH, COMMERCIAL STOCK SIZES AND MANUFACTURERS TOLERANCES ARE NOT INCLUDED.					
	ANGULAR DIM. ± 0.5°						

REF - TMC DWG LD-549 (8)

1	SPT-10K			2-4-59
REQ PER UNIT	MODEL	PROJECT NO.	ASS'Y. NO.	DATE
USED ON				

2	1	NT-129 832-4	NUT, ROUND, SWAGE TYPE	
REQ. ITEM	PART NO.	DESCRIPTION		SYMBOL
.064		THE TECHNICAL MATERIEL CORP. MAMARONECK, NEW YORK		
STOCK SIZE		METER BOX, EXCITER FRAME		
ALUMINUM				
MATERIAL		5052-H32		
TYPE & TEMPER		ONE	THREE	
		DRAWN	ELEC. DES. APP.	MECH. DES. APP.
HEAT TREAT. SPEC.		FINAL APPROVAL		
S404 IRIDITE		MS-1551 D		
S115 TMC GREY SMOOTH				
FINISH & SPEC. NO.				

MS-1551 D