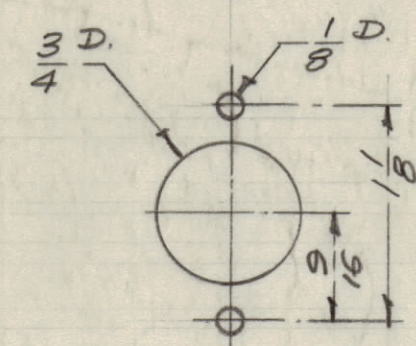


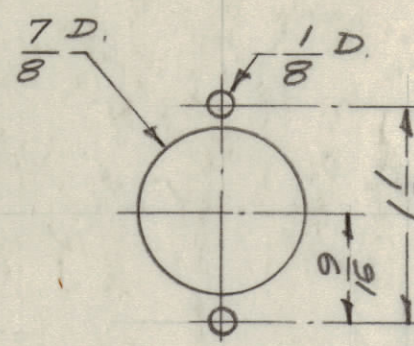
IF IT IS FOUND DESIRABLE TO CHANGE ANY TOLERANCE OR OTHER DETAIL SPECIFIED ON THIS DRAWING NOTIFY THE PURCHASER PROMPTLY.

MAXIMUM ALLOWABLE TOLERANCES HAVE BEEN DETERMINED AND DEVIATIONS WILL BE CAUSE FOR REJECTION. REMOVE ALL BURRS AND SHARP EDGES

- A -  $\frac{1}{8}$  (.125) D. 10 Req.
- B -  $\frac{5}{32}$  (.156) D. 4 Req.
- C -  $\frac{17}{64}$  (.265) D. 2 Req.
- D -  $\frac{9}{32}$  (.281) D. 4 Req.
- E -  $\frac{7}{32}$  (.218) D. 3 Req.
- F -  $\frac{3}{8}$  (.375) D. 5 Req.
- G -  $\frac{13}{16}$  (.812) D. 2 Req.
- H -  $\frac{13}{64}$  (.203) D. 8 Req.
- J - See Detail
- K - See Detail
- L -  $\frac{5}{16}$  (.312) D. 1 Req.

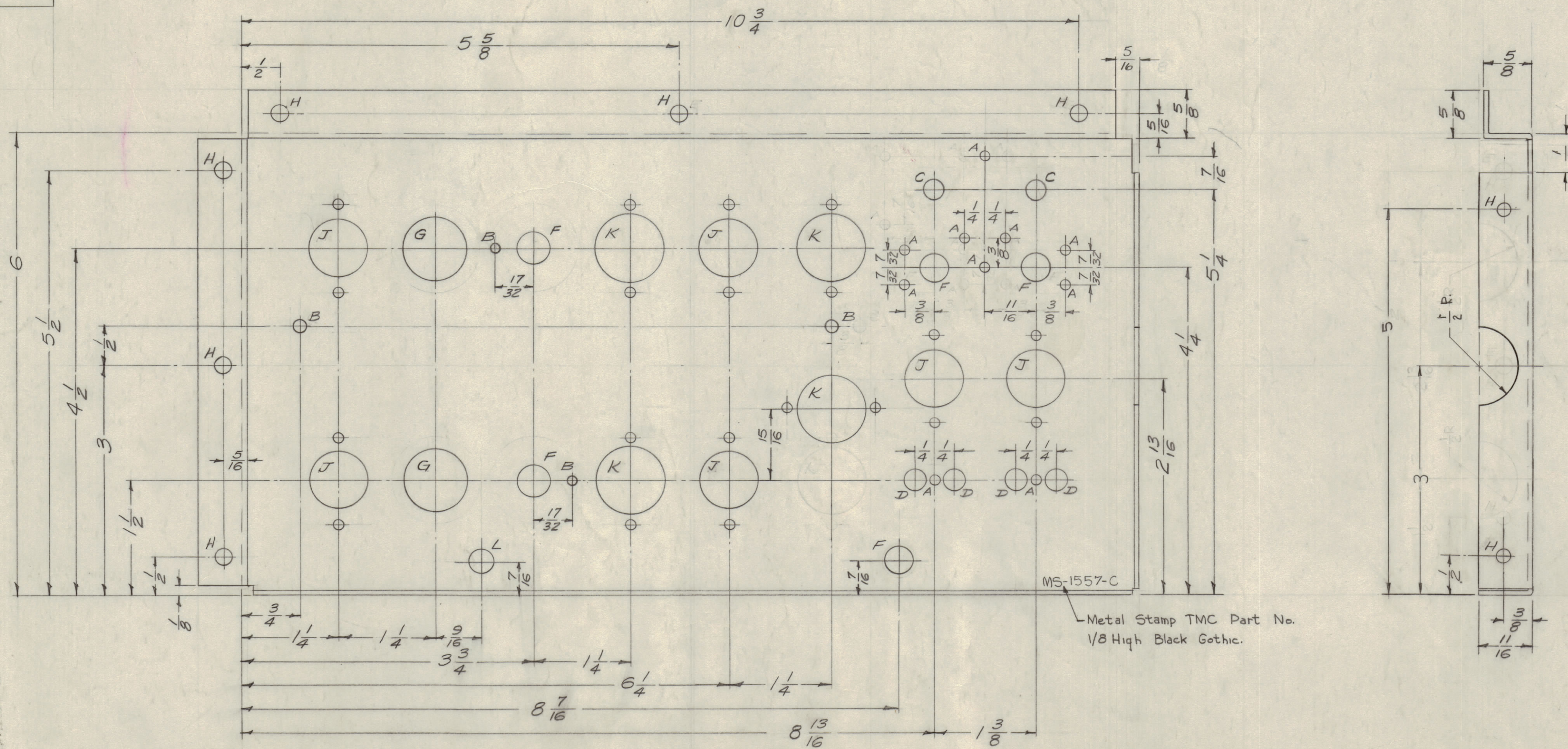
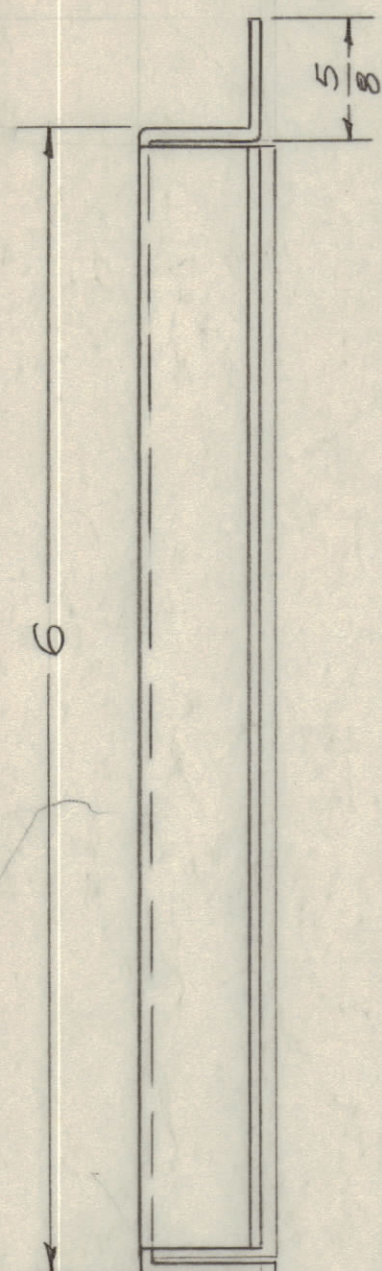


J - 6 Req.

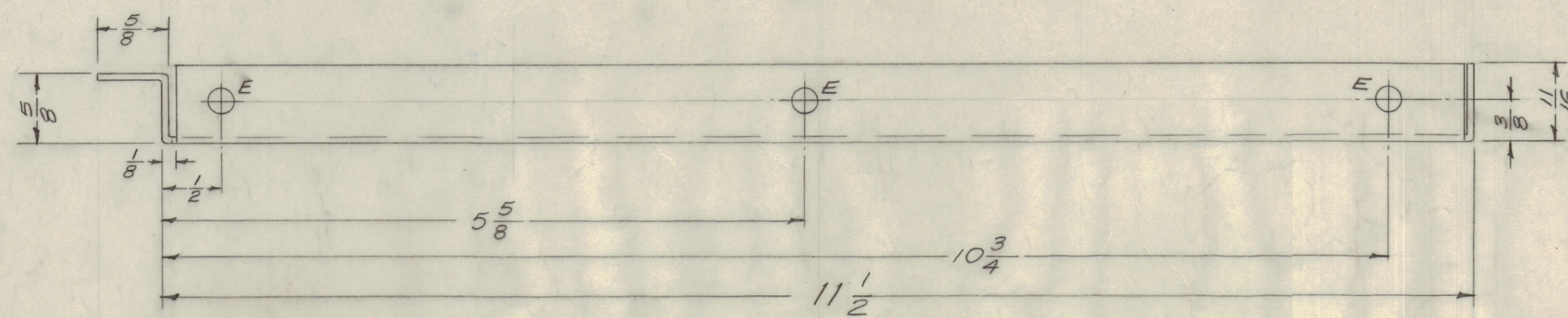


K - 4 Req.

**NOTICE TO PERSONS RECEIVING THIS DRAWING**  
 THE TECHNICAL MATERIEL CORPORATION claims proprietary right in the material disclosed hereon. This drawing is issued in confidence for engineering information only and may not be reproduced or used to manufacture anything shown hereon without permission from THE TECHNICAL MATERIEL CORPORATION to the user. This drawing is loaned for mutual assistance and is subject to recall at any time.  
 Property of:  
 THE TECHNICAL MATERIEL CORPORATION  
 MAMARONECK, NEW YORK



MS-1557-C  
 Metal Stamp TMC Part No. 1/8 High Black Gothic.



D	2	RELOCATED (1) NOTCH; 1/2 DIM ADDED	7-25-62	6947	G.S.	[Signature]
I	1	DELETED (1) NOTCH (RIGHT SIDE)	4-18-62	6614	H.H.	[Signature]
C	1	2 1/2" CUTOUTS ADDED	2-19-59	807	LB	[Signature]
B	1	ONE "K" DETAIL MOVED 1/4" UP ON CHASSIS	2-19-59	804	LB	[Signature]
A	1	ONE "L" HOLE ADDED FOR C. GROMMET (EX-1022)				

ISSUE ITEM CHANGED FROM DATE CH. NO. DRAFTS CHECKER ENG. APP.

\* TOLERANCES SCALE: 1" = 1"

ALL DEC. DIM. ± 1/16  
 OTHERS FRAC. DIM. ± 1/64  
 ANGULAR DIM. ±

DRILL PUNCH COMMERCIAL STOCK SIZES AND MANUFACTURERS TOLERANCES ARE NOT INCLUDED.

Ref: 8LD-508 Lettering

REQ. ITEM	PART NO.	DESCRIPTION	SYMBOL
.064 THK.		THE TECHNICAL MATERIEL CORP.	
STOCK SIZE		MAMARONECK, NEW YORK	
Aluminum		CHASSIS, SUB	
MATERIAL WEIGHT PER FC.		TTG	
5052-H32		24/159/6	[Signature]
TYPE & TEMPER		DRWN	ELEC. DES. APP. MECH. DES. APP.
HEAT TREAT. SPEC.		CHECKED	FINAL APPROVAL
5404 IRIDITE			MS-1557
FINISH & SPEC. NO.			D

1 TTG  
 REQ PER UNIT MODEL PROJECT NO. ASSY. NO. DATE 2-11-59  
 USED ON

MS-1557 D