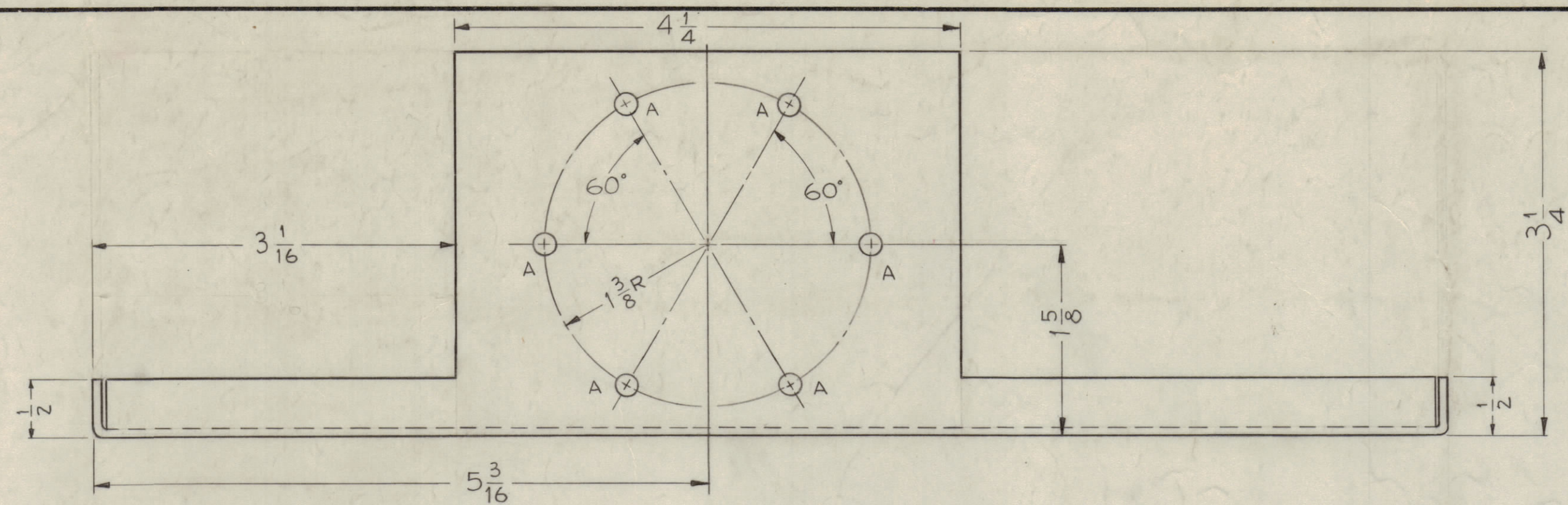
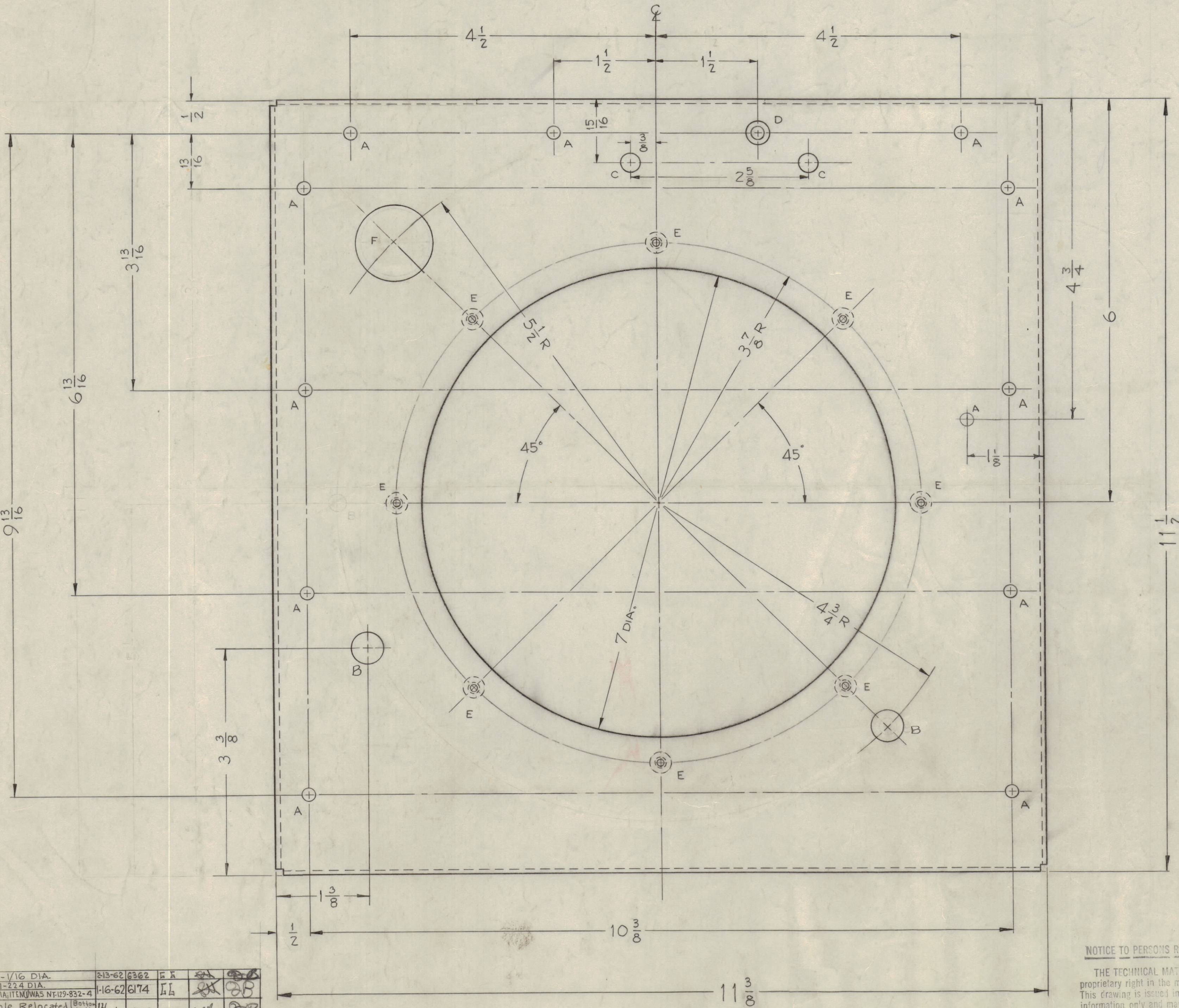
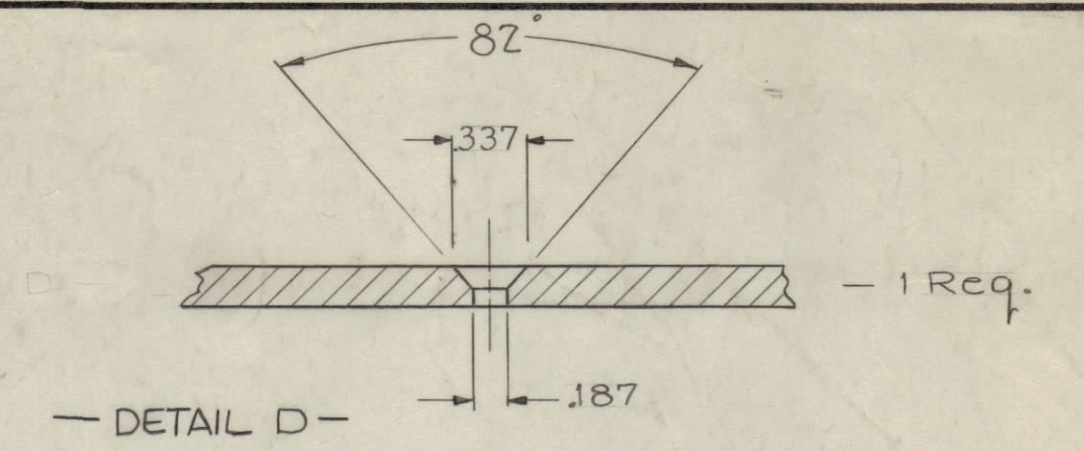


IF IT IS FOUND DESIRABLE TO CHANGE ANY TOLERANCE OR OTHER DETAIL SPECIFIED ON THIS DRAWING NOTIFY THE PURCHASER PROMPTLY.  
 MAXIMUM ALLOWABLE TOLERANCES HAVE BEEN DETERMINED AND DEVIATIONS WILL BE CAUSE FOR REJECTION. REMOVE ALL BURRS AND SHARP EDGES



A ~ 3/16 (.187) DIA.  
 B ~ 1/2 (1.50) DIA.  
 C ~ 9/32 (.281) DIA.  
 D ~ SEE DETAIL  
 E ~ .191-.194 DIA  
 F ~ 1/8 DIA.

17 Req.  
 2 Req.  
 2 Req.  
 1 Req.  
 8 Req.  
 1 Req.



1 Mount in "E" Holes.

FINISH:  
 SILVER PLATE .0005 AND  
 CLEAR IRIDITE

ISSUE	ITEM	CHANGED FROM	DATE	GN. NO.	DRAFTS	CHECKER	ENG. APP.
E	1	F WAS 1-1/16 DIA.	8-13-62	6362	EA		
D	2	G WAS .211-.224 DIA.	1-16-62	6174	EL		
C	1	H WAS 1 DIA. ITEM WAS NE19-832-4	11/1/60	3770	RU		
B	1	DET. E' CHANGED. NT-129-832-4 WAS SM107-23	12-2-59	1608	SP		
A	1	"A" HOLE ADDED	3/4/59				

NOTICE TO PERSONS RECEIVING THIS DRAWING  
 THE TECHNICAL MATERIEL CORPORATION claims proprietary right in the material disclosed hereon. This drawing is issued in confidence for engineering information only and may not be reproduced or used to manufacture anything shown hereon without permission from THE TECHNICAL MATERIEL CORPORATION to the user. This drawing is loaned for mutual assistance and is subject to recall at any time.  
 Property of:  
 THE TECHNICAL MATERIEL CORPORATION  
 MAMARONECK, NEW YORK

REQ. ITEM	PART NO.	DESCRIPTION	SYMBOL
8	1	NT-129-632-4 NUT, ROUND, SWAGE TYPE	E
STOCK SIZE			
.064			
ALUMINUM			
MATERIAL WEIGHT PER PC.			
3052-H-32			
TYPE & TEMPER			
DRAWN			
ELEC. DES. APP.			
MECH. DES. APP.			
HEAT TREAT. SPEC.			
SEE NOTE			
FINISH & SPEC. NO.			

REQ PER UNIT	MODEL	PROJECT NO.	ASSY. NO.	DATE
1	GPT 10K	4X-137		2-12-59

MS-1564