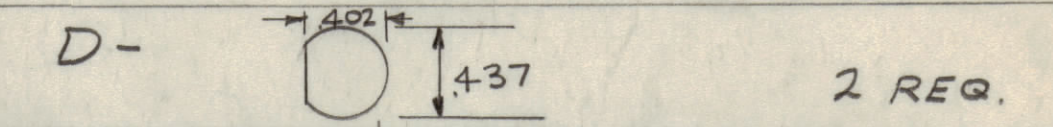
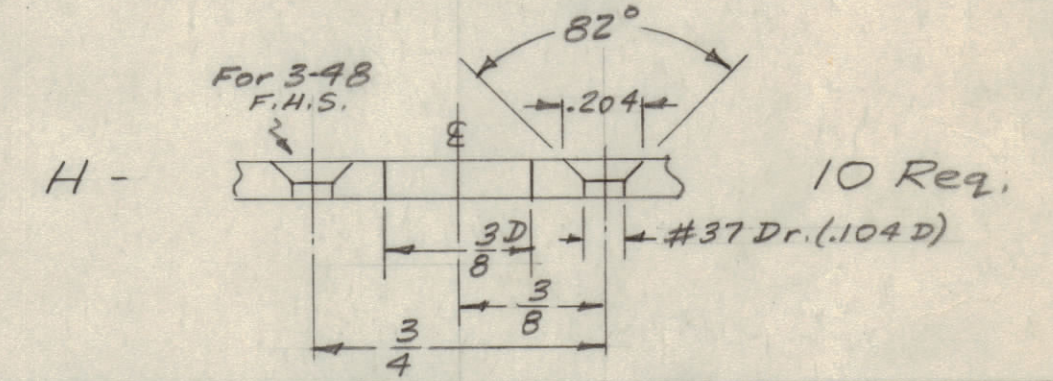
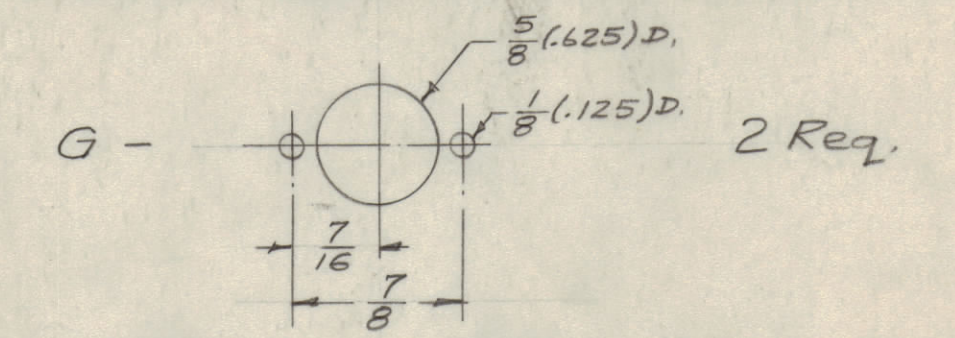
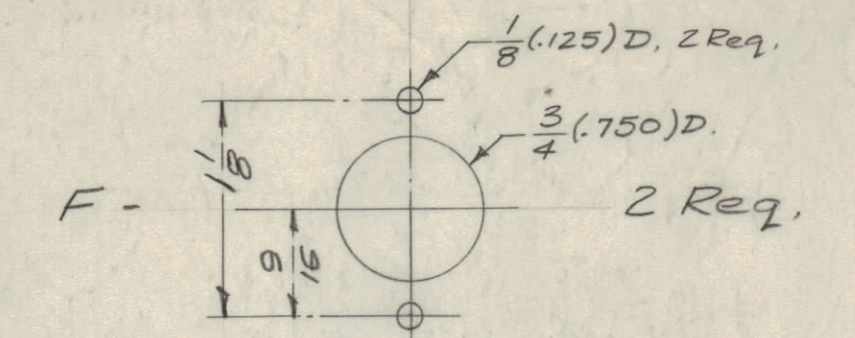
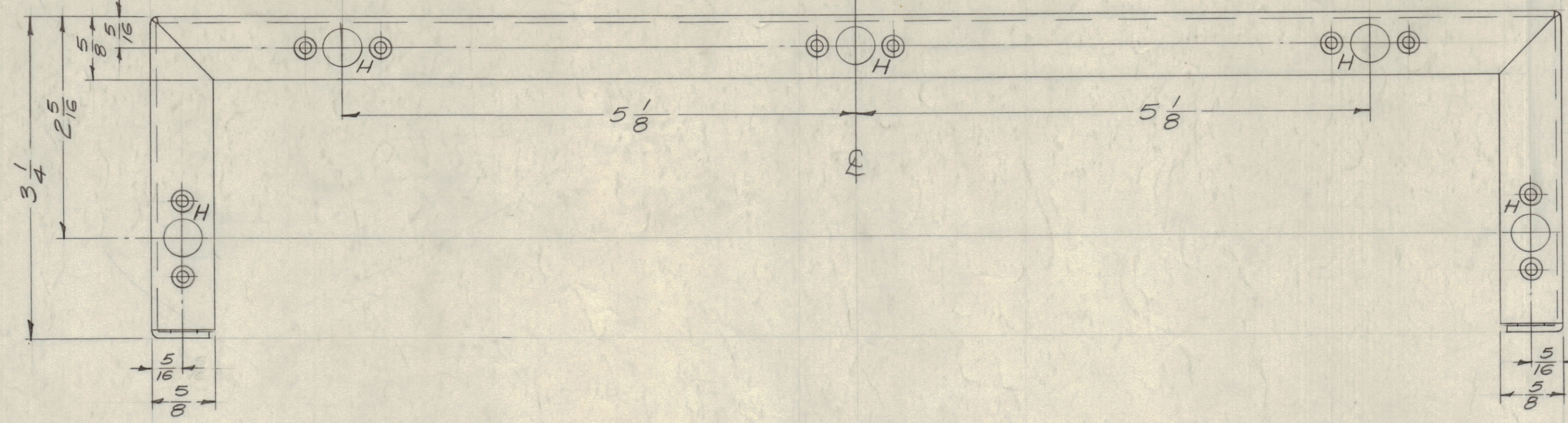
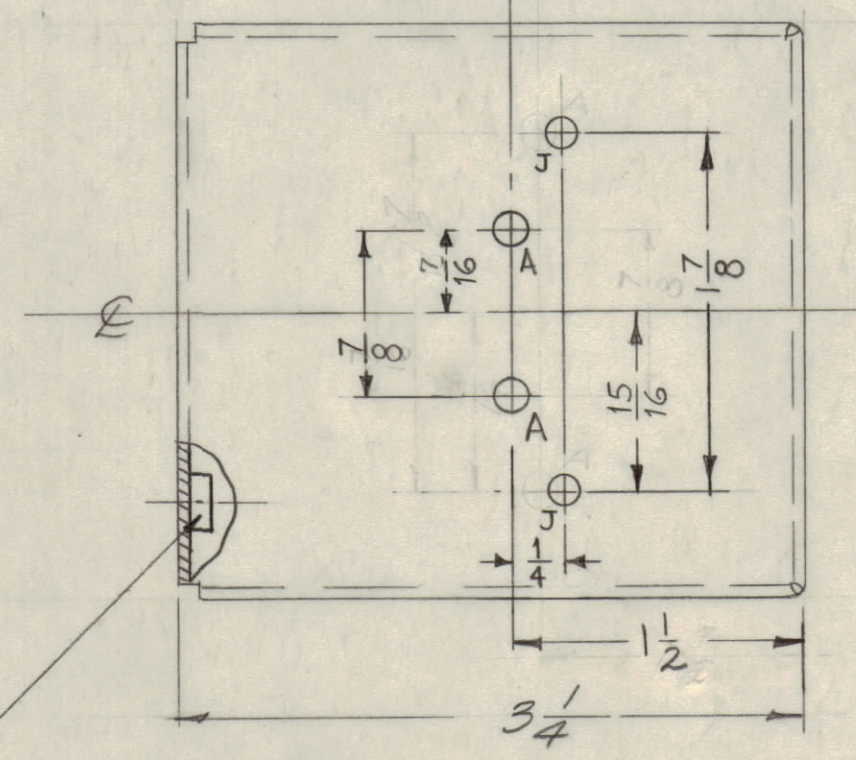
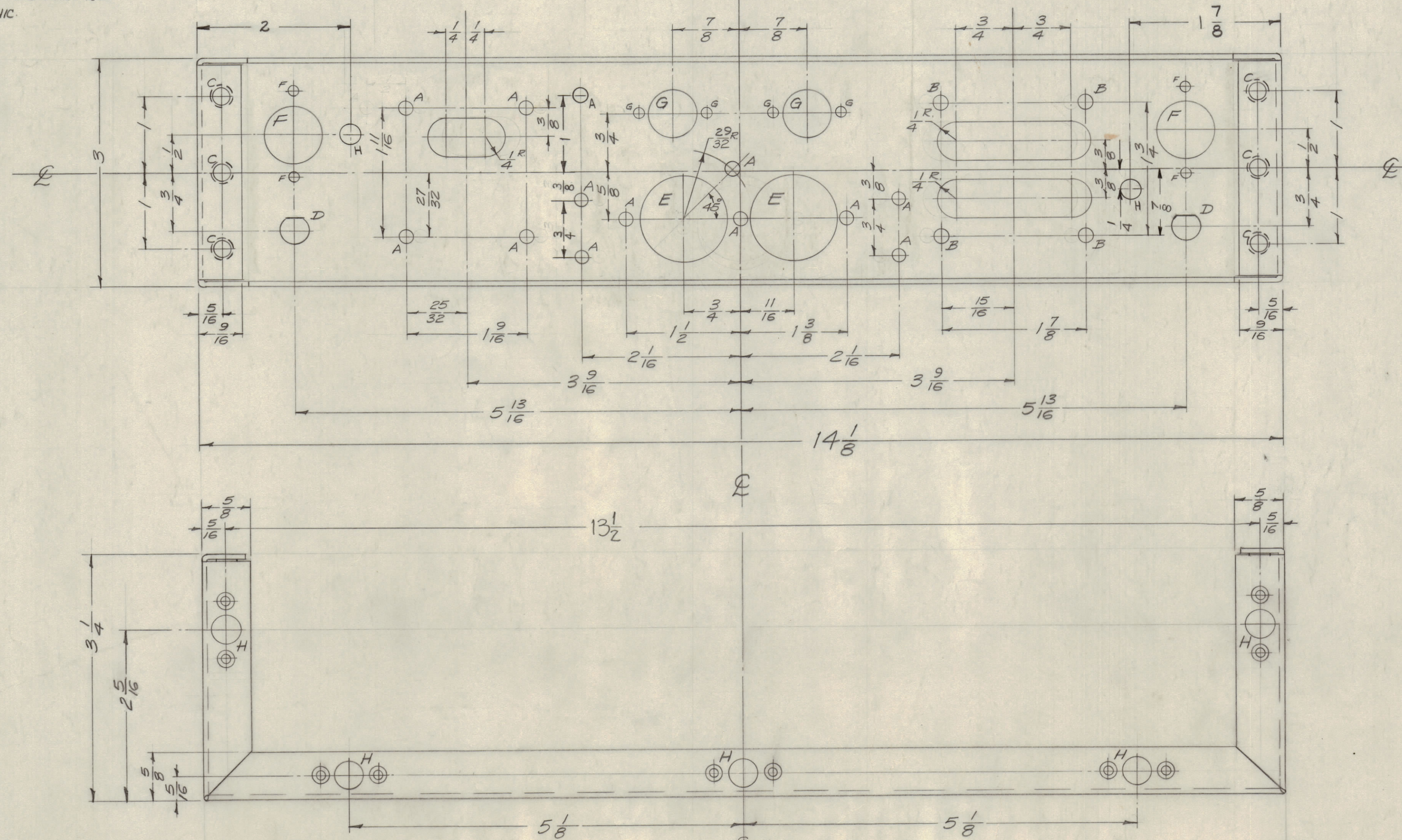
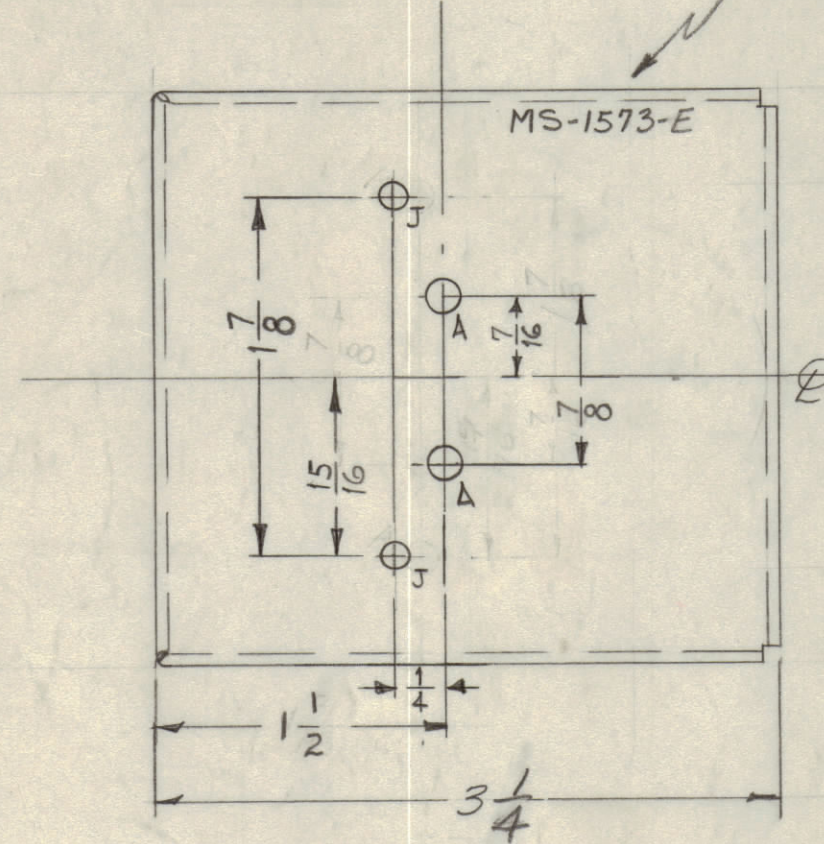


IF IT IS FOUND DESIRABLE TO CHANGE ANY TOLERANCE OR OTHER DETAIL SPECIFIED ON THIS DRAWING NOTIFY THE PURCHASER PROMPTLY.
 MAXIMUM ALLOWABLE TOLERANCES HAVE BEEN DETERMINED AND DEVIATIONS WILL BE CAUSE FOR REJECTION. REMOVE ALL BURRS AND SHARP EDGES

- A - $\frac{11}{64}$ (.171) D. 16 Req.
- B - $\frac{3}{16}$ (.187) D. 4 Req.
- C - .224-.221 D. 6 Req.
- D - SEE DETAIL 2 Req.
- E - $1\frac{1}{8}$ (1.125) D. 2 Req.
- H - $\frac{1}{4}$ (.25) D. 2 Req.
- J - $\frac{9}{64}$ DIA. 4 Req.



METAL STAMP TMC PART NO. 1/8 HIGH, GOTHIC.



MS-1573 E

NOTICE TO PERSONS RECEIVING THIS DRAWING

THE TECHNICAL MATERIEL CORPORATION claims proprietary right in the material disclosed herein. This drawing is issued in confidence for engineering information only and may not be reproduced or used to manufacture anything shown herein without permission from THE TECHNICAL MATERIEL CORPORATION to the user. This drawing is loaned for mutual assistance and is subject to recall at any time.

Property of:
 THE TECHNICAL MATERIEL CORPORATION
 MAMARONECK, NEW YORK

E	1	ON LEFT SIDE VIEW DIM 7/16 WAS 15/16 BETWEEN 'A' HOLES	11-9-59	7610	RF	RF	RF
D	2	ITEM (I) ADDED	10-12-59	7423	RF	RF	RF
C	2	(4) 'J' HOLES WERE 9/32 DIA.	5-9-59	4852	RF	RF	RF
C	1	(1) 'A' HOLE RELOCATED			RF	RF	RF
B	1	ADDED 'D' HOLES ADDED 1/4 + 1/8 WAS 2"	4-4-60	1980	RF	RF	RF
A	1	'A' HOLES ON EACH END RELOCATED TWO 'H' HOLES ADDED	11-3-59		P.I.	RF	RF
ISSUE	ITEM	CHANGED FROM	DATE	CN. NO.	DRAFTS	CHECKER	ENG. APP.
TOLERANCES		SCALE: FULL - DO NOT SCALE					
ALL OTHERS	DEC. DIM. ± 1/64		DRILL PUNCH, COMMERCIAL STOCK SIZES AND MANUFACTURERS TOLERANCES ARE NOT INCLUDED.				

1	SLM-2	LD-641 (8)	11-13-59
1	SLM	P/O GPT-10K	2/16/59
REQ PER UNIT	MODEL	PROJECT NO.	DATE
		LD'S REF. NO.	
		USED ON	

6	1	NT-129-832-4	NUT, ROUND SWAGE TYPE
REQ. ITEM	PART NO.	DESCRIPTION	SYMBOL
	.064 THK.	THE TECHNICAL MATERIEL CORP. MAMARONECK, NEW YORK	
STOCK SIZE		CHASSIS	
MATERIAL	WEIGHT PER PC.	SIDE BAND LEVEL MONITOR	
5052-H32			
TYPE & TEMPER	16/16/59	DRAWN	ELEC. DES. APP.
		CHECKED	MECH. DES. APP.
HEAT TREAT. SPEC.	5404 Iridite	FINAL APPROVAL	
		MS-1573 E	