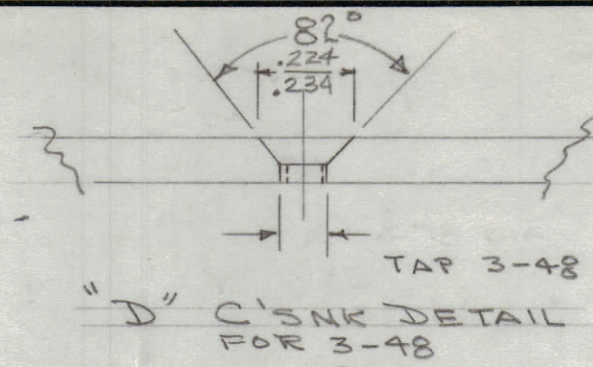
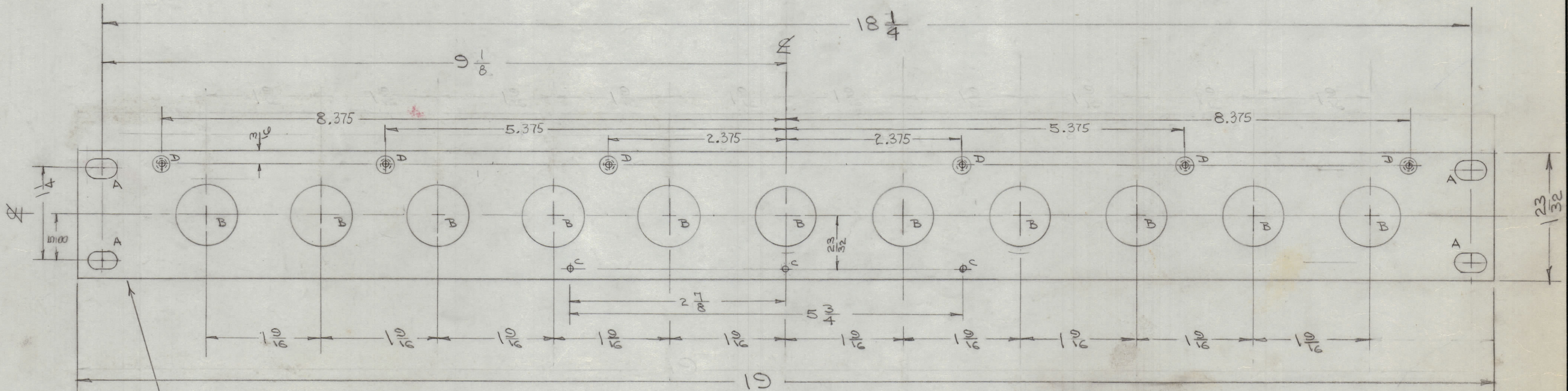


IF IT IS FOUND DESIRABLE TO CHANGE ANY TOLERANCE OR OTHER DETAIL SPECIFIED ON THIS DRAWING NOTIFY THE PURCHASER PROMPTLY.

MAXIMUM ALLOWABLE TOLERANCES HAVE BEEN DETERMINED AND DEVIATIONS WILL BE CAUSE FOR REJECTION. REMOVE ALL BURRS AND SHARP EDGES.



- A - 1/4 X 29/64 SLOTS 4 REQ.
- B - 13/16 DIA. 11 REQ.
- C - #50 DRILL (.070) 3 REQ.
- D - DRILL & TAP 3-48 (SEE DETAIL) 6 REQ.



FRONT VIEW SHOWN

MARK TMC PART NO 1/0 HIGH GOTHIC W/LATEST REVISION LETTER ON REAR OF PANEL.

MS-1657 B

FINISH FRONT & EDGES ONLY
 S-404 - YELLOW IRIDITE
 S-114 - ZINC CHROMATE PRIMER
 S-115 - SMOOTH GRAY ENAMEL

NOTES:
 LATERAL BOW MUST BE KEPT TO .031 TOL
 HOLES MUST BE DRILLED
 MILL ALL EDGES

NOTICE TO PERSONS RECEIVING THIS DRAWING

THE TECHNICAL MATERIEL CORPORATION claims proprietary right in the material disclosed herein. This drawing is issued in confidence for engineering information only and may not be reproduced or used to manufacture anything shown hereon without permission from THE TECHNICAL MATERIEL CORPORATION to the user. This drawing is loaned for mutual assistance and is subject to recall at any time.

Property of:
 THE TECHNICAL MATERIEL CORPORATION
 MAMARONECK, NEW YORK

ISSUE	ITEM	CHANGED FROM	DATE	CH. NO.	DRAFTS	CHECKER	ENG. APP.
B		DIM & HOLE CHART CLAR. TMC PT NO 1/0 DDED	10.4.66	16968	WHD	OCF	
A	1	S-404 YEL. IRIDITE WAS S-101 CAUSTIC DIP	2/10/59	1001	HB		EMN

FORM-110

REQ. PER UNIT	MODEL	PROJECT NO.	ASSY. NO.	DATE
1	SPP-1			

REQ. ITEM	PART NO.	DESCRIPTION	SYMBOL
	3/16	THE TECHNICAL MATERIEL CORP. MAMARONECK, NEW YORK	
	ALUMINUM	MACHINING, FRONT PANEL	
	2024-T3	SPP-1	
	TYPE & TEMPER	DRAWN	ELEC. DES. APP. MECH. DES. APP.
	HEAT TREAT. SPEC.	CHECKED	FINAL APPROVAL
	FINISH & SPEC. NO.	SEE NOTE	MS-1657 B

TRIANGLE LITHOPRINT CO., INC. 23203