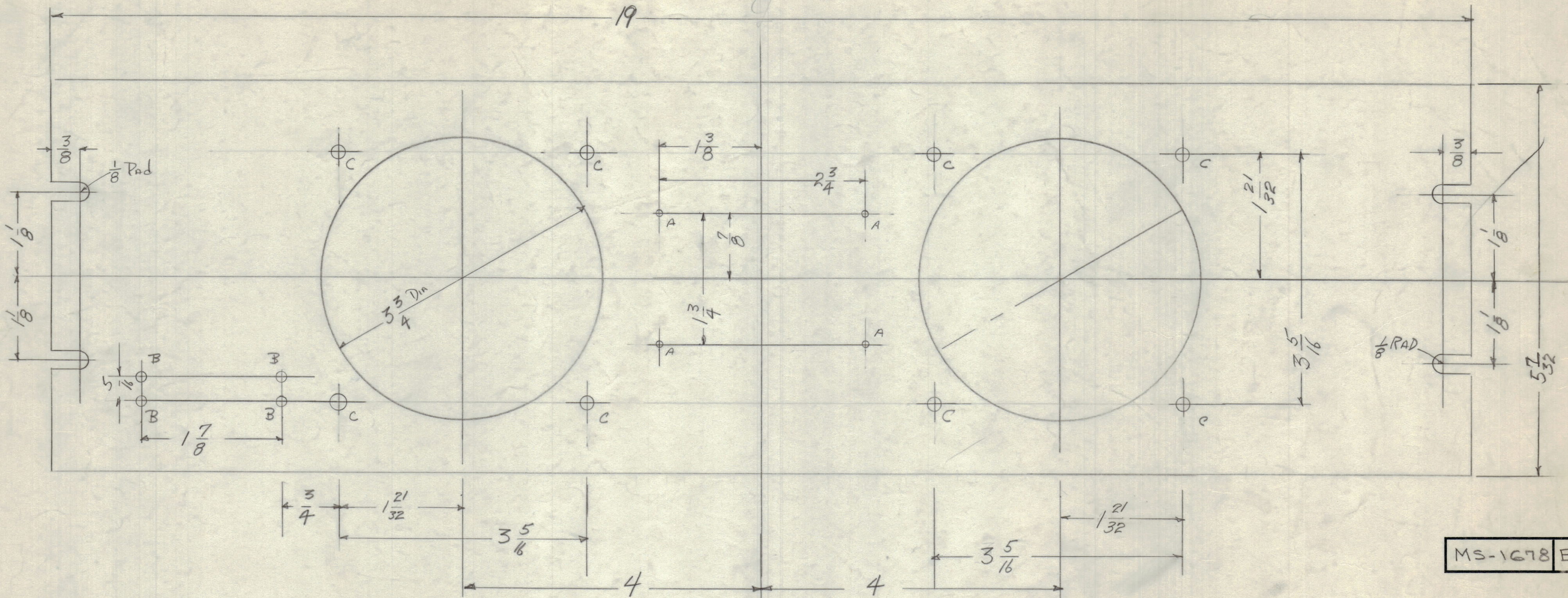


IF IT IS FOUND DESIRABLE TO CHANGE ANY TOLERANCE OR OTHER DETAIL SPECIFIED ON THIS DRAWING NOTIFY THE PURCHASER PROMPTLY.

MAXIMUM ALLOWABLE TOLERANCES HAVE BEEN DETERMINED AND DEVIATIONS WILL BE CAUSE FOR REJECTION. REMOVE ALL BURRS AND SHARP EDGES.



MS-1678 B

- A - #47 Drill. 4 holes
- B - 1/8 (.125) 4 holes
- C - 1/64 (.0156) 8 holes

- machining
1. Lateral Bow of Panel must kept to .031 Tol.
 2. Mill All Edges
 3. holes must be Drilled
 4. Panel must be free of All machining marks Gouges + scratches.

- Finish
1. S-404 YELLOW IRIDITE
 2. S114 Zinc Chromate
 3. S115 TMC Smooth GRAY ENAMEL
- FRONT + Leading Edges only.

REF: LD-1362

UNLESS OTHERWISE SPECIFIED DIMENSIONS ARE IN INCHES AND INCLUDE CHEMICALLY APPLIED OR PLATED FINISHES

DECIMALS	FRACTIONS
.X ± .03	± 1/64
.XX ± .01	ANGLES
.XXX ± .005	± 0° 30'

TOLERANCES

NOTICE TO PERSONS RECEIVING THIS DRAWING

THE TECHNICAL MATERIEL CORPORATION claims proprietary right in the material disclosed hereon. This drawing is issued in confidence for engineering information only and may not be reproduced or used to manufacture anything shown hereon without permission from THE TECHNICAL MATERIEL CORPORATION to the user. This drawing is loaned for mutual assistance and is subject to recall at any time.

B	1	REF: LD-1362 ADDED	10-4-63	10148	EMN	EMN
A	1	S-404 YEL IRIDITE WAS	12/19/59	1001	EMN	EMN
		S-101 CAUSTIC DIP				
ISSUE	ITEM	CHANGED FROM	DATE	CH. NO.	DRAFTS	CHECKER
TOLERANCES		SCALE:				
ALL OTHERS	DEC. DIM. ±	DRILL, PUNCH, COMMERCIAL STOCK SIZES AND MANUFACTURERS TOLERANCES ARE NOT INCLUDED.				
	FRAC. DIM. ±					
	ANGULAR DIM. ±					

Property of:
THE TECHNICAL MATERIEL CORPORATION
MAMARONECK, NEW YORK

1	LSP-6			
REQ. PER UNIT	MODEL	PROJECT NO.	ASSY. NO.	DATE
	USED ON			

REQ.	ITEM	PART NO.	DESCRIPTION	SYMBOL
		3/16 Thick	THE TECHNICAL MATERIEL CORP. MAMARONECK, NEW YORK	
		ALUM.	PANEL	
		MATERIAL	WEIGHT PER PC.	LSP-6
		2024-T3		
		TYPE & TEMPER	DRAWN	ELEC. DES. APP. MECH. DES. APP.
		HEAT TREAT. SPEC.	CHECKED	FINAL APPROVAL
		See Note		MS-1678 B
		FINISH & SPEC. NO.		