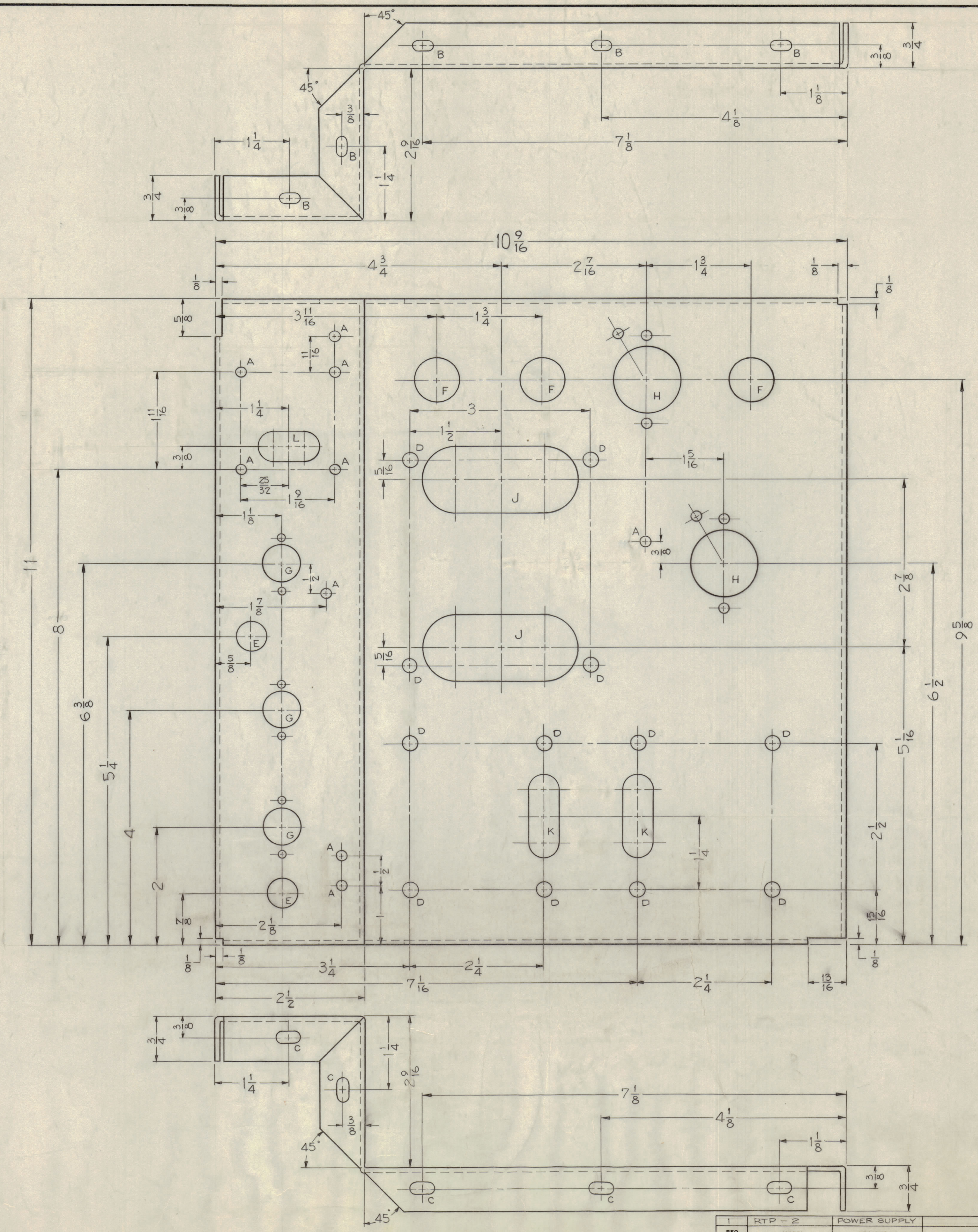
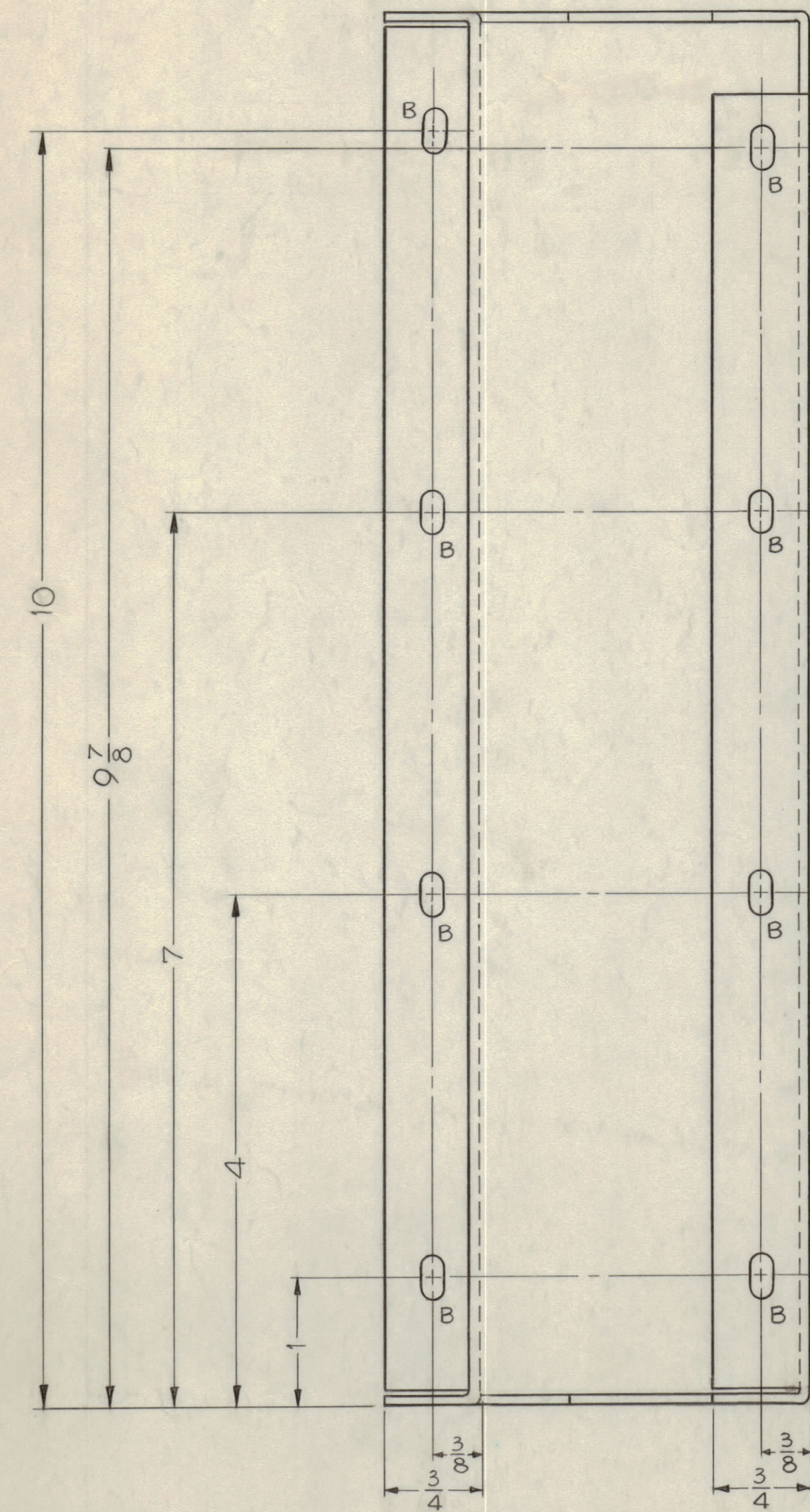
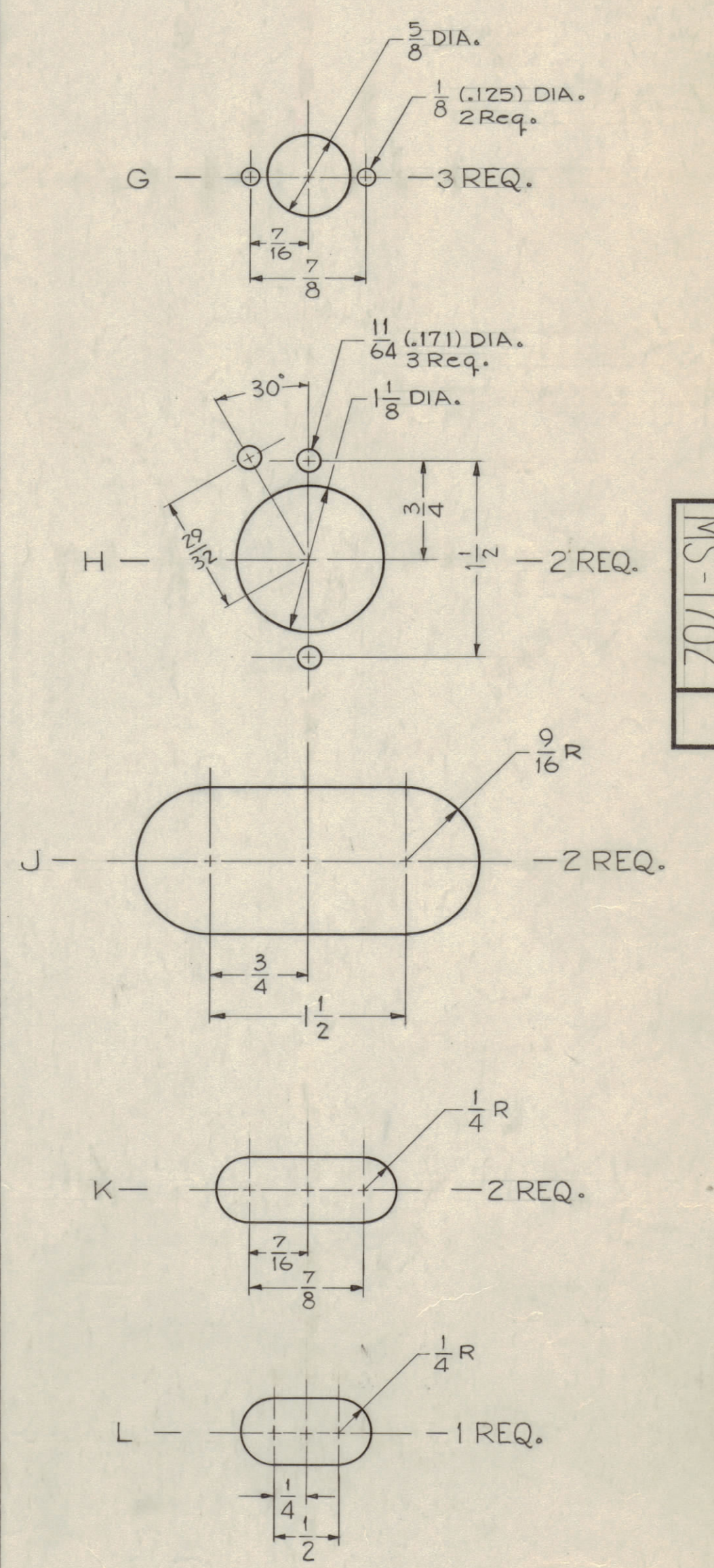


IF IT IS FOUND DESIRABLE TO CHANGE ANY TOLERANCE OR OTHER DETAIL SPECIFIED ON THIS DRAWING NOTIFY THE PURCHASER PROMPTLY.
 MAXIMUM ALLOWABLE TOLERANCES HAVE BEEN DETERMINED AND DEVIATIONS WILL BE CAUSE FOR REJECTION. REMOVE ALL BURRS AND SHARP EDGES.

NOTICE TO PERSONS RECEIVING THIS DRAWING
 THE TECHNICAL MATERIEL CORPORATION claims proprietary right in the material disclosed herein. This drawing is issued in confidence for engineering information only and may not be reproduced or used to manufacture anything shown hereon without permission from THE TECHNICAL MATERIEL CORPORATION to the user. This drawing is loaned for mutual assistance and is subject to recall at any time.
 Property of:
 THE TECHNICAL MATERIEL CORPORATION
 MAMARONECK, NEW YORK



- A ~ 11/64 (.171) DIA. 9 Req.
- B ~ 11/64 X 11/32 SLOT 13 Req.
- C ~ 13/64 X 13/32 SLOT 5 Req.
- D ~ 1/4 (.250) DIA. 12 Req.
- E ~ 1/2 (.500) DIA. 2 Req.
- F ~ 3/4 (.750) DIA. 3 Req.



MS-1702

ISSUE	ITEM	CHANGED FROM	DATE	CN. NO.	DRAFTS	CHECKER	ENG. APP.
TOLERANCES							
ALL		DEC. DIM. ±		SCALE:			
OTHERS		FRAC. DIM. ±		DRILL PUNCH COMMERCIAL STOCK			
		ANGULAR DIM. ±		SIZES AND MANUFACTURERS			
				TOLERANCES ARE NOT INCLUDED.			

1	RTP - 2	POWER SUPPLY	3-31-59
REQ PER UNIT	MODEL	PROJECT NO.	DATE
		ASSY. NO.	USED ON

REF - TMC DWG NO. LD - 520			
REQ. ITEM	PART NO.	DESCRIPTION	SYMBOL
.081		THE TECHNICAL MATERIEL CORP.	
STOCK SIZE		MAMARONECK, NEW YORK	
ALUMINUM		CHASSIS, SUB	
MATERIAL		WEIGHT PER PC.	
5052 - H-32		JOHN C. BIELE	
TYPE & TEMPER		DRAWN	
HEAT TREAT. SPEC.		CHECKED	
S-404 IRIDITE		FINAL APPROVAL	
FINISH & SPEC. NO.		MS-1702	