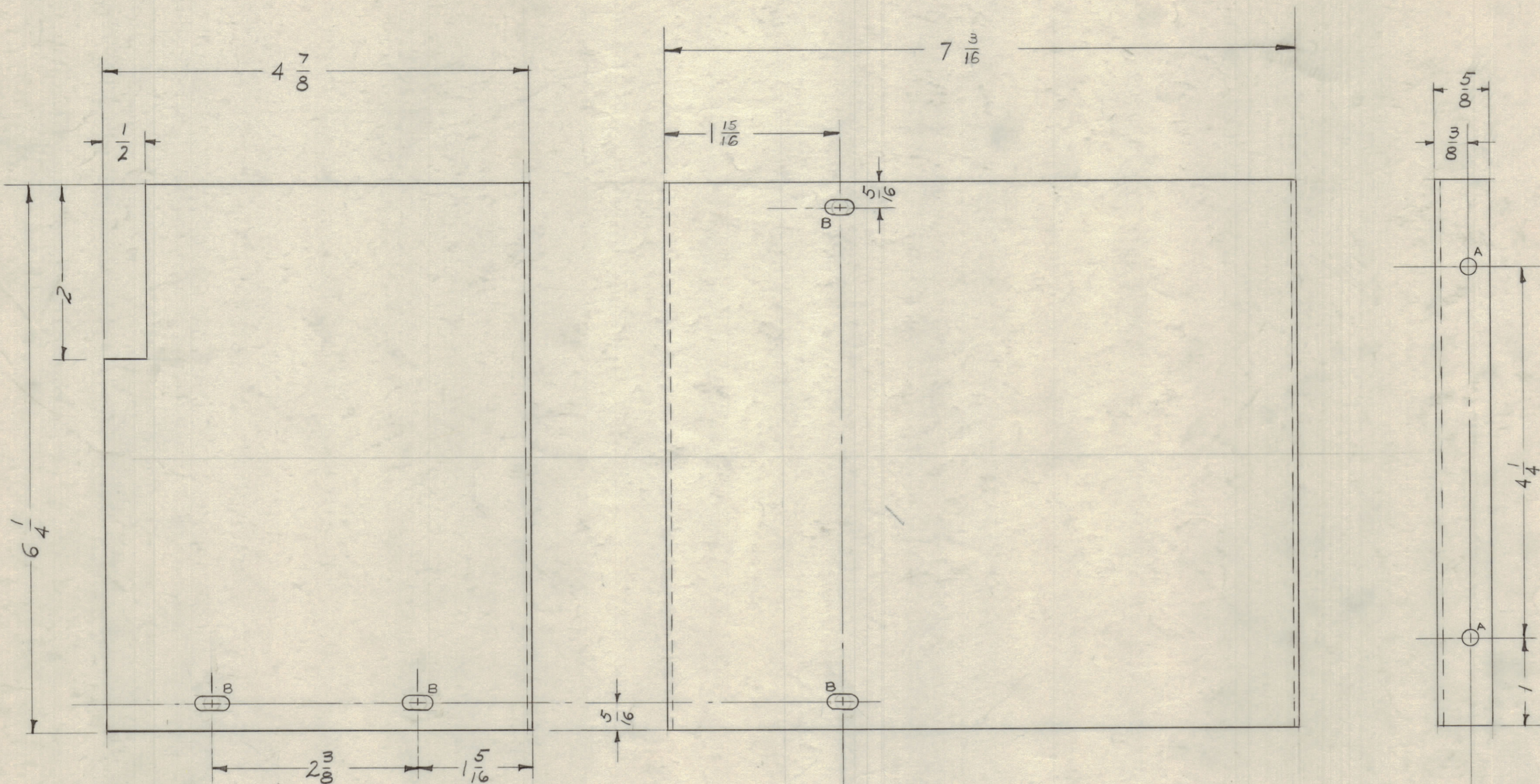


IF IT IS FOUND DESIRABLE TO CHANGE ANY TOLERANCE OR OTHER DETAIL SPECIFIED ON THIS DRAWING NOTIFY THE PURCHASER PROMPTLY.

MAXIMUM ALLOWABLE TOLERANCES HAVE BEEN DETERMINED AND DEVIATIONS WILL BE CAUSE FOR REJECTION. REMOVE ALL BURRS AND SHARP EDGES.

A - (.171) DIA. HOLES 2
 B - 1/64 x 1/32 - SLOTS 4



MS-1711 B

NOTE:
 GPT-750-1 S-101 - S107
 GPT-750-2 S-404

UNLESS OTHERWISE SPECIFIED DIMENSIONS ARE IN INCHES AND INCLUDE CHEMICALLY APPLIED OR PLATED FINISHES

DECIMALS	FRACTIONS
X ± .05	± 1/64
.XX ± .01	ANGLES ± 0° 30'
.XXX ± .005	

2-66

NOTICE TO PERSONS RECEIVING THIS DRAWING

THE TECHNICAL MATERIEL CORPORATION claims proprietary right in the material disclosed hereon. This drawing is issued in confidence for engineering information only and may not be reproduced or used to manufacture anything shown hereon without permission from THE TECHNICAL MATERIEL CORPORATION to the user. This drawing is loaned for mutual assistance and is subject to recall at any time.

Property of:

THE TECHNICAL MATERIEL CORPORATION
 MAMARONECK, NEW YORK

ISSUE	ITEM	CHANGED FROM	DATE	CH. NO.	DRAFTS	CHECKER	ENG. APP.
B	1	DIM 15/16 WAS 2; 7 3/16 WAS 7 1/4	2-2-62	6316	G.S.		
A	1	(4) B SLOTS WERE A HOLES	11-15-60				

TOLERANCES		SCALE:
ALL OTHERS	DEC. DIM. ± FRAC. DIM. ± ANGULAR DIM. ±	DRILL, PUNCH, COMMERCIAL STOCK SIZES AND MANUFACTURERS TOLERANCES ARE NOT INCLUDED.
	1/64	

REQ. PER UNIT	MODEL	PROJECT NO.	ASSY. NO.	DATE
	RTF-2	GPT-750-2		
	RTF-1	GPT-750-1		

REQ. ITEM	PART NO.	DESCRIPTION	SYMBOL
	051	THE TECHNICAL MATERIEL CORP. MAMARONECK, NEW YORK	
	ALUMINUM	COVER, FAN HOUSING	
	5052 - H 32		
		TORILLO 4-14-59	
		DRAWN	ELEC. DES. APP. MECH. DES. APP.
		CHECKED	FINAL APPROVAL
		SEE NOTE	
		FINISH & SPEC. NO.	MS-1711 B