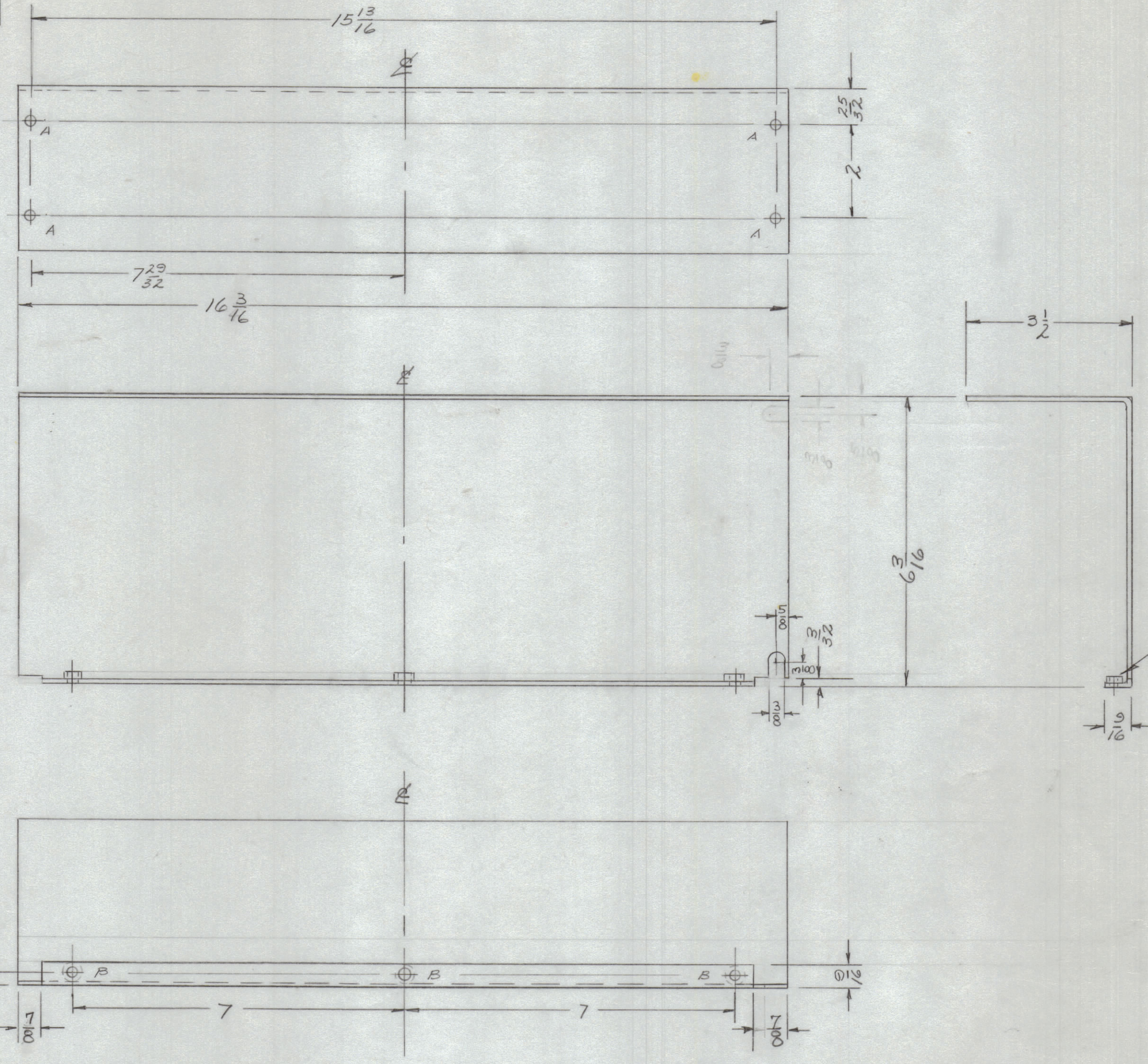


IF IT IS FOUND DESIRABLE TO CHANGE ANY TOLERANCE OR OTHER DETAIL SPECIFIED ON THIS DRAWING NOTIFY THE PURCHASER PROMPTLY.

MAXIMUM ALLOWABLE TOLERANCES HAVE BEEN DETERMINED AND DEVIATIONS WILL BE CAUSE FOR REJECTION. REMOVE ALL BURRS AND SHARP EDGES.



A- $\frac{13}{64}$ (.203) DIA. HOLE 4 REQ.
 B- .191-.194 DIA. HOLE 3 REQ.
 (For NT-129-632-4)

NT-129-632-4
3 REQ.

M5-1731 B

INSIDE BENDS $\frac{1}{16}$ RADIUS

UNLESS OTHERWISE SPECIFIED DIMENSIONS ARE IN INCHES AND INCLUDE CHEMICALLY APPLIED OR PLATED FINISHES

DECIMALS	FRACTIONS
.X ± .05	± 1/64
.XX ± .01	ANGLES ± 0° 30'
.XXX ± .005	

TOLERANCES

CUT HERE GUARANTEED 2-46

NOTICE TO PERSONS RECEIVING THIS DRAWING

THE TECHNICAL MATERIEL CORPORATION claims proprietary right in the material disclosed hereon. This drawing is issued in confidence for engineering information only and may not be reproduced or used to manufacture anything shown hereon without permission from THE TECHNICAL MATERIEL CORPORATION to the user. This drawing is loaned for mutual assistance and is subject to recall at any time.

Property of:

THE TECHNICAL MATERIEL CORPORATION
MAMARONECK, NEW YORK

ISSUE	ITEM	CHANGED FROM	DATE	CH. NO.	DRAFTS	CHECKER	ENG. APP.
B	1	S-404 YEL IRIDITE WAS	12/10/59	1001	AB		AMN
A	2	SLOT CAUSTIC DIP	5/1/59	943			
		SLOT RELOCATED					
		7/8 CUTOUT WAS 5/8					

REQ. ITEM	PART NO.	DESCRIPTION	SYMBOL
	.064 THICK	THE TECHNICAL MATERIEL CORP.	
	STOCK SIZE	MAMARONECK, NEW YORK	
	ALUMINUM CP	COVER, SPEAKER, PROTECTIVE	
	MATERIAL	WEIGHT PER PC.	
	5052-H32		
	TYPE & TEMPER	DRAWN	ELEC. DES. APP. MECH. DES. APP.
	CP		
	HEAT TREAT. SPEC.	CHECKED	FINAL APPROVAL
	S-404 YEL. IRIDITE		
	FINISH & SPEC. NO.	M5-1731	B

REQ. PER UNIT	MODEL	PROJECT NO.	ASSY. NO.	DATE
1	UTD-2	RAK-8		4-21-59
	USED ON			