

IF IT IS FOUND DESIRABLE TO CHANGE ANY TOLERANCE OR OTHER DETAIL SPECIFIED ON THIS DRAWING NOTIFY THE PURCHASER PROMPTLY.

ALLOWABLE TOLERANCES HAVE BEEN DETERMINED AND DEVIATIONS WILL BE CAUSE FOR REJECTION. REMOVE ALL BURRS AND SHARP EDGES.

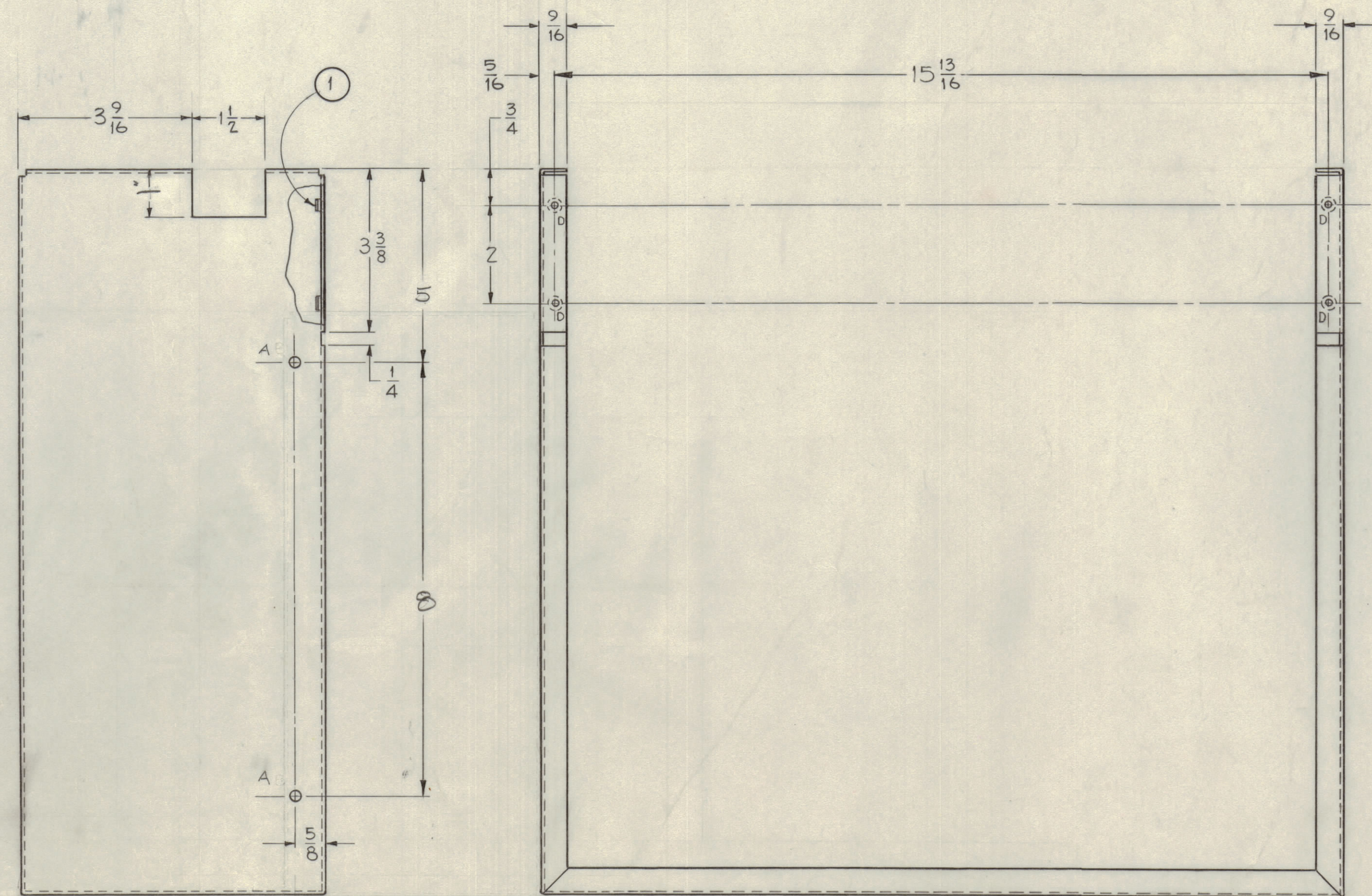
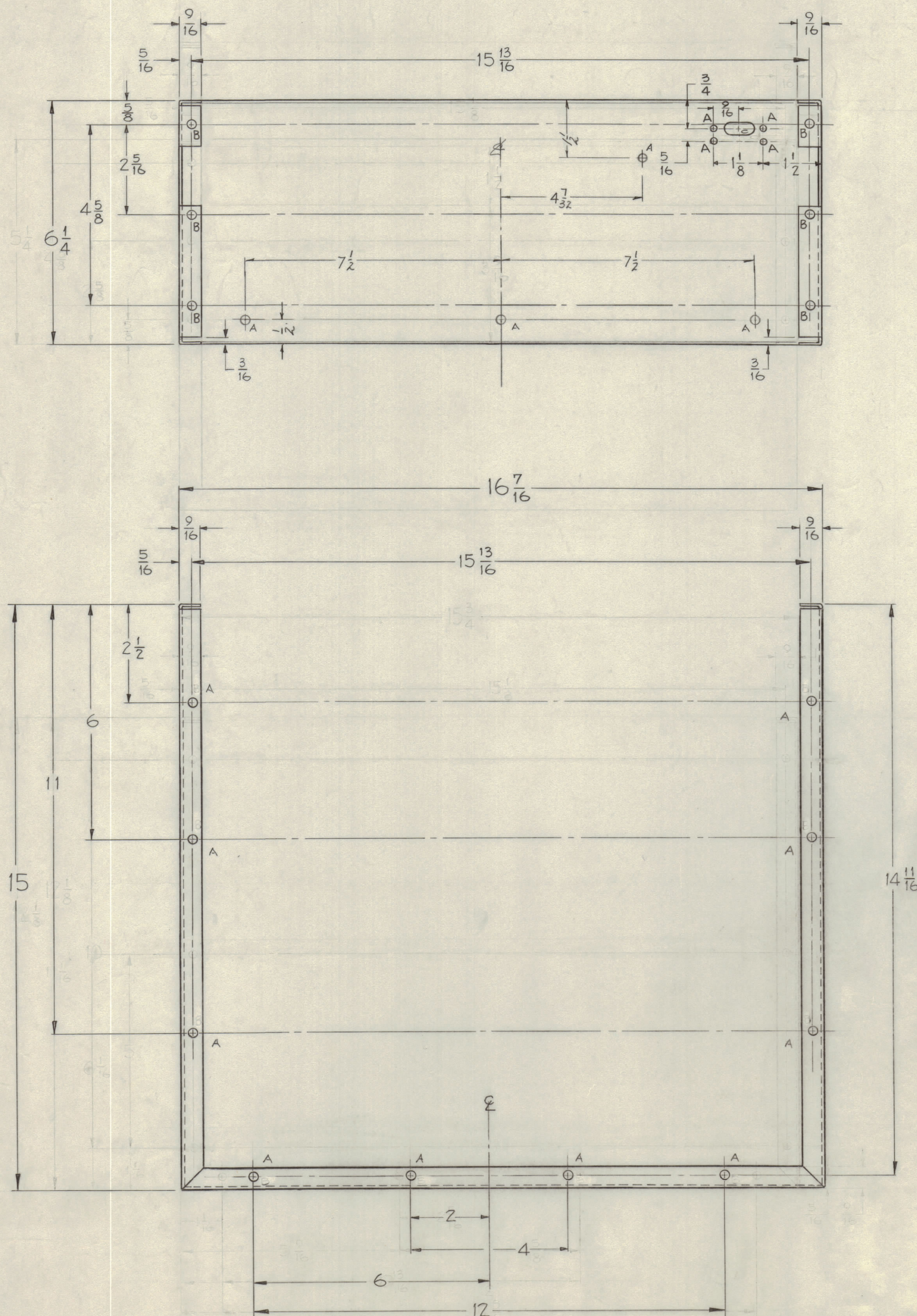
NOTICE TO PERSONS RECEIVING THIS DRAWING

THE TECHNICAL MATERIEL CORPORATION claims proprietary right in the material disclosed herein. This drawing is issued in confidence for engineering information only and may not be reproduced or used to manufacture anything shown herein without permission from THE TECHNICAL MATERIEL CORPORATION to the user. This drawing is loaned for mutual assistance and is subject to recall at any time.

Property of:
THE TECHNICAL MATERIEL CORPORATION
MAMARONECK, NEW YORK

A ~ 3/16 (.187) DIA.
B ~ 13/64 (.203) DIA.
C ~ 5/16 X 3/4 SLOT
D = DRILL .194 Max., .191 Min. Dia.
For NT-129-632-4

20 REQ.
6 REQ.
1 REQ.
4 REQ.



ISSUE	ITEM	CHANGED FROM	DATE	CH. NO.	DRAFTER	CHECKER	ENGR. APP.
A	2	5 was 4	5/1/59		SAF	JR	ME
	1	8 was 9					
TOLERANCES		SCALE: 1" = 1"					
ALL	DEC. DIM. ±	DRILL, PUNCH, COMMERCIAL STOCK					
OTHERS	FRAC. DIM. ±	SIZES AND MANUFACTURERS					
	ANGULAR DIM. ±	TOLERANCES ARE NOT INCLUDED.					

4	1	NT-129-632-4	NUT, SWAGE TYPE (ROUND)
REQ. ITEM	PART NO.	DESCRIPTION	
	.064	THE TECHNICAL MATERIEL CORP. MAMARONECK, NEW YORK	
STOCK SIZE		ALUMINUM	
MATERIAL		CHASSIS, WRAP AROUND (UTILITY DRAWER)	
WEIGHT PER PC.		5052 - H-32	
TYPE & TEMPER		JOHN C BIELE	
		DRAWN	
		ELEG. DES. APP.	
		MECH. DES. APP.	
		HEAT TREAT. SPEC.	
		S-101 - CAUSTIC DIP	
		S-107 - LACQUER DIP	
		FINISH & SPEC. NO.	
		CHECKED	
		FINAL APPROVAL	

1	UTD-2	RAK-8	4-14-59
REQ PER UNIT	MODEL	PROJECT NO.	DATE
		ASS'Y. NO.	
		USED ON	

MS-1732 A