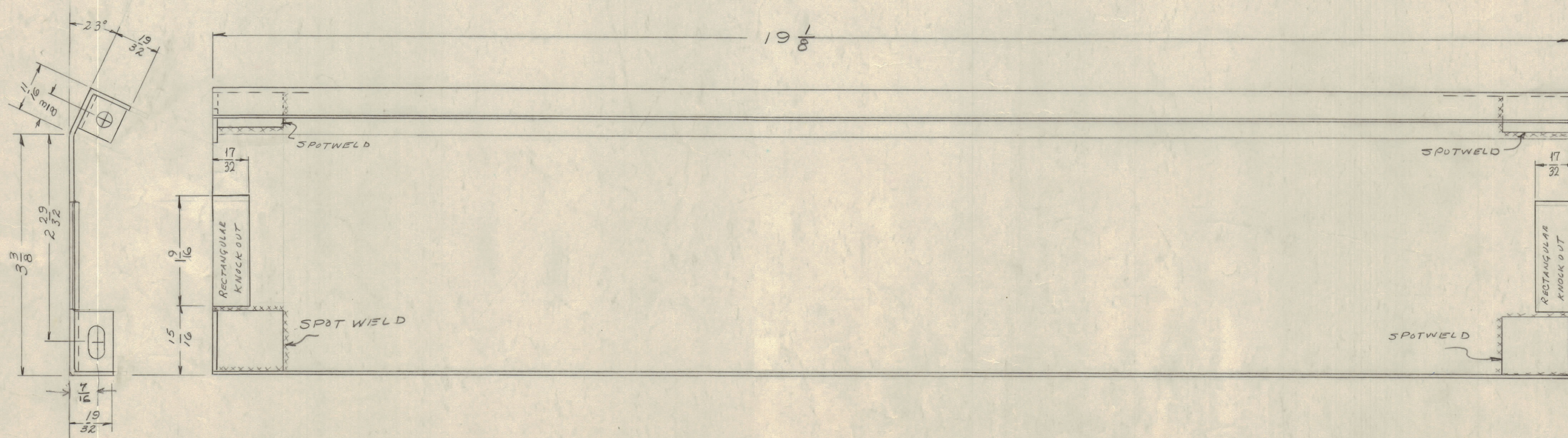
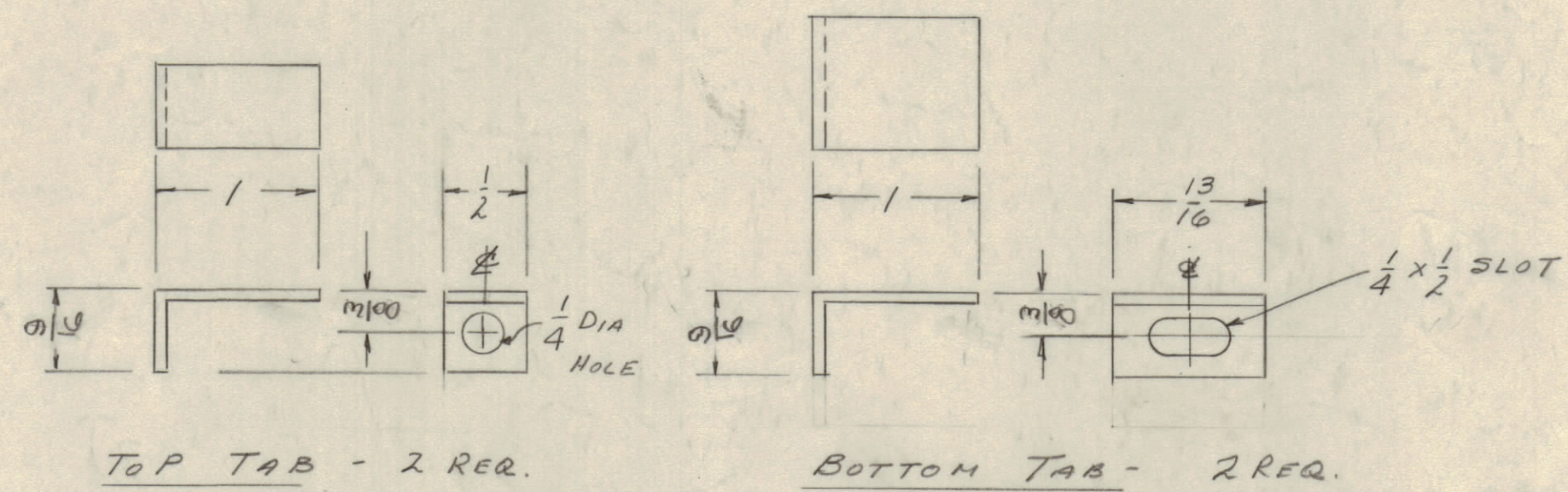


IF IT IS FOUND DESIRABLE TO CHANGE ANY TOLERANCE OR OTHER DETAIL SPECIFIED ON THIS DRAWING NOTIFY THE PURCHASER PROMPTLY.  
 MAXIMUM ALLOWABLE TOLERANCES HAVE BEEN DETERMINED AND DEVIATIONS WILL BE CAUSE FOR REJECTION. REMOVE ALL BURRS AND SHARP EDGES



MS-1739 D

**NOTICE TO PERSONS RECEIVING THIS DRAWING**  
 THE TECHNICAL MATERIEL CORPORATION claims proprietary right in the material disclosed hereon. This drawing is issued in confidence for engineering information only and may not be reproduced or used to manufacture anything shown hereon without permission from THE TECHNICAL MATERIEL CORPORATION to the user. This drawing is loaned for mutual assistance and is subject to recall at any time.  
 Property of:  
 THE TECHNICAL MATERIEL CORPORATION  
 MAMARONECK, NEW YORK

D	2101, S114 DELETED S520 WAS S220	7-20-61	18421	WHD		DR	
C	1-9/16 WAS 1 1/2 DIM. 3-3/8 WAS 3-7/16, 17/32 WAS 1/2	7-28-61	11951	SRG			
B	1 3 7/16 WAS 3 3/8	11-20-59	1461	DM			
A	2 19 1/8 WAS 19 HOLES IN TABS RELOCATED	11-11-59	1418	DA			
ISSUE	ITEM	CHANGED FROM	DATE	CN. NO.	DRAFTS	CHECKER	ENG. APP.
TOLERANCES		SCALE: 20					
ALL	DEC. DIM. ±	DRILL, PUNCH, COMMERCIAL STOCK					
OTHERS	FRAC. DIM. ±	SIZES AND MANUFACTURERS					
	ANGULAR DIM. ±	TOLERANCES ARE NOT INCLUDED.					

1	CONSOLE				
REQ PER UNIT	MODEL	PROJECT NO.	ASSY. NO.	DATE	
USED ON					

REQ. ITEM	PART NO.	DESCRIPTION	SYMBOL
16 GA.		THE TECHNICAL MATERIEL CORP. MAMARONECK, NEW YORK	
STEEL		CENTER, FRONT SUPPORT	
MATERIAL	WEIGHT PER FC.		
MILD			
TYPE & TEMPER			
DRAWN	ELEC. DES. APP.	MECH. DES. APP.	
CHECKED		FINAL APPROVAL	
HEAT TREAT. SPEC. S520 BLU/GRY TEX VINYL FINISH & SPEC. NO. 1			MS-1739 D