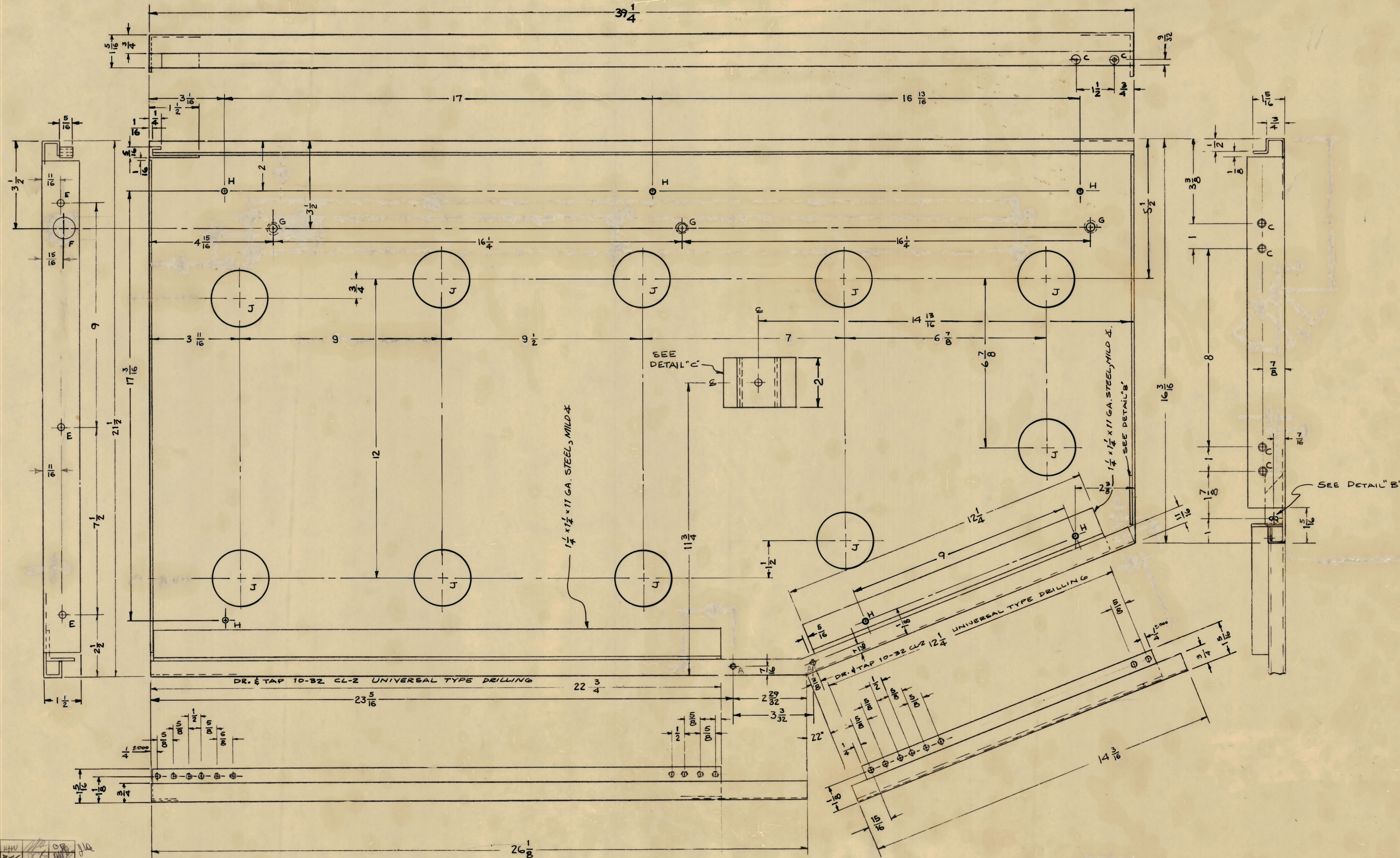
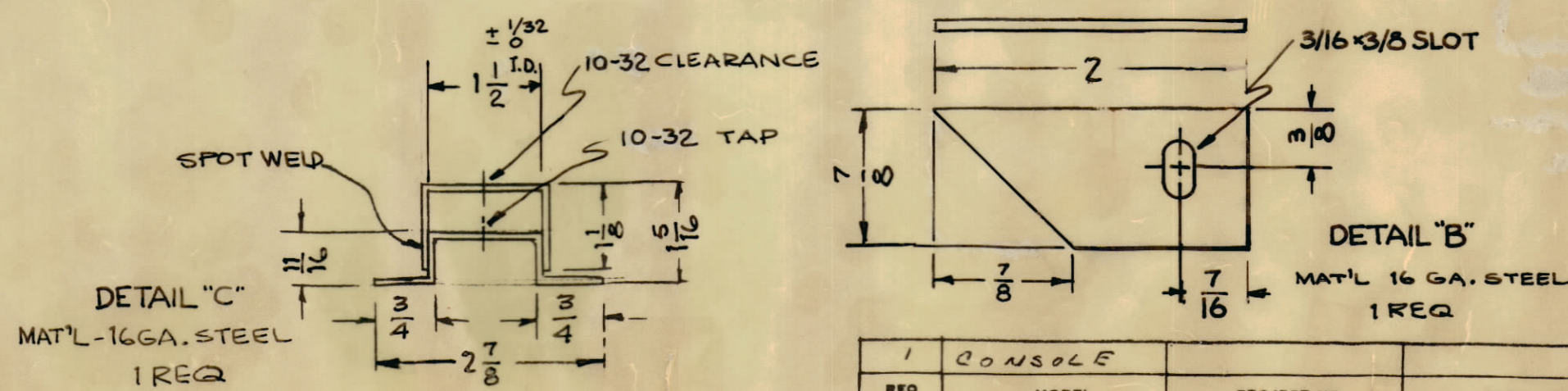


IF IT IS FOUND DESIRABLE TO CHANGE ANY TOLERANCE OR OTHER DETAIL SPECIFIED ON THIS DRAWING NOTIFY THE PURCHASER PROMPTLY.
 MAXIMUM ALLOWABLE TOLERANCES HAVE BEEN DETERMINED AND DEVIATIONS WILL BE CAUSE FOR REJECTION. REMOVE ALL BURRS AND SHARP EDGES.

- HOLES REQ
- A ~ DRILL & TAP 8-32 2
 - C ~ COUNTERSINK 8-32 F.H.S. 6
 - D ~
 - E ~ 1/4 (.250) DIA. HOLE 3
 - F ~ 7/8 DIA. 1
 - G ~ COUNTERSINK 6-32 F.H.S. 3
 - H ~ 13/64 (.203) DIA. 6
 - J ~ 2-1/4 DIA. 10



SPOT WELD, ALL JOINING PIECES, SECURELY.
 REMOVE BURRS & SHARP EDGES.



F	S 371 S14 DELETED	730618471	WHU				
E	S520 WAS S220	82004 14631	WV				
D	ON DETAIL 'C' 1 1/2" DIA. WAS 1 3/8"	11.11.64 12900	ARB				
C	DIMS. UPDATED						
7	ON DET. 'C' TAP CLEAR. WAS 8-32						
6	ON DETAIL 'B' CUTOFF ADD.						
5	DETAIL 'A' DELETED						
4	'G' HOLE RELOC. WAS TEA	6.18.64 11545	WV				
3	'F' WAS 7/8 X 1 1/8 SLOT						
2	'C' HOLE WAS 8 EA.						
1	'A' HOLE WAS 4 EACH						
B	DIM 16 3/8 WAS 17	Dim 8.2.64 2896	WV				
3	THREE 'A' HOLES ADDED						
2	THREE 'A' HOLES DELETED						
1	'F' HOLE RELOCATED						
ISSUE	ITEM	CHANGED FROM	DATE	CH. NO.	DRAFTS	CHECKER	ENG. APP.
TOLERANCES		SCALE:					
ALL	DEC. DIM. ±	DRILL PUNCH, COMMERCIAL STOCK					
OTHERS	FRACTIONAL DIM. ±	SIZES AND MANUFACTURERS					
	ANGULAR DIM. ±	TOLERANCES ARE NOT INCLUDED.					

1	CONSOLE	PROJECT NO.	ABBY. NO.	1-6-60
REQ PER UNIT	MODEL	DATE	UBID ON	

REQ. ITEM	PART NO.	DESCRIPTION	SYMBOL
16 GA.		THE TECHNICAL MATERIEL CORP.	
STEEL		MAMARONECK, NEW YORK	
MATERIAL	WEIGHT PER FC.	RIGHT SIDE, INSIDE	
MILD			
TYPE & TEMPER			
HEAT TREAT. SPEC.			
5520 BLU/GRY TEX. VINYL			
FINISH & SPEC. NO.			

MS-1742 F