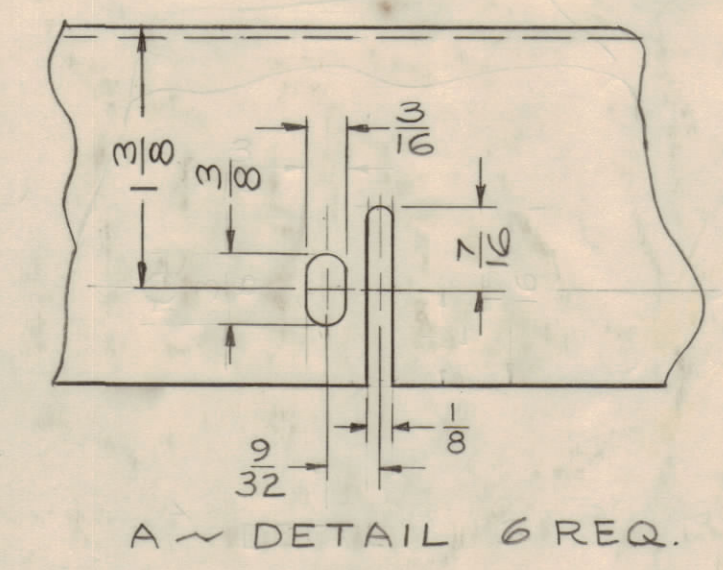
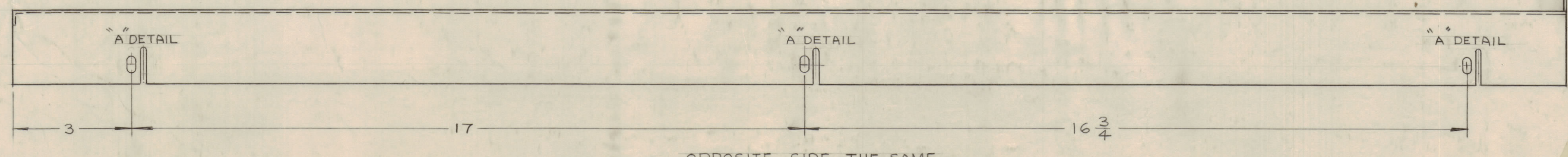
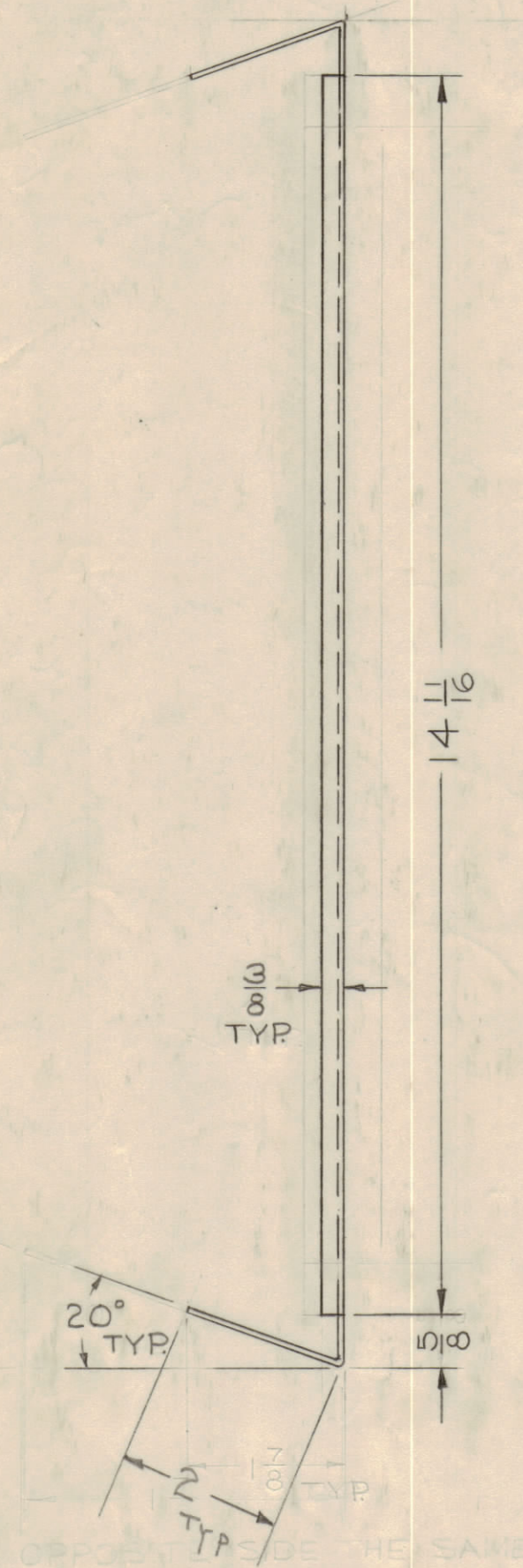
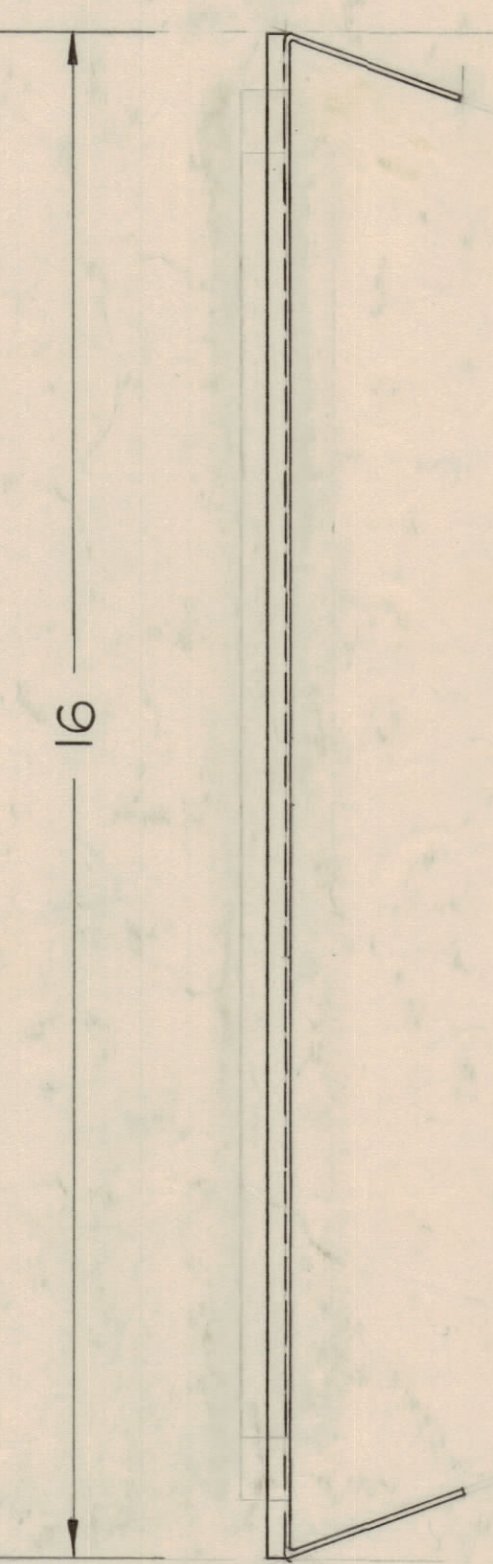
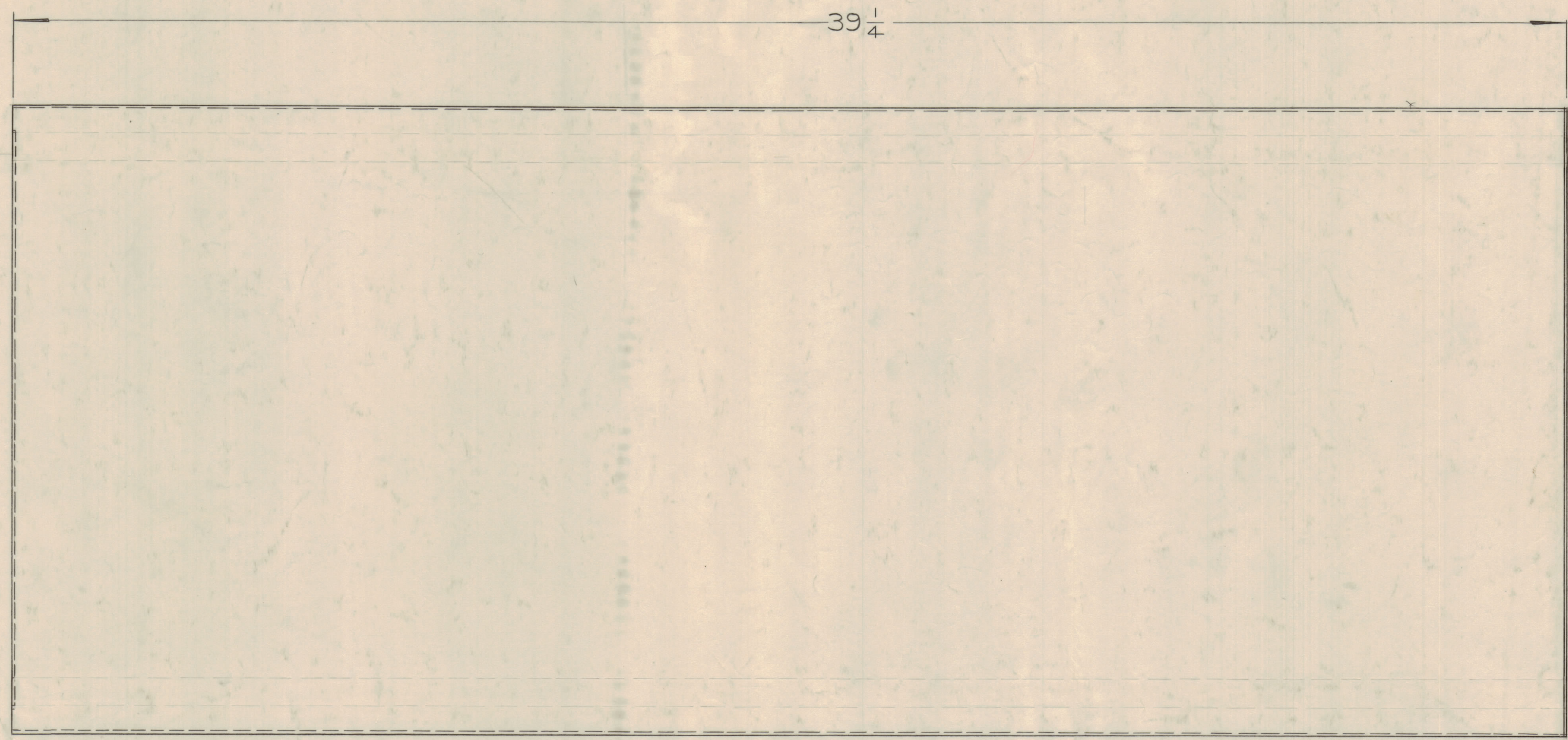


NOTICE TO PERSONS RECEIVING THIS DRAWING
 THE TECHNICAL MATERIEL CORPORATION claims proprietary right in the material disclosed herein. This drawing is issued in confidence for engineering information only and may not be reproduced or used to manufacture anything shown herein without permission from THE TECHNICAL MATERIEL CORPORATION to the contrary. This drawing is loaned for mutual assistance and is subject to recall at any time.
 Property of:
 THE TECHNICAL MATERIEL CORPORATION
 MAMARONECK, NEW YORK



FINISH: S-371 DEGREASING
 S-11# ZINC CHROMIC PRIMER
 S-520 ROPF68MOTEMHUNGRAVENAFEL

DEC. DIM. ±	FRAC. DIM. ± 1/64	ANGULAR DIM. ±	SCALE: 1/2" = 1"	MAXIMUM ALLOWABLE TOLERANCES HAVE BEEN DETERMINED AND ANY DEVIATIONS WILL BE CAUSE FOR REJECTION. REMOVE ALL BURRS AND SHARP EDGES		
ISSUE ZONE	DESCRIPTION	DATE	CH. NO.	DRAFTS	CHECKER	ENG. APP.
B	S520 WAS S220 S114 # S371 DELETED	7/29/67	10421	WAD		OR
A	REVISED AND REDRAWN	9/1/60		RY		AD

REQ. PER UNIT	MODEL	SECTION	ASSY. NO.	DATE
1	CONSOLE			8-31-60

REQ. ITEM	PART NO.	DESCRIPTION	SYMBOL
22	GAGE	THE TECHNICAL MATERIEL CORP. MAMARONECK, NEW YORK	
	STOCK SIZE		
	COLD ROLL STEEL	ANGULAR FILLER	
MATERIAL			
TYPE & TEMPER		CW	
HEAT TREAT. SPEC.		CHECKED	FINAL APPROVAL
S520 BLU/GRY TEX VINYL			
FINISH & SPEC. NO.		MS 1747	B

MS1747 B