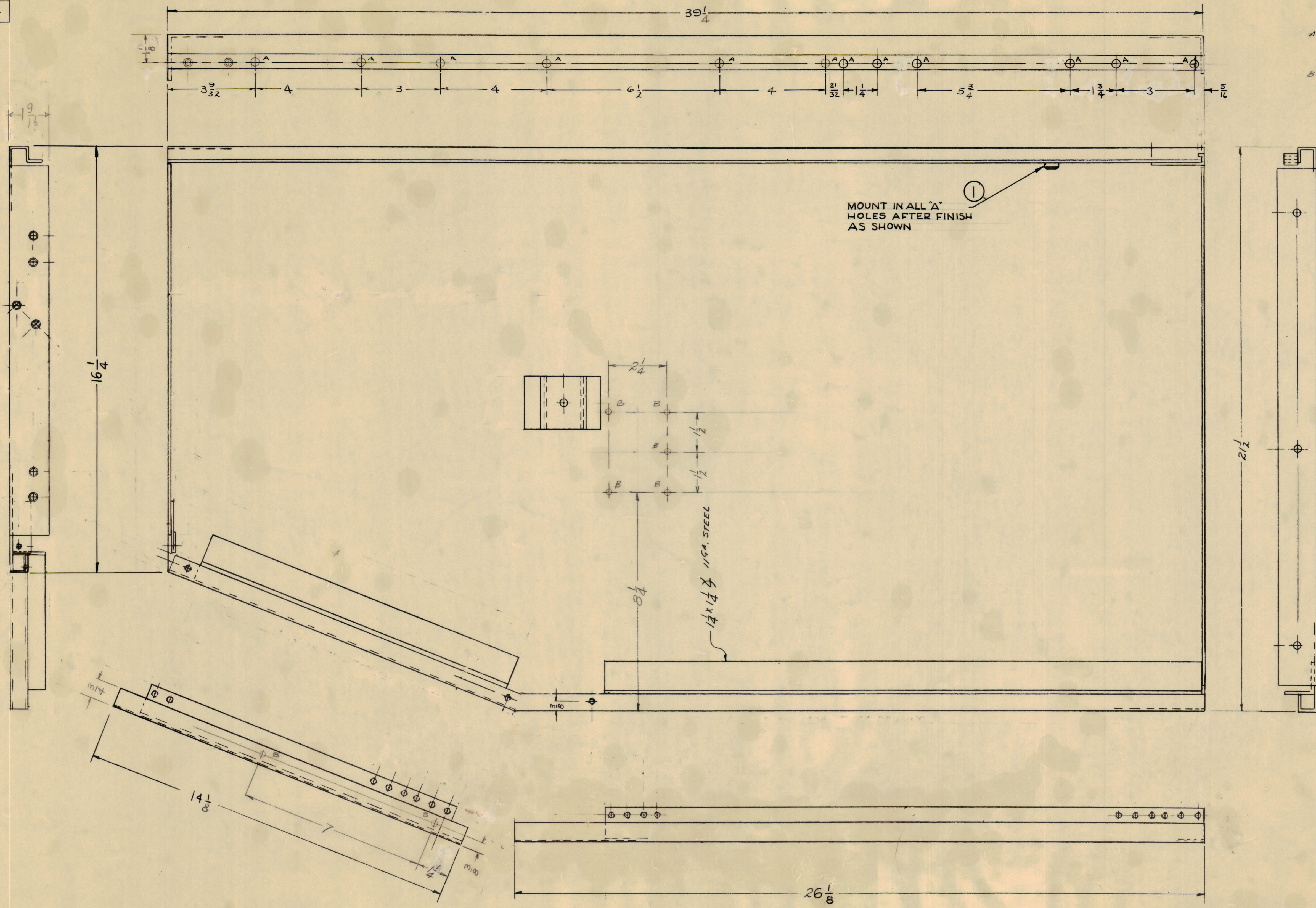


IF IT IS FOUND DESIRABLE TO CHANGE ANY TOLERANCE OR OTHER DETAIL SPECIFIED ON THIS DRAWING NOTIFY THE PURCHASER PROMPTLY.  
 MAXIMUM ALLOWABLE TOLERANCES HAVE BEEN DETERMINED AND DEVIATIONS WILL BE CAUSE FOR REJECTION. REMOVE ALL BURRS AND SHARP EDGES



A - .221 - .224 DIA. HOLES FOR NT-129-832-4 12 REQ.  
 B - 13/64 (.203) DIA. HOLE 7 REQ.

NOTICE TO PERSONS RECEIVING THIS DRAWING  
 THE TECHNICAL MATERIEL CORPORATION claims proprietary right in the material disclosed hereon. This drawing is issued in confidence for engineering information only and may not be reproduced or used to manufacture anything shown hereon without permission from THE TECHNICAL MATERIEL CORPORATION to the user. This drawing is loaned for mutual assistance and is subject to recall at any time.  
 Project of:  
 THE TECHNICAL MATERIEL CORPORATION  
 MAMARONECK, NEW YORK

Ref. Modify MS-1736 AS SHOWN

REQ. ITEM	PART NO.	DESCRIPTION	TYPE	SYMBOL
10	1	NT-129-832-4	NUT ROUND, SWAGE	"A"
CXP		THE TECHNICAL MATERIEL CORP. MAMARONECK, NEW YORK		
STOCK SIZE		PANEL, LEFT SIDE		
MATERIAL		AC		
WEIGHT PER PC.				
TYPE & TEMPER		DR		
DRAWN		HEAT TREAT. SPEC.		
CHECKED		FINAL APPROVAL		
FINISH & SPEC. NO.		MS-1765		C

ISSUE	ITEM	CHANGED FROM	DATE	GN. NO.	DRAFTS	CHECKER	ENG. APP.
C	2	2 "A" HOLES ADDED	8-22-64	12194	AB	@	dh
	3	4 "A" HOLES RELOCATED					
B	1	12 "A" HOLES ADDED	2-16-64	4188	RU	gob	fr
	2	DIM 26 7/8 WAS 28 1/2					
A	1	DIM 16 1/4 ADDED (LEFT LIP)	5-3-64				
	2	HOLE 5 3/4 TRANSFERRED TO S.					
	3	CLAMP FILLED					

TOLERANCES: DEC. DIM ± 1/64, FRAC. DIM ± 1/64, ANGULAR DIM ± 1/64  
 SCALE: 1" = 1"

REQ. PER UNIT	MODEL	PROJECT NO.	ASSY. NO.	DATE
1	RAK-7			

MS-1765 C