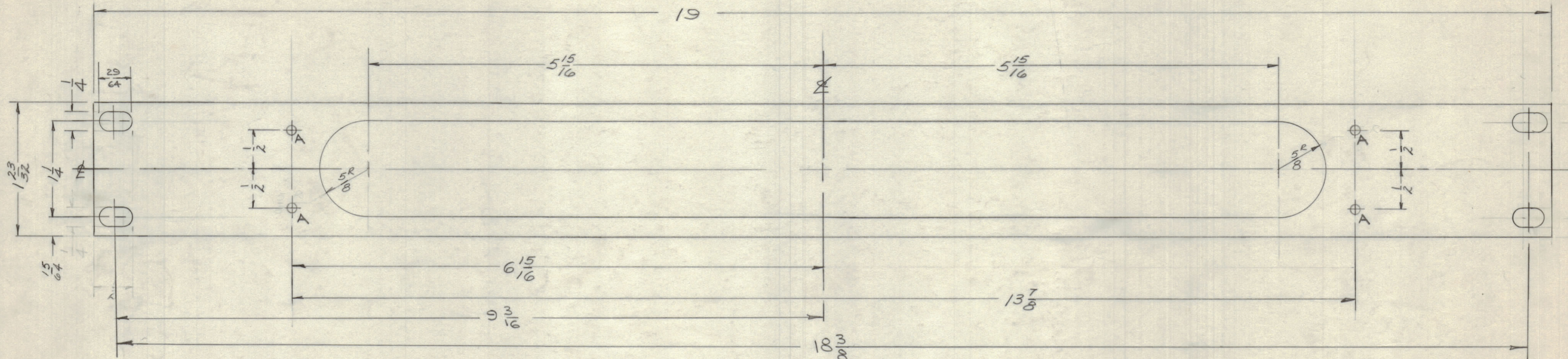


IF IT IS FOUND DESIRABLE TO CHANGE ANY TOLERANCE OR OTHER DETAIL SPECIFIED ON THIS DRAWING NOTIFY THE PURCHASER PROMPTLY.

MAXIMUM ALLOWABLE TOLERANCES HAVE BEEN DETERMINED AND DEVIATIONS WILL BE CAUSE FOR REJECTION. REMOVE ALL BURRS AND SHARP EDGES.



A - 5/32 (.281) DIAM. 4 REQ'D.

MS-1766 A

FINISH -  
S409 IRIDITE

S114 - ZINC CHROMATE PRIMER } FRONT &  
S115 - TMC SMOOTH GRAY ENAMEL } EDGES ONLY  
OR PRIMER PAINT TO CUST. SPEC

MACHINING -

- 1- LATERAL BOW OF PANEL MUST BE KEPT TO .031 TOLERANCE.
2. MILL ALL EDGES.
3. HOLES MUST BE DRILLED.
- 4- PANEL MUST BE FREE OF ALL MACHINING MARKS, GOUGES AND SCRATCHES. IF NECESSARY, SAND FRONT OF PANEL WITH #120 GRIT SAND PAPER.

UNLESS OTHERWISE SPECIFIED DIMENSIONS ARE IN INCHES AND INCLUDE CHEMICALLY APPLIED OR PLATED FINISHES	
DECIMALS .X ± .05 .XX ± .01 .XXX ± .005	FRACTIONS ± 1/64 ANGLES ± 0° 30'
<b>TOLERANCES</b>	

NOTICE TO PERSONS RECEIVING THIS DRAWING

THE TECHNICAL MATERIEL CORPORATION claims proprietary right in the material disclosed hereon. This drawing is issued in confidence for engineering information only and may not be reproduced or used to manufacture anything shown hereon without permission from THE TECHNICAL MATERIEL CORPORATION to the user. This drawing is loaned for mutual assistance and is subject to recall at any time.

Property of:  
THE TECHNICAL MATERIEL CORPORATION  
MAMARONECK, NEW YORK

REF. TMC # MS-1311 (8)

REQ. ITEM	PART NO.	DESCRIPTION	SYMBOL
	3/16 THICK	THE TECHNICAL MATERIEL CORP. MAMARONECK, NEW YORK	
	ALUMINUM	PANEL, UTILITY COMPARTMENT	
	2024-T3		
	TYPE & TEMPER	DRAWN <i>me</i>	ELEC. DES. APP. <i>me</i>
	HEAT TREAT. SPEC.	CHECKED <i>me</i>	FINAL APPROVAL
	SEE NOTE		MS-1766 A
	FINISH & SPEC. NO.		

A	1	"A" HOLES WERE 9/32 D.	6/15/60	2445	CU	JOB	
ISSUE	ITEM	CHANGED FROM	DATE	CH. NO.	DRAFTS	CHECKER	ENG. APP.

TOLERANCES		SCALE: <i>1" = 1"</i>
ALL OTHERS	DEC. DIM. ± FRAC. DIM. ± 1/64 ANGULAR DIM. ±	DRILL, PUNCH, COMMERCIAL STOCK SIZES AND MANUFACTURERS TOLERANCES ARE NOT INCLUDED.

REQ. PER UNIT	MODEL	PROJECT NO.	ASSY. NO.	DATE