

IF IT IS FOUND DESIRABLE TO CHANGE ANY TOLERANCE OR OTHER DETAIL SPECIFIED ON THIS DRAWING NOTIFY THE PURCHASER PROMPTLY.

MAXIMUM ALLOWABLE TOLERANCES HAVE BEEN DETERMINED AND DEVIATIONS WILL BE CAUSE FOR REJECTION. REMOVE ALL BURRS AND SHARP EDGES.

**STANDARD DRAWING**

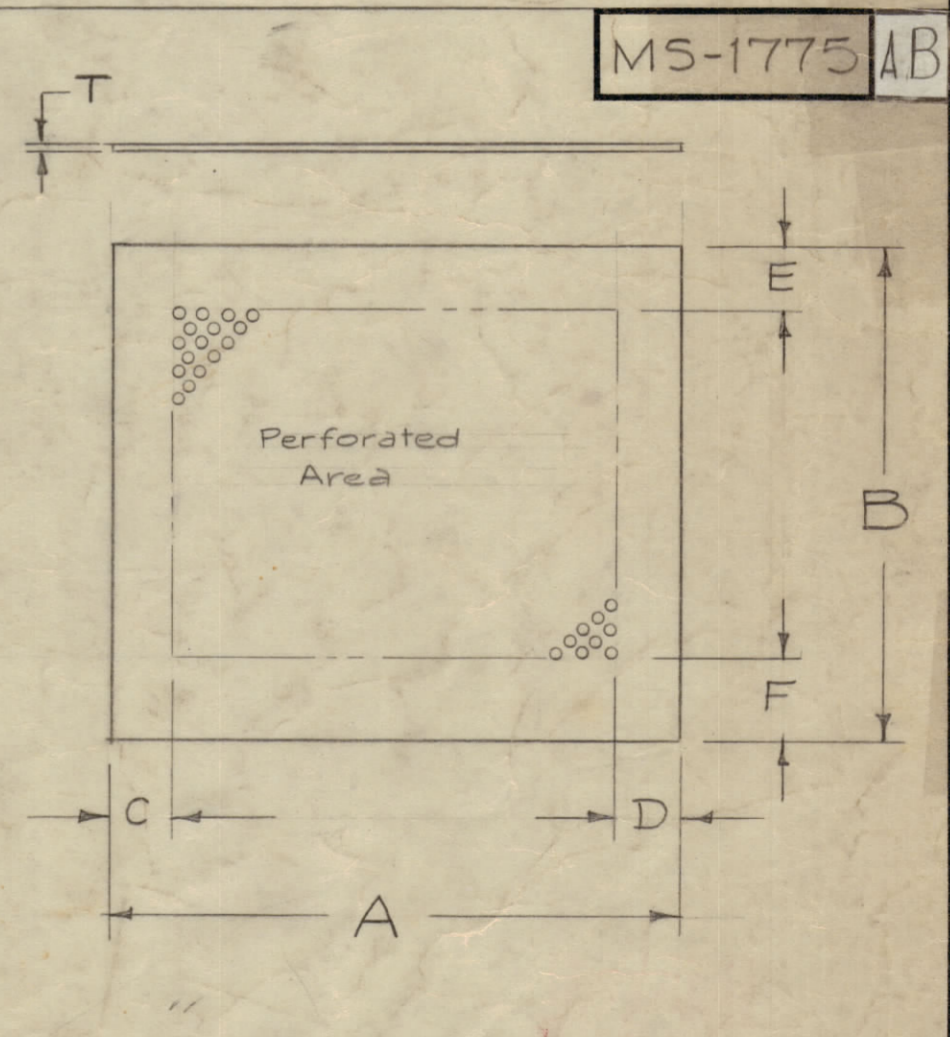
TMC PART NO.	DIMENSIONS (INCHES)							PERFORATION TYPE CODE (See Chart)	FINISHED COVER REF.
	A o/A	B o/A	C Border	D Border	E Border	F Border	T Thk.		
MS-1775-1	17 1/2	16 5/8	1 1/4	1 1/4	1 1/4	1 1/2	.051	A	MS-1774
MS-1775-2	17 9/16	13 11/16	1 1/4	1 1/4	1 9/16	1 1/2	.051	A	MS-1797
MS-1775-3	17 5/8	17 7/8	1 1/4	1 1/4	1 1/2	8 9/16	.051	A	MS-1825
MS-1775-4	17 5/8	16 5/8	1	1	6 1/8	1	.051	A	MS-1824
MS-1775-5	28 3/8	10 5/8	1 1/4	1 1/4	1 3/4	1 1/2	.064	A	MS-1970 (TOP & BOTTOM COVERS-AP-104)
MS-1775-6	28 3/8	7 5/8	1 1/4	1 1/4	1 1/4	1 1/2	.064	A	MS-1969 (REAR COVER AP-104)
MS-1775-7	17 3/8	11 7/8	1 1/4	1 1/4	1 1/4	1 1/2	.051	B	MS-2070
MS-1775-8	14 5/8	6 5/16	1 1/4	1 1/4	1 1/4	1 1/4	.051	B	MS-2139 (TOP COVER CMO-142)
MS-1775-9	17 3/8	15 1/8	1 1/4	1 1/4	1 1/2	1 5/8	.051	B	MS-1860 CPP-2
MS-1775-10	17 3/8	18 3/16	1 1/4	1 1/4	1 1/4	1 1/2	.051	B	MS-2269 CHG-1
MS-1775-11	17 1/2	14 15/16	1 1/4	1 1/4	1 1/2	1 3/4	.051	B	MS-2327
MS-1775-12	17 3/8	19 15/16	1 1/4	1 1/4	1 1/2	4 5/16	.051	B	MS-2207 (CLL-1)
MS-1775-13	17 3/8	18	1 1/4	1 1/4	1 1/2	1 3/4	.051	B	MS-2208 (CLL-1)
MS-1775-14	11 1/16	10 15/16	1	1	1	1	.051	B	MS-2415 (CHG-1)
MS-1775-15	17-9/16	16-3/8	1"	1"	6-5/8	1"	.051	A	MS-2497 (RFB-1, RFC-1)
MS-1775-16	17 9/16	14 3/4	1 1/4	1 1/4	2 1/2	3	.051	A	MS-2605 (PS-4A)
MS-1775-17	17 3/8	12 3/4	1 1/4	1 1/4	1 1/4	2 7/8	.051	B	MS-2622 (GPE-1)
MS-1775-18	17-3/8	16-13/16	1-1/4	1-1/4	1-1/4	6-3/16	.051	A	MS-2686 (SBS-1)
MS-1775-19	17-3/8	16-3/4	1-1/4	1-1/4	1-1/4	4-3/4	.051	B	MS-2796 (LFA-2)
MS-1775-20	17-3/8	15-7/8	1-1/4	1-1/4	1-1/4	1 3/4	.051	B	MS-2709, MS-2708 (AFC-2)
MS-1775-21	17	11-3/4	1	1	1	3-3/4	.064	A	MS-2772 (HFP-1)
MS-1775-22	17	8-3/8	1	1	4	7/8	.064	A	MS-2773 (HFP-1)
MS-1775-23	17	19-7/8	1	1	2-5/8	12-1/4	.064	A	MS-2775 (HFP-1)
MS-1775-24	17-3/8	17-7/16	1 1/4	1 1/4	1 1/4	1 1/4	.051	B	MS-2726 (SBS-1)
MS-1775-25	17-3/8	16	1-1/2	1-1/2	1-5/8	2	.051	B	MS-2804 (HFI-1)
MS-1775-26	17-3/8	14-15/16	1-1/2	1-1/2	1-5/8	1-5/8	.051	B	MS-2805 (HFI-1)
MS-1775-27	17-3/8	13-15/16	1-1/4	1-1/4	1-7/16	3-1/4	.051	B	MS-2860 (HFA-1)
MS-1775-28	17-3/8	14-3/4	1-1/4	1-1/4	1-7/16	2-5/16	.051	B	MS-2861 (HFA-1)
MS-1775-29	17-3/8	19-1/16	1-1/4	1-1/4	1-1/2	2-7/16	.051	B	MS-2899 (HFS-1)
MS-1775-30	17-3/8	18-7/16	1-1/4	1-1/4	1-1/4	1-1/2	.051	B	MS-2898 (HFS-1)
MS-1775-31	17 1/2	17	1 1/4	1 1/4	2	1 9/16	.051	B	MS-2971 (GPR-92)
MS-1775-32	10	9 3/8	1 1/4	1 1/4	1 1/2	1 1/2	.051	B	MS-2981 (GPR-92)
MS-1775-33	17-3/8	18-13/16	1-1/4	1-1/4	1-1/4	3-1/2	.051	B	MS-2962 (HFR-1/C)
MS-1775-34	19-1/2	16-5/8	1-1/4	1-1/4	1-1/4	1-1/2	.064	A	MS-3054 (MS-3055) (BIAS GPT-200K)

PERFORATION TYPE CHART	
PERFORATION CODE	PERFORATION TYPE
A	.150 D. Holes on 3/16 C. (Staggered)
B	.072 D Holes on 1/8 Centers.

**OBSOLETE NO LONGER USED FOR REFERENCE ONLY**  
4-24-63 EMN 8828

AB	1	OBSOLETE-NO LONGER USED	4-24-63	8828	EMN	8828	8/22
AA	1	MS-1775-34 ADDED	12-11-62	7839	EMN	7/14	1/16
Z	1	MS-1775-33 ADDED	10-12-62	7393	EMN	1/16	1/16
Y	1	MS-1775-20 DIM F WAS 2 5/8 ADDED MS-1775-31 & MS-1775-32	7-2-62	6843	RT	1/16	1/16
X	1	MS-1775-29 #30 ADDED	4-2-62	6557	EMN	1/16	1/16
W	1	MS-1775-25, 26, 27, & 28 ADDED	2-12-62	6338	EMN	1/16	1/16
V	2	REF. MS-2726 DELETED ON-13	1-31-62	6293	G.S.	1/16	1/16
U	1	MS-1775-21 THRU 24 ADDED	1-31-62	6293	G.S.	1/16	1/16
T	1	MS-1775-20 ADDED	1-4-62	6166	EMN	1/16	1/16
T	1	MS-1775-19 ADDED	12-12-61	6045	EMN	1/16	1/16
S	2	DNMS-1775-13, Ref (MS-2726 ADDED)	11-3-61	5809	EMN	1/16	1/16
R	1	MS-1775-18 ADDED	6-16-61	5073	EMN	1/16	1/16
R	1	MS-1775-16 Revised	6-16-61	5073	EMN	1/16	1/16
P	1	MS-1775-16 ADDED	6-8-61	5042	EMN	1/16	1/16
N	1	ON 1775-3 "F" DIM WAS 1 1/2	4-12-61	4639	EMN	1/16	1/16
M	2	ON 1775-11 ON COVER REF WASMS-2828	3-14-61	4411	EMN	1/16	1/16
M	1	ON MS-1775-9 "B" WAS 1 1/4 15/16	3-14-61	4411	EMN	1/16	1/16
L	1	MS-1775-15 ADDED	12-22-60	3764	EMN	1/16	1/16
K	1	DN-10 CHANGED "B" DIM FROM 1 7/8	11-22-60	3565	EMN	1/16	1/16
J	1	MS-1775-14 ADDED	9-13-60	~	EMN	1/16	1/16
H	1	MS-1775-12, 13 ADDED	9-1-60	~	EMN	1/16	1/16
G	1	MS-1775-11 ADDED	8-31-60	~	EMN	1/16	1/16
F	1	MS-1775-9 & 10 ADDED	5-10-60	~	EMN	1/16	1/16
E	1	MS-1775-8 ADDED	3-2-60	~	EMN	1/16	1/16
D	1	ADDED MS-1775-7	2-18-60	~	EMN	1/16	1/16
C	1	MS-1775-3 & 4 ADDED FOR AP-104	1-21-60	~	EMN	1/16	1/16
B	1	MS-1775-3 & 4 ADDED (FOR EFD-1)	4-22-59	2	EMN	1/16	1/16
A	1	MS-1775-2 ADDED (FOR PS-4)	6-19-59	1	EMN	1/16	1/16

ISSUE	ITEM	CHANGED FROM	DATE	CH. NO.	DRAFTS	CHECKER	ENG. APP.
TOLERANCES		SCALE: None					
ALL OTHERS	DEC. DIM. ±	DRILL PUNCH COMMERCIAL STOCK SIZES AND MANUFACTURERS TOLERANCES ARE NOT INCLUDED.					
	FRAC. DIM. ± 1/64						
	ANGULAR DIM. ±						



REQ. ITEM	PART NO.	DESCRIPTION	SYMBOL
See Chart ("T")		THE TECHNICAL MATERIEL CORP. MAMARONECK, NEW YORK	
STOCK SIZE			
Aluminum	—#	BLANK SIZE, COVER	
MATERIAL WEIGHT PER PC.			
5052-H32		(Plain Type)	
TYPE & TEMPER			
—#			
HEAT TREAT. SPEC.			
None			
FINISH & SPEC. NO.			

MS-1775 AB