

IF IT IS FOUND DESIRABLE TO CHANGE ANY TOLERANCE OR OTHER DETAIL SPECIFIED ON THIS DRAWING NOTIFY THE PURCHASER PROMPTLY.

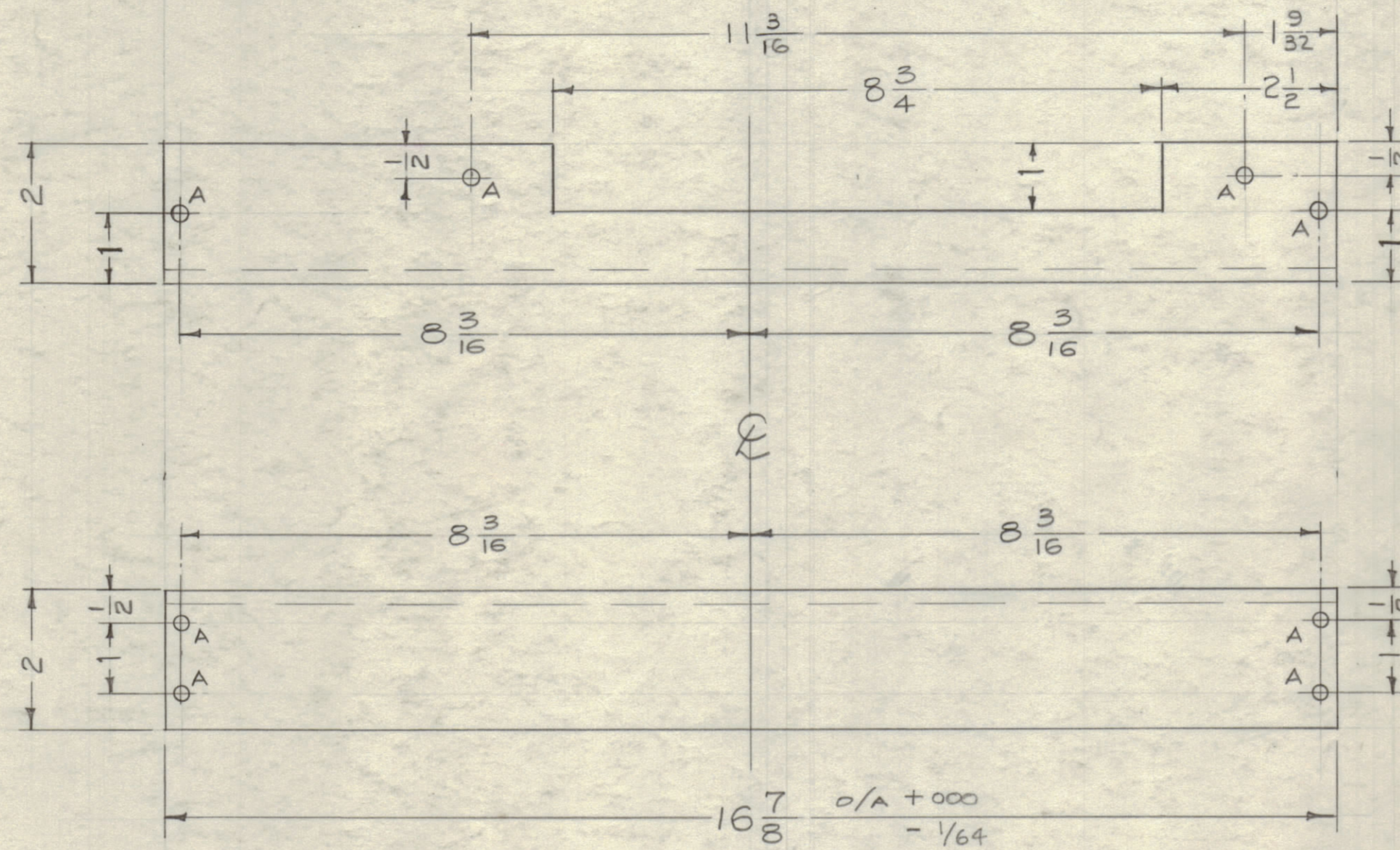
MAXIMUM ALLOWABLE TOLERANCES HAVE BEEN DETERMINED AND DEVIATIONS WILL BE CAUSE FOR REJECTION. REMOVE ALL BURRS AND SHARP EDGES.

A-  $\frac{13}{64}$  (.203) D. 8 Req.

NOTICE TO PERSONS RECEIVING THIS DRAWING

THE TECHNICAL MATERIEL CORPORATION claims proprietary right in the material disclosed hereon. This drawing is issued in confidence for engineering information only and may not be reproduced or used to manufacture anything shown hereon without permission from THE TECHNICAL MATERIEL CORPORATION to the user. This drawing is loaned for mutual assistance and is subject to recall at any time.

Property of:  
THE TECHNICAL MATERIEL CORPORATION  
MAMARONECK, NEW YORK



MS-1778 A

REF ~ TMC DWG NO. ~ LD-608

REQ. ITEM	PART NO.	DESCRIPTION	SYMBOL
2 x 2 x $\frac{3}{16}$ THK $\phi$		THE TECHNICAL MATERIEL CORP. MAMARONECK, NEW YORK	
STOCK SIZE		SUPPORT, REAR	
Aluminum			
MATERIAL	WEIGHT PER PC.		
6063-T3	16 11/16		
TYPE & TEMPER	DRAWN	ELEC. DES. APP.	MECH. DES. APP.
HEAT TREAT. SPEC.	CHECKED	FINAL APPROVAL	
5404 Iridite		MS-1778 A	
FINISH & SPEC. NO.			

ISSUE	ITEM	CHANGED FROM	DATE	CH. NO.	DRAFTS	CHECKER	ENG. APP.
A		1 9/32 DIM. WAS 1 5/16 3 11/16 DIM. WAS 1 1/8	4/9/66	16408	JL		

TOLERANCES: DEC. DIM.  $\pm$   
FRAC. DIM.  $\pm 1/64$   
ANGULAR DIM.  $\pm$

SCALE: 1/2 Do Not Scale

DRILL, PUNCH, COMMERCIAL STOCK SIZES AND MANUFACTURERS TOLERANCES ARE NOT INCLUDED.

REQ. PER UNIT	MODEL	PROJECT NO.	ASSY. NO.	DATE
1	PS-5	PAL-1K		6-11-59

USED ON