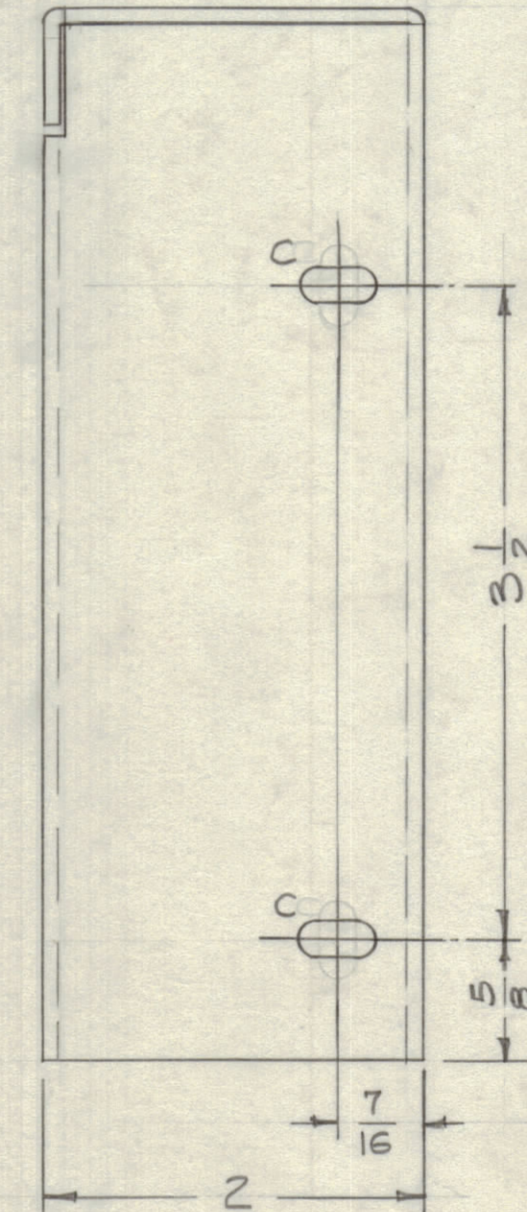
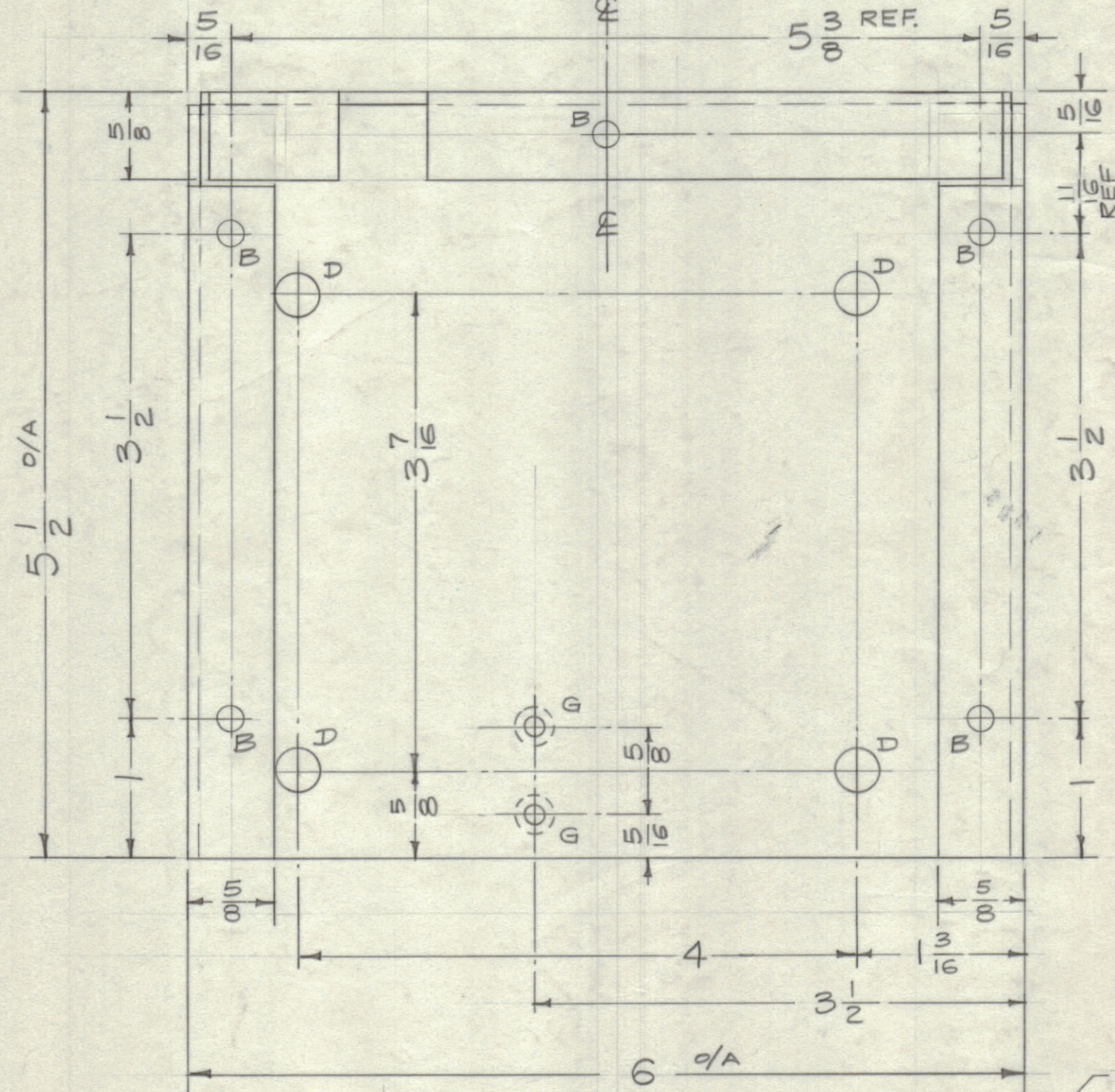
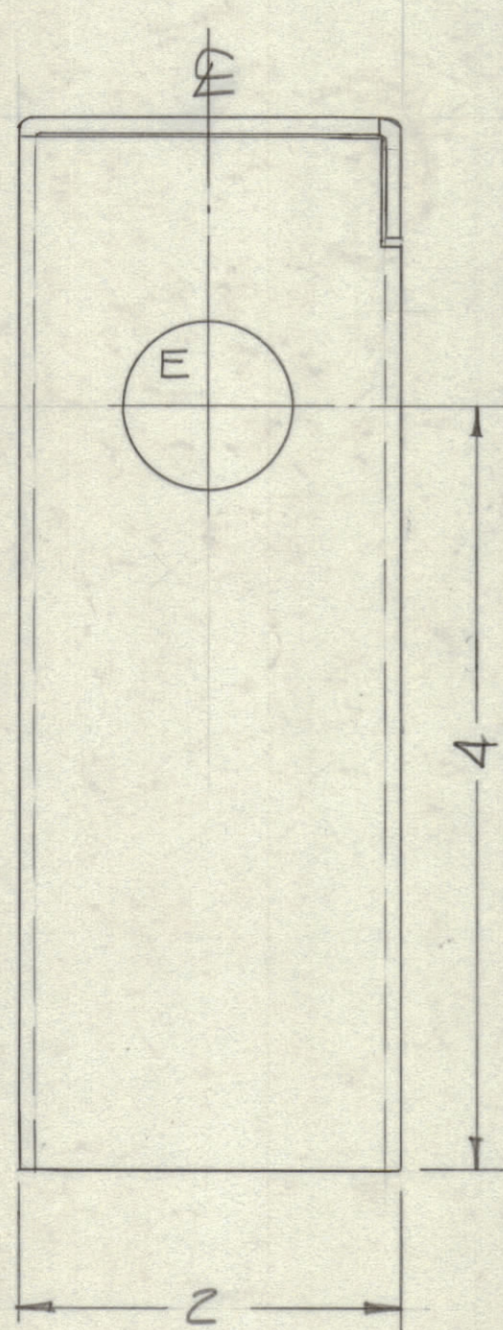
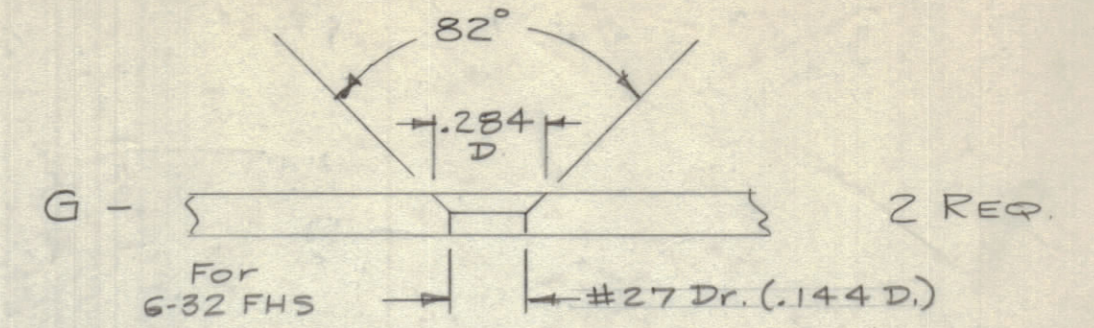
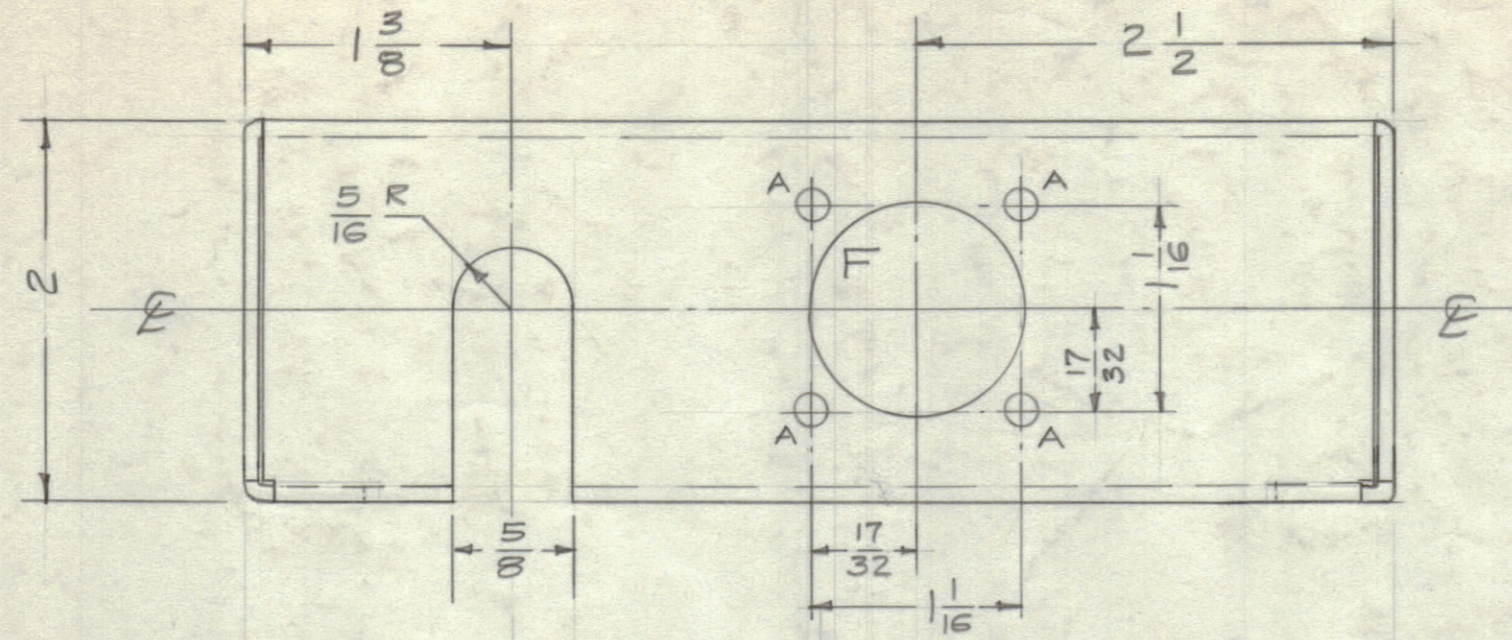


IF IT IS FOUND DESIRABLE TO CHANGE ANY TOLERANCE OR OTHER DETAIL SPECIFIED ON THIS DRAWING NOTIFY THE PURCHASER PROMPTLY.

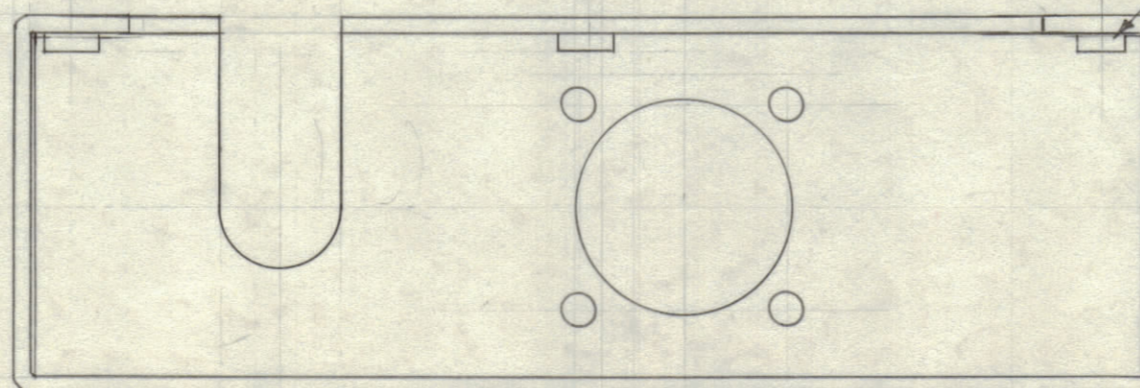
MAXIMUM ALLOWABLE TOLERANCES HAVE BEEN DETERMINED AND DEVIATIONS WILL BE CAUSE FOR REJECTION. REMOVE ALL BURRS AND SHARP EDGES.

- A -  $\frac{11}{64}$  (.171) D. 4 Req.
- B -  $\frac{.191}{.194}$  D. 5 Req. (For NT-129-632-4)
- C -  $\frac{13}{64} \times \frac{13}{32}$  SLOT 2 Req.
- D -  $\frac{5}{16}$  (.312) D. 4 Req.
- E -  $\frac{7}{8}$  (.875) D. 1 Req.
- F -  $1\frac{1}{8}$  (1.125) D. 1 Req.



MS-1779

Mount NT-129-632-4 in "B" Holes as Shown. (5 Req.)



DECIMALS		FRACTIONS	
.X ± .05	TOLERANCES	± 1/64	ANGLES ± 0° 30'
.XX ± .01			
.XXX ± .005			

CUT HERE GUARANTEED 2-56

ISSUE	ITEM	CHANGED FROM	DATE	CH. NO.	DRAFTS	CHECKER	ENG. APP.
TOLERANCES							
SCALE: FULL (Do not Scale)							
ALL OTHERS	DEC. DIM. ±		DRILL, PUNCH, COMMERCIAL STOCK SIZES AND MANUFACTURERS TOLERANCES ARE NOT INCLUDED.				
	FRAC. DIM. ± 1/64						
	ANGULAR DIM. ±						

REQ. PER UNIT	MODEL	PROJECT NO.	ASSY. NO.	DATE
1	PS-E	PAL-1K		6-12-59
USED ON				

REQ.	ITEM	PART NO.	DESCRIPTION	SYMBOL
		.081 THK	THE TECHNICAL MATERIEL CORP. MAMARONECK, NEW YORK	
STOCK SIZE				
Aluminum		CHASSIS, CABLE JUNCTION		
MATERIAL		WEIGHT PER PC.		
5052-H32		16 1/2/59		
TYPE & TEMPER		DRAWN		
		ELEC. DES. APP. MECH. DES. APP.		
HEAT TREAT. SPEC.		CHECKED		
3404 Iridite		FINAL APPROVAL		
FINISH & SPEC. NO.		MS-1779		