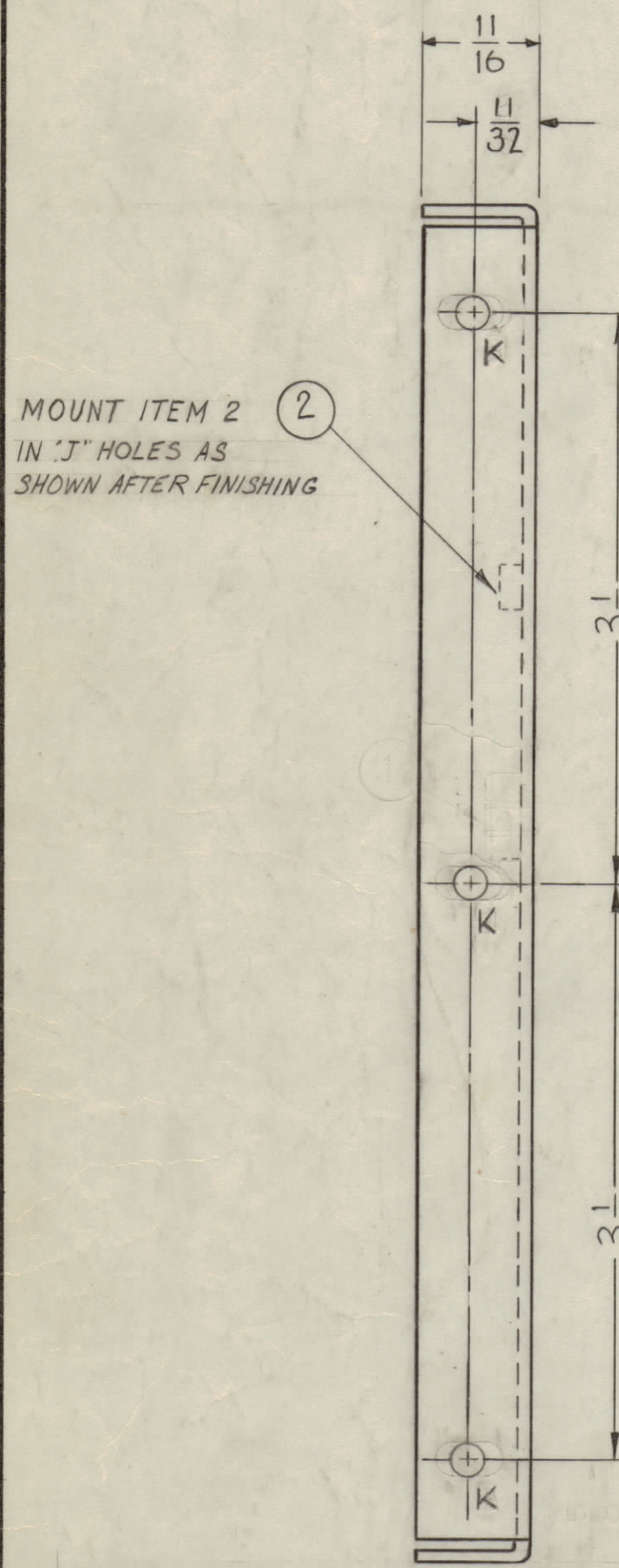


IF IT IS FOUND DESIRABLE TO CHANGE ANY TOLERANCE OR OTHER DETAIL SPECIFIED ON THIS DRAWING NOTIFY THE PURCHASER PROMPTLY.
 MAXIMUM ALLOWABLE TOLERANCES HAVE BEEN DETERMINED AND DEVIATIONS WILL BE CAUSE FOR REJECTION. REMOVE ALL BURRS AND SHARP EDGES

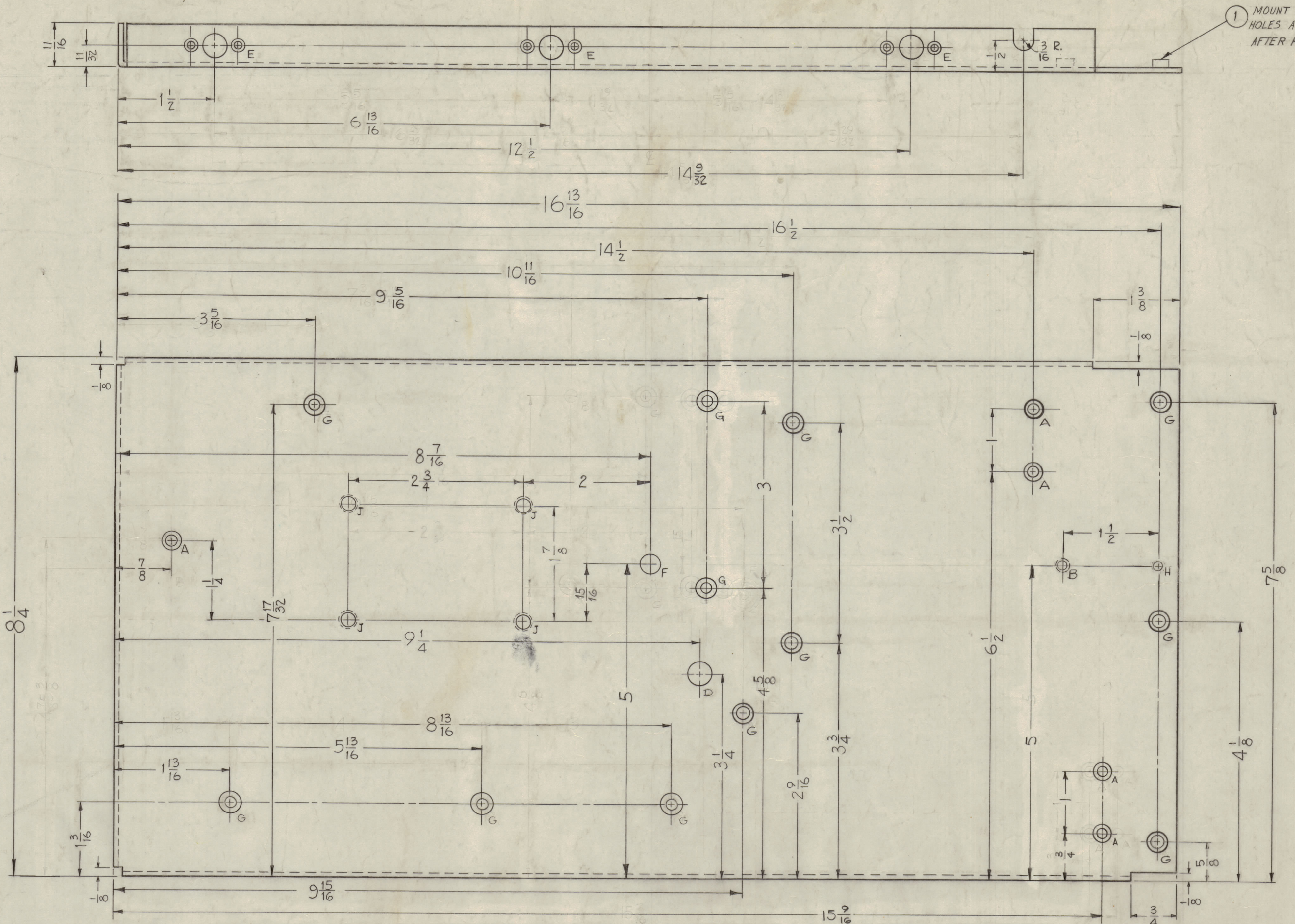
NOTICE TO PERSONS RECEIVING THIS DRAWING

THE TECHNICAL MATERIEL CORPORATION claims proprietary right in the material disclosed herein. This drawing is issued in confidence for engineering information only and may not be reproduced or used to manufacture anything shown herein without permission from THE TECHNICAL MATERIEL CORPORATION to the user. This drawing is loaned for mutual assistance and is subject to recall at any time.

Property of:
 THE TECHNICAL MATERIEL CORPORATION
 MAMARONECK, NEW YORK

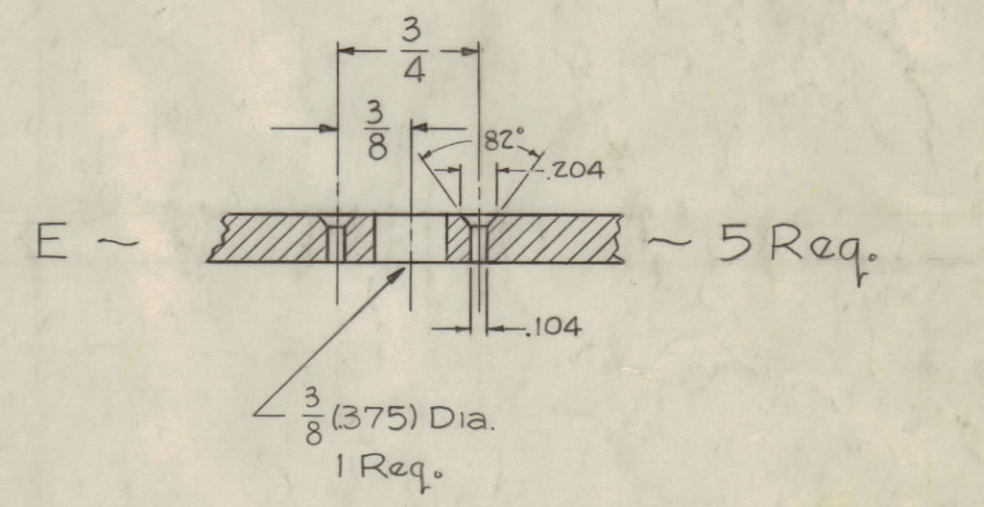


MOUNT ITEM 2 IN 'J' HOLES AS SHOWN AFTER FINISHING

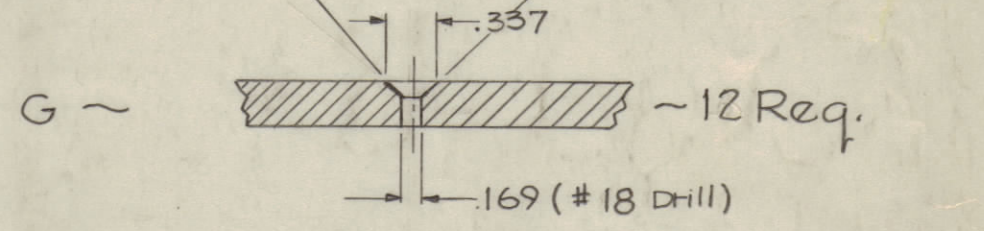


MOUNT ITEM 1 IN 'B' HOLES AS SHOWN AFTER FINISHING.

- A - See Detail FOR 2-32 5 Req.
- B - .191 - .194 DIA. 1 Req.
- C - DELETED 2 Req.
- D - 3/8 (.375) DIA. 1 Req.



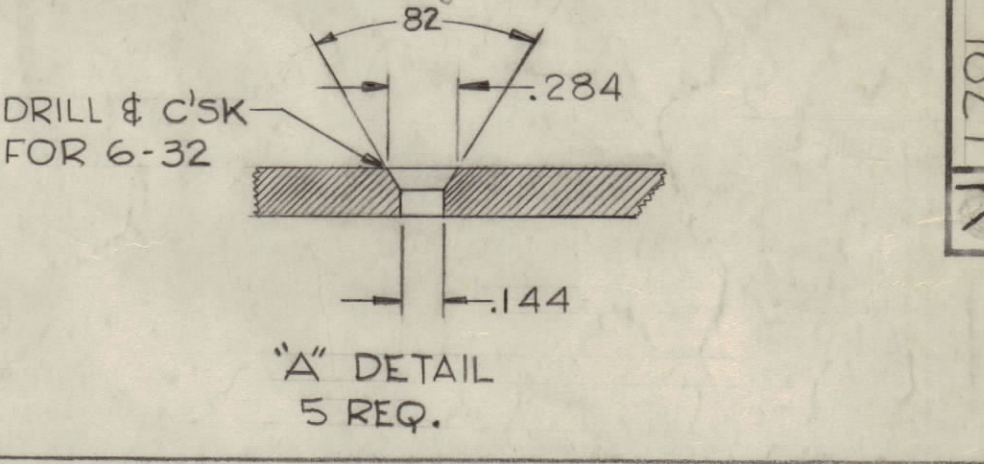
F - 5/16 DIA. 1 Req.



H - 11/64 DIA. 1 Req.

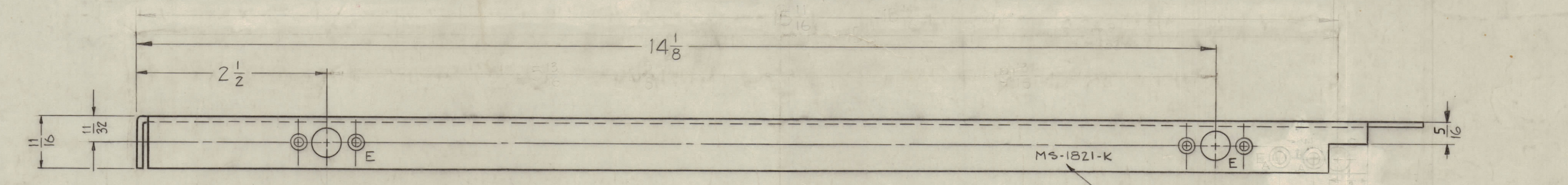
J - .221 - .224 DIA. 4 Req.

K - 13/64 DIA. 3 Req.



MS-1821-K

| | | | | | | | | |
|---|---|---|---------|------|---------------|--|--|--|
| K | 2 | (2) 'G' HOLES RELOCATED | 3-1-53 | 8307 | | | | |
| J | 1 | (2) 'M' HOLES RELOCATED | | | | | | |
| H | 1 | (1) 'H' HOLE WAS (B) HOLE | 1-4-62 | 6145 | A. H. | | | |
| G | 1 | (1) 'A' Hole Added | 12-2-61 | 6011 | E. H. | | | |
| F | 2 | Dim 3/16 R. Was 5/16 C. Hole | 11-9-61 | 5825 | RLI | | | |
| E | 1 | Dim 9/16 Was 3/16, 14 9/32 Was 14 1/4 | | | | | | |
| D | 4 | Added Notch to Bottom Lip | | | | | | |
| C | 3 | 14 1/4 Dim. WAS 14 5/16 | 7-7-61 | 5198 | MAF | | | |
| B | 2 | (1) 'C' Hole Deleted | | | | | | |
| A | 1 | (2) 'A' Holes Relocated | | | | | | |
| | 2 | Dim 1 1/2 Was 3/8 (Left Lip) | | | | | | |
| | 3 | 30 Holes were 1/4 x 1/2 | 2-8-61 | 4063 | RLI | | | |
| | 5 | Item # 1 Was NT-129-524-4, 1 Req. Deleted | | | | | | |
| | 4 | (1) 'E' (1) 'B' HOLES RELOCATED | | | | | | |
| | 3 | (4) 'E' (1) 'B' HOLES ADDED | | | | | | |
| | 2 | 'F' HOLE WAS 2 DRILL #18 | | | | | | |
| | 1 | 'B' HOLE WAS 13/64 D. | 1-16-60 | 3904 | MAF | | | |
| | 8 | 'A' Holes changed to 6-32 C'sk Holes. | | | | | | |
| | 7 | 'H' Slots Added | 1/4 | 17 | John C. Bie12 | | | |
| | 6 | 'B' 3/8 Dim was 7 3/16 | | | | | | |
| | 5 | 'B' 3/8 Dim was 4 7/8 | | | | | | |
| | 4 | 'B' 7/32 Dim was 7 5/8 | | | | | | |
| | 3 | 'B' 4 5/8 Dim was 4 11/16 | | | | | | |
| | 2 | 'B' 3 5/16 Dim was 3 3/8 | | | | | | |
| | 1 | 'B' Holes Deleted | | | | | | |
| B | 1 | 'B' was 4 1/2 | 7-23-59 | 1323 | DM | | | |
| A | 1 | 'G' Detail added | 7-7-59 | | JCB | | | |



METAL STAMP TMC PART NO. 1/8 HIGH, 60° HIC

NOTE:
 USE MATERIAL THICKNESS FOR MAX. RADIUS ON ALL BENDS UNLESS OTHERWISE SPECIFIED.

| 4 | 2 | NT-129-832-4 | NUT, ROUND, SWAGE TYPE | J |
|-----------|----------|---------------|------------------------------|---|
| 1 | 1 | NT-129-632-4 | NUT, ROUND, SWAGE TYPE | B |
| REQ. ITEM | PART NO. | DESCRIPTION | SYMBOL | |
| | | .081 | THE TECHNICAL MATERIEL CORP. | |
| | | STOCK SIZE | MAMARONECK, NEW YORK | |
| | | ALUMINUM | PLATE, SIDE RIGHT | |
| | | MATERIAL | WEIGHT PER PC. | |
| | | 5052 - H-32 | | |
| | | TYPE & TEMPER | John C. Bie12 | |
| | | | DRAWN | |
| | | | ELEC. DES. APP. | |
| | | | MECH. DES. APP. | |
| | | | CHECKED | |
| | | | FINAL APPROVAL | |
| | | | HEAT TREAT. SPEC. | |
| | | | S404 - IRIDITE | |
| | | | FINISH & SPEC. NO. | |

| 1 | RFD-1 | PALIK | 6-18-59 |
|---------------|-------|-------------|---------|
| REQ. PER UNIT | MODEL | PROJECT NO. | DATE |
| | | | |

MS-1821-K