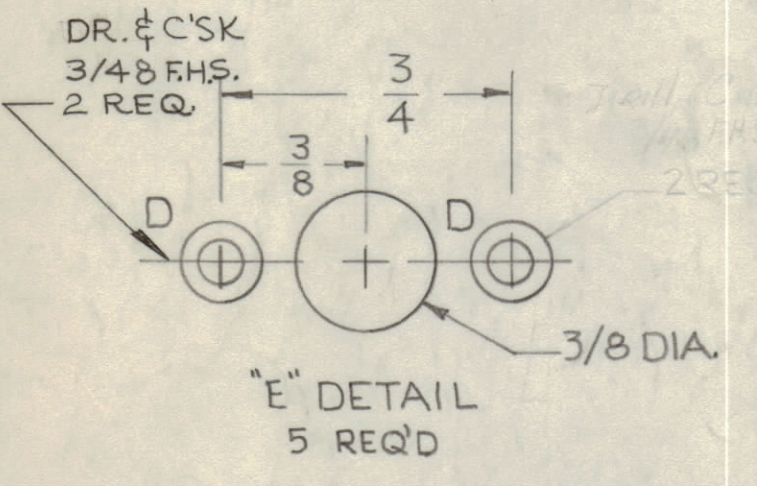
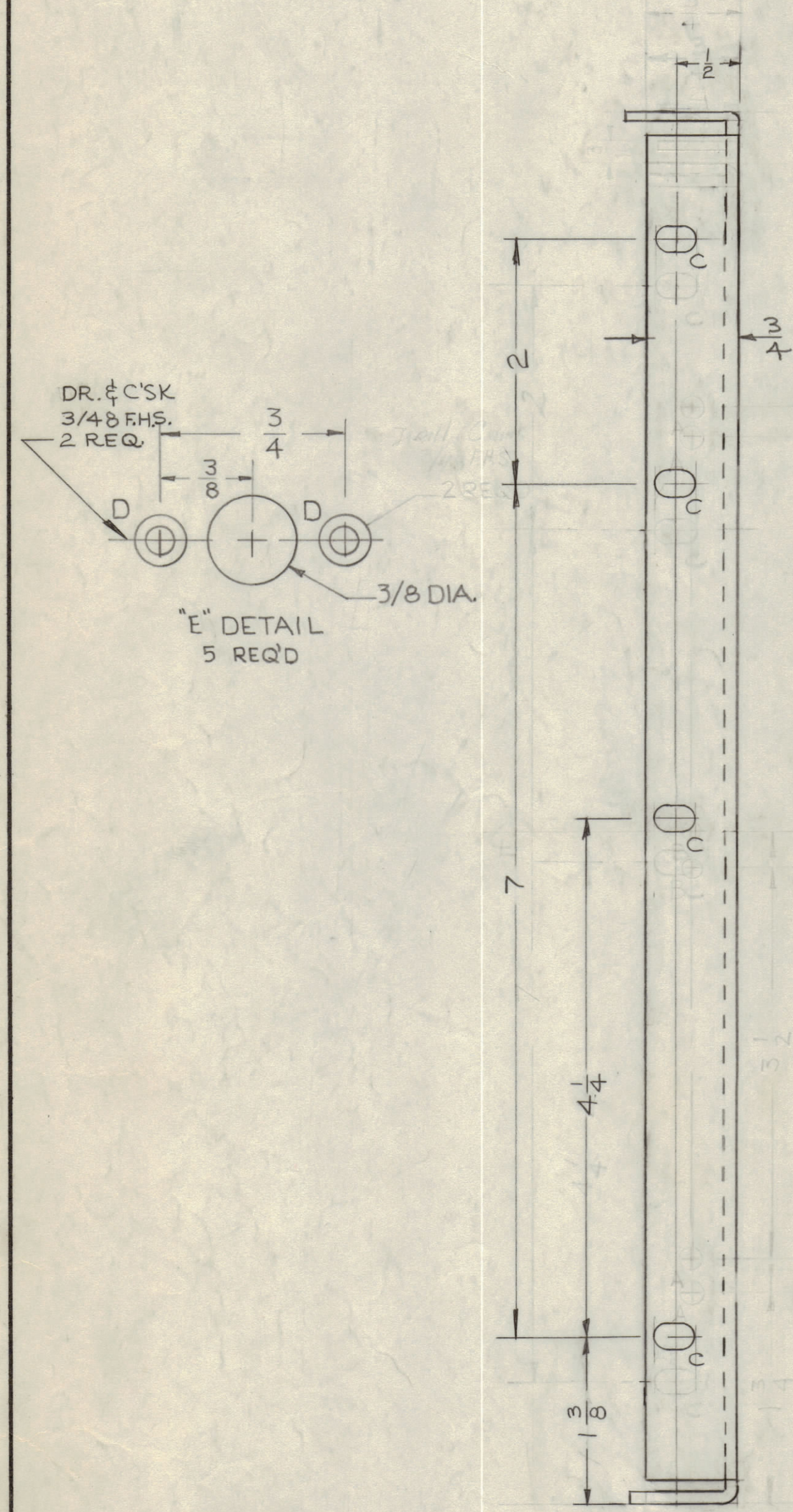
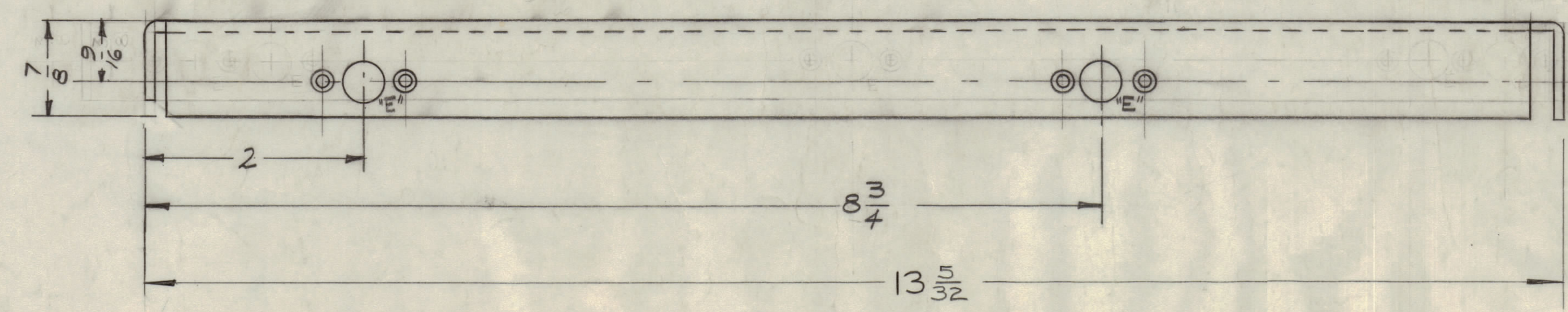
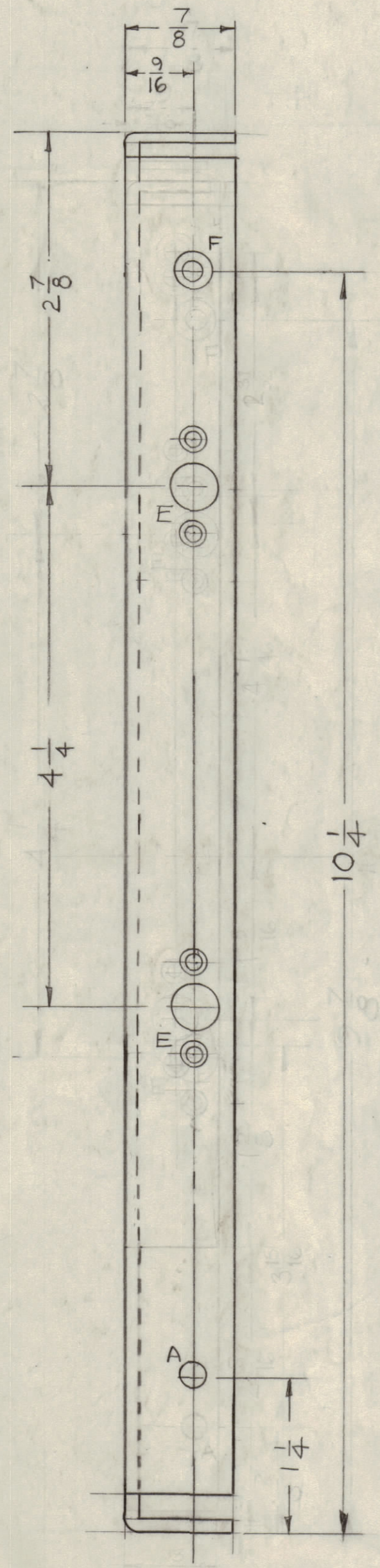
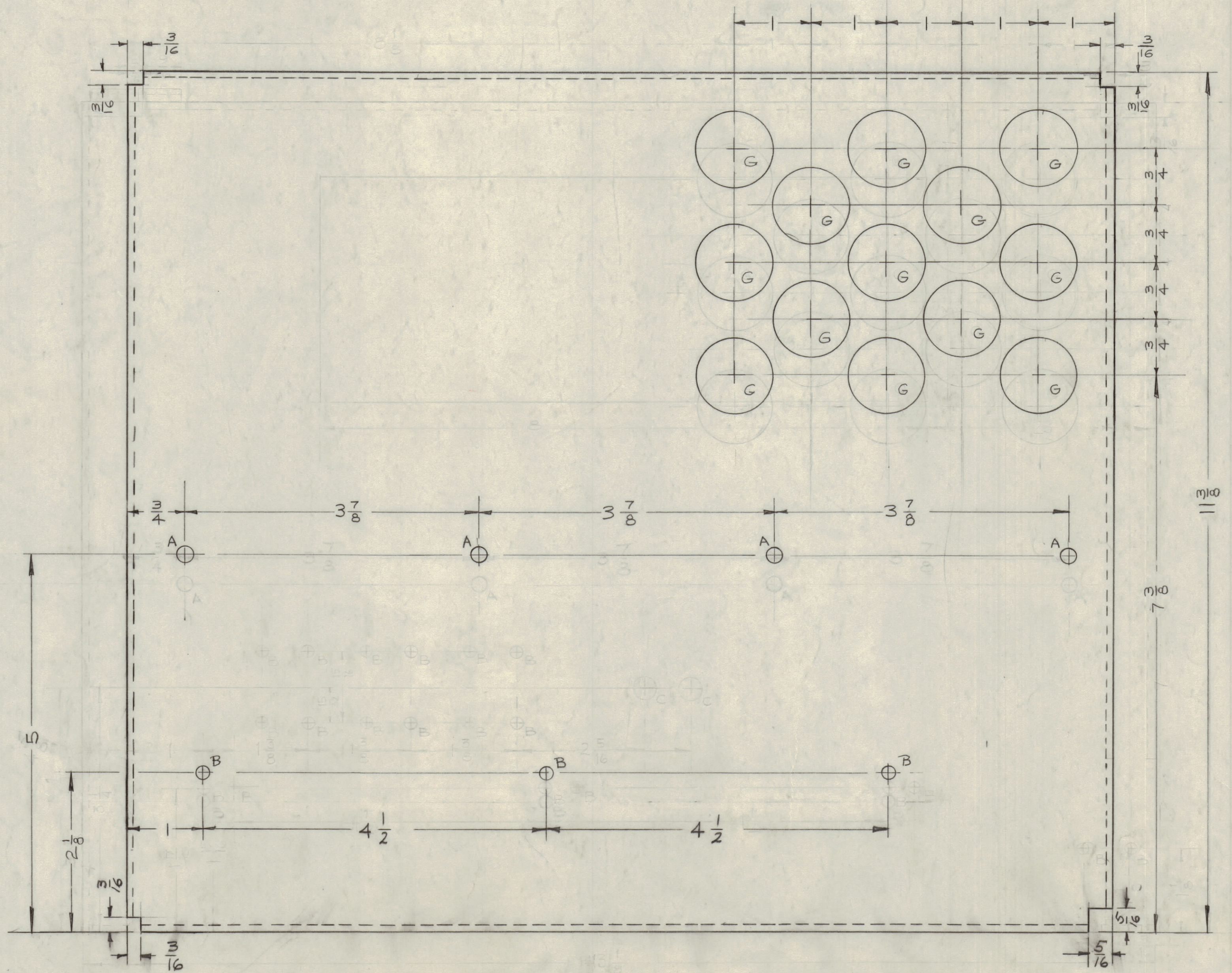
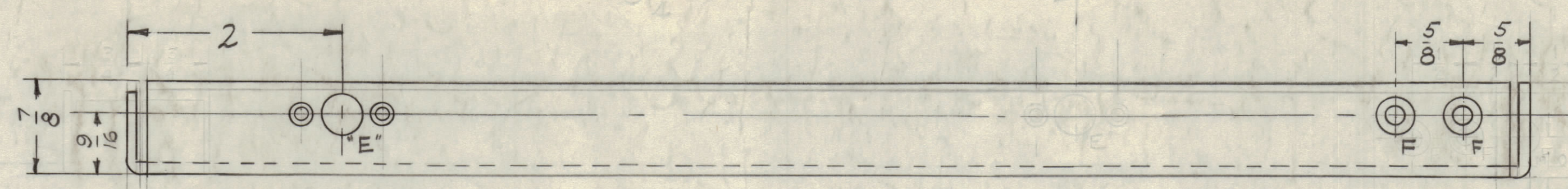


IF IT IS FOUND DESIRABLE TO CHANGE ANY TOLERANCE OR OTHER DETAIL SPECIFIED ON THIS DRAWING NOTIFY THE PURCHASER PROMPTLY.
 MAXIMUM ALLOWABLE TOLERANCES HAVE BEEN DETERMINED AND DEVIATIONS WILL BE CAUSE FOR REJECTION. REMOVE ALL BURRS AND SHARP EDGES

HOLES	REQ'D
A-13/64 (203) DIA.	5
B-11/64 (171) "	3
C-13/64 X 13/32 SLOTS	4
D-3-48 CLEARANCE & COUNTERSUNK	10
E-SEE DETAIL "E"	5
F-DR. & C'SK FOR 8-32	3
G-1" DIA. HOLES	13



NOTICE TO PERSONS RECEIVING THIS DRAWING
 THE TECHNICAL MATERIEL CORPORATION claims proprietary right in the material disclosed hereon. This drawing is loaned in confidence for engineering information only and may not be reproduced or used to manufacture anything shown hereon without permission from THE TECHNICAL MATERIEL CORPORATION to the user. This drawing is loaned for mutual assistance and is subject to recall at any time.
 Property of:
 THE TECHNICAL MATERIEL CORPORATION
 MAMARONECK, NEW YORK

ISSUE	ITEM	CHANGED FROM	DATE	CN. NO.	DRAFTS	CHECKER	ENG. APP.
2	(1) E DETAIL DELETED		8/16/60				
1	13-5/32 DIM. ADDED						
7	1 1/4 WAS 7/8		6/19/60				
10	1 1/4 WAS 3/28						
11	1 1/4 WAS 1 1/2						
2	3/8 WAS 7/8						
3	5 WAS 4 3/8						
2	1/8 WAS 1/32						
1	1 3/8 WAS 1"						
A	MAT. WAS .081 GA		7/14/60				

TOLERANCES: ALL DEC. DIM. ±; OTHERS FRACTIONAL DIM. ±; ANGULAR DIM. ±

SCALE: DRILL, PUNCH, COMMERCIAL STOCK SIZES AND MANUFACTURERS TOLERANCES ARE NOT INCLUDED.

REQ. PER UNIT	MODEL	PROJECT NO.	ASSY. NO.	DATE
1	CPP 2	E-10471		9-4-59

REQ. ITEM	PART NO.	DESCRIPTION	SYMBOL
1	1/8	ALUMINUM	
		STOCK SIZE	
		MATERIAL WEIGHT PER FC.	
		5052-H32	
		TYPE & TEMPER	
		HEAT TREAT. SPEC.	
		S-404 yellow Iridite	
		FINISH & SPEC. NO.	
		THE TECHNICAL MATERIEL CORP. MAMARONECK, NEW YORK	
		RIGHT SIDE PLATE	
		DRAWN: J. S. CHECKED: J. S.	
		ELEC. DES. APP. MECH. DES. APP.	
		FINAL APPROVAL	
		MS-1858	C

MS-1858 C