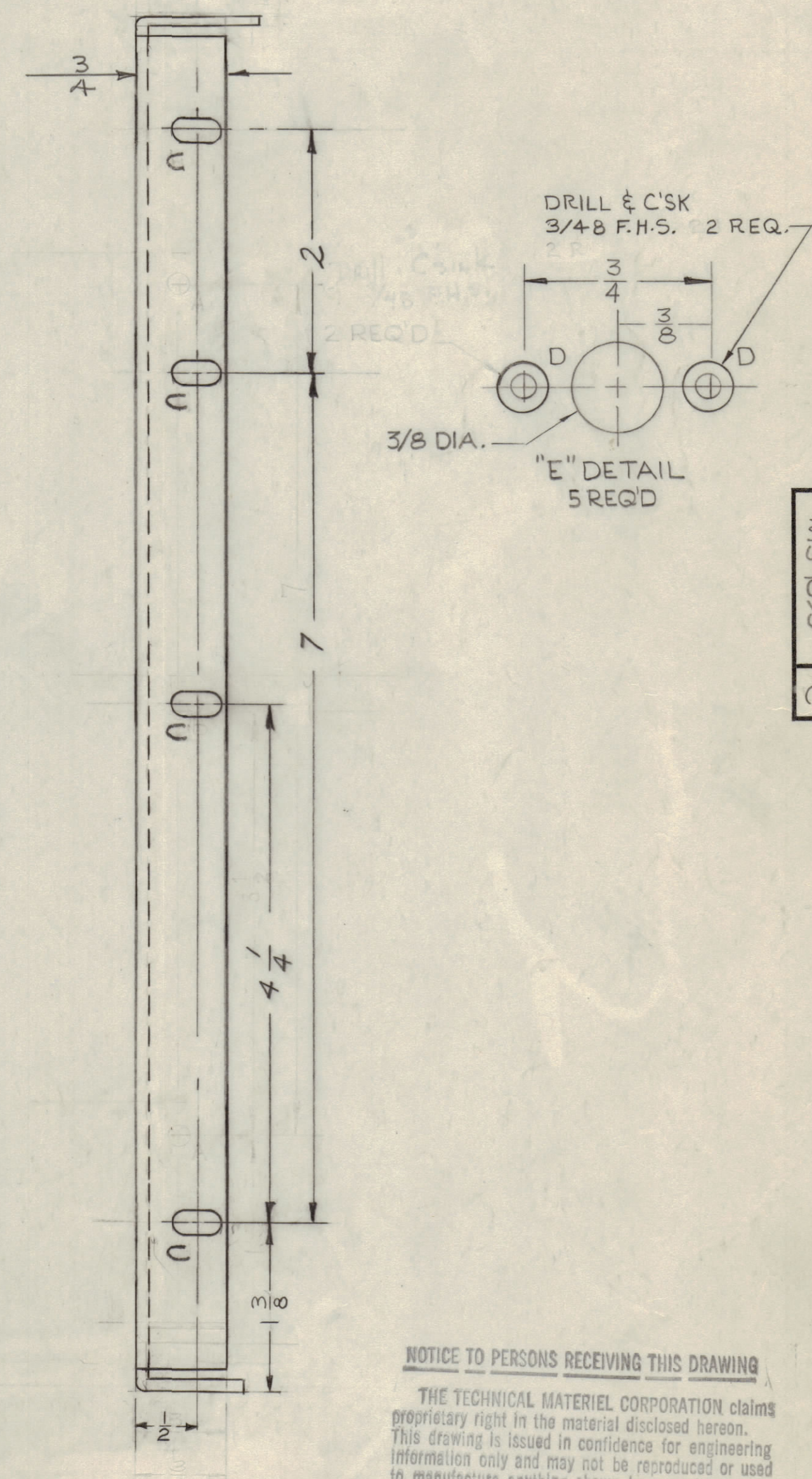
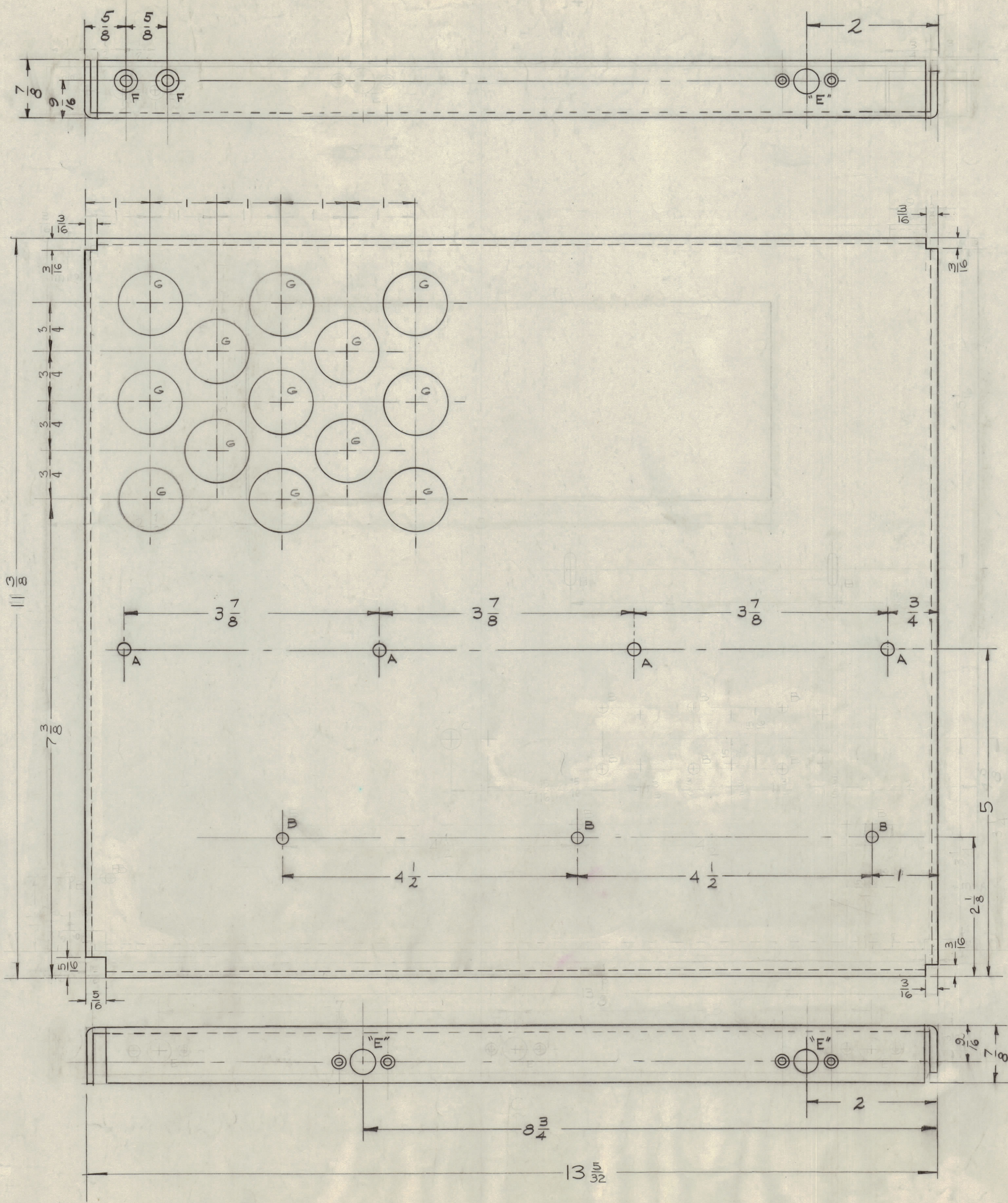
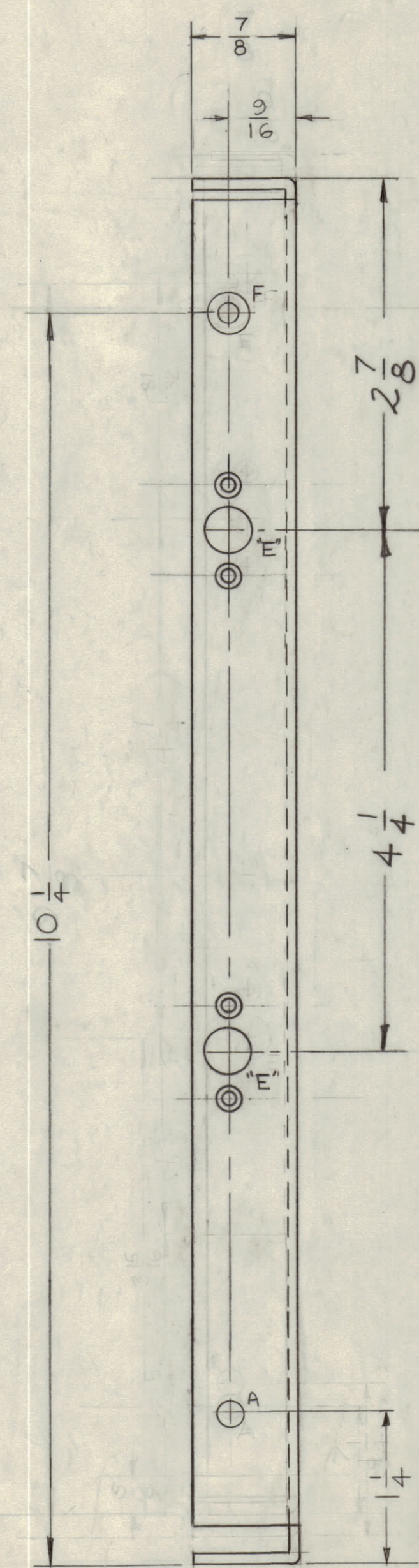


IF IT IS FOUND DESIRABLE TO CHANGE ANY TOLERANCE OR OTHER DETAIL SPECIFIED ON THIS DRAWING NOTIFY THE PURCHASER PROMPTLY.
 MAXIMUM ALLOWABLE TOLERANCES HAVE BEEN DETERMINED AND DEVIATIONS WILL BE CAUSE FOR REJECTION. REMOVE ALL BURRS AND SHARP EDGES

HOLES	REQD
A- 13/64 (.203) DIA.	5
B- 11/64 (.171) "	3
C- 13/64 x 13/32 SLOTS	4
D- 3-48 Clearance & Countersunk	10
E- SEE DETAIL "E"	5
F- DRILL & C'SK FOR 8-32	3
G- 1" DIA. HOLES	13



NOTICE TO PERSONS RECEIVING THIS DRAWING
 THE TECHNICAL MATERIEL CORPORATION claims proprietary right in the material disclosed herein. This drawing is issued in confidence for engineering information only and may not be reproduced or used to manufacture anything shown hereon without permission from THE TECHNICAL MATERIEL CORPORATION to the user. This drawing is loaned for mutual assistance and is subject to recall at any time.
 Property of:
 THE TECHNICAL MATERIEL CORPORATION
 MAMARONECK, NEW YORK

ISSUE	ITEM	CHANGED FROM	DATE	CN. NO.	DRAFTS	CHECKER	ENG. APP.
C	2	(1) E-DETAIL DELETED	8/16/60	+	CS	H. De	[Signature]
	1	13-5/32 DIM. WAS 13-1/8 DIM.					
	7	1 1/8 WAS 1"					
	6	2 1/8 WAS 1 3/4					
	5	5 WAS 4 5/8					
	4	11 3/8 WAS 11					
	3	7 3/8 WAS 7					
	2	1 1/4 WAS 7/8					
	1	10 1/4 WAS 9 3/8					
A	1	MAT. WAS .081 GA	4/16/60	+	WT	H. De	[Signature]

SCALE: DRILL, PUNCH, COMMERCIAL STOCK SIZES AND MANUFACTURERS TOLERANCES ARE NOT INCLUDED.

REQ PER UNIT	MODEL	PROJECT NO.	ASSY. NO.	DATE
1	CPP-2			9-4-59

REQ. ITEM	PART NO.	DESCRIPTION	SYMBOL
1/8		THE TECHNICAL MATERIEL CORP. MAMARONECK, NEW YORK	
		ALUMINUM	LEFT SIDE PLATE
		5052-H32	
		TYPE & TEMPER	
		HEAT TREAT. SPEC.	
		5-404 Yellow Iridite	
		FINISH & SPEC. NO.	

DRYANCO
 CHECKED [Signature] ELSE DES. APP. [Signature] MECH. DES. APP. [Signature]
 FINAL APPROVAL [Signature] MS-1859 C

MS-1859 C